

**OFFICE OF STATE AID  
ROAD CONSTRUCTION**



**Annual Report  
Fiscal Year 2006**

**OFFICE OF  
STATE AID ROAD CONSTRUCTION**

MISSISSIPPI DEPARTMENT OF TRANSPORTATION  
P. O. BOX 1850  
JACKSON, MISSISSIPPI 39215-1850

*J. Brooks Miller, Sr., P.E.*  
*State Aid Engineer*  
*Telephone (601) 359-7150*

*412 Woodrow Wilson Avenue*  
*Jackson, MS 39216*  
*Fax (601) 359-7141*

October 09, 2006

The Honorable Haley Barbour, Governor, and  
Members of the Mississippi Legislature

Gentlemen:

RE: Annual Report, Office of State Aid Road Construction  
Fiscal Year July 1, 2005, thru June 30, 2006

The State Aid Engineer respectfully submits this Annual Report of the Operations of the Office of State Aid Road Construction for Fiscal Year 2006.

Included are operation summaries of the past fiscal year, together with a brief summary of the overall background and functions of the office at the state and county levels. We hope that this information will be of interest and help to the Governor and all members of the Legislature, as well as other individuals concerned with the State Aid Road Program.

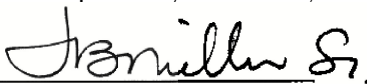
During Fiscal Year 2006, the counties awarded \$117,548,689 in construction contracts. This was comprised of \$46,025,400 for State Aid (SAP) projects, \$58,195,689 for Federal Aid projects [which included \$14,884,810 for eighteen (18) Bridge Replacement (BR) projects and \$1,335,530 for Bridge Inspection (BR-NBIS) projects], \$12,238,600 for Local System Bridge Program (LSBP) projects and \$1,089,000 for Local System Road Program (LSRP) projects.

Through its improved system of roads, the State Aid Program continues to contribute to the construction and maintenance of roads and bridges in all counties of the state. Many employment opportunities are provided during the actual construction of State Aid roads.

We encourage the Legislature to conduct a thorough study of the State Aid Program so that any legislative changes made will strengthen the program and serve the long-term interests of the citizens of Mississippi.

Your recommendations and support of the State Aid Program are respectfully requested.

Respectfully submitted,



J. Brooks Miller, Sr.  
State Aid Engineer

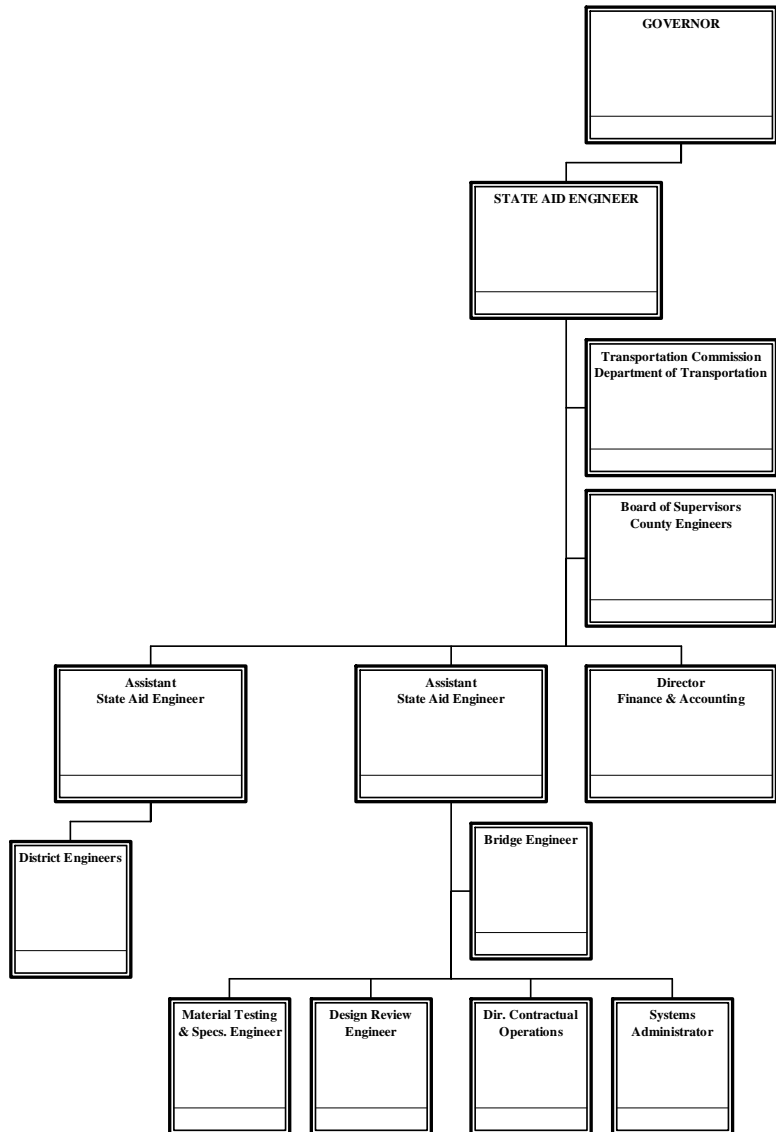
**OFFICE OF STATE AID ROAD CONSTRUCTION**  
**SUMMARY ANNUAL REPORT**  
**FOR**  
**THE FISCAL YEAR JULY 1, 2005, TO JUNE 30, 2006**  
**TOGETHER WITH**  
**A PROGRESS REPORT FROM THE BEGINNING OF THE**  
**PROGRAM (MAY, 1950) TO JUNE 30, 2006**

**TABLE OF CONTENTS**

	<u>Page</u>
Organizational Chart	1
State Aid Road Program:	
Background of Program	2
Organization of Program	3
Operation of Program	4
Type or Character of Construction and Reseal Programs	5
Progress of Program	6
Revenue Sources and Amounts	11
Receipts and Disbursements	12
Funding Summary	13
Summary of Administrative Expenses	14
Out-of-State Travel to Conventions and Meetings	16
Automobile Expenditures for State-Owned Vehicles	17
Improvements Let to Contract from July 1, 2005, thru June 30, 2006	18
Improvements Made on State Aid System from June, 1950, thru June 30, 2006	20
State Aid Program Construction and Engineering Disbursements from July 1, 2005, thru June 30, 2006	23
Local System Bridge Program Construction and Engineering Disbursements from July 1, 2005, thru June 30, 2006	26

**OFFICE OF STATE AID ROAD CONSTRUCTION  
ORGANIZATION CHART**

Fiscal Year 2005  
Annual Report



## **THE STATE AID ROAD PROGRAM**

This report primarily summarizes the operations and progress of the State Aid Program for the fiscal year July 1, 2005, to June 30, 2006.

It is considered appropriate, however, to include an overall background of the program covering the enabling legislation, organization and functions at the State Aid Office and county levels, total funds expended, and total construction improvements accomplished.

An estimate of the program volume anticipated for the fiscal year July 1, 2006, to June 30, 2007, is also included in the report.

### **BACKGROUND OF PROGRAM**

The State Aid Program had its beginning with the passage of Chapter 6, Laws of the Extraordinary Session of 1949 (Section 65-9-[1-33] of the Mississippi Code of 1972). This legislation provided for the creation of a division within the State Highway Department, to be known as the Division of State Aid Road Construction, and to be charged with the responsibility of administering the program at the state level. The 1992 Legislature passed Senate Bill 2763 which created the Mississippi Department of Transportation. Under this bill the State Highway Department became known as the Department of Transportation and the Division of State Aid Road Construction became known as the Office of State Aid Road Construction.

The Enabling Act also provided for a State Aid System, to be composed of the principal collector and distributor routes in the 82 counties, connecting with the State Highway System and other principal county roads to form a network of secondary roads for the state. This system was originally limited to 11,656.4 miles, with each county allocated a percentage of this eligible mileage. The State Legislature at its 1962 Regular Session increased the eligible system mileage to 23,312.8 miles. No change was made in the allocation percentages. In 1994 under House Bill 1302 the allocation percentages were revised and the eligible mileage was increased to 25,857.04 miles. There are 18,990.24 miles actually designated by the Boards and approved by the State Aid Engineer as of June 30, 2006.

The 1994 Regular Session of the Legislature passed House Bill 1302 which included the establishment of a Local System Bridge Replacement and Rehabilitation Program (LSBP), (Section 65-37[1-15] of the Mississippi Code of 1972). The program provides funding for replacement and rehabilitation of deficient bridges maintained by counties or municipalities excluding bridges on the State Aid System, the municipal urban system or the rural major collector system. The Office of State Aid Road Construction is charged with the responsibility of administering the LSBP program under rules and regulations promulgated by the State Aid Engineer.

The 2001 Regular Session of the Legislature passed Senate Bill No. 2318 which established the Local System Road Program (LSRP), (Section 65-18[1-17] of the Mississippi Code of 1972). The

program gives the counties the ability to use LSBP and State Aid funds (subject to certain criteria) for the construction, reconstruction and paving of county roads not on the State Aid Road System.

## **ORGANIZATION OF PROGRAM**

### **Organization of the State Aid Office**

The State Aid Enabling Act provides that the Office of State Aid Road Construction be directed by a State Aid Engineer, who is appointed by the Governor for terms of four years each (as amended by the Legislature in 1985). It further provides that the State Aid Engineer hire assistant engineers and other employees necessary to carry out the duties and responsibilities set out in the enabling legislation.

The actual organization of the office began with the appointment of the first State Aid Engineer on May 11, 1950. The office was authorized in 2006 to have an organization for a staff of forty-two (42) full-time employees, including fifteen (15) Registered Professional Engineers and two (2) part-time employees. All positions are approved by the Department of Finance and Administration and the State Personnel Board.

### **Organization at the County Level**

Each Board of Supervisors, as the governing agency of the county, is required by statute to appoint a County Engineer, who is a Registered Professional Engineer, to act for and on behalf of the Board and to administer the engineering functions at the county level, subject to the rules and regulations promulgated by the State Aid Engineer.

The Board is also required to appoint a Local System Bridge Engineer to administer the LSBP program at the county level. The duties of the LSBP Engineer parallel those of the County Engineer and the Board may elect to appoint the County Engineer as the LSBP Engineer.

## **OPERATION OF THE PROGRAM**

### **Operation of the Program at the County Level**

It is the responsibility of the Board of Supervisors to designate the roads to be included in the county's State Aid System; adopt annual construction programs; acquire rights-of-way for State Aid projects; advertise for bids; award contracts; and maintain completed projects after construction.

The County Engineers' responsibilities and duties include, but are not limited to, the following: Assist the Boards of Supervisors in the designation and modification of their State Aid Systems; prepare annual construction programs; make surveys and prepare detailed plans and designs; make field inspections with the State Aid Engineer's representatives; prepare proposals for advertisement for bids; attend lettings at the county level; provide engineering controls (staking, etc.); supervise and inspect construction; prepare estimates for payment to the contractors; and make annual maintenance inspections of completed projects.

### **Operation of the Program at the State Level**

It is the responsibility of the State Aid Engineer and his staff to prepare and adopt uniform design standards and specifications for the construction and maintenance of State Aid projects; approve all additions to the State Aid System; approve all construction programs, plans and specifications; authorize advertisement for bids; concur in the award of the contracts; approve and disburse all payments made from the project fund; approve the final acceptance of completed projects; and make annual and other periodic inspections of completed projects to see that they are properly maintained by the respective Boards of Supervisors.



## **TYPE OR CHARACTER OF CONSTRUCTION AND RESEAL PROGRAMS**

### **Construction**

During the early years of the program (the 1950's), many counties had a great need for bridges and graded roadways with a gravel surface, although many other counties began their State Aid Programs with the construction of hard-surfaced (blacktop) improvements.

It has been the objective throughout the program to construct roads that would connect with the State Highway System and other State Aid routes to form a network of secondary roads. At the present time, all programs now being approved provide for the future completion of a hard-surfaced facility.

The first hard-surfaced State Aid roads, which were completed in the beginning of the program, now need asphalt overlays. It will be noted from the summaries to follow in this report that a total of 3,059.8miles of hot mix asphalt overlay construction (some surfaces were widened) has been accomplished. This points to the fact that the principal or arterial State Aid roads must now be upgraded to meet increasing traffic volumes and heavier loads. It is anticipated that the need for these betterments on the principal routes will continue to increase.

### **Maintenance and Reseal Work**

The original State Aid Act did not permit the use of State Aid funds for the reseal of existing bituminous surfaces, which work consists of a light application of liquid asphalt and a light application of a fine or seal aggregate to cover the asphalt. Reseal work is regarded as maintenance. The Legislature, during its 1962 Session, amended the law to permit the use of State Aid funds (not to exceed 10%) to reseal hard-surfaced roads which had been constructed through the use of State Aid Funds. This 10% limitation was eliminated during the 1982 Legislative Session.

Bituminous surface treatments need to be resealed on an average of every five or six years to protect the surfaces and the investments made therein. A total of 28,625.0 miles have been resealed, with 1,095.2 miles of this total being contracted during the 2006 fiscal year.

The Legislature, during the 1982 Regular Session, amended Section 65-9-25 of the Mississippi Code of 1972 to permit additional State Aid funds to be used for maintenance, repair and reconstruction of State Aid roads which have been constructed in accordance with State Aid standards and specifications.

**PROGRESS OF PROGRAM**

**Projects Placed Under Contract from July 1, 2005, thru June 30, 2006**

	#	Miles	Cost
Total LSBP Projects (51 Bridges Replaced)	43	5.703	12,238,600
Total LSRP (LSBP Funds)	1	0.080	384,000
Total LSRP (SA Funds)	3	0.575	705,000
State Aid & Federal Aid Projects (including Bridge Inspection & Bridge Posting)			
Construction			
Grading, Drainage Structures & Paving		49.454	
Grading, Drainage Structures & Gravel Surface		3.704	
Bridges (52)		1.245	
Asphalt Overlay Construction		23.994	
Total Construction Improvements	86	<u>78.397</u>	76,742,289
Reseal & Maintenance Projects (Previously Paved State Aid Routes)	41	<u>1,095.212</u>	27,478,800
Total Construction, Reseal & Maintenance Projects	<u>127</u>		<u>104,221,089</u>
NOTE: The above totals, by Counties, are included elsewhere in this report.			
Amounts and Types of Funds Contracted:			
State Aid			49,912,877
County			1,427,221
Federal Funds:			
MDOT Funds			0
Surface Transportation			26,375,120
Appalachian Access			346,679
Bridge Replacement			13,476,100
Bridge Inspection			1,335,530
Bridge Posting			0
Congestion Relief			0
Defense Access			0
Emergency Relief			11,347,562
Federal Land Highways			0
High Priority			0
National Corridor Planning & Development (NCPD)			0
Transportation-Community-System Preservation (TCSP)			0
Total Funds Contracted			<u>104,221,089</u>
<b>Grand Total all Projects</b>	<u>174</u>		<u>117,548,689</u>

**Projects Completed and/or Placed Under Contract from Beginning of Program in June, 1950, thru June 30, 2006**

	#	Miles	Cost
Total LSBP Projects (1,322 Bridges Replaced)	699	138.645	201,806,029
Total LSRP (LSBP Funds)	2	0.080	1,215,700
Total LSRP (SA Funds)	6	2.664	799,795
State Aid & Federal Aid Projects ( <u>including</u> Bridge Inspection and Bridge Posting)			
Construction			
Grading, Drainage Structures & Paving		10,936.131	
Grading, Drainage Structures & Gravel Surface		833.164	
Bridges (4,542)		107.632	
Asphalt Overlay Construction		3,059.863	
Total Construction Improvements	8,108	14,936.790	1,884,448,991
Reseal & Maintenance Projects (Previously Paved State Aid Routes)	1,377	28,625.058	455,512,770
Total Construction, Reseal & Maintenance Projects	9,485		2,339,961,761
<b>Grand Totals all Projects</b>	<b>10,192</b>		<b>2,543,783,286</b>

NOTE: The above totals, by Counties, are included elsewhere in this report.

**OFFICE OF STATE AID ROAD CONSTRUCTION****FY 2006 ANNUAL REPORT****Projects in Contract Stage as of June 30, 2006**

	#	Miles	Cost
Total LSBP Projects	60	10.345	19,088,300
Total LSRP (LSBP Funds)	2	2.622	1,215,700
Total LSRP (SA Funds)	4	5.068	826,900
State Aid Projects (State Aid Funds):			
Construction	77	70.812	44,449,920
Maintenance	34	640.420	22,116,588
Reseal	35	1,422.080	41,187,700
Federal Aid Projects (State Aid , Federal & LSBP Funds):			
Surface Transportation	30	339.332	37,436,633
Appalachian Access	6	4.201	6,664,404
Bridge Replacement	50	17.496	44,424,769
Bridge Inspection	4	0.000	1,718,872
Bridge Posting	0	0.000	0
Congestion Relief	0	0.000	0
Defence Access	2	9.305	3,074,681
Emergency Relief	3	1.091	1,593,856
High Priority	6	35.787	12,962,214
Public Land Highways	1	8.000	100,000
Railroad Signal	1	0.000	51,071
Total State Aid & Federal Aid Projects	249	2,548.524	215,780,708
<b>Grand Totals all Projects</b>	<b>315</b>	<b>2,566.559</b>	<b>236,911,608</b>

**Estimated Program Volume for July 1, 2006, thru June 30, 2007**

It is difficult to estimate the miles of construction and reseal improvements that will be let to contract during the coming fiscal year. However, the State Aid Road Construction Program has the potential for a \$100 to \$165 million total program for the fiscal year 2007. In addition, we expect to place under contract \$20 million in LSBP Funds.

As of June 30, 2006, programs (proposed improvements) have been adopted by the Boards of Supervisors and approved by the State Aid Engineer for the following work:

<b>Type of Projects</b>	<b>Number of Projects</b>	<b>Estimated Cost</b>
Total LSBP (System 81)	134	28,739,988
Total LSRP (LSBP Funds)(System 80)	0	0
Total LSRP (SA Funds)(System 80)	7	3,497,840
State Aid: (State Aid Funds Only)		
Construction (System 81)	88	33,918,133
Maintenance (System 81)	37	11,082,705
Reseal (System 81)	16	8,577,150
State Aid & Federal Aid Funds		
STP (System 82)	57	37,264,793
STPG (System 32)	2	328,800
AGMC (System 64)	0	0
APL (System 36)	6	3,672,465
BR (System 85)	66	37,358,199
BR-NBIS (System 85)	0	0
BR-NBIX (System 85)	0	0
ER (System 66)	23	3,219,348
MS, FBD (System 19)	15	22,534,824
PLH (System 62)	3	2,856,657
<b>Total State Aid</b>	313	\$ 160,813,074
<b>GRAND TOTAL</b>	454	\$ 193,050,902

The Boards of Supervisors began the new four-year term on January 1, 2004, and have available for planning and expenditure purposes 90% of the State Aid revenue that will accrue during the 2004-2007 period.

Bridge Replacement and Rehabilitation is a major Federal program that has helped the counties to improve the seriously deficient condition of many State Aid and Federal Aid System bridges. Historically, the Mississippi Department of Transportation has transferred 30% of the Bridge Replacement funds that are apportioned to the State Aid program for replacement of deficient bridges on county roads. However, in FY06 only 27% or \$12,400,000 was transferred. Accurate projections of future amounts to be transferred by Mississippi Department of Transportation are unavailable at this time.

The cost per mile for the construction of projects, embracing grading, drainage structures, small bridges, base and bituminous surfacing, ranges from \$387,559 per mile to \$482,722 per mile, depending on the soil conditions, availability of construction materials and terrain. The average cost of construction projects in fiscal year 2006 was \$430,525 per mile.

Projects involving large bridges with long spans and/or projects requiring higher design standards because of heavy traffic demands or other special conditions should not be considered in these cost ranges.

Liquid seal (resealing) projects range from \$24,528 to \$86,260 per mile, depending on the location and on the leveling and base course corrections needed. The average cost of reseal projects in fiscal year 2006 was \$36,403 per mile.

**REVENUE SOURCES AND AMOUNTS**

Revenues for the State Aid Program are derived from the following state and federal sources:

**State Sources:**

- (a) Section 27-65-75, Mississippi Code of 1972 (as amended by the 1994 and 1999 Regular Sessions of the Legislature), provides for a minimum diversion of \$48,000,000 or 23.25%, whichever is greater, from gasoline, diesel fuel or kerosene tax revenue and \$3,000,000 from sales tax collections into the Office of State Aid Road Construction special fund in each fiscal year. Senate Bill 2100 gave the Bond Commission authority to issue \$20,000,000 in bonds for FY 2005 and \$20,000,000 in bonds for FY 2006 for the Local System Bridge Program (LSBP). In FY 2005 we received \$3,000,000 in advance against the FY 2005 future bond issue. In FY 2006 we received \$17 million for the remainder of the FY 2005 bond issue. We recently received \$4 million in advance against the FY 2006 future bond issue. Senate Bill 3086 gave the Bond Commission authority to issue \$20 million in bonds for FY 2007. The State Treasurer and State Bond Commission have committed to issuing commercial paper to generate short term funds when needed to obligate to projects when bond proceeds are not yet available. The LSBP fund earned interest on investments in the amount of \$129,663.44 for FY 2006.
- (b) Section 65-9-17 authorizes the counties to use County funds to supplement State Aid funds for the construction of State Aid roads.

**Federal Sources (Regular):**

MDOT provides a portion of the Surface Transportation Program funds and Bridge Replacement funds made available to the State of Mississippi by the Federal Government to the counties through the State Aid Office.

**Federal Sources (Special):**

- (a) Emergency Relief funds are made available by the Federal Government to the counties through the State Aid Office on an individual project basis, to reconstruct roads and bridges on Federal Aid highways damaged or destroyed by floods, hurricanes, catastrophic failure and other disasters.
- (b) Appalachian Access Highway funds are made available to the counties in the twenty county Appalachian area in northeast Mississippi on an individual project basis. These projects are administered by the State Aid Office on an individual project basis through the Federal Highway Administration.
- (c) Other funds earmarked by Congress for selected counties.

## RECEIPTS AND DISBURSEMENTS

	State Aid Road Fund	Administrative Fund	Local System Bridge Fund
<b>BEGINNING FUNDS BALANCE 07/01/05</b>			
Unobligated Funds	1,273,991.16	22,855.89	5,230,940.54
Project Funds	36,168,451.37	0.07	6,786,596.10
Federal Aid Matching Funds	(1,153,765.84)		
Total Beginning Funds Balance	36,288,676.69	22,855.96	12,017,536.64
<b>RECEIPTS</b>			
Gasoline Tax (Section 27-65-75)	54,671,024.13		
Sales Tax (Section 27-65-75)	3,000,000.00		
County Contributions	2,048,612.50		335,508.00
FHWA Reimbursements	35,416,632.00		
Federal Aid Matching Requirements	325,870.73		
Loan from MDB	1,781,905.00		
Interest on Investments			129,663.44
Transfers in	0.00	3,152,881.92	18,027,738.07
Refunds & Miscellaneous Revenue	0.00	6,787.75	
Total Receipts	97,244,044.36	3,159,669.67	18,492,909.51
<b>TOTAL FUNDS AVAILABLE FOR EXPENDITURE</b>	<b>133,532,721.05</b>	<b>3,182,525.63</b>	<b>30,510,446.15</b>
<b>DISBURSEMENTS</b>			
Construction Expenditures:			
State Aid Construction	56,904,868.54		10,572,797.29
Federal Aid Construction	41,585,680.67		
Debt Service Construction	4,602,364.13		
Retainage	57,245.66		(102,754.98)
MDOT Testing	194,329.58		79,388.95
Total Construction Expenditures	103,344,488.58	0.00	10,549,431.26
Other Expenditures:			
Transfers to State Highway Fund 3941	325,870.73		
Transfer to Administrative Fund	2,981,599.05		
Transfer to Other Funds	1,039,150.00		
Loan Debt Service	2,032,513.78		
Administrative Expenditures		2,930,134.08	
Refund to Counties & Misc. Transfers	854,450.00		320,351.90
Total Other Expenditures	7,233,583.56	2,930,134.08	320,351.90
Total Disbursements	110,578,072.14	2,930,134.08	10,869,783.16
<b>ENDING FUND BALANCE 06/30/06</b>			
Unobligated Funds	5,263,211.87	252,391.55	11,257,813.65
Project Funds	22,741,199.38		8,382,849.34
Federal Aid Matching Funds	(5,049,762.34)		
Total Ending Funds Balance	22,954,648.91	252,391.55	19,640,662.99
<b>TOTAL FUNDS ACCOUNTED FOR</b>	<b>133,532,721.05</b>	<b>3,182,525.63</b>	<b>30,510,446.15</b>



**OFFICE OF STATE AID ROAD CONSTRUCTION****FY 2006 ANNUAL REPORT****FUNDING SUMMARY****FUNDS MADE AVAILABLE DURING FY 2006**

Sources:

Gasoline Tax (Section 27-65-75)	54,671,024	
Sales Tax	3,000,000	
County Contributions	2,384,121	
Local System Bridge Funds	18,027,738	
Interest on Investments	129,663	
Refunds and Miscellaneous Revenue	6,788	
Administrative Transfer from Counties	3,152,882	
Transfer to Budget Contingency Fund	(1,039,150)	
Federal Funds--		
FHWA Reimbursements	35,416,632	
Federal Aid Matching Requirements	325,871	
MDB Loan	1,781,905	
Total Federal Funds	37,524,408	
Total Fiscal Year Revenue		117,857,474
Less: Requirements for Administrative Expenses		(2,930,134)
<b>Total Funds Made Available for Construction During FY 2006</b>		<b>114,927,340</b>

**PROJECTION OF REVENUE FOR FY 2007 AND FY 2008**

Sources:

	FY 2007	FY 2008
Gasoline Tax (Section 27-65-75)	57,000,000	57,000,000
Sales Tax	3,000,000	3,000,000
General Funds or Bond Sales	0	20,000,000
Local System Bridge Funds	20,000,000	20,000,000
Interest on Investments	135,000	135,000
Refunds and Miscellaneous Revenue	700,000	700,000
County Contributions	2,400,000	2,400,000
Federal Aid Funds--		
Surface Transportation Program	7,700,000	7,700,000
Appalachian Access Highways	2,600,000	2,600,000
Bridge Replacement	16,000,000	16,000,000
Debt Service Loans	10,750,000	10,750,000
Priority Projects	52,950,000	52,950,000
Total Fiscal Year Revenue	173,235,000	193,235,000
Less: Requirements for Administrative Expenses	(3,117,226)	(3,241,552)
<b>Total Revenue Available for Construction</b>	<b>170,117,774</b>	<b>189,993,448</b>

**SUMMARY OF ADMINISTRATIVE EXPENSES****Salaries, Wages and Fringe Benefits:**

Employer's Contributions:		
Salaries and Wages	1,839,879.00	
Personal Leave Pay	10,506.00	
SPAHRs Refund of Deductions	20.00	
Retirement Matching	198,920.00	
Social Security Matching	135,327.00	
Workers' Compensation	5,538.00	
Group Health Insurance	154,792.00	
Group Life Insurance	4,158.00	
Unemployment Insurance Tax	2,832.00	
Cafeteria Plan	2,280.00	\$ 2,354,252.00

**Travel:**

In-State	26,946.00	
Out-of-Country	6,373.00	
Out-of-State	11,949.00	45,268.00

**Contractual Services:**

Tuition	7,363.00	
Employee Training	4,741.00	
Travel Related Registration	1,220.00	
Postage	11,470.00	
Freight	1,247.00	
Rental of Office Equipment	17,721.00	
Repair/Service Passenger Vehicle	3,825.00	
Repair/Service Office Equipment	2,528.00	
Fees and Professional Services--		
SAAS	5,035.00	
MMRS	8,081.00	
Audit Department	30,137.00	
State Personnel Board	6,160.00	
Personal Service Contracts	79,809.00	
Contract Payroll Taxes Matching	4,574.00	
Other	93,474.00	
Tort Claims Board Assessment	23,399.00	
Insurance and Fidelity Bonds	1,366.00	
Insurance Computer Equipment	166.00	
Membership Dues	155.00	
Subscription	43.00	
ITS Fees	13,377.00	
ITS Training/Education	426.00	
Service Fees to State Computer Center	12,764.00	
Software Acquisition	966.00	

**SUMMARY OF ADMINISTRATIVE EXPENSES**

Telephone--		
Monthly Fee	14,949.00	
Long Distance	1,338.00	
Usage Time Cellular Telephones	3,281.00	
Maintenance/Repair of IS Equipment	550.00	
Maintenance/Repair Comm System	198.00	
IS Software Mainenance-Outside Vendor	494.00	
IS Professional Fees-Outside Vendor	42,159.00	
Prior Year Expense	2,188.00	395,204.00
Commodities:		
Printing and Binding	2,156.00	
Duplication Supplies	5,807.00	
Office Supplies and Materials	12,027.00	
Paper Supplies	2,362.00	
Maps and Manuals	516.00	
Office Equipment	4,025.00	
Fuels Gasoline	26,403.00	
Fuel Card - Oils, Greases, Etc.	1,937.00	
Tires and Tubes - Auto	903.00	
Expendable Repair Vehicle	210.00	
Expendable Repair Parts Office Equip	150.00	
Food for Business Meeting	62.00	
Informaiton System Equipment Repair Parts	8,437.00	
Other Supplies and Materials	1,155.00	
Other Equipment	175.00	66,325.00
Capital Outlay:		
Automobiles	19,501.00	
Office Machines, Furniture & Fixtures	2,979.00	
Mainframe Systems Equipment	46,605.00	
Other Equipment		69,085.00
<b>Total</b>		<b>\$ 2,930,134.00</b>

**OUT-OF-STATE TRAVEL TO CONVENTIONS AND MEETINGS**

Employee's Name	Destination	Purpose	Total Cost	Date
Kimberly Brown	Orlando, FL	Civil Rights Conf	903.00	
Trent Curtis	Tampa, FL	Principles of Real Estate	772.00	
Fred Hollis	Pittsburg, PA	Bridge Design & Maintenance	955.00	
Dan Jordan	Orlando, FL	Civil Rights Conf	1,537.00	
Dan Jordan	Nashville, TN	AGA-Professional Trust & Acct	538.00	
Dan Jordan	Savannah, GA	Southern Transportation Conf	1,772.00	
Brooks Miller	Little Rock, AR	DRA Meeting	533.00	
Brooks Miller	Chicago, IL	NACO Annual Conf	963.00	
Brooks Miller	Savannah, GA	Southern Transportation Conf	1,026.00	
Sandra Mohr	Orlando, FL	Civil Rights Conf	897.00	
Bill Norton	Sante Fe, NM	AASHTO	2,053.00	
<b>Grand Total</b>			<b>\$11,949.00</b>	

**AUTOMOBILE EXPENDITURES FOR STATE-OWNED VEHICLES**

Make/Model	Unit #	Year	Cost	Cost of Use Estimate	Operating Expense	Total Expense	Miles Traveled	Cost Per Mile
Ford/Crown Victoria	V123	2001	19,166	176.33	226.26	402.59	2,201	.1829
Ford/Crown Victoria	V124	2001	19,166	1,542.29	1,978.97	3,521.25	19,251	.1829
Ford/Taurus	V125	2004	11,893	3,339.50	4,285.04	7,624.54	41,684	.1829
Ford/Taurus	V126	2004	11,893	3,175.59	4,074.71	7,250.30	39,638	.1829
Ford/Taurus	V127	2004	11,863	3,000.70	3,850.30	6,851.00	37,455	.1829
Ford/Crown Victoria	V128	2004	19,786	1,545.57	1,983.18	3,528.75	19,292	.1829
Ford/Taurus	V129	2005	12,396	2,507.83	3,217.89	5,725.72	31,303	.1829
Ford/Taurus	V130	2005	12,396	3,701.46	4,749.48	8,450.94	46,202	.1829
Ford/Taurus	V131	2005	12,396	2,002.79	2,569.85	4,572.64	24,999	.1829
Ford/Taurus	V132	2005	12,396	2,368.03	3,038.51	5,406.54	29,558	.1829
Ford/Crown Victoria	V133	2005	19,288	1,788.80	2,295.28	4,084.08	22,328	.1829
Ford/Crown Victoria	V134	2006	19,792		1,008.55	1,008.55	9,811	.1028

## IMPROVEMENTS LETS TO CONTRACT FROM JULY 1, 2005, THRU JUNE 30, 2006

County	Construction Miles and Cost							Reseal & Maintenance	
	Surfacing	Grading & Gravel	Bridges		Resur-facing	Total Miles	Cost	Miles	Cost
			#	Miles					
Adams	0.439	-	3	0.019	0.056	0.514	1,234,300	0.113	182,600
Alcorn	-	-	-	-	-	-	-	4.878	427,100
Amite	-	-	-	-	-	-	-	-	0
Attala	0.234	-	4	0.024	-	0.258	1,206,600	17.678	709,100
Benton	0.984	-	-	-	-	0.984	418,500	24.926	728,400
Bolivar	0.420	-	-	-	-	0.420	809,100	-	0
Calhoun	0.195	-	2	0.010	-	0.205	593,700	-	0
Carroll	-	-	-	-	-	-	-	-	0
Chickasaw	1.619	-	-	-	-	1.619	610,800	-	0
Choctaw	0.623	0.206	5	0.152	-	0.981	2,346,100	-	0
Claiborne	-	-	-	-	-	-	59,987	53.826	461,800
Clarke	0.359	-	2	0.073	-	0.432	1,219,980	141.955	602,100
Clay	-	-	-	-	0.660	0.660	320,800	-	0
Coahoma	0.380	-	1	0.030	-	0.410	1,172,200	2.204	688,700
Copiah	0.113	-	1	0.017	-	0.130	302,100	-	0
Covington	0.277	-	1	0.017	-	0.294	497,400	-	0
DeSoto	-	-	-	-	3.409	3.409	657,400	7.171	931,200
Forrest	-	-	-	-	-	-	-	16.012	449,500
Franklin	-	-	-	-	-	-	-	-	0
George	-	-	-	-	-	-	-	-	0
Greene	-	-	-	-	-	-	-	30.029	604,500
Grenada	-	-	-	-	-	-	-	34.924	1,059,600
Hancock	13.317	-	5	0.030	-	13.347	18,600,000	-	0
Harrison	-	-	-	-	-	-	-	-	0
Hinds	-	-	-	-	-	-	226,100	-	0
Holmes	-	-	-	-	-	-	-	17.240	1,255,400
Humphreys	-	-	-	-	-	-	-	-	0
Issaquena	-	-	-	-	-	-	-	-	0
Itawamba	0.171	-	1	0.023	-	0.194	467,400	0.143	126,600
Jackson	-	-	-	-	-	-	-	-	0
Jasper	0.516	-	3	0.085	-	0.601	1,688,300	-	0
Jefferson	0.286	-	1	0.007	-	0.293	535,500	45.531	1,314,300
Jefferson Davis	-	-	-	-	-	-	586,739	-	0
Jones	-	-	-	-	-	-	2,784,562	7.767	814,800
Kemper	-	-	-	-	-	-	-	-	0
Lafayette	-	-	-	-	-	-	-	7.202	680,600
Lamar	3.333	-	1	0.008	-	3.341	2,182,000	5.253	1,100,100
Lauderdale	0.131	-	-	-	-	0.131	376,400	0.484	0
Lawrence	-	-	-	-	-	-	382,535	-	0
Leake	-	-	-	-	-	-	-	42.652	939,800
Lee	-	-	-	-	-	-	-	68.575	2,175,100
Leflore	-	-	-	-	-	-	-	-	0
Lincoln	2.725	-	-	-	-	2.725	1,376,386	-	0
Lowndes	-	-	-	-	1.759	1.759	881,600	-	0
Madison	-	-	-	-	-	-	-	-	0

## IMPROVEMENTS LETS TO CONTRACT FROM JULY 1, 2005, THRU JUNE 30, 2006

County	Construction Miles and Cost							Reseal & Maintenance	
	Surfacing	Grading & Gravel	Bridges		Resurfacing	Total Miles	Cost	Miles	Cost
			#	Miles					
Marion	0.109	-	1	0.045	-	0.154	1,728,602	-	0
Marshall	1.788	-	1	0.121	-	1.909	2,164,700	-	0
Monroe	1.082	-	1	0.009	-	1.091	1,133,000	-	0
Montgomery	-	-	-	-	3.382	3.382	425,400	-	0
Neshoba	2.926	-	-	-	-	2.926	1,243,700	0.424	657,100
Newton	3.575	-	2	0.090	-	3.665	1,983,300	49.667	1,208,800
Noxubee	-	-	-	-	-	-	-	-	0
Oktibbeha	0.215	-	2	0.031	-	0.246	491,100	-	0
Panola	-	-	-	-	6.911	6.911	2,508,600	-	0
Pearl River	0.143	-	1	0.060	4.903	5.106	4,394,904	-	0
Perry	0.326	-	2	0.023	-	0.349	798,700	41.813	1,038,600
Pike	1.127	-	2	0.027	-	1.154	1,840,300	-	0
Pontotoc	-	0.346	1	0.023	-	0.369	495,500	-	0
Prentiss	0.098	-	1	0.020	-	0.118	321,500	-	0
Quitman	-	-	-	-	2.742	2.742	928,400	19.334	1,682,000
Rankin	3.441	-	-	-	-	3.441	2,193,400	-	0
Scott	-	-	-	-	-	-	-	37.202	1,217,900
Sharkey	-	-	-	-	-	-	-	0.417	0
Simpson	0.313	-	2	0.108	-	0.421	2,082,081	-	0
Smith	0.851	-	2	0.095	-	0.946	1,554,200	-	0
Stone	-	-	-	-	-	-	-	-	0
Sunflower	-	2.992	-	-	-	2.992	1,244,700	24.199	1,447,900
Tallahatchie	-	-	-	-	-	-	-	-	0
Tate	-	-	-	-	-	-	-	4.128	713,900
Tippah	1.419	-	-	-	0.172	1.591	1,103,700	28.847	879,200
Tishomingo	0.096	-	1	0.017	-	0.113	288,800	5.626	500,500
Tunica	-	-	-	-	-	-	-	-	0
Union	-	0.160	1	0.017	-	0.177	257,600	-	0
Walthall	-	-	-	-	-	-	791,713	0.138	528,600
Warren	-	-	-	-	-	-	-	-	0
Washington	-	-	-	-	-	-	-	-	0
Wayne	-	-	-	-	-	-	1,692,242	-	0
Webster	0.229	-	1	0.034	-	0.263	585,590	18.554	626,700
Wilkinson	-	-	-	-	-	-	21,636	33.315	1,330,500
Winston	5.379	-	-	-	-	5.379	1,102,800	-	0
Yalobusha	0.215	-	1	0.030	-	0.245	494,100	-	0
Yazoo	-	-	-	-	-	-	-	302.985	395,800
Statewide							1,335,530		
Totals	49.454	3.704	52	1.245	23.994	78.397	76,742,289	1,095.212	27,478,800

**OFFICE OF STATE AID ROAD CONSTRUCTION**

**FY 2006 ANNUAL REPORT**

**IMPROVEMENTS MADE ON THE STATE AID SYSTEM FROM JUNE 30, 1950, THRU JUNE 20, 2006**

County	State Aid Mileage		State Aid Improvements								Funds Expended or Obligated	
	Total	Actually	Paved	Grading &	Brs. Structural		Total	Overlay	Total	Surfacing	To Contact	
	Allocation	Designated			Mileage	Grav. Surf.					#	Miles
Adams	244.42	190.60	47.187	0.742	19	0.604	48.533	37.698	86.231	97.470	18,497,851	2,094,056
Alcorn	280.16	177.60	112.200	1.788	48	0.957	114.945	27.107	142.052	262.832	20,887,416	4,451,921
Amite	398.65	253.15	189.505	3.889	51	1.339	194.733	55.216	249.949	584.328	25,741,318	7,876,245
Attala	345.03	250.85	139.888	8.707	62	1.520	150.115	-	150.115	535.173	23,384,577	5,924,698
Benton	205.57	167.00	102.025	9.564	32	0.609	112.198	-	112.198	171.068	13,713,406	2,753,702
Bolivar	339.41	202.70	98.835	7.117	46	0.874	106.826	80.137	186.963	207.487	22,989,084	4,800,249
Calhoun	321.72	235.30	128.284	15.738	85	1.523	145.545	47.753	193.298	448.680	21,164,052	5,567,143
Carroll	300.74	203.20	109.366	13.025	64	1.371	123.762	46.056	169.818	300.827	20,404,188	5,515,212
Chickasaw	247.19	195.88	104.970	15.353	65	1.317	121.640	0.463	122.103	290.418	16,463,326	4,782,093
Choctaw	235.68	199.70	111.684	30.469	82	1.471	143.624	0.225	143.849	327.534	18,313,648	6,023,306
Claiborne	240.12	154.50	92.636	10.000	25	1.202	103.838	86.751	190.589	221.831	21,347,291	4,857,177
Clarke	370.67	291.00	206.015	0.862	54	1.519	208.396	32.970	241.366	669.834	24,099,969	7,896,658
Clay	223.90	168.00	96.935	9.725	63	1.499	108.159	28.563	136.722	277.944	28,949,125	5,268,247
Coahoma	340.37	216.10	150.493	1.345	27	0.793	152.631	160.262	312.893	339.717	23,343,655	4,644,301
Copiah	442.94	387.70	240.339	4.415	106	2.654	247.408	23.305	270.713	645.405	36,942,784	7,975,675
Covington	289.12	223.80	145.842	2.344	73	2.328	150.514	9.994	160.508	544.669	18,897,500	6,047,751
DeSoto	345.17	193.40	108.691	20.603	51	1.054	130.348	25.861	156.209	161.356	20,733,254	6,273,475
Forrest	319.89	260.60	63.656	5.608	70	2.105	71.369	63.902	135.271	310.567	22,527,391	6,105,105
Franklin	398.65	225.88	154.972	0.980	39	1.596	157.548	37.215	194.763	412.054	25,728,562	6,754,754
George	258.73	177.30	123.878	5.210	46	1.109	130.197	11.302	141.499	293.555	17,602,032	5,376,687
Greene	412.64	290.30	207.278	9.549	90	2.087	218.914	39.261	258.175	454.205	37,069,445	4,540,580
Grenada	214.27	156.20	101.101	1.914	31	0.740	103.755	25.741	129.496	391.950	29,488,095	5,404,714
Hancock	251.92	163.20	96.943	10.139	41	0.675	107.757	23.201	130.958	183.347	31,982,599	4,879,716
Harrison	414.63	267.70	140.997	1.871	53	2.009	144.877	22.187	167.064	381.071	32,953,201	8,215,810
Hinds	440.95	367.00	247.522	1.504	36	1.284	250.310	82.688	332.998	198.859	27,711,301	4,890,129
Holmes	445.27	322.40	218.708	18.381	60	1.410	238.499	66.023	304.522	679.051	27,747,198	8,262,024
Humphreys	223.26	204.90	111.017	16.225	32	0.576	127.818	7.143	134.961	217.800	13,150,297	3,942,269
Issaquena	128.89	91.10	36.131	21.852	7	0.161	58.144	28.007	86.151	100.074	6,584,520	3,378,232
Itawamba	326.98	222.35	160.895	6.298	78	1.688	168.881	13.439	182.320	314.416	24,319,653	5,653,968
Jackson	351.66	146.30	60.149	6.723	28	1.517	68.389	7.893	76.282	87.990	19,885,750	5,447,710
Jasper	307.73	291.40	172.617	4.278	74	1.850	178.745	26.025	204.770	387.136	25,863,338	5,257,250
Jefferson	221.47	160.30	74.806	6.345	44	1.048	82.199	21.256	103.455	275.992	15,075,478	4,341,177



**OFFICE OF STATE AID ROAD CONSTRUCTION**

**FY 2006 ANNUAL REPORT**

**IMPROVEMENTS MADE ON THE STATE AID SYSTEM FROM JUNE 30, 1950, THRU JUNE 20, 2006**

County	State Aid Mileage		State Aid Improvements								Funds Expended or Obligated	
	Total	Actually	Paved	Grading &	Brs. Structural		Total	Overlay	Total	Surfacing	To Contact	
	Allocation	Designated			Mileage	Grav. Surf.					#	Miles
Jefferson Dav	251.58	188.80	112.775	3.829	54	1.233	117.837	45.476	163.313	359.894	15,463,463	7,070,408
Jones	502.20	329.30	179.037	30.507	76	2.258	211.802	49.439	261.241	522.324	33,521,950	7,867,989
Kemper	382.33	288.35	205.216	34.444	84	1.496	241.156	29.968	271.124	360.768	27,658,116	4,941,148
Lafayette	341.95	184.70	107.014	8.410	94	1.850	117.274	28.876	146.150	328.850	21,445,285	4,640,753
Lamar	318.10	207.78	110.633	1.474	51	1.514	113.621	87.450	201.071	477.451	19,746,622	7,293,540
Lauderdale	439.39	412.30	249.738	1.619	62	1.314	252.671	96.368	349.039	461.710	24,343,517	8,459,098
Lawrence	261.10	212.82	120.260	8.177	58	1.407	129.844	65.999	195.843	399.586	25,364,588	5,698,371
Leake	296.54	223.33	146.788	11.073	60	1.455	159.316	15.997	175.313	332.781	25,639,277	4,503,269
Lee	343.24	194.40	107.020	17.876	68	1.258	126.154	19.648	145.802	356.914	25,025,422	8,561,046
Leflore	311.14	275.90	134.409	5.456	59	2.585	142.450	6.988	149.438	522.060	23,447,914	7,691,670
Lincoln	433.62	360.20	197.815	4.187	68	1.825	203.827	31.596	235.423	501.465	34,535,548	6,596,852
Lowndes	334.88	189.00	111.944	6.966	59	1.272	120.182	118.537	238.719	290.509	27,286,101	5,439,887
Madison	369.85	285.30	154.445	3.352	55	1.353	159.150	52.124	211.274	421.207	25,440,484	4,383,339
Marion	331.94	286.10	183.331	3.838	62	1.226	188.395	92.845	281.240	546.836	19,973,937	7,761,672
Marshall	315.61	211.00	115.888	8.431	40	1.482	125.801	6.191	131.992	172.532	28,262,868	2,492,138
Monroe	328.95	203.70	142.288	7.454	45	0.904	150.646	26.800	177.446	356.798	21,845,935	5,886,223
Montgomery	251.78	209.45	89.916	24.223	80	1.509	115.648	10.429	126.077	275.509	19,279,653	5,025,654
Neshoba	377.67	312.20	182.902	34.354	87	1.514	218.770	9.884	228.654	344.536	28,397,991	4,644,892
Newton	296.86	273.00	170.323	6.404	66	1.042	177.769	12.234	190.003	318.597	21,916,099	4,738,648
Noxubee	317.05	222.00	127.970	6.353	55	1.088	135.411	19.013	154.424	332.594	22,265,011	4,255,290
Oktibbeha	285.13	202.40	130.932	10.148	20	0.347	141.427	21.228	162.655	408.148	15,363,564	4,191,797
Panola	380.40	250.40	157.428	6.412	54	1.174	165.014	113.973	278.987	412.390	29,479,321	3,963,110
Pearl River	410.01	239.60	145.986	14.277	59	1.784	162.047	43.917	205.964	533.622	24,571,674	7,488,520
Perry	286.75	223.80	92.677	6.040	64	1.519	100.236	32.700	132.936	408.103	20,780,152	5,762,006
Pike	338.50	257.10	130.473	15.350	56	1.239	147.062	7.637	154.699	447.221	19,297,029	8,297,238
Pontotoc	267.15	180.09	98.043	10.225	24	0.563	108.831	4.712	113.543	229.088	14,278,726	5,522,826
Prentiss	281.65	198.52	121.880	20.222	66	1.300	143.402	22.492	165.894	235.891	20,923,024	4,555,154
Quitman	217.38	184.60	86.054	6.238	49	1.346	93.638	24.492	118.130	133.779	15,847,925	3,466,694
Rankin	541.49	270.20	139.587	10.242	81	1.514	151.343	92.167	243.510	266.219	41,766,272	5,698,863
Scott	310.55	223.30	135.192	15.120	80	1.162	151.474	11.786	163.260	359.176	18,046,901	6,628,032
Sharkey	164.28	111.60	73.556	14.392	15	0.468	88.416	36.992	125.408	162.156	10,506,287	4,252,596
Simpson	348.73	286.75	171.221	3.872	77	1.936	177.029	20.196	197.225	485.466	25,401,900	5,545,603

**OFFICE OF STATE AID ROAD CONSTRUCTION**

**FY 2006 ANNUAL REPORT**

**IMPROVEMENTS MADE ON THE STATE AID SYSTEM FROM JUNE 30, 1950, THRU JUNE 20, 2006**

County	State Aid Mileage		State Aid Improvements								Funds Expended or Obligated	
	Total	Actually	Paved	Grading &	Brs. Structural		Total	Overlay	Total	Surfacing	To Contact	
	Allocation	Designated			Mileage	Grav. Surf.					#	Miles
Smith	321.72	260.00	182.763	10.627	66	1.816	195.206	10.445	205.651	473.303	26,509,271	5,714,492
Stone	223.60	181.90	125.032	2.088	29	0.584	127.704	43.593	171.297	295.569	13,225,604	3,445,860
Sunflower	412.64	249.80	137.842	22.194	51	1.560	161.596	55.264	216.860	236.221	29,765,941	5,064,958
Tallahatchie	296.07	289.43	140.561	21.601	38	1.221	163.383	23.341	186.724	419.578	18,907,435	5,892,835
Tate	244.16	164.80	50.944	17.418	58	1.674	70.036	22.070	92.106	152.786	17,363,531	3,491,206
Tippah	290.95	217.30	138.156	13.654	50	0.789	152.599	9.368	161.967	238.728	21,922,051	3,270,569
Tishomingo	263.67	202.10	122.528	4.107	54	1.170	127.805	62.973	190.778	146.123	21,461,122	5,317,519
Tunica	242.45	204.20	139.189	12.521	78	0.582	152.292	92.584	244.876	194.350	17,609,073	4,178,591
Union	277.64	188.10	106.778	16.112	43	0.925	123.815	17.358	141.173	170.001	22,800,483	3,890,387
Walthall	274.85	218.86	126.857	3.129	68	1.325	131.311	28.163	159.474	479.610	17,554,850	8,336,229
Warren	284.23	193.20	68.916	8.015	29	0.762	77.693	47.143	124.836	198.998	19,828,266	3,274,756
Washington	377.67	359.50	77.808	0.499	54	1.688	79.995	71.274	151.269	105.026	30,593,562	5,186,288
Wayne	410.31	372.10	221.180	11.439	70	1.736	234.355	8.297	242.652	632.384	26,666,456	9,772,871
Webster	277.42	208.20	106.923	7.263	75	1.217	115.403	5.187	120.590	532.608	16,729,226	7,778,285
Wilkinson	223.80	152.90	93.687	1.636	29	0.819	96.142	39.793	135.935	274.195	15,425,776	5,054,172
Winston	296.54	277.95	198.115	34.845	61	1.118	234.078	23.093	257.171	264.977	25,208,295	2,935,192
Yalobusha	212.75	176.70	99.140	1.284	43	0.805	101.229	-	101.229	464.663	14,028,647	5,402,734
Yazoo	400.98	317.80	211.406	11.204	36	1.415	224.025	104.119	328.144	807.118	24,363,103	8,979,462
<b>Totals</b>	<b>25,857.04</b>	<b>18,990.24</b>	<b>10,936.131</b>	<b>833.164</b>	<b>4,542</b>	<b>107.632</b>	<b>11,876.927</b>	<b>3,059.863</b>	<b>14,936.790</b>	<b>28,625.058</b>	<b>1,860,646,554</b>	<b>455,512,770</b>

STATE AID PROGRAM CONSTRUCTION AND ENGINEERING DISBURSEMENTS BY COUNTY AND SYSTEM FROM JULY 1, 2005, THRU JUNE 30, 2006

COUNTY	RR CROSSING RRS/STP-C & RR SIGNAL RRP/STP-S 01 & 02	MDOT HIGH PRIORITY MS 19	RURAL SECONDARY GRADE RSG/STPG 32	ACCESS HIGHWAY LAKES AHL 34	APPALACHIAN ACCESS HIGHWAY APL 36	PUBLIC LAND HIGHWAYS PLH 62	DEFENSE ACCESS AGMC 64	EMERGENCY RELIEF 66	CONGESTION RELIEF 68	LOCAL SYSTEM ROAD PROJECTS 80	STATE AID PROJECTS SAP 81	SURFACE TRANSPORTATION RURAL COUNTIES STP 82 & 46	BRIDGE REPLACEMENT BR 85	TOTALS BY COUNTY
Adams											860539.89		892049	1752588.89
Alcorn					25601.27						236179.43	394245.12	29853.44	685879.26
Amite											1139313.77	428766.89	461170.72	2029251.38
Attala											875		602823.69	603698.69
Benton									68770.87		223648.56			292419.43
Bolivar											759608.79		354186.08	1113794.87
Calhoun											1284556.71	106751.69	185294.58	1576602.98
Carroll											1325852.71		800148.39	2126001.1
Chickasaw											790559.83		200613.56	991173.39
Choctaw					199094.99						46689.61		42714.46	288499.06
Claiborne											610452.94		1207239.16	1817692.1
Clarke											772696.35			772696.35
Clay											1,618,066.29	44,107.57	890,405.06	2552578.92
Coahoma											307265.94	84666.07		391932.01
Copiah											1809292.86	45212.96	1443112.62	3297618.44
Covington											594172.03		1168212.87	1762384.9
DeSoto											1604125.48			1604125.48
Forrest											612186.85			612186.85
Franklin										29884.1	333335.36		193776.31	556995.77
George											852925.53	4729.7	6022	863677.23
Greene											859828.31		3523360.34	4383188.65
Grenada							425391.55							425391.55
Hancock											1028548.82	281598.88		1310147.7
Harrison											148314.02		150714.95	299028.97
Hinds		89638									183556.36			273194.36
Holmes											521786.27	36985.48		558771.75
Humphreys											58418.8			58418.8
Issaquena											26878.17		178730.8	205608.97
Itawamba					709978.19						26968.82		418144.99	1155092
Jackson											23345.4	559476.01	468428.98	1051250.39
Jasper											646598.83	18734.6	711747.2	1377080.63
Jefferson											209125.81		15829.95	224955.76
Jeff Davis											1549603.93	72911.98		1622515.91
Jones											1555607.29	142028.74	1037919.23	2735555.26
Kemper											1,716,873.84	172,874.96		1889748.8
Lafayette											456355.22		45695.1	502050.32
Lamar											394108.46		65322.34	459430.8
Lauderdale											1890810.35	73874.95		1964685.3

STATE AID PROGRAM CONSTRUCTION AND ENGINEERING DISBURSEMENTS BY COUNTY AND SYSTEM FROM JULY 1, 2005, THRU JUNE 30, 2006

COUNTY	RR CROSSING RRS/STP-C & RR SIGNAL RRP/STP-S 01 & 02	MDOT HIGH PRIORITY MS 19	RURAL SECONDARY GRADE RSG/STPG 32	ACCESS HIGHWAY LAKES AHL 34	APPALACHIAN ACCESS HIGHWAY APL 36	PUBLIC LAND HIGHWAYS PLH 62	DEFENSE ACCESS AGMC 64	EMERGENCY RELIEF 66	CONGESTION RELIEF 68	LOCAL SYSTEM ROAD PROJECTS 80	STATE AID PROJECTS SAP 81	SURFACE TRANSPORTATION RURAL COUNTIES STP 82 & 46	BRIDGE REPLACEMENT BR 85	TOTALS BY COUNTY
Lawrence		1181411									643808.07		33562.95	1858782.02
Leake											198034.1	18986.24	356476.16	573496.5
Lee											153,456.49	21,895.93	358,679.74	534032.16
Leflore											1566071.53	13692.76		1579764.29
Lincoln						64518					276383.86	85762.75	1402403.34	1829067.95
Lowndes					27144.09						2197828.89		126290.88	2351263.86
Madison											793627.7		1004342.41	1797970.11
Marion											351754.1		15678.96	367433.06
Marshall					272690.45						561563.07	16261.96	39052.5	889567.98
Monroe											170143.33			170143.33
Montgomery											288753.68		882701.55	1171455.23
Neshoba											44227.52	424059.12	28076.77	496363.41
Newton			128281.01									53689.62	217676.96	399647.59
Noxubee					9032.82						916097.58			925130.4
Oktibbeha											332983.53			332983.53
Panola		201061.46									1064917.32		121988.77	1387967.55
Pearl River											1413138.06	9349.34	32094.58	1454581.98
Perry											854685.43	16550.93	68443.61	939679.97
Pike											192466.92		522756.8	715223.72
Pontotoc											1517323.98			1517323.98
Prentiss					9813.65						338647.96		88202.21	436663.82
Quitman											90697.49	126871.05		217568.54
Rankin		2606319.06									186128.97	2071.3		2794519.33
Scott											78524.24		80765.09	159289.33
Sharkey											39114.46	395080.68		434195.14
Simpson											437829.25		753478.92	1191308.17
Smith											891081.4	89227.71	410455.33	1390764.44
Stone												15144.92		15144.92
Sunflower											463400.38			463400.38
Tallahatchie		265464.87									217689.45		30848.1	514002.42
Tate											570727.32	263213.98	300676.19	1134617.49
Tippah										15,398.96	423,805.09	73,553.86	35,605.63	548363.54
Tishomingo											240988.65			240988.65
Tunica											2527902.81			2527902.81
Union											1298106.63		26312.69	1324419.32
Walthall											1319862.58	109165.61	308812.3	1737840.49
Warren								221423.46			1630900.71			1852324.17
Washington						30510.38					274938.63		1912933.71	2218382.72

STATE AID PROGRAM CONSTRUCTION AND ENGINEERING DISBURSEMENTS BY COUNTY AND SYSTEM FROM JULY 1, 2005, THRU JUNE 30, 2006

COUNTY	RR CROSSING RRS/STP-C & RR SIGNAL RRP/STP-S 01 & 02	MDOT HIGH PRIORITY MS 19	RURAL SECONDARY GRADE RSG/STPG 32	ACCESS HIGHWAY LAKES AHL 34	APPALACHIAN ACCESS HIGHWAY APL 36	PUBLIC LAND HIGHWAYS PLH 62	DEFENSE ACCESS AGMC 64	EMERGENCY RELIEF 66	CONGESTION RELIEF 68	LOCAL SYSTEM ROAD PROJECTS 80	STATE AID PROJECTS SAP 81	SURFACE TRANSPORTATION RURAL COUNTIES STP 82 & 46	BRIDGE REPLACEMENT BR 85	TOTALS BY COUNTY
Wayne											666838.47	10143.4		676981.87
Webster											1167490.31		315901.77	1483392.08
Wilkinson											7348.88	416250.17	365687.8	789286.85
Winston						31533.84					463834.78		538119.03	1033487.65
Yalobusha											728069.49	18382.88	76068.22	822520.59
Yazoo											1229113.51	1820.4		1230933.91
Service Center *											10818.59			10818.59
Statewide **													314353.38	314353.38
<b>TOTALS BY</b>	<b>0.00</b>	<b>4,343,894.39</b>	<b>128,281.01</b>	<b>0.00</b>	<b>1,253,355.46</b>	<b>126,562.22</b>	<b>425,391.55</b>	<b>221,423.46</b>	<b>0.00</b>	<b>114,053.93</b>	<b>55,920,197.84</b>	<b>4,648,140.21</b>	<b>25,861,962.17</b>	<b>93,043,262.24</b>

\* System 81, Testing Charges paid to Calvert on SAP 99 99 and to Simmons on SAP 99 100

\*\* System 82, Wetland Mitigation; System 85, Bridge Inspection and Bridge Posting Projects

**LOCAL SYSTEM BRIDGE PROGRAM CONSTRUCTION AND ENGINEERING DISBURSEMENTS  
BY COUNTY AND SYSTEM FROM JULY 1, 2005, THRU JUNE 20, 2006**

COUNTY	LOCAL SYSTEM ROAD PROJECTS	LOCAL SYSTEM BRIDGE PROJECTS	TOTALS BY COUNTY
	80	81	
Adams			0.00
Alcorn		52,432.12	52,432.12
Amite		77,998.76	77,998.76
Attala		243,595.65	243,595.65
Benton		10,808.59	10,808.59
Bolivar		348,707.31	348,707.31
Calhoun		297,791.99	297,791.99
Carroll		19,848.25	19,848.25
Chickasaw		81,547.92	81,547.92
Choctaw			0.00
Claiborne		41,729.64	41,729.64
Clarke		8,659.77	8,659.77
Clay		43,678.04	43,678.04
Coahoma		16,133.69	16,133.69
Copiah		136,973.97	136,973.97
Covington		159,703.48	159,703.48
DeSoto		165,273.83	165,273.83
Forrest		239,486.80	239,486.80
Franklin		378,915.76	378,915.76
George		141,523.16	141,523.16
Greene			0.00
Grenada	196,614.44		196,614.44
Hancock			0.00
Harrison			0.00
Hinds		19,792.40	19,792.40
Holmes		215,201.27	215,201.27
Humphreys		558,042.96	558,042.96
Issaquena			0.00
Itawamba		20,668.32	20,668.32
Jackson		11,381.90	11,381.90
Jasper		215,154.59	215,154.59
Jefferson			0.00
Jeff Davis			0.00
Jones		5,304.60	5,304.60
Kemper		23,617.94	23,617.94
Lafayette		138,880.04	138,880.04
Lamar		75,620.96	75,620.96
Lauderdale		21,441.30	21,441.30
Lawrence		101,533.02	101,533.02
Leake		86,995.55	86,995.55
Lee		139,899.29	139,899.29

**LOCAL SYSTEM BRIDGE PROGRAM CONSTRUCTION AND ENGINEERING DISBURSEMENTS  
BY COUNTY AND SYSTEM FROM JULY 1, 2005, THRU JUNE 20, 2006**

COUNTY	LOCAL SYSTEM ROAD PROJECTS	LOCAL SYSTEM BRIDGE PROJECTS	TOTALS BY COUNTY
	80	81	
Leflore			0.00
Lincoln		12,682.92	12,682.92
Lowndes		281,100.53	281,100.53
Madison			0.00
Marion		231,446.08	231,446.08
Marshall		72,250.78	72,250.78
Monroe			0.00
Montgomery		24,126.48	24,126.48
Neshoba			0.00
Newton		1,860.10	1,860.10
Noxubee		137,361.94	137,361.94
Oktibbeha			0.00
Panola		532,283.35	532,283.35
Pearl River		199,066.71	199,066.71
Perry		144,642.09	144,642.09
Pike		185,308.60	185,308.60
Pontotoc		12,665.05	12,665.05
Prentiss		94,438.96	94,438.96
Quitman		11,365.85	11,365.85
Rankin		328,071.06	328,071.06
Scott		65,997.81	65,997.81
Sharkey			0.00
Simpson		27,187.84	27,187.84
Smith		16,524.59	16,524.59
Stone		110,421.74	110,421.74
Sunflower		14,854.31	14,854.31
Tallahatchie			0.00
Tate		20,492.41	20,492.41
Tippah		208,469.91	208,469.91
Tishomingo		20,392.99	20,392.99
Tunica			0.00
Union		11,273.40	11,273.40
Walthall			0.00
Warren		268,255.25	268,255.25
Washington		454,568.34	454,568.34
Wayne		27,666.82	27,666.82
Webster			0.00
Wilkinson		9,082.44	9,082.44
Winston		531,696.24	531,696.24
Yalabusha			0.00
Yazoo		481,766.00	481,766.00
<b>TOTALS BY SYS</b>	<b>196,614.44</b>	<b>8,635,663.46</b>	<b>8,832,277.90</b>

This page intentionally left blank.