

**OFFICE OF STATE AID  
ROAD CONSTRUCTION**



**Annual Report  
Fiscal Year 2011**



**OFFICE OF  
STATE AID ROAD CONSTRUCTION**

MISSISSIPPI DEPARTMENT OF TRANSPORTATION  
P. O. BOX 1850  
JACKSON, MISSISSIPPI 39215-1850

*J. Brooks Miller, Sr., P.E.  
State Aid Engineer  
Tele 601-359-7150  
www.osarc.state.ms.us*

*412 Woodrow Wilson Ave.  
Jackson, Mississippi 39216  
Fax 601-359-7141  
mail@osarc.state.ms.us*

September 7, 2011

The Honorable Haley Barbour, Governor, and  
Members of the Mississippi Legislature

Ladies and Gentlemen:

RE: Annual Report, Office of State Aid Road Construction  
Fiscal Year July 1, 2010 thru June 30, 2011

Please accept this letter as notification that the Office of State Aid Road Construction has posted our Fiscal Year 2011 Annual Report on our website. The Office of State Aid Road Construction did not print the Annual Report, but placed it on our website for convenient access. The State Aid Engineer respectfully submits this Annual Report of the Operations of the Office of State Aid Road Construction for Fiscal Year 2011.

Included in the report are operation summaries of the past fiscal year, together with a brief summary of the overall background and functions of the office at the state and county levels. We hope that this information will be of interest and help to the Governor and all members of the Legislature, as well as other individuals concerned with the State Aid Road Program.

During Fiscal Year 2011, the counties awarded \$108,828,366 in construction contracts. This was comprised of \$47,227,384 for State Aid (SAP) projects, \$38,831,370 for Federal Aid projects [which included \$15,223,300 for Bridge Replacement (BR) projects] and \$22,769,612 for Local System Bridge Program (LSBP) projects.

The State Aid Program continues to contribute to the construction and maintenance of roads and bridges in all counties of the state. Many employment opportunities are provided during the actual construction of State Aid projects.

You may access our FY 2011 Annual Report via our agency website at [www.msstateaidroads.us](http://www.msstateaidroads.us), click on "About State Aid" in the left column, scroll down to the bottom of the page and click on "Fiscal Year 2011 Annual Report" or you may type the following link in your address bar [http://www.msstateaidroads.us/downloads/Public/Office of State Aid Road Construction-FY 2011 Annual Report.pdf](http://www.msstateaidroads.us/downloads/Public/Office%20of%20State%20Aid%20Road%20Construction-FY%202011%20Annual%20Report.pdf)

If you would like to receive a printed copy of the report please contact Brandi Stuart at 601-359-7133 or by email at [bstuart@osarc.state.ms.us](mailto:bstuart@osarc.state.ms.us).

Your recommendations and continued support of the State Aid Program are greatly appreciated.

Sincerely,

  
J. Brooks Miller, Sr.  
State Aid Engineer

JBM:bws

**OFFICE OF STATE AID ROAD CONSTRUCTION**

**SUMMARY ANNUAL REPORT**

**FOR**

**THE FISCAL YEAR JULY 1, 2010 TO JUNE 30, 2011**

**TOGETHER WITH**

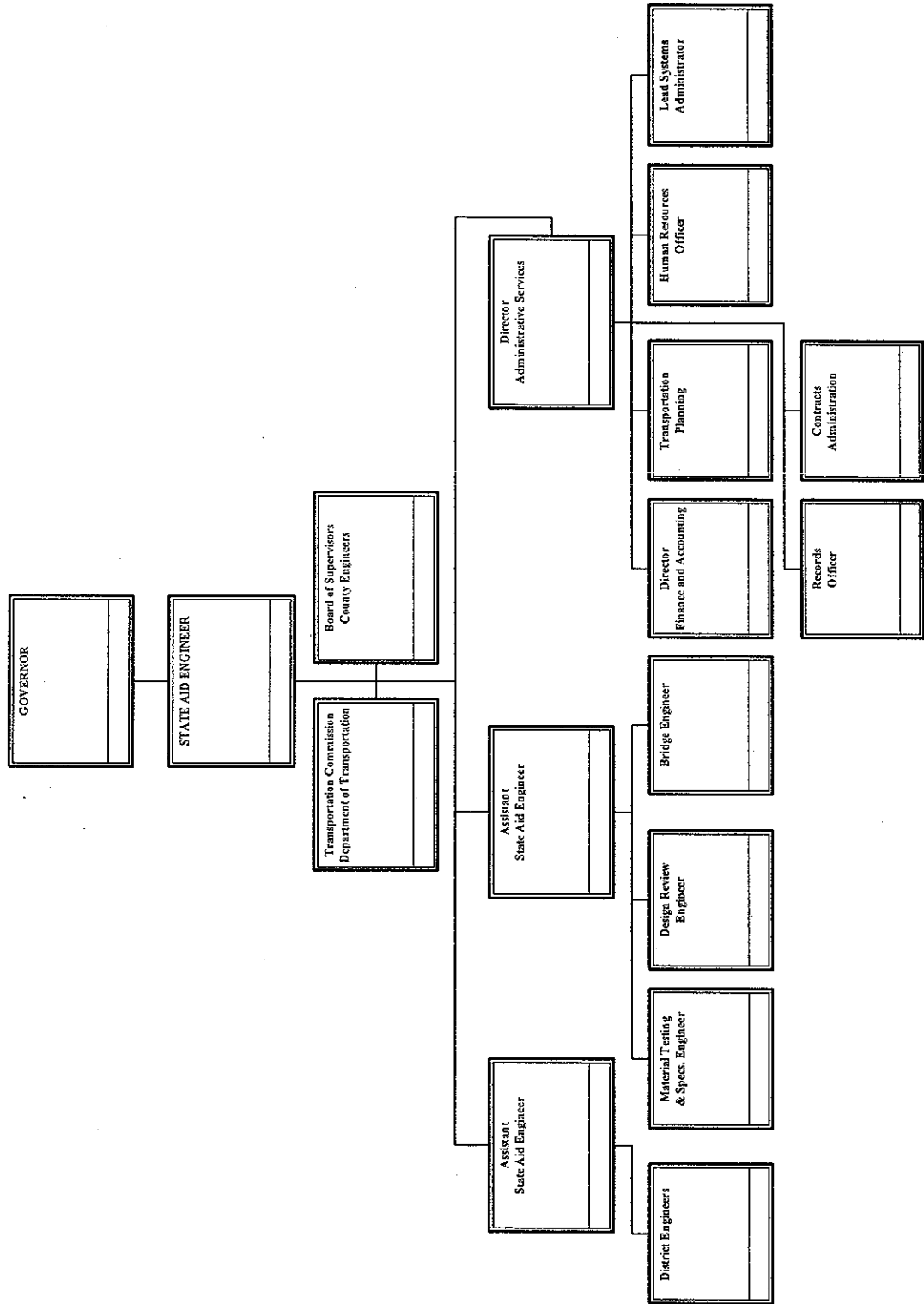
**A PROGRESS REPORT FROM THE BEGINNING OF THE**

**PROGRAM (MAY, 1950) TO JUNE 30, 2011**

**TABLE OF CONTENTS**

	<u>Page</u>
Organizational Chart	1
State Aid Road Program:	
Background of Program	2
Organization of Program	3
Operation of Program	4
Type or Character of Construction and Reseal Programs	5
Progress of Program	6
Revenue Sources and Amounts	11
Receipts and Disbursements	13
Funding Summary	14
Summary of Administrative Expenses	15
Out-of-State Travel to Conventions and Meetings	17
Automobile Expenditures for State-Owned Vehicles	18
Improvements Let to Contract from July 1, 2010 thru June 30, 2011	19
Improvements Made on State Aid System from June, 1950, thru June 30, 2011	21
State Aid Program Construction and Engineering Disbursements from July 1, 2010 thru June 30, 2011	25
Local System Bridge Program Construction and Engineering Disbursements from July 1, 2010, thru June 30, 2011	26

OFFICE OF STATE AID ROAD CONSTRUCTION  
ORGANIZATION CHART  
Fiscal Year 2011  
Annual Report



## **THE STATE AID ROAD PROGRAM**

This report primarily summarizes the operations and progress of the State Aid Program for the fiscal year July 1, 2010 to June 30, 2011.

It is considered appropriate, however, to include an overall background of the program covering the enabling legislation, organization and functions at the State Aid Office and county levels, total funds expended, and total construction improvements accomplished.

An estimate of the program volume anticipated for the fiscal year July 1, 2011 to June 30, 2012 is also included in the report.

### **BACKGROUND OF PROGRAM**

The State Aid Program had its beginning with the passage of Chapter 6, Laws of the Extraordinary Session of 1949 (Section 65-9-[1-33] of the Mississippi Code of 1972). This legislation provided for the creation of a division within the State Highway Department, to be known as the Division of State Aid Road Construction, and to be charged with the responsibility of administering the program at the state level. The 1992 Legislature passed Senate Bill 2763 which created the Mississippi Department of Transportation. Under this bill the State Highway Department became known as the Department of Transportation and the Division of State Aid Road Construction became known as the Office of State Aid Road Construction.

The Enabling Act also provided for a State Aid System, to be composed of the principal collector and distributor routes in the 82 counties, connecting with the State Highway System and other principal county roads to form a network of secondary roads for the state. This system was originally limited to 11,656.4 miles, with each county allocated a percentage of this eligible mileage. The State Legislature at its 1962 Regular Session increased the eligible system mileage to 23,312.8 miles. No change was made in the allocation percentages. In 1994, under House Bill 1302, the allocation percentages were revised and the eligible mileage was increased to 25,857.04 miles. There are 19,005.30 miles actually designated by the Boards and approved by the State Aid Engineer as of June 30, 2011.

The 1994 Regular Session of the Legislature passed House Bill 1302 which included the establishment of a Local System Bridge Replacement and Rehabilitation Program (LSBP), (Section 65-37[1-15] of the Mississippi Code of 1972). The program provides funding for replacement and rehabilitation of deficient bridges maintained by counties or municipalities excluding bridges on the State Aid System, the municipal urban system or the rural major collector system. The Office of State Aid Road Construction is charged with the responsibility of administering the LSBP program under rules and regulations promulgated by the State Aid Engineer.

The 2001 Regular Session of the Legislature passed Senate Bill No. 2318 which established the Local System Road Program (LSRP), (Section 65-18[1-17] of the Mississippi Code of 1972). The program gives the counties the ability to use LSBP and State Aid funds (subject to certain criteria) for the construction, reconstruction and paving of county roads not on the State Aid Road System.

## **ORGANIZATION OF PROGRAM**

### **Organization of the State Aid Office**

The State Aid Enabling Act provides that the Office of State Aid Road Construction be directed by a State Aid Engineer, who is appointed by the Governor for terms of four years each (as amended by the Legislature in 1985). It further provides that the State Aid Engineer hire assistant engineers and other employees necessary to carry out the duties and responsibilities set out in the enabling legislation.

The actual organization of the office began with the appointment of the first State Aid Engineer on May 11, 1950. The office was authorized in 2011 to have an organization for a staff of fifty-three (53) full-time employees, including fifteen (15) Registered Professional Engineers. All positions are approved by the Department of Finance and Administration and the State Personnel Board.

### **Organization at the County Level**

Each Board of Supervisors, as the governing agency of the county, is required by statute to appoint a County Engineer, who is a Registered Professional Engineer, to act for and on behalf of the Board and to administer the engineering functions at the county level, subject to the rules and regulations promulgated by the State Aid Engineer.

The Board is also required to appoint a Local System Bridge Engineer to administer the LSBP program at the county level. The duties of the LSBP Engineer parallel those of the County Engineer and the Board may elect to appoint the County Engineer as the LSBP Engineer.

## **OPERATION OF THE PROGRAM**

### **Operation of the Program at the County Level**

It is the responsibility of the Board of Supervisors to designate the roads to be included in the county's State Aid System; adopt annual construction programs; acquire rights-of-way for State Aid projects; advertise for bids; award contracts; and maintain completed projects after construction.

The County Engineers' responsibilities and duties include, but are not limited to, the following: Assist the Boards of Supervisors in the designation and modification of their State Aid Systems; prepare annual construction programs; make surveys and prepare detailed plans and designs; make field inspections with the State Aid Engineer's representatives; prepare proposals for advertisement for bids; attend lettings at the county level; provide engineering controls (staking, etc.); supervise and inspect construction; prepare estimates for payment to the contractors; and make annual maintenance inspections of completed projects.

### **Operation of the Program at the State Level**

It is the responsibility of the State Aid Engineer and his staff to prepare and adopt uniform design standards and specifications for the construction and maintenance of State Aid projects; approve all additions to the State Aid System; approve all construction programs, plans and specifications; authorize advertisement for bids; concur in the award of the contracts; approve and disburse all payments made from the project fund; approve the final acceptance of completed projects; and make annual and other periodic inspections of completed projects to see that they are properly maintained by the respective Boards of Supervisors.



## **TYPE OR CHARACTER OF CONSTRUCTION AND RESEAL PROGRAMS**

### **Construction**

During the early years of the program (the 1950's), many counties had a great need for bridges and graded roadways with a gravel surface, although many other counties began their State Aid Programs with the construction of hard-surfaced (blacktop) improvements.

It has been the objective throughout the program to construct roads that would connect with the State Highway System and other State Aid routes to form a network of secondary roads. At the present time, all programs now being approved provide for the future completion of a hard-surfaced facility.

The first hard-surfaced State Aid roads, which were completed in the beginning of the program, now need asphalt overlays. It will be noted from the summaries to follow in this report that a total of 3,723.12 miles of hot mix asphalt overlay construction (some surfaces were widened) has been accomplished. This points to the fact that the principal or arterial State Aid roads must now be upgraded to meet increasing traffic volumes and heavier loads. It is anticipated that the need for these betterments on the principal routes will continue to increase.

### **Maintenance and Reseal Work**

The original State Aid Act did not permit the use of State Aid funds for the reseal of existing bituminous surfaces, which work consists of a light application of liquid asphalt and a light application of a fine or seal aggregate to cover the asphalt. Reseal work is regarded as maintenance. The Legislature, during its 1962 Session, amended the law to permit the use of State Aid funds (not to exceed 10%) to reseal hard-surfaced roads which had been constructed through the use of State Aid Funds. This 10% limitation was eliminated during the 1982 Legislative Session.

Bituminous surface treatments need to be resealed on an average of every five or six years to protect the surfaces and the investments made therein. A total of 31,441.65 miles have been resealed, with 2,450.69 miles of this total being contracted during the 2011 fiscal year.

The Legislature, during the 1982 Regular Session, amended Section 65-9-25 of the Mississippi Code of 1972 to permit additional State Aid funds to be used for maintenance, repair and reconstruction of State Aid roads which have been constructed in accordance with State Aid standards and specifications.

**PROGRESS OF PROGRAM****Projects Placed Under Contract from July 1, 2010 thru June 30, 2011**

	#	Miles	Cost
LSBP Projects (83 Bridges Replaced)	63	7.381	22,769,612
LSRP (LSBP Funds)	3	6.979	2,754,300
LSRP (SA Funds)	3	3.589	1,052,065
Total LSBP and LSRP Projects (LSBP & SA Funds)	69		26,575,977
State Aid & Federal Aid Projects ( <u>including</u> Bridge Inspections)			
Construction			
Grading, Drainage Structures & Paving		233.885	
Grading, Drainage Structures & Gravel Surface		11.481	
Bridges		16.846	
Asphalt Overlay Construction		632.690	
Total Construction Improvements	81	894.902	58,362,199
Reseal & Maintenance Projects (Previously Paved State Aid Routes)	35	2,450.685	23,890,190
Total State Aid & Federal Aid Project ( <u>including</u> Bridge Inspections)	116		82,252,389
NOTE: The above totals, by Counties, are included elsewhere in this report.			
Amounts and Types of Funds Contracted:			
State Aid			40,657,658
County			2,763,361
Federal Funds:			
Surface Transportation			8,771,706
Appalachian Access			165,765
Bridge Replacement			15,223,300
Bridge Inspection			2,744,504
Eastern Federal Land Highway (EFLH)			2,214,450
High Priority			8,170,075
High Risk Rural Road (HRRRP)			1,354,370
Rural Safety Innovation (RSIP)			187,200
Total Funds Contracted			82,252,389
<b>Grand Total all Projects</b>	185		108,828,366

**Projects Completed and/or Placed Under Contract from Beginning of Program in June, 1950, thru June 30, 2011**

	#	Miles	Cost
LSBP Projects (1,688 Bridges Replaced)	992	173.001	289,890,706
LSRP (LSBP Funds)	8	20.963	6,551,000
LSRP (SA Funds)	14	13.799	5,625,560
<b>Total LSBP and LSRP Projects (LSBP &amp; SA Funds)</b>	<b>1,014</b>		<b>302,067,266</b>
State Aid & Federal Aid Project (including Bridge Inspections) Construction			
Grading, Drainage Structures & Paving		11,168.090	
Grading, Drainage Structures & Gravel Surface		842.363	
Bridges		12.323	
Asphalt Overlay Construction		44,083.119	
Total Construction Improvements	8,484	56,105.895	2,163,966,078
Reseal & Maintenance Projects (Previously Paved State Aid Routes)	1,564	30,598.093	609,397,357
<b>Total State Aid &amp; Federal Aid Project (including Bridge Inspections)</b>	<b>10,048</b>		<b>2,773,363,435</b>
<b>Grand Totals all Projects</b>	<b>11,062</b>		<b>3,075,430,701</b>

NOTE: The above totals, by Counties, are included elsewhere in this report.

**Projects in Contract Stage as of June 30, 2011**

	#	Miles	Cost
LSBP Projects	124	15.944	40,610,416
LSRP (LSBP Funds)	5	7.473	3,448,700
LSRP (SA Funds)	4	5.552	1,883,865
Total LSBP and LSRP Projects (LSBP & SA Funds)	<u>133</u>		<u>45,942,981</u>
State Aid Projects (State Aid Funds):			
Construction	36	32.990	21,823,761
Maintenance	31	478.350	21,021,906
Reseal	20	511.670	24,729,846
Federal Aid Projects (State Aid , Federal & LSBP Funds):			
Surface Transportation	21	41.526	13,057,410
STPG	2	173.174	941,000
Appalachian Access	3	1.808	2,056,979
Bridge Replacement	28	10.370	32,240,888
Bridge Inspection	3	0.000	5,420,694
Eastern Federal Land Highway (EFLH)	6	0.847	2,533,450
Emergency Relief	4	16.298	5,745,313
High Priority	34	115.869	51,647,062
High Risk Rural Road (HRRRP)	10	149.164	3,476,620
Public Land Highways	1	7.290	2,465,003
Total State Aid & Federal Aid Projects	<u>199</u>	<u>1,539.356</u>	<u>187,159,932</u>
<b>Grand Totals all Projects</b>	<u>332</u>	<u>1,568.325</u>	<u>233,102,913</u>

**Estimated Program Volume for July 1, 2010, thru June 30, 2011**

It is difficult to estimate the miles of construction and reseal improvements that will be let to contract during the coming fiscal year. However, the State Aid Road Construction Program has the potential for a \$100 to \$215 million total program for the fiscal year 2011. In addition, we expect to place under contract \$20 million in LSBP Funds.

As of June 30, 2011, programs (proposed improvements) have been adopted by the Boards of Supervisors and approved by the State Aid Engineer for the following work:

<b>Type of Projects</b>	<b>Number of Projects</b>	<b>Estimated Cost</b>
Total LSBP (System 81)	138	\$38,852,234
Total LSRP (LSBP Funds)(System 80)	0	\$0
Total LSRP (SA Funds)(System 80)	3	\$1,125,000
State Aid: (State Aid Funds Only)		
Construction (System 81)	30	\$15,305,060
Maintenance (System 81)	26	\$10,462,669
Reseal (System 81)	6	\$2,787,945
State Aid & Federal Aid Funds		
STP (System 82)	45	\$27,735,169
STPG (System 32)	2	\$861,900
APL (System 36)	5	\$1,782,815
BR (System 85)	76	\$65,101,262
EFLH (System 63)	15	\$6,221,067
ER (System 66)	10	\$653,007
HRRRP (System 25)	16	\$3,735,601
MS, FBD (System 19)	50	\$133,064,156
PLH (System 62)	2	\$296,349
<b>GRAND TOTAL</b>	<b>424</b>	<b>\$305,984,234</b>
Total State Aid	339	\$266,007,000

The Boards of Supervisors began the new four-year term on January 1, 2008, and have available for planning and expenditure purposes 90% of the State Aid revenue that will accrue during the 2008-2011 period.

Bridge Replacement and Rehabilitation is a major Federal program that has helped the counties to improve the seriously deficient condition of many State Aid and Federal Aid System bridges. Historically, the Mississippi Department of Transportation transferred approximately 30% of the Bridge Replacement funds that are apportioned to the State Aid program for replacement of deficient bridges on county roads. In fiscal year 2011, \$15,241,474 was transferred. State Aid is projected to receive for fiscal year 2012, \$15,000,000 to be transferred by Mississippi Department of Transportation.

The cost per mile for the construction of projects, embracing grading, drainage structures, small bridges, base and bituminous surfacing, ranges from \$253,619.42 per mile to \$2,264,850.70 per mile, depending on the soil conditions, availability of construction materials and terrain. The average cost of construction projects in fiscal year 2011 was \$920,093.19 per mile.

Projects involving large bridges with long spans and/or projects requiring higher design standards because of heavy traffic demands or other special conditions should not be considered in these cost ranges.

Liquid seal (resealing) projects range from \$35,025.87 to \$82,816.90 per mile, depending on the location and on the leveling and base course corrections needed. The average cost of reseal projects in fiscal year 2011 was \$54,258.95 per mile.

**REVENUE SOURCES AND AMOUNTS**

Revenues for the State Aid Program are derived from the following state and federal sources:

**State Sources:**

- (a) Section 27-65-75, Mississippi Code of 1972 (as amended by the 1994 and 1999 Regular Sessions of the Legislature), provides for a minimum diversion of \$48,000,000 or 23.25%, whichever is greater, from gasoline, diesel fuel or kerosene tax revenue and \$3,000,000 from sales tax collections into the Office of State Aid Road Construction special fund in each fiscal year. Senate Bill 2985 gave the Bond Commission authority to issue \$20 million in bonds for FY 2004 for the Local System Bridge Program (LSBP). In FY 2004 we received \$20 million for the FY 2004 bond issue. Senate Bill 2010 gave the Bond Commission authority to issue \$20 million in bonds for FY 2005 and \$20 million in bonds for FY 2006. In FY 2005 we received \$3 million in advance against the FY 2005 future bond issue. In FY 2006 we received \$17 million for the remainder of the FY 2005 bond issue and \$4 million in advance against the FY 2006 future bond issue. In FY 2007 we received \$6 million against the FY 2006 future bond issue. Senate Bill 3086 and 3201 gave the Bond Commission authority to issue \$20 million in bonds for FY 2007 and FY 2008 respectively. In FY 2008 we received \$10 million against the remaining FY2006 bond issue and \$10 million against the FY 2007 bond issue. In FY 2009 we received \$10 million against the FY 2007 bond issue and \$5 million against the FY 2008 bond issue. House Bill 1665 gave the Bond Commission authority to issue \$15 million in bonds for FY 2009. House Bill 1722 gave the Bond Commission authority to issue \$20 million for FY10. Senate Bill 3181 gave the Bond Commission authority to issue \$20 million for FY11. Senate Bill 3100 gave the Bond Commission authority to issue \$20 million for FY12. The State Treasurer and State Bond Commission have committed to issuing debt obligations when needed to provide funds to obligate to projects when bond proceeds are not yet available. However, the State Treasurer was on occasion unable to fulfill this commitment, thus causing delays in letting LSBP projects go to contract. The LSBP fund earned interest on investments in the amount of \$158,955.35 for FY 2011.
- (b) Section 65-9-17 authorizes the counties to use County funds to supplement State Aid funds for the construction of State Aid roads.
- (c) The Economic Development Highway Act (Code Section 65-4-1) authorizes the Mississippi Development Authority (MDA) to assist political subdivisions with Highway Projects which encourage private companies to engage in high economic benefit projects within their area. These funds are made available to the county(ies) or municipality(ies) on an individual project basis and are administered in accordance with guidelines established by the MDA. The Office of State Aid is responsible for administering MDA projects that are not on the State Highway System.

**Federal Sources (Regular):**

MDOT provides a portion of the Surface Transportation Program funds and Bridge Replacement funds made available to the State of Mississippi by the Federal Government to the counties through the State Aid Office.

**Federal Sources (Special):**

- (a) Emergency Relief funds are made available by the Federal Government to the counties through the State Aid Office on an individual project basis, to reconstruct roads and bridges on Federal Aid highways damaged or destroyed by floods, hurricanes, catastrophic failure and other disasters.
- (c) Appalachian Access Highway funds are made available to the counties in the twenty-four county Appalachian area in northeast Mississippi on an individual project basis. These projects are administered by the State Aid Office on an individual project basis through the Federal Highway Administration.
- (c) Other funds earmarked by Congress for selected counties.



**RECEIPTS AND DISBURSEMENTS**

	<b>State Aid Road Fund</b>	<b>Administration Fund</b>	<b>Local System Bridge Fund</b>
<b>BEGINNING FUNDS BALANCE 07/01/10</b>			
Unobligated Funds	5,292,595	246,006	(9,946,980)
Project Funds	37,383,522		16,396,616
Federal-Aid Matching Funds	(5,026,003)		
Total Beginning Funds Balance	37,650,114	246,006	6,449,636

**RECEIPTS**

Gasoline Tax(Section 27-65-75)	47,876,434	4,500,000	
Proceeds from the Sale of Bonds	19,870,189		39,740,378
Sales Tax(Section 27-65-75)	3,000,000		
County Contributions	3,771,449		531,375
FHWA Reimbursements	39,856,777		
Federal Aid Matching Requirements	2,722,684		
Interest on Investments			161,370
Transfers In/Out	(500,000)	500,000	
Total Receipts	116,597,534	5,000,000	40,433,124
Total Funds Available for Expenditures	154,247,648	5,246,006	46,882,760

**DISBURSEMENTS**

**Construction Expenditures**

State Construction	49,730,123		26,057,020
Federal-aid Construction	36,901,666		
Retainage	243,403		(244,194)
MDOT Testing	77,209		263,025
Total Construction	86,952,401		26,075,852

**Other Expenditures**

Transfers to State Highway Fund 3941	6,652,586		
Transfer to Administration Fund	4,500,000		
Transfer to Other Funds			
Payments on MDB Loan	2,481,515		
Administrative Expenditures		5,002,081	
Refund to Counties and Misc. Transfers	472,696		40,782
Total Other Disbursements	14,106,798	5,002,081	40,782
Total Disbursements	101,059,199	5,002,081	26,116,633

**ENDING FUND BALANCE 6/30/11**

Unobligated Funds	30,855,241	243,925	2,665,603
Project Funds	24,968,524		18,100,523
Federal-Aid Matching Funds	(2,635,317)		
Total Ending Funds Balance	53,188,448	243,925	20,766,126

**FUNDING SUMMARY**

**FUNDS MADE AVAILABLE DURING FY 2011**

Sources:

Gasoline Tax (Section 27-65-75)	47,876,434	
Sales Tax (Section 27-65-75)	3,000,000	
County Contributions	4,302,824	
Federal Aid Matching Requirements	2,722,684	
Interest on Investments	161,370	
Administrative Transfer from Counties	4,500,000	
Proceeds from the Sale of Bonds	59,740,378	
Transfers Out	(500,000)	
Federal Funds--		
FHWA Reimbursements	39,856,777	
Total Federal Funds	<u>39,856,777</u>	
Total Fiscal Year Revenue		<u>161,660,468</u>
Less: Requirements for Administrative Expenses		<u>(4,500,000)</u>
<b>Total Funds Made Available for Construction During FY 2011</b>		<b><u><u>157,160,468</u></u></b>

**PROJECTION OF REVENUE FOR FY 2012 AND FY 2013**

Sources:

	<b><u>FY 2012</u></b>	<b><u>FY 2013</u></b>
Gasoline Tax (Section 27-65-75)	57,000,000	57,000,000
Sales Tax (Section 27-65-75)	3,000,000	3,000,000
County Contributions	29,140,000	29,140,000
Federal Aid Matching Requirements	5,000,000	5,000,000
Miscellaneous State Aid Revenue	700,000	700,000
Local System Bridge Funds	40,000,000	40,000,000
Interest on Investments	160,000	160,000
Administrative Transfer from Counties	5,340,966	5,384,656
Federal Funds - FHWA Reimbursements	<u>55,000,000</u>	<u>55,000,000</u>
Total Fiscal Year Revenue	195,340,966	195,384,656
Less: Requirements for Administrative Expenses	(5,340,966)	(5,384,656)
<b>Total Revenue Available for Construction</b>	<b><u><u>190,000,000</u></u></b>	<b><u><u>190,000,000</u></u></b>

**SUMMARY OF ADMINISTRATIVE EXPENSES**

**Salaries, Wages and Fringe Benefits:**

Salaries and Wages	2,343,354	
Personal Leave Pay	16,311	
Retirement Matching	283,147	
Social Security Matching	172,277	
Workers' Compensation	9,022	
Group Health Insurance	206,214	
Group Life Insurance	5,120	
Unemployment Insurance Tax	4,697	
Cafeteria Plan	2,931	3,043,072
		<hr/>

**Travel:**

In-State	36,805	
Out-of-State	12,636	49,441
		<hr/>

**Contractual Services:**

Tuition & Employee Training	7,401	
Liability Insurance Contributions	18,679	
Postage	20,000	
Freight	176	
Rents	14,167	
Repair/Service Office Equipment	10	
Engineering Services	274,807	
SAAS	6,915	
MMRS	7,867	
Audit Department	60,894	
State Personnel Board	7,941	
Temporary Employment Fees	3,112	
Fidelity Bonds	5,300	
Membership Dues	387	
Procurement Card Purchases	57	
Other Fees & Services	16,145	443,857
		<hr/>

**Information Technology:**

IS Professional Fees - Outside Vendor	564,517	
ITS Fees	16,730	
Service Fees to State Computer Center	291	
Software Acquisition	12,654	
IT Equipment Repairs	1,457	
Telephone Fees	16,235	
Long Distance	757	

**SUMMARY OF ADMINISTRATIVE EXPENSES**

Tires and Tubes - Auto	892	
Repairs to Motor Vehicles	8,913	
Electrical Supplies	73	
Batteries & Accessories for Vehicles	261	
Other Miscellaneous Expenses	33,120	
Procurement Card Purchases	2,003	98,495
		<hr/>
<b>Capital Outlay:</b>		
Automobiles	37,680	
Mainframe Systems Equipment	51,824	89,504
		<hr/>
<b>Total</b>		<u>4,349,154</u>

## OUT-OF-STATE TRAVEL TO CONVENTIONS AND MEETINGS

Employee's Name	Travel Destination	Travel Meeting Title	Total Amount
Bond, John Ferris Jr	Norfolk, Virginia	AASHTO National Civil Rights Symposium	\$ 1,190.00
Bond, John Ferris Jr	Baton Rouge, LA	Training and Information Update	\$ 291.00
Cooper, Kimberly Renee	Norfolk, Virginia	AASHTO National Civil Rights Symposium	\$ 1,324.00
Davis, Charles W	Little Rock, AR	SASHTO Annual Meeting	\$ 647.00
Dixon, Chris David	Little Rock, AR	SASHTO Annual Meeting	\$ 505.00
Henley, Travis Stanley	Gulf Shores, AL	Certification	\$ 638.00
Jordan, Daniel Gervis	Norfolk, Virginia	AASHTO National Civil Rights Symposium	\$ 1,349.00
Lazarou, Alexandrina	Washington, D.C.	AGA National Internal Controls Conference	\$ 1,488.00
Miller, J. Brooks SR	Santa Fe, NM	ATTENDING THE CONVENTION	\$ 1,721.00
Miller, J. Brooks SR	Atlanta, GA	ATTENDING MEETING	\$ 740.00
Mohr, Sanra Lynn	Norfolk, Virginia	AASHTO National Civil Rights Symposium	\$ 1,266.00
Stuart, Brandi Westbrook	Washington, D.C.	AGA National Internal Controls Conference	\$ 1,477.00
<b>GRAND TOTAL</b>			<u>\$ 12,636.00</u>

**AUTOMOBILE EXPENDITURES FOR STATE-OWNED VEHICLES**

<b>Make/Model</b>	<b>Year</b>	<b>Tag #</b>	<b>Cost</b>	<b>Cost of Use Estimate</b>	<b>Operating Expense</b>	<b>Total Expense</b>	<b>Miles Traveled</b>	<b>Cost per Mile</b>
Ford/Taurus	2005	G32905	\$ 12,396.00	\$ 201.28	\$ 129.09	\$ 2,809.57	2,368	\$ 1.19
Ford/Crown Victoria	2005	G32908	\$ 19,288.00	\$ 871.42	\$ 86.50	\$ 4,815.52	10,252	\$ 0.47
Chevrolet/Malibu	2007	G42494	\$ 14,990.00	\$ 1,698.73	\$ 116.20	\$ 4,812.93	19,985	\$ 0.24
Chevrolet/Impala	2008	G44301	\$ 15,800.00	\$ 1,365.87	\$ 79.75	\$ 4,605.62	16,069	\$ 0.29
Chevrolet/Impala	2008	G44302	\$ 15,800.00	\$ 2,013.99	\$ 198.83	\$ 5,372.82	23,694	\$ 0.23
Chevrolet/Impala	2009	G50967	\$ 16,679.00	\$ 2,626.08	\$ 89.89	\$ 6,051.77	30,895	\$ 0.20
Nissan/Titan	2009	G51350	\$ 23,756.00	\$ 678.30	\$ 133.96	\$ 5,563.46	7,980	\$ 0.70
Nissan/Titan	2009	G51349	\$ 23,756.00	\$ 859.01	\$ 273.93	\$ 5,884.14	10,106	\$ 0.58
Chevrolet/Impala	2010	G52757	\$ 17,291.00	\$ 2,818.86	\$ 216.78	\$ 6,493.84	33,163	\$ 0.20
Chevrolet/Impala	2010	G52756	\$ 17,291.00	\$ 1,969.28	\$ 221.77	\$ 5,649.25	23,168	\$ 0.24
Chevrolet/Impala	2010	G52758	\$ 17,291.00	\$ 4,186.17	\$ 270.42	\$ 7,914.79	49,249	\$ 0.16
Chevrolet/Impala	2011	G57409	\$ 17,291.00	\$ -	\$ -	\$ -	-	\$ -
Ford/F150	2011	G57577	\$ 20,389.00	\$ -	\$ -	\$ -	-	\$ -

## IMPROVEMENTS LET TO CONTRACT FROM JULY 1, 2010 THRU JUNE 30, 2011

County	Construction Miles and Cost						Reseal & Maintenance		
	Surfacing	Grading & Gravel	Bridges #	Bridges Miles	Resur- facing	Total Miles	Cost	Miles	Cost
Adams	1.249	0.620	-	-	-	1.869		22.693	-
Alcorn	5.231	-	7	0.228	-	5.459		46.218	-
Amite	1.609	-	3	0.232	41.678	43.519		-	-
Attala	0.723	0.195	9	0.316	34.486	35.720		67.646	-
Benton	2.977	0.091	5	0.392	-	3.460	1,644,350	0.036	-
Bolivar	0.132	0.164	2	0.063	-	0.359	795,800	40.859	-
Calhoun	-	0.231	2	0.035	-	0.266		12.943	-
Carroll	-	0.109	4	0.343	46.856	47.308	499,800	-	-
Chickasaw	4.977	0.036	2	0.117	-	5.130	1,114,700	16.627	-
Choctaw	0.100	0.163	3	0.123	-	0.386		52.882	112,400
Claiborne	1.636	-	-	-	5.180	6.816	1,485,991	22.698	-
Clarke	0.419	-	2	0.067	-	0.486		43.676	-
Clay	-	0.166	4	0.455	-	0.621		33.534	57,700
Coahoma	-	-	-	-	7.604	7.604	2,732,200	24.293	-
Copiah	0.199	0.376	6	0.621	41.730	42.926	262,000	-	-
Covington	0.956	0.237	5	0.150	3.910	5.253	3,605,200	23.995	-
DeSoto	0.738	-	3	0.033	3.965	4.736		7.029	-
Forrest	-	-	-	-	11.594	11.594		43.941	485,600
Franklin	4.197	0.417	3	0.340	-	4.954	781,100	41.088	-
George	0.400	0.089	2	0.038	-	0.527	1,208,800	-	-
Greene	-	-	2	0.164	18.989	19.153		0.318	546,800
Grenada	0.964	-	-	-	-	0.964		38.093	-
Hancock	-	-	1	0.123	28.432	28.555		6.550	965,600
Harrison	0.330	0.093	7	0.163	19.984	20.570	1,156,800	10.342	618,800
Hinds	0.694	0.128	8	0.437	17.678	18.937	5,677,004	89.588	817,200
Holmes	-	0.160	3	0.300	34.744	35.204	621,050	0.074	181,000
Humphreys	1.436	-	2	0.450	3.558	5.444	1,152,400	-	-
Issaquena	-	-	-	-	-	-		5.003	-
Itawamba	0.271	-	6	0.370	6.649	7.290	445,500	71.947	-
Jackson	-	-	1	0.031	-	0.031		11.805	2,239,700
Jasper	0.092	0.117	7	0.126	-	0.335		0.046	484,500
Jefferson	0.655	0.331	4	0.159	2.443	3.588	1,175,000	22.956	-
Jefferson Davis	0.399	-	2	0.060	-	0.459	591,200	55.177	-
Jones	0.296	-	3	0.358	10.106	10.760	495,500	161.074	-
Kemper	1.532	1.982	3	0.126	-	3.640		86.654	2,014,900
Lafayette	0.236	0.392	8	0.249	4.392	5.269		18.294	1,231,000
Lamar	0.184	-	2	0.095	-	0.279	596,800	6.381	-
Lauderdale	1.743	-	8	0.533	-	2.276	1,423,900	4.543	-
Lawrence	5.641	0.237	8	1.119	7.549	14.546	366,000	35.116	674,300
Leake	-	-	1	0.473	22.700	23.173	191,100	10.861	702,100
Lee	1.679	-	3	0.472	-	2.151		0.454	-
Leflore	-	-	-	-	2.940	2.940		50.830	-
Lincoln	10.631	0.145	2	0.039	1.335	12.150	607,900	46.743	1,467,700
Lowndes	-	0.525	2	0.047	0.470	1.042	708,100	86.867	-
Madison	0.474	-	1	0.037	5.147	5.658		8.022	2,388,200
Marion	2.159	0.238	1	0.045	-	2.442		0.179	1,279,100
Marshall	4.869	0.073	3	0.073	2.451	7.466	1,004,100	38.309	-
Monroe	0.920	0.079	2	0.164	10.945	12.108	3,603,300	45.667	-
Montgomery	-	0.391	3	0.079	-	0.470		6.567	-
Neshoba	3.078	-	4	0.124	-	3.202	398,900	55.328	-
Newton	0.250	-	1	0.031	-	0.281	629,500	25.046	973,100
Noxubee	-	0.110	1	0.026	-	0.136		47.010	-
Oktibbeha	2.929	-	-	-	9.509	12.438	380,500	50.764	2,003,190

## IMPROVEMENTS LET TO CONTRACT FROM JULY 1, 2010 THRU JUNE 30, 2011

County	Construction Miles and Cost						Reseal & Maintenance		
	Surfacing	Grading & Gravel	Bridges #	Bridges Miles	Resur- facing	Total Miles	Cost	Miles	Cost
Panola	0.320	0.174	8	0.639	2.524	3.657	425,700	60.025	-
Pearl River	0.874	0.033	9	0.330	5.109	6.346		93.495	-
Perry	2.892	0.070	4	0.148	-	3.110	2,182,700	34.691	1,773,900
Pike	1.484	-	4	0.450	-	1.934		75.215	-
Pontotoc	1.254	0.651	3	0.106	-	2.011	1,380,800	11.847	-
Prentiss	0.902	-	5	0.189	7.096	8.187		-	-
Quitman	0.546	0.030	1	0.017	9.151	9.744	1,704,600	-	-
Rankin	6.297	-	-	-	41.625	47.922	3,783,700	-	-
Scott	0.196	0.612	4	0.753	-	1.561		38.588	110,000
Sharkey	-	0.151	1	0.018	3.854	4.023	452,400	2.291	-
Simpson	-	0.245	3	0.292	1.865	2.402		28.371	-
Smith	1.359	0.272	5	0.065	-	1.696		0.066	-
Stone	1.928	-	2	0.034	7.263	9.225	1,524,800	22.166	294,800
Sunflower	3.587	-	2	0.198	-	3.785		23.024	-
Tallahatchie	5.946	-	2	0.228	3.650	9.824	199,400	3.017	-
Tate	-	0.145	6	0.244	-	0.389		3.297	-
Tippah	1.567	0.118	4	0.403	-	2.088	614,800	33.310	-
Tishomingo	0.032	0.030	4	0.040	3.050	3.152	806,100	42.149	176,600
Tunica	-	-	1	0.042	-	0.042		9.221	-
Union	-	-	1	0.126	-	0.126		64.214	-
Walthall	-	0.054	3	0.344	59.710	60.108	384,000	59.302	-
Warren	2.975	-	5	0.633	-	3.608	2,379,400	4.104	-
Washington	0.497	0.107	5	0.407	8.999	10.010	2,484,200	-	-
Wayne	0.087	-	-	-	67.704	67.791		-	-
Webster	0.278	0.333	6	0.254	-	0.865		-	-
Wilkinson	-	0.480	3	0.193	-	0.673		49.917	701,300
Winston	6.859	-	5	0.185	4.066	11.110	1,616,200	59.516	-
Yalobusha	0.284	0.081	4	0.389	-	0.754	324,400	35.563	-
Yazoo	-	-	1	0.093	-	0.093		100.530	1,590,700
Statewide	-	-	-	-	-	-	-	-	-
Totals	107.169	11.481	262	16.846	632.690	768.186	55,617,695	2,450.685	23,890,190



**IMPROVEMENTS MADE ON THE STATE AID SYSTEM FROM JUNE 30, 1950, THRU JUNE 30, 2011**

County	State Aid Mileage			State Aid Improvements							Funds Expended or Obligated	
	Total Allocation	Actually Designated	Paved Mileage	Grading & Grav. Surf.	Brs. Structural #	Miles	Total Actual Miles	Overlay or Resurf.	Total Construction	Surfacing Reseal/Maint.	To Contact	
											Construction	Reseal/Mant.
Adams	244.42	187.2	48.436	1.362	19	0.604	50.402	37.698	88.100	120.163	26,595,092	2,952,756
Alcorn	280.16	185.1	117.431	1.788	55	1.185	120.404	27.107	147.511	309.050	36,146,987	8,636,121
Amite	398.65	253.15	191.114	3.889	54	1.571	196.574	96.894	293.468	584.328	45,753,347	7,876,245
Attala	345.03	250.85	145.107	8.902	71	1.836	155.845	34.486	190.331	602.856	44,753,156	7,931,898
Benton	205.57	167	105.002	9.655	37	1.001	115.658	-	115.658	171.104	24,876,479	2,825,702
Bolivar	339.41	202.7	101.483	7.281	48	0.937	109.701	80.137	189.838	248.346	38,414,362	7,134,849
Calhoun	321.72	235.3	129.197	15.969	93	1.667	146.833	47.753	194.586	469.022	43,322,955	6,562,283
Carroll	300.74	204.35	110.090	13.134	71	1.884	125.108	92.912	218.020	300.827	42,384,638	7,365,112
Chickasaw	247.19	195.88	109.947	15.389	67	1.434	126.770	0.463	127.233	324.289	30,638,456	5,873,093
Choctaw	235.68	199.7	111.873	30.632	86	1.598	144.103	0.225	144.328	380.416	30,617,340	7,721,706
Claiborne	240.12	154.5	94.272	10.000	25	1.202	105.474	91.931	197.405	244.529	33,010,821	6,513,477
Clarke	370.67	291	206.434	0.862	56	1.586	208.882	32.970	241.852	713.510	42,183,851	10,555,958
Clay	223.9	168	96.968	9.891	68	1.958	108.817	30.530	139.347	311.478	40,856,955	7,462,347
Coahoma	340.37	216.1	151.098	1.345	27	0.793	153.236	167.866	321.102	366.866	34,935,397	5,084,101
Copiah	442.94	387.7	240.538	4.791	112	3.275	248.604	65.035	313.639	645.405	62,929,511	10,616,275
Covington	289.12	223.8	147.143	2.581	78	2.478	152.202	13.904	166.106	584.911	34,784,460	7,976,451
DeSoto	345.17	197.4	100.545	20.603	51	0.981	122.129	29.826	151.955	168.385	43,173,027	8,504,275
Forrest	319.89	261.2	63.807	5.608	70	2.105	71.520	85.944	157.464	354.508	35,306,134	9,338,005
Franklin	398.65	225.88	162.772	1.397	42	1.936	166.105	37.215	203.320	453.142	42,514,727	8,775,854
George	258.73	177.3	124.349	5.299	49	1.151	130.799	11.302	142.101	293.555	29,848,776	7,352,387
Greene	412.64	290.3	207.278	9.549	92	2.251	219.078	58.250	277.328	454.523	46,956,602	6,761,280
Grenada	214.27	165.28	102.065	1.914	31	0.740	104.719	25.741	130.460	433.060	40,708,679	7,089,914
Hancock	251.92	163.2	96.943	10.139	42	0.798	107.880	48.833	156.713	189.897	46,134,278	7,091,216
Harrison	414.63	267.7	134.052	1.964	54	2.047	138.063	42.171	180.234	391.413	56,213,883	8,834,610
Hinds	440.95	359	248.216	1.632	44	1.721	251.569	105.198	356.767	331.789	57,637,638	8,915,129
Holmes	445.27	322.4	222.485	18.541	63	1.710	242.736	100.767	343.503	679.125	49,140,499	11,426,224
Humphreys	223.26	204.9	112.453	16.225	34	1.026	129.704	10.701	140.405	253.435	24,985,605	6,378,169
Issaquena	128.89	91.1	36.131	21.852	7	0.161	58.144	28.007	86.151	105.077	11,536,601	4,734,432
Itawamba	326.98	222.35	161.222	6.298	85	2.063	169.583	20.088	189.671	403.828	47,551,889	6,732,968
Jackson	351.66	146.3	60.193	6.723	29	1.409	68.325	7.893	76.218	99.795	36,976,650	7,687,410
Jasper	307.73	291.4	172.709	4.395	81	1.976	179.080	26.025	205.105	387.182	37,726,823	6,713,250
Jefferson	221.47	188.8	75.461	6.676	48	1.207	83.344	23.699	107.043	298.948	25,865,625	7,772,577

IMPROVEMENTS MADE ON THE STATE AID SYSTEM FROM JUNE 30, 1950, THRU JUNE 30, 2011

County	State Aid Mileage			State Aid Improvements							Funds Expended or Obligated	
	Total Allocation	Actually Designated	Paved Mileage	Grading & Grav. Surf.	Brs. Structural		Total Actual Miles	Overlay or Resurf.	Total Construction	Surfacing Reseal/Maint.	To Contact	
					#	Miles					Construction	Reseal/Mant.
Jefferson Davis	251.58	162.83	113.174	3.829	56	1.293	118.296	46.067	164.363	415.071	28,173,749	7,229,708
Jones	502.2	329.3	178.889	30.507	79	2.616	212.012	59.545	271.557	683.398	52,135,067	11,498,789
Kemper	382.33	288.35	206.748	32.665	88	1.682	241.095	29.968	271.063	447.422	48,431,620	6,956,048
Lafayette	341.95	184.7	108.252	8.802	105	2.126	119.180	35.438	154.618	353.727	44,616,039	7,383,853
Lamar	318.1	207.78	110.488	1.474	52	1.601	113.563	87.450	201.013	483.832	35,008,042	10,011,740
Lauderdale	439.39	412.3	248.661	1.619	69	1.840	252.120	96.368	348.488	466.253	49,070,319	8,459,098
Lawrence	261.1	207.72	125.901	8.414	66	2.526	136.841	73.548	210.389	434.942	59,609,594	7,092,971
Leake	296.54	223.33	146.788	11.073	61	1.928	159.789	38.697	198.486	343.878	38,275,817	6,597,869
Lee	343.24	194.4	109.494	17.876	74	1.912	129.282	19.648	148.930	357.368	51,462,131	11,423,646
Leflore	311.14	275.9	134.409	5.456	59	2.585	142.450	9.928	152.378	572.890	42,999,177	10,419,670
Lincoln	433.62	358.8	208.446	4.654	71	1.896	214.996	32.931	247.927	585.810	67,604,673	9,701,452
Lowndes	334.88	189	112.242	7.491	62	1.372	121.105	119.007	240.112	377.376	41,742,108	7,793,687
Madison	369.85	285.3	154.919	3.352	56	1.390	159.661	57.271	216.932	429.229	39,252,387	7,910,239
Marion	331.94	287.6	185.490	4.076	63	1.271	190.837	92.845	283.682	607.402	38,273,947	9,218,672
Marshall	315.61	211	120.757	8.504	43	1.555	130.816	13.985	144.801	218.122	46,955,259	5,613,138
Monroe	328.95	203.7	143.269	7.533	47	1.068	151.870	37.745	189.615	402.509	39,793,513	8,171,323
Montgomery	251.78	210.85	89.916	24.614	83	1.588	116.118	10.429	126.547	286.341	32,407,241	7,954,554
Neshoba	377.67	312.2	185.980	34.354	91	1.638	221.972	9.884	231.856	399.864	45,527,434	7,200,892
Newton	296.86	273	170.641	6.404	68	1.079	178.124	12.234	190.358	343.643	34,486,622	5,711,748
Noxubee	317.05	222	127.970	6.607	57	1.151	135.728	19.013	154.741	379.604	37,300,354	5,895,890
Oktibbeha	285.13	202.4	134.308	10.305	24	0.411	145.024	30.737	175.761	458.912	33,849,018	5,235,287
Panola	380.4	250.4	157.748	6.586	62	1.813	166.147	116.497	282.644	472.415	45,681,788	6,085,567
Pearl River	410.01	242	146.860	14.310	68	2.114	163.284	49.026	212.310	627.117	47,191,068	11,043,120
Perry	286.75	223.8	90.612	6.110	66	1.611	98.333	32.700	131.033	442.908	36,011,516	8,041,906
Pike	338.5	257.1	133.282	15.512	61	1.716	150.510	7.637	158.147	522.436	42,284,149	10,744,638
Pontotoc	267.15	180.09	99.297	10.876	27	0.669	110.842	4.712	115.554	243.738	31,749,386	8,246,626
Prentiss	281.65	198.52	123.957	20.356	72	1.534	145.847	29.588	175.435	235.924	39,833,983	6,032,754
Quitman	217.38	184.6	86.600	6.268	50	1.363	94.231	33.643	127.874	133.779	24,173,843	3,466,694
Rankin	541.49	270.2	143.255	10.242	81	1.523	155.020	133.792	288.812	284.887	68,376,954	9,143,163
Scott	310.55	223.3	135.873	15.732	88	1.972	153.577	11.786	165.363	397.764	34,813,790	8,734,432
Sharkey	164.28	111.6	73.556	14.543	16	0.486	88.585	40.846	129.431	164.447	18,826,699	4,998,596
Simpson	348.73	286.75	171.519	4.117	81	2.319	177.955	22.061	200.016	513.837	48,042,809	7,393,303

IMPROVEMENTS MADE ON THE STATE AID SYSTEM FROM JUNE 30, 1950, THRU JUNE 30, 2011

County	State Aid Mileage		State Aid Improvements										Funds Expended or Obligated To Contact	
	Total Allocation	Actually Designated	Paved Mileage	Grading & Grav. Surf.	Brs. Structural #	Miles	Total Actual Miles	Overlay or Resurf.	Total Construction	Surfacing Reseal/Maint.	Construction	Reseal/Mant.	To Contact	
													Construction	Reseal/Mant.
Smith	321.72	260	184.169	10.899	71	1.881	196.949	14.211	211.160	473.399	41,045,116	6,798,492		
Stone	223.6	181.9	127.397	2.088	35	0.685	130.170	50.856	181.026	317.735	26,286,741	4,650,460		
Sunflower	412.64	249.8	141.429	22.194	53	1.758	165.381	55.264	220.645	259,245	44,940,701	6,740,558		
Tallahatchie	296.07	289.43	146.786	21.900	42	1.523	170.209	26.991	197.200	463,680	36,536,913	7,588,635		
Tate	244.16	164.8	51.274	17.563	64	1.918	70.755	25.072	95.827	162,211	28,019,016	4,894,706		
Tippah	290.95	217.3	139.723	13.772	54	1.192	154.687	9.368	164.055	272,038	39,568,242	4,272,669		
Tishomingo	263.67	205	122.578	4.137	59	1.215	127.930	66.023	193.953	191,616	33,586,115	7,852,019		
Tunica	242.45	204.2	139.189	12.521	79	0.624	152.334	92.584	244.918	203,571	24,908,921	5,884,191		
Union	277.64	188.1	107.103	16.112	47	1.133	124.348	17.358	141.706	234,215	35,890,902	5,363,487		
Walshall	274.85	218.86	126.857	3.183	71	1.669	131.709	87.873	219.582	538,912	33,621,441	11,012,229		
Warren	284.23	193.2	70.738	8.015	34	1.395	80.148	47.143	127.291	232,245	31,946,222	4,910,456		
Washington	377.67	359.5	78.305	0.606	59	2.095	81.006	81.520	162.526	105,026	45,895,818	5,186,288		
Wayne	410.31	372.1	221.267	11.439	70	1.736	234.442	76.001	310.443	632,384	45,192,877	11,940,471		
Webster	277.42	205.5	107.201	7.596	81	1.471	116.268	5.187	121.455	532,608	37,368,646	7,778,285		
Wilkinson	223.8	152.9	95.054	2.116	32	1.012	98.182	39.793	137.975	324,112	29,328,478	5,755,472		
Winston	296.54	280.55	205.043	34.845	67	1.309	241.197	27.159	268.356	324,493	37,087,318	3,778,392		
Yalobusha	212.75	176.7	226.456	1.365	49	1.207	229.028	-	229.028	504,792	26,570,079	6,839,234		
Yazoo	400.98	317.8	211.406	11.465	38	1.561	224.432	104.119	328.551	907,759	45,250,626	10,897,162		
Totals	25,857.04	19,005.30	11,168,090	842,363	4,840	125.323	12,135,776	3,723.119	15,858,895	31,441,648	3,231,485,509	610,750,357		

STATE AID PROGRAM CONSTRUCTION AND ENGINEERING DISBURSEMENTS BY COUNTY AND SYSTEM FROM JULY 1, 2009 THRU JUNE 30, 2011

COUNTY	RR CROSSING	MDOT	HIGH RISK	RURAL	ACCESS	APPALACHIAN	PUBLIC	DEFENSE	EMERGENCY	CONGESTION	LOCAL	STATE AID	SURFACE	BRIDGE	TOTALS
	RRS/STP-C RRP/STP-S	HIGH PRIORITY MS	RURAL ROAD PROGRAM	SECONDARY GRADE RSG/STPG	HIGHWAY LAKES AHL	ACCESS HIGHWAY APL	LAND HIGHWAYS EFL/PLH	AGMC	RELIEF	RELIEF	ROAD PROJECTS	System SAP	System SAP	TRANSPORTATION RURAL COUNTIES	BR System
Adams	01 & 02	19	25	32	34	36	62 & 63	64	66	68	80	81	82 & 46	85	118,862
Alcorn												118,862			35,136
Amite												1,758,959			2,000
Atala		218,373										0			72,527
Benton		105,493					20,415					76,576			341,663
Bolivar												0			106,482
Calhoun												702,420			211,974
Carroll		256,075										598,041			799,648
Chickasaw						5,734	1,733					59,672		2,454	854,116
Choctaw							179,150					63,507			242,657
Claborne		5,300										187,171	26,317		218,787
Clarke												206,665			206,665
Clay												3,500	700		37,512
Coahoma		215,558	750									1,760,993		13,860	1,991,161
Copiah		25,331	20,554									1,890,844		129,133	2,065,863
Covington			1,072,545									4,947	210,823		1,990,496
DeSoto		258,362										466,539			259,460
Forrest												32,047		1,316	467,855
Franklin							45,474								77,520
George											54,883	1,794,095		321,420	2,170,398
Greene												1,623,801	31,303		1,655,104
Grenada		165,445										363,698	439,036		968,178
Hancock							3,154		57,408			1,073,980	25,542		1,156,929
Harrison									215,336			644,361	431,976		1,294,827
Hinds		1,585,250	102,478									1,280,029	499,777		3,467,534
Holmes		442,817										2,606,401			4,551,897
Humphreys		384,303											689,233	364,046	1,437,581
Issaquena															0
Ittawamba				365,960											376,743
Jackson		15,913										726,590	19,742		1,489,035
Jasper												92,021			107,934
Jefferson		726,431										1,094,077		972	1,095,049
Jeff Davis													907	1,018,339	1,744,771
Jones				37,543										67,451	68,358
Kemper															37,543
Lafayette			650								415,392	99,733		164,165	679,290
Lamar											11,654	1,020,866		60,419	1,093,588
Lauderdale									10,207			1,119,295		523,285	1,642,579
Lawrence		141,671										299,247	1,013,869		1,323,323
Leake		173,337										720,972		325,620	1,188,263
Lee						111,881						557,638		904,027	1,655,002
Leflore		17,901					458,773					560,890			672,771
Lincoln		1,790,453										197,015			673,689
Lowndes			16,309			20,958						1,206,343	606,325	11,991	3,617,111
Madison												93,417	652,985	562,083	1,345,753
Marion												436,635			436,635
Marshall		1,515,443	232,121			888,806						1,082,846		2,778	1,085,624
												258			2,668,905

STATE AID PROGRAM CONSTRUCTION AND ENGINEERING DISBURSEMENTS BY COUNTY AND SYSTEM FROM JULY 1, 2009 THRU JUNE 30, 2011

COUNTY	RR CROSSING	MDOT	HIGH RISK	RURAL	ACCESS	APPALACHIAN	PUBLIC	DEFENSE	EMERGENCY	CONGESTION	LOCAL	STATE AID	SURFACE	BRIDGE	TOTALS
	RRS/STP-C RRP/STP-S System 01 & 02	HIGH PRIORITY MS System 19	RURAL ROAD PROGRAM System 25	SECONDARY GRADE RSG/STPG System 32	HIGHWAY LAKES AHL System 34	ACCESS HIGHWAY APL System 36	LAND HIGHWAYS EFL/PLH System 62 & 63	ACCESS AGMC System 64	RELIEF RELIEF System 66	RELIEF RELIEF System 68	SYSTEM ROAD PROJECTS System 80	PROJECTS SAP System 81	TRANSPORTATION RURAL COUNTIES STP System 82 & 46	REPLACEMENT BR System 85	BY COUNTY
Monroe												238,832		266,531	505,363
Montgomery												622,049		117,710	739,759
Neshoba												335,460	48,502	187,760	571,722
Newton												989,792			989,792
Noxubee														104	104
Okribbeha		785,164										252,572	1,160,218	2,263	2,200,217
Panola		74,021										323,882		292,911	690,814
Pearl River		780,390	8,693									250,919	492,346	2,120	1,534,468
Perry		68,707					686,468					1,446,769		996,093	3,198,038
Pike			435,030										104,279	270	539,580
Pontotoc						240,081						53,080		72,579	365,740
Premitts												1,135,854			1,135,854
Quitman		16,177													16,177
Rankin		78,459										4,306,038			4,384,497
Scott												730,303		111,272	841,575
Sharkey							322,732					5,528			328,260
Simpson		160,875	69,367									31,565	192	25,274	287,273
Smith			1,704				196,329					1,311,616		31,130	1,540,779
Stone			210,618	1,200								84,342		1,200	297,360
Sunflower												1,233,417		288,767	1,522,184
Tallahatchie		191,657										113,150	196,414		501,221
Tate											175	30,318	850	8,535	39,878
Tippah												937,917	1,075	155,179	1,094,171
Tishomingo												743,569	25,602		769,171
Tunica														12,130	12,130
Union												175			175
Walhall												479,181		373,601	852,782
Warren												635,523	157,191		792,714
Washington		537,989										197,002		136,472	871,463
Wayne							7,714					845,766	1,278,709	15,235	2,147,423
Webster						618						2,721	157,857	29,107	190,303
Wilkinson											311,110	409,803	42,347	763,260	
Winston							323,887					7,458	314,773	300,955	947,074
Yalobusha												337,402	13,309	24,407	375,118
Yazoo												1,675,775			1,675,775
Service Center *												98,388			98,388
Statewide **														2,593,591	2,593,591
TOTALS BY SYS	0.00	10,736,895	2,170,819	404,703		1,268,078	2,245,830	0	282,950	0	793,214	46,526,256	8,601,848	13,829,088	86,859,682

\* System 81, Testing Charges paid to Calvert on SAP 99 99 and to Burns & Cooley on SAP 99 100

\*\* System 82, Wetland Mitigation; System 85, Bridge Inspection and Bridge Posting Projects

**LOCAL SYSTEM BRIDGE PROGRAM CONSTRUCTION AND ENGINEERING DISBURSEMENTS  
BY COUNTY AND SYSTEM FROM JULY 1, 2010 THRU JUNE 30, 2011**

COUNTY	LOCAL SYSTEM ROAD PROJECTS	LOCAL SYSTEM BRIDGE PROJECTS	TOTALS BY COUNTY
	System 80	System 81	
Adams		127,819	127,819
Alcorn		295,596	295,596
Amite		191,377	191,377
Attala		267,646	267,646
Benton		188,937	188,937
Bolivar		267,121	267,121
Calhoun		389,409	389,409
Carroll		740,320	740,320
Chickasaw		20,414	20,414
Choctaw		202,209	202,209
Claiborne		45,152	45,152
Clarke		0	0
Clay		150,289	150,289
Coahoma	99,530	0	99,530
Copiah		442,606	442,606
Covington		239,732	239,732
DeSoto	548,540	0	548,540
Forrest		378,996	378,996
Franklin		49,307	49,307
George		279,115	279,115
Greene		14,904	14,904
Grenada	190,955		190,955
Hancock		40,903	40,903
Harrison		900,530	900,530
Hinds		1,132,609	1,132,609
Holmes		568,923	568,923
Humphreys		94,844	94,844
Issaquena		0	0
Itawamba		524,954	524,954

**LOCAL SYSTEM BRIDGE PROGRAM CONSTRUCTION AND ENGINEERING DISBURSEMENTS  
BY COUNTY AND SYSTEM FROM JULY 1, 2010 THRU JUNE 30, 2011**

COUNTY	LOCAL SYSTEM ROAD PROJECTS	LOCAL SYSTEM BRIDGE PROJECTS	TOTALS BY COUNTY
	System 80	System 81	
Lawrence		621,175	621,175
Leake		261,163	261,163
Lee		502,883	502,883
Leflore		0	0
Lincoln		374,877	374,877
Lowndes		553,184	553,184
Madison		13,333	13,333
Marion		638,343	638,343
Marshall		71,935	71,935
Monroe		490,028	490,028
Montgomery		86,072	86,072
Neshoba		27,429	27,429
Newton		432,609	432,609
Noxubee		285	285
Oktibbeha		95,763	95,763
Panola		341,330	341,330
Pearl River		825,382	825,382
Perry		285,065	285,065
Pike		171,437	171,437
Pontotoc		479,430	479,430
Prentiss		397,387	397,387
Quitman		43,892	43,892
Rankin	0	0	0
Scott		0	0
Sharkey		0	0
Simpson		319,960	319,960
Smith		1,068,775	1,068,775
Stone		265,265	265,265
Sunflower		360,812	360,812
Tallahatchie		267,874	267,874
Tate		181,357	181,357
Tippah		733,195	733,195
Tishomingo		347,589	347,589
Tunica	215,240	103,402	318,642
Union		332,191	332,191
Walthall		752,207	752,207
Warren		144,729	144,729
Washington		941,064	941,064

**LOCAL SYSTEM BRIDGE PROGRAM CONSTRUCTION AND ENGINEERING DISBURSEMENTS  
BY COUNTY AND SYSTEM FROM JULY 1, 2010 THRU JUNE 30, 2011**

COUNTY	LOCAL SYSTEM ROAD PROJECTS	LOCAL SYSTEM BRIDGE PROJECTS	TOTALS BY COUNTY
	System 80	System 81	
Wayne		0	0
Webster		813,088	813,088
Wilkinson		593,610	593,610
Winston		36,283	36,283
Yalabusha		39,011	39,011
Yazoo		55,548	55,548
<b>TOTALS BY SYSTEM</b>	1,054,264	25,053,748	26,108,012



This page intentionally left blank.