



**OFFICE OF
STATE AID ROAD CONSTRUCTION**

MISSISSIPPI DEPARTMENT OF TRANSPORTATION
P. O. BOX 1850
JACKSON, MISSISSIPPI 39215-1850

H. Carey Webb, P.E.
State Aid Engineer
Tele 601-359-7150
www.osarc.state.ms.us

412 Woodrow Wilson Ave.
Jackson, Mississippi 39216
Fax 601-359-7141
mail@osarc.state.ms.us

October 5, 2012

The Honorable Phil Bryant, Governor, and
Members of the Mississippi Legislature

Ladies and Gentlemen:

RE: Annual Report, Office of State Aid Road Construction
Fiscal Year July 1, 2011 thru June 30, 2012

Please accept this letter as notification that the Office of State Aid Road Construction has posted our Fiscal Year 2012 Annual Report on our website. The Office of State Aid Road Construction did not print the Annual Report, but placed it on our website for convenient access. The State Aid Engineer respectfully submits this Annual Report of the Operations of the Office of State Aid Road Construction for Fiscal Year 2012.

Included in the report are operation summaries of the past fiscal year, together with a brief summary of the overall background and functions of the office at the state and county levels. We hope that this information will be of interest and help to the Governor and all members of the Legislature, as well as other individuals concerned with the Office of State Aid Road Construction.

During Fiscal Year 2012, the counties awarded \$79,205,413 in construction contracts. This was comprised of \$30,117,125 for State Aid (SAP) projects, \$31,590,300 for Federal Aid projects [which included \$11,577,194 for Bridge Replacement (BR) projects] and \$17,497,988 for Local System Bridge Program (LSBP) projects.

The State Aid Program continues to contribute to the construction and maintenance of roads and bridges in all counties of the state. Many employment opportunities are provided during the actual construction of State Aid projects.

You may access our FY 2012 Annual Report via our agency website at www.msstateaidroads.us, click on "About State Aid" in the left column, scroll down to the bottom of the page and click on "Fiscal Year 2012 Annual Report" or you may type the following link in your address bar http://www.msstateaidroads.us/downloads/Public/Office_of_State_Aid_Road_Construction-FY_2012_Annual_Report.pdf

If you would like to receive a printed copy of the report please contact Brandi Stuart at 601-359-7133 or by email at bstuart@osarc.state.ms.us.

Your recommendations and continued support of the Office of State Aid Road Construction are greatly appreciated.

Sincerely,

H. Carey Webb, P.E.
State Aid Engineer

HCW:bws

**OFFICE OF STATE AID
ROAD CONSTRUCTION**



**Annual Report
Fiscal Year 2012**

OFFICE OF STATE AID ROAD CONSTRUCTION

SUMMARY ANNUAL REPORT

FOR

THE FISCAL YEAR JULY 1, 2011 TO JUNE 30, 2012

TOGETHER WITH

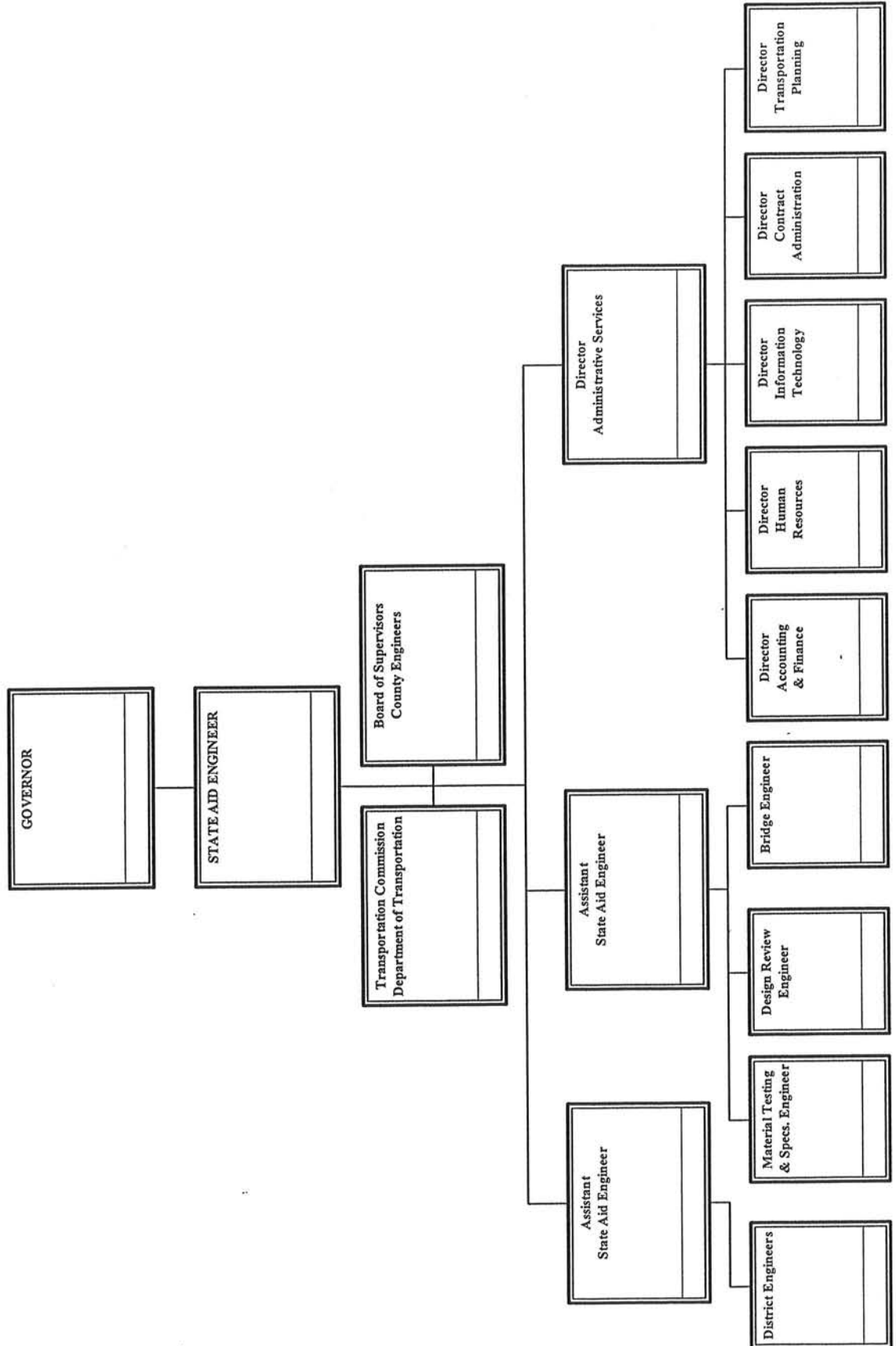
A PROGRESS REPORT FROM THE BEGINNING OF THE

PROGRAM (MAY, 1950) TO JUNE 30, 2012

TABLE OF CONTENTS

	<u>Page</u>
Organizational Chart	1
State Aid Road Program:	
Background of Program	2
Organization of Program	3
Operation of Program	4
Type or Character of Construction and Reseal Programs	5
Progress of Program	6
Revenue Sources and Amounts	11
Receipts and Disbursements	13
Funding Summary	14
Summary of Administrative Expenses	15
Out-of-State Travel to Conventions and Meetings	17
Automobile Expenditures for State-Owned Vehicles	18
Improvements Let to Contract from July 1, 2011 thru June 30, 2012	19
Improvements Made on State Aid System from June, 1950, thru June 30, 2012	21
State Aid Program Construction and Engineering Disbursements from July 1, 2011 thru June 30, 2012	25
Local System Bridge Program Construction and Engineering Disbursements from July 1, 2011, thru June 30, 2012	26

OFFICE OF STATE AID ROAD CONSTRUCTION
 ORGANIZATION CHART
 Fiscal Year 2012
 Annual Report



THE STATE AID ROAD PROGRAM

This report primarily summarizes the operations and progress of the State Aid Program for the fiscal year July 1, 2011 to June 30, 2012.

It is considered appropriate, however, to include an overall background of the program covering the enabling legislation, organization and functions at the State Aid Office and county levels, total funds expended, and total construction improvements accomplished.

An estimate of the program volume anticipated for the fiscal year July 1, 2012 to June 30, 2013 is also included in the report.

BACKGROUND OF PROGRAM

The State Aid Program had its beginning with the passage of Chapter 6, Laws of the Extraordinary Session of 1949 (Section 65-9-[1-33] of the Mississippi Code of 1972). This legislation provided for the creation of a division within the State Highway Department, to be known as the Division of State Aid Road Construction, and to be charged with the responsibility of administering the program at the state level. The 1992 Legislature passed Senate Bill 2763 which created the Mississippi Department of Transportation. Under this bill the State Highway Department became known as the Department of Transportation and the Division of State Aid Road Construction became known as the Office of State Aid Road Construction.

The Enabling Act also provided for a State Aid System, to be composed of the principal collector and distributor routes in the 82 counties, connecting with the State Highway System and other principal county roads to form a network of secondary roads for the state. This system was originally limited to 11,656.4 miles, with each county allocated a percentage of this eligible mileage. The State Legislature at its 1962 Regular Session increased the eligible system mileage to 23,312.8 miles. No change was made in the allocation percentages. In 1994, under House Bill 1302, the allocation percentages were revised and the eligible mileage was increased to 25,857.04 miles. There are 19,025.06 miles actually designated by the Boards and approved by the State Aid Engineer as of June 30, 2012.

The 1994 Regular Session of the Legislature passed House Bill 1302 which included the establishment of a Local System Bridge Replacement and Rehabilitation Program (LSBP), (Section 65-37[1-15] of the Mississippi Code of 1972). The program provides funding for replacement and rehabilitation of deficient bridges maintained by counties or municipalities excluding bridges on the State Aid System, the municipal urban system or the rural major collector system. The Office of State Aid Road Construction is charged with the responsibility of administering the LSBP program under rules and regulations promulgated by the State Aid Engineer.

The 2001 Regular Session of the Legislature passed Senate Bill No. 2318 which established the Local System Road Program (LSRP), (Section 65-18[1-17] of the Mississippi Code of 1972). The program gives the counties the ability to use LSBP and State Aid funds (subject to certain criteria) for the construction, reconstruction and paving of county roads not on the State Aid Road System.

ORGANIZATION OF PROGRAM

Organization of the State Aid Office

The State Aid Enabling Act provides that the Office of State Aid Road Construction be directed by a State Aid Engineer, who is appointed by the Governor for terms of four years each (as amended by the Legislature in 1985). It further provides that the State Aid Engineer hire assistant engineers and other employees necessary to carry out the duties and responsibilities set out in the enabling legislation.

The actual organization of the office began with the appointment of the first State Aid Engineer on May 11, 1950. The office was authorized in 2012 to have an organization for a staff of fifty-five (55) full-time employees, including fifteen (15) Registered Professional Engineers. All positions are approved by the Department of Finance and Administration and the State Personnel Board.

Organization at the County Level

Each Board of Supervisors, as the governing agency of the county, is required by statute to appoint a County Engineer, who is a Registered Professional Engineer, to act for and on behalf of the Board and to administer the engineering functions at the county level, subject to the rules and regulations promulgated by the State Aid Engineer.

The Board is also required to appoint a Local System Bridge Engineer to administer the LSBP program at the county level. The duties of the LSBP Engineer parallel those of the County Engineer and the Board may elect to appoint the County Engineer as the LSBP Engineer.

OPERATION OF THE PROGRAM

Operation of the Program at the County Level

It is the responsibility of the Board of Supervisors to designate the roads to be included in the county's State Aid System; adopt annual construction programs; acquire rights-of-way for State Aid projects; advertise for bids; award contracts; and maintain completed projects after construction.

The County Engineers' responsibilities and duties include, but are not limited to, the following: Assist the Boards of Supervisors in the designation and modification of their State Aid Systems; prepare annual construction programs; make surveys and prepare detailed plans and designs; make field inspections with the State Aid Engineer's representatives; prepare proposals for advertisement for bids; attend lettings at the county level; provide engineering controls (staking, etc.); supervise and inspect construction; prepare estimates for payment to the contractors; and make annual maintenance inspections of completed projects.

Operation of the Program at the State Level

It is the responsibility of the State Aid Engineer and his staff to prepare and adopt uniform design standards and specifications for the construction and maintenance of State Aid projects; approve all additions to the State Aid System; approve all construction programs, plans and specifications; authorize advertisement for bids; concur in the award of the contracts; approve and disburse all payments made from the project fund; approve the final acceptance of completed projects; and make annual and other periodic inspections of completed projects to see that they are properly maintained by the respective Boards of Supervisors.

TYPE OR CHARACTER OF CONSTRUCTION AND RESEAL PROGRAMS

Construction

During the early years of the program (the 1950's), many counties had a great need for bridges and graded roadways with a gravel surface, although many other counties began their State Aid Programs with the construction of hard-surfaced (blacktop) improvements.

It has been the objective throughout the program to construct roads that would connect with the State Highway System and other State Aid routes to form a network of secondary roads. At the present time, all programs now being approved provide for the future completion of a hard-surfaced facility.

The first hard-surfaced State Aid roads, which were completed in the beginning of the program, now need asphalt overlays. It will be noted from the summaries to follow in this report that a total of 3,757.15 miles of hot mix asphalt overlay construction (some surfaces were widened) has been accomplished. This points to the fact that the principal or arterial State Aid roads must now be upgraded to meet increasing traffic volumes and heavier loads. It is anticipated that the need for these betterments on the principal routes will continue to increase.

Maintenance and Reseal Work

The original State Aid Act did not permit the use of State Aid funds for the reseal of existing bituminous surfaces, which work consists of a light application of liquid asphalt and a light application of a fine or seal aggregate to cover the asphalt. Reseal work is regarded as maintenance. The Legislature, during its 1962 Session, amended the law to permit the use of State Aid funds (not to exceed 10%) to reseal hard-surfaced roads which had been constructed through the use of State Aid Funds. This 10% limitation was eliminated during the 1982 Legislative Session.

Bituminous surface treatments need to be resealed on an average of every five or six years to protect the surfaces and the investments made therein. A total of 31,846.76 miles have been resealed, with 2,611.21 miles of this total being contracted during the 2012 fiscal year.

The Legislature, during the 1982 Regular Session, amended Section 65-9-25 of the Mississippi Code of 1972 to permit additional State Aid funds to be used for maintenance, repair and reconstruction of State Aid roads which have been constructed in accordance with State Aid standards and specifications.

PROGRESS OF PROGRAM

Projects Placed Under Contract from July 1, 2011 thru June 30, 2012

	<u>#</u>	<u>Miles</u>	<u>Cost</u>
LSBP Projects (55 Bridges Replaced)	47	4.749	17,497,988
LSRP (LSBP Funds)	0	0.000	0
LSRP (SA Funds)	<u>2</u>	3.470	<u>1,486,400</u>
Total LSBP and LSRP Projects (LSBP & SA Funds)	<u><u>49</u></u>		<u><u>18,984,388</u></u>
State Aid & Federal Aid Projects (<u>including</u> Bridge Inspections)			
Construction			
Grading, Drainage Structures & Paving		122.826	
Grading, Drainage Structures & Gravel Surface		13.444	
Bridges		17.552	
Asphalt Overlay Construction		<u>637.549</u>	
Total Construction Improvements	58	<u><u>791.371</u></u>	41,890,225
Reseal & Maintenance Projects			
(Previously Paved State Aid Routes)	<u>30</u>	<u>2,611.213</u>	<u>18,330,800</u>
Total State Aid & Federal Aid Project (<u>including</u> Bridge Inspections)	<u><u>88</u></u>		<u><u>60,221,025</u></u>
NOTE: The above totals, by Counties, are included elsewhere in this report.			
Amounts and Types of Funds Contracted:			
State Aid			26,199,548
County			2,431,177
Federal Funds:			
MDOT Funds			150,000
Surface Transportation			2,923,228
Appalachian Access			559,888
Bridge Replacement			11,577,194
Bridge Inspection			8,380,090
Eastern Federal Land Highway (EFLH)			3,026,264
Emergency Relief			710,020
High Priority			1,908,081
High Risk Rural Road (HRRRP)			1,521,570
National Corridor Planning & Development (NCPD)			833,965
Total Funds Contracted			<u><u>60,221,025</u></u>
Grand Total all Projects	<u><u>137</u></u>		<u><u>79,205,413</u></u>

Projects Completed and/or Placed Under Contract from Beginning of Program in June, 1950, thru June 30, 2012

	<u>#</u>	<u>Miles</u>	<u>Cost</u>
LSBP Projects (1,743 Bridges Replaced)	1,041	177.750	313,076,282
LSRP (LSBP Funds)	8	20.963	6,551,000
LSRP (SA Funds)	<u>16</u>	<u>17.269</u>	<u>7,111,960</u>
 Total LSBP and LSRP Projects (LSBP & SA Funds)	 <u>1,065</u>		 <u>326,739,242</u>
 State Aid & Federal Aid Project (including Bridge Inspections) Construction			
Grading, Drainage Structures & Paving		11,077.071	
Grading, Drainage Structures & Gravel Surface		844.774	
Bridges		126.756	
Asphalt Overlay Construction		3,757.145	
Total Construction Improvements	8,542	<u>15,805.746</u>	2,218,432,245
 Reseal & Maintenance Projects (Previously Paved State Aid Routes)	 1,594	 <u>30,598.093</u>	 <u>630,737,157</u>
 Total State Aid & Federal Aid Project (including Bridge Inspections)	 <u>10,136</u>		 <u>2,849,169,402</u>
 Grand Totals all Projects	 <u>11,201</u>		 <u>3,175,908,644</u>

NOTE: The above totals, by Counties, are included elsewhere in this report.

Projects in Contract Stage as of June 30, 2012

	#	Miles	Cost
LSBP Projects	86	8.897	29,514,940
LSRP (LSBP Funds)	2	1.842	1,601,200
LSRP (SA Funds)	5	6.922	3,100,575
Total LSBP and LSRP Projects (LSBP & SA Funds)	<u>93</u>		<u>34,216,715</u>
State Aid Projects (State Aid Funds):			
Construction	28	20.781	16,411,633
Maintenance	30	136.770	16,997,106
Reseal	16	403.410	17,823,826
Federal Aid Projects (State Aid , Federal & LSBP Funds):			
Surface Transportation	18	19.979	9,855,610
STPG	1	112.012	546,911
Appalachian Access	6	3.403	2,891,240
Bridge Replacement	23	9.584	33,796,989
Bridge Inspection	5	0.000	11,776,618
Eastern Federal Land Highway (EFLH)	10	1.174	4,247,914
Emergency Relief	5	13.763	3,454,253
High Priority	36	111.906	53,406,487
High Risk Rural Road (HRRRP)	11	17.698	2,445,775
Public Land Highways	1	7.290	2,553,923
Total State Aid & Federal Aid Projects	<u>190</u>	<u>857.770</u>	<u>176,208,285</u>
Grand Totals all Projects	<u>283</u>	<u>875.431</u>	<u>210,425,000</u>

Estimated Program Volume for July 1, 2011, thru June 30, 2012

It is difficult to estimate the miles of construction and reseal improvements that will be let to contract during the coming fiscal year. However, the State Aid Road Construction Program has the potential for a \$100 to \$200 million total program for the fiscal year 2012. In addition, we expect to place under contract \$20 million in LSBP Funds.

As of June 30, 2012, programs (proposed improvements) have been adopted by the Boards of Supervisors and approved by the State Aid Engineer for the following work:

Type of Projects	Number of Projects	Estimated Cost
Total LSBP (System 81)	138	\$43,192,397
Total LSRP (LSBP Funds)(System 80)	0	\$0
Total LSRP (SA Funds)(System 80)	5	\$1,292,050
State Aid: (State Aid Funds Only)		
Construction (System 81)	47	\$23,869,451
Maintenance (System 81)	63	\$44,812,934
Reseal (System 81)	29	\$39,502,022
State Aid & Federal Aid Funds		
STP (System 82)	54	\$32,243,428
STPG (System 32)	3	\$955,500
APL (System 36)	2	\$887,000
BR (System 85)	73	\$65,205,128
EFLH (System 63)	8	\$3,554,088
ER (System 66)	14	\$867,571
HRRRP (System 25)	13	\$4,513,425
MS, FBD (System 19)	38	\$128,242,610
PLH (System 62)	3	\$566,349
GRAND TOTAL	490	\$389,703,953
Total State Aid	347	\$345,219,505

The Boards of Supervisors began the new four-year term on January 1, 2012, and have available for planning and expenditure purposes 90% of the State Aid revenue that will accrue during the 2012-2015 period.

Bridge Replacement and Rehabilitation is a major Federal program that has helped the counties to improve the seriously deficient condition of many State Aid and Federal Aid System bridges. Historically, the Mississippi Department of Transportation transferred approximately 30% of the Bridge Replacement funds that are apportioned to the State Aid program for replacement of deficient bridges on county roads. In fiscal year 2012, \$18,968,887 was transferred. State Aid is projected to receive for fiscal year 2013, \$15,000,000 to be transferred by Mississippi Department of Transportation.

The cost per mile for the construction of projects, embracing grading, drainage structures, small bridges, base and bituminous surfacing, ranges from \$117,323.98 per mile to \$2,160,377.36 per mile, depending on the soil conditions, availability of construction materials and terrain. The average cost of construction projects in fiscal year 2012 was \$586,082.46 per mile.

Projects involving large bridges with long spans and/or projects requiring higher design standards because of heavy traffic demands or other special conditions should not be considered in these cost ranges.

Liquid seal (resealing) projects range from \$29,496.30 to \$239,342.52 per mile, depending on the location and on the leveling and base course corrections needed. The average cost of reseal projects in fiscal year 2012 was \$79,556.76 per mile.

REVENUE SOURCES AND AMOUNTS

Revenues for the State Aid Program are derived from the following state and federal sources:

State Sources:

- (a) Section 27-65-75, Mississippi Code of 1972 (as amended by the 1994 and 1999 Regular Sessions of the Legislature), provides for a minimum diversion of \$48,000,000 or 23.25%, whichever is greater, from gasoline, diesel fuel or kerosene tax revenue and \$3,000,000 from sales tax collections into the Office of State Aid Road Construction special fund in each fiscal year.
- (b) Mississippi Code of 1972, Section 65-37-13 (c) provided that the Local System Bridge Replacement and Rehabilitation Fund be appropriated \$20 million from the General Fund, if the General Fund revenues reflect a growth of 2% or more for the succeeding fiscal year. The Local System Bridge Program funding is contingent upon receiving General Funds. The General Funds are transferred to the LSBP Special Fund after they are received from our appropriation. However, from FY 2004 to FY 2012 bonds have been approved in lieu of General Fund transfers, which have caused time delays in the receipt of bond proceeds. The State Treasurer and State Bond Commission had previously committed to securing loans from the Mississippi Development Bank to generate short term funds when needed to obligate to projects when bond proceeds are not yet available. A return to General Fund financing of the LSBP program instead of bond issues has been requested. If implemented, this should stabilize the cash flow process for LSBP projects.

The LSBP program received no General Fund revenue or bond proceeds for FY 2013. There was \$45.8 million of LSBP cash in Treasury at June 30, 2012. Approximately \$9.7 million of that is obligated by contract on projects. Another \$20 million could be obligated by December 31, 2012. This would leave the LSBP program with roughly \$15 million in unobligated cash. We currently obligate an average of \$3 million in new projects per month. We estimate that if the LSBP program is not funded, we will be out of unobligated cash by the end of FY 2013. This will result in advanced credits being revoked and the letting of projects being immediately halted.

The LSBP funds are obligated by formula to each of the 82 counties. As of June 30, 2012 there were 13 counties with a negative balance in unobligated cash and another 27 counties without enough unobligated cash to let a new LSBP project.

The LSBP fund earned interest on bond fund treasury accounts in the amount of \$175,818.19 for FY 2012.

- (c) Section 65-9-17 authorizes the counties to use County funds to supplement State Aid funds for the construction of State Aid roads.
- (d) The Economic Development Highway Act (Code Section 65-4-1) authorizes the Mississippi Development Authority (MDA) to assist political subdivisions with Highway Projects which encourage private companies to engage in high economic benefit projects within their area. These funds are made available to the county(ies) or municipality(ies) on an individual project basis and are administered in accordance with guidelines established by the MDA. The Office of State Aid is responsible for administering MDA projects that are not on the State Highway System.

Federal Sources (Regular):

MDOT provides a portion of the Surface Transportation Program funds and Bridge Replacement funds made available to the State of Mississippi by the Federal Government to the counties through the State Aid Office.

Federal Sources (Special):

- (a) Emergency Relief funds are made available by the Federal Government to the counties through the State Aid Office on an individual project basis, to reconstruct roads and bridges on Federal Aid highways damaged or destroyed by floods, hurricanes, catastrophic failure and other disasters.
- (d) Appalachian Access Highway funds are made available to the counties in the twenty-four county Appalachian area in northeast Mississippi on an individual project basis. These projects are administered by the State Aid Office on an individual project basis through the Federal Highway Administration.
- (c) Other funds earmarked by Congress for selected counties.

RECEIPTS AND DISBURSEMENTS

	State Aid Road Fund	Administration Fund	Local System Bridge Fund
BEGINNING FUNDS BALANCE 07/01/11			
Unobligated Funds	30,855,241	1,223,105	2,665,603
Project Funds	23,115,908		17,827,710
Federal-Aid Matching Funds	(2,635,317)		
Total Beginning Funds Balance	51,335,832	1,223,105	20,493,313
RECEIPTS			
Gasoline Tax(Section 27-65-75)	47,267,361	5,452,439	
Proceeds from the Sale of Bonds			49,742,317
Sales Tax(Section 27-65-75)	3,000,000		
County Contributions	2,369,927		170,703
FHWA Reimbursements	43,823,177		
Federal Aid Matching Requirements	8,799,884		
Interest on Investments			175,680
Total Receipts	105,260,349	5,452,439	50,088,699
Total Funds Available for Expenditures	156,596,182	6,675,544	70,582,012
DISBURSEMENTS			
Construction Expenditures			
State Construction	35,697,602		25,038,127
Federal-aid Construction	55,659,546		
Retainage	273,944		(68,248)
MDOT Testing	74,377		195,937
Total Construction	91,705,469		25,165,816
Other Expenditures			
Transfers to State Highway Fund 3941	8,799,884		
Transfer to Administration Fund	5,340,966		
Transfer to Other Funds			
Payments on MDB Loan	2,751,930		
Administrative Expenditures		3,600,773	
Refund to Counties and Misc. Transfers			203,429
Total Other Disbursements	16,892,779	3,600,773	203,429
Total Disbursements	108,598,249	3,600,773	25,369,245
ENDING FUND BALANCE 6/30/12			
Unobligated Funds	50,293,164	3,074,771	35,512,928
Project Funds	19,491,244		9,699,840
Federal-Aid Matching Funds	(10,364,053)		
Total Ending Funds Balance	59,420,356	3,074,771	45,212,767
Total Funds Accounted For	168,018,605	6,675,544	70,582,012

FUNDING SUMMARY

FUNDS MADE AVAILABLE DURING FY 2012

Sources:		
Gasoline Tax (Section 27-65-75)	52,719,800	
Sales Tax (Section 27-65-75)	3,000,000	
County Contributions	2,540,630	
Federal Aid Matching Requirements	8,799,884	
Interest on Investments	175,680	
Administrative Transfer from Counties	5,340,966	
Proceeds from the Sale of Bonds	49,742,317	
Federal Funds--		
FHWA Reimbursements	43,823,177	
Total Federal Funds	<u>43,823,177</u>	
Total Fiscal Year Revenue		166,142,453
Less: Requirements for Administrative Expenses		<u>(5,340,966)</u>
Total Funds Made Available for Construction During FY 2012		<u><u>160,801,487</u></u>

PROJECTION OF REVENUE FOR FY 2013 AND FY 2014

Sources:	<u>FY 2013</u>	<u>FY 2014</u>
Gasoline Tax (Section 27-65-75)	57,000,000	57,000,000
Sales Tax (Section 27-65-75)	3,000,000	3,000,000
County Contributions	19,848,350	19,848,350
Federal Aid Matching Requirements	55,000,000	55,000,000
Miscellaneous State Aid Revenue	1,007	1,007
Local System Bridge Funds	40,000,000	40,000,000
Interest on Investments	160,000	160,000
Administrative Transfer from Counties	5,290,000	5,406,817
Federal Funds - FHWA Reimbursements	15,000,000	15,000,000
Total Fiscal Year Revenue	<u>195,299,357</u>	<u>195,416,174</u>
Less: Requirements for Administrative Expenses	(5,290,000)	(5,406,817)
Total Revenue Available for Construction	<u><u>190,009,357</u></u>	<u><u>190,009,357</u></u>

SUMMARY OF ADMINISTRATIVE EXPENSES

Salaries, Wages and Fringe Benefits:

Salaries and Wages	2,366,571	
Personal Leave Pay	17,877	
Retirement Matching	297,172	
Social Security Matching	173,645	
Workers' Compensation	13,270	
Group Health Insurance	205,056	
Group Life Insurance	5,215	
Unemployment Insurance Tax	7,061	
Cafeteria Plan	2,886	3,088,752

Travel:

In-State	31,804	
Out-of-State	15,039	46,843

Contractual Services:

Tuition & Employee Training	19,499	
Liability Insurance Contributions	13,481	
Postage	10,000	
Freight	317	
Advertising	1,241	
Rents	16,963	
Repairs to Motor Vehicles	5,287	
Repairs/Service to Office Equipment	325	
Engineering Services	294,437	
SAAS	6,126	
MMRS	7,969	
Audit Department	38,989	
State Personnel Board	7,835	
Temporary Employment Fees	8,238	
Fidelity Bonds	5,300	
Membership Dues	620	
Procurement Card Purchases	77	
Other Fees & Services	44,489	481,193

Information Technology:

IS Professional Fees - Outside Vendor	743,350	
ITS Fees	6,546	
Service Fees to State Computer Center	15,414	
Software Acquisition	9,917	
IT Equipment Repairs	11,171	
Telephone Fees	14,444	
Long Distance	739	
Usage Time Cellular Telephones	16,290	817,872

SUMMARY OF ADMINISTRATIVE EXPENSES

Commodities:

Printing and Binding	3,941	
Duplication Supplies	4,608	
Office Supplies and Materials	8,888	
Paper Supplies	2,572	
Maps and Manuals	437	
Office Equipment	5,384	
Fuel Card - Gas, Oils, Greases, Etc.	33,998	
Tires and Tubes - Auto	1,296	
Repairs to Motor Vehicles	2,351	
Cameras	318	
Batteries & Accessories for Vehicles	1,347	
Other Miscellaneous Expenses	11,583	
Procurement Card Purchases	6,824	83,548

Capital Outlay:

Automobiles	17,727	
Mainframe Systems Equipment	66,410	84,137

Total

4,602,345

OUT-OF-STATE TRAVEL TO CONVENTIONS AND MEETINGS

Employee's Name	Travel Destination	Travel Meeting Title	Total Amount
Bond, John Ferris Jr	Atlanta, GA	AASHTO National Civil Rights Symposium	\$ 1,384.00
Cooper, Kimberly Renee	Atlanta, GA	AASHTO National Civil Rights Symposium	\$ 1,410.00
Davis, Charles W	Louisville, KY	SASHTO Annual Meeting	\$ 1,774.00
Glover, Lanny B.	Louisville, KY	SASHTO Annual Meeting	\$ 1,590.00
Miller, J. Brooks SR	Louisville, KY	SASHTO Annual Meeting	\$ 2,356.00
Miller, J. Brooks SR	Detroit, MI	AASHTO Annual Meeting	\$ 3,901.00
Mohr, Sandra Lynn	Atlanta, GA	AASHTO National Civil Rights Symposium	\$ 1,396.00
Stuart, Brandi Westbrook	Seattle, WA	AGA Government Performance Measurements Conference	<u>\$ 1,228.00</u>
GRAND TOTAL			<u><u>\$ 15,039.00</u></u>

AUTOMOBILE EXPENDITURES FOR STATE-OWNED VEHICLES

Make/Model	Year	Tag #	Cost	Cost of Use Estimate	Operating Expense	Total Expense	Miles Traveled	Cost per Mile
Ford/Taurus	2005	G32905	\$ 12,396.00	\$ 214.03	\$ 440.23	\$ 3,133.46	2,518	\$ 1.24
Ford/Crown Victoria	2005	G32908	\$ 19,288.00	\$ 520.63	\$ 772.25	\$ 5,150.48	6,125	\$ 0.84
Chevrolet/Malibu	2007	G42494	\$ 14,990.00	\$ 866.32	\$ 1,078.34	\$ 4,942.66	10,192	\$ 0.48
Chevrolet/Impala	2008	G44301	\$ 15,800.00	\$ 1,440.58	\$ 1,854.28	\$ 6,454.86	16,948	\$ 0.38
Chevrolet/Impala	2008	G44302	\$ 15,800.00	\$ 1,893.63	\$ 2,873.52	\$ 7,927.15	22,278	\$ 0.36
Chevrolet/Impala	2009	G50967	\$ 16,679.00	\$ 2,456.08	\$ 3,234.08	\$ 9,025.96	28,895	\$ 0.31
Nissan/Titan	2009	G51350	\$ 23,756.00	\$ 959.82	\$ 2,179.27	\$ 7,890.29	11,292	\$ 0.70
Nissan/Titan	2009	G51349	\$ 23,756.00	\$ 1,015.07	\$ 2,181.86	\$ 7,948.13	11,942	\$ 0.67
Chevrolet/Impala	2010	G52757	\$ 17,291.00	\$ 2,430.66	\$ 2,891.47	\$ 8,780.33	28,596	\$ 0.31
Chevrolet/Impala	2010	G52756	\$ 17,291.00	\$ 2,119.22	\$ 2,197.13	\$ 7,774.55	24,932	\$ 0.31
Chevrolet/Impala	2010	G52758	\$ 17,291.00	\$ 4,332.37	\$ 5,747.90	\$ 13,538.47	50,969	\$ 0.27
Chevrolet/Impala	2011	G57409	\$ 17,291.00	\$ 2,442.65	\$ 3,792.08	\$ 9,692.93	28,737.00	\$ 0.34
Ford/F150	2011	G57577	\$ 20,389.00	\$ 1,308.49	\$ 2,882.31	\$ 8,268.60	15,394.00	\$ 0.54
Chevrolet/Impala	2012	G22832	\$ 17,555.00	\$ -	\$ -	\$ -	-	\$ -

IMPROVEMENTS LET TO CONTRACT FROM JULY 1, 2011 THRU JUNE 30, 2012

County	Construction Miles and Cost						Reseal & Maintenance		
	Grading &		Bridges		Resur-	Total	Cost	Miles	Cost
	Surfacing	Gravel	#	Miles	facing	Miles			
Adams	1.249	0.620	-	-	-	1.869	695,100	22.693	-
Alcorn	5.231	-	7	0.228	-	5.459	-	46.218	647,000
Amite	1.609	-	3	0.232	41.678	43.519	-	-	-
Attala	0.723	0.501	11	0.432	34.486	36.142	1,552,500	67.646	-
Benton	2.977	0.138	6	0.415	-	3.530	345,050	0.036	-
Bolivar	0.132	0.164	2	0.063	-	0.359	1,063,800	40.859	-
Calhoun	-	0.231	2	0.035	-	0.266	3,779,200	12.943	-
Carroll	-	0.218	5	0.365	46.856	47.439	-	-	1,623,100
Chickasaw	4.977	0.036	2	0.117	-	5.130	417,311	16.627	-
Choctaw	0.140	0.163	3	0.123	-	0.426	-	52.882	298,300
Claiborne	1.636	-	-	-	5.180	6.816	-	22.698	-
Clarke	0.419	-	2	0.067	-	0.486	-	43.676	-
Clay	-	0.166	4	0.455	-	0.621	299,700	33.534	-
Coahoma	-	-	-	-	7.604	7.604	583,900	24.293	-
Copiah	0.199	0.376	6	0.621	41.730	42.926	-	-	-
Covington	1.008	0.237	5	0.150	3.910	5.305	424,500	23.995	1,426,000
DeSoto	0.738	-	3	0.033	3.965	4.736	-	7.029	1,274,700
Forrest	-	-	-	-	11.594	11.594	-	43.941	-
Franklin	4.197	0.417	3	0.340	-	4.954	1,731,700	41.088	-
George	0.400	0.089	2	0.038	-	0.527	-	-	-
Greene	-	0.055	3	0.181	18.989	19.225	-	0.318	-
Grenada	0.964	-	-	-	-	0.964	1,319,400	38.093	320,100
Hancock	-	-	1	0.123	28.432	28.555	-	6.550	484,400
Harrison	0.330	0.093	7	0.163	19.984	20.570	604,700	10.342	526,500
Hinds	0.694	0.128	8	0.437	17.678	18.937	-	89.588	-
Holmes	-	0.160	3	0.300	34.744	35.204	617,200	0.074	-
Humphreys	1.436	-	3	0.527	3.558	5.521	25,300	0.077	-
Issaquena	-	-	-	-	-	-	-	5.003	-
Itawamba	0.271	-	6	0.370	6.649	7.290	-	71.947	-
Jackson	-	-	1	0.031	-	0.031	-	11.805	-
Jasper	0.092	0.117	7	0.126	-	0.335	-	0.046	-
Jefferson	0.655	0.331	4	0.159	2.443	3.588	-	22.956	-
Jefferson Davis	0.561	-	3	0.077	-	0.638	797,900	55.362	-
Jones	0.296	-	5	0.401	10.106	10.803	917,800	162.646	1,178,000
Kemper	1.532	1.982	3	0.126	-	3.640	-	86.654	-
Lafayette	0.236	0.392	8	0.249	4.392	5.269	1,840,600	18.294	450,400
Lamar	0.184	-	2	0.095	-	0.279	-	6.381	-
Lauderdale	1.743	-	8	0.533	-	2.276	752,700	4.543	-
Lawrence	5.641	0.237	8	1.119	7.549	14.546	-	35.116	254,800
Leake	-	-	1	0.473	22.700	23.173	-	10.861	-
Lee	1.679	-	3	0.472	-	2.151	-	0.454	-
Leflore	-	-	-	-	2.940	2.940	1,005,000	50.830	-
Lincoln	10.631	0.467	3	0.071	1.335	12.504	-	134.518	231,900
Lowndes	-	0.525	2	0.047	0.470	1.042	-	86.867	-
Madison	0.474	-	1	0.037	5.147	5.658	-	8.022	-
Marion	2.159	0.238	1	0.045	-	2.442	-	0.179	-

IMPROVEMENTS LET TO CONTRACT FROM JULY 1, 2011 THRU JUNE 30, 2012

County	Construction Miles and Cost							Reseal & Maintenance	
	Grading &		Bridges		Resur-	Total	Cost	Miles	Cost
	Surfacing	Gravel	#	Miles	facing	Miles			
Marshall	7.872	0.252	4	0.120	2.451	10.695	2,635,400	96.775	974,600
Monroe	0.920	0.141	4	0.180	10.945	12.186	1,220,760	48.105	1,048,800
Montgomery	-	0.391	3	0.079	-	0.470	-	6.567	-
Neshoba	3.078	-	4	0.124	-	3.202	-	55.328	-
Newton	0.250	-	1	0.031	-	0.281	538,000	26.045	282,800
Noxubee	-	0.110	1	0.026	-	0.136	-	47.010	-
Oktibbeha	2.929	-	-	-	9.509	12.438	78,300	50.764	-
Panola	0.320	0.174	8	0.639	2.524	3.657	-	60.025	340,400
Pearl River	0.997	0.033	10	0.334	5.109	6.473	249,800	93.528	649,000
Perry	2.892	0.070	4	0.148	-	3.110	701,400	34.691	-
Pike	1.484	-	4	0.450	-	1.934	-	75.215	-
Pontotoc	1.254	0.651	3	0.106	-	2.011	-	11.847	-
Prentiss	0.902	-	5	0.189	7.096	8.187	854,100	-	-
Quitman	0.546	0.030	1	0.017	9.151	9.744	-	-	1,078,300
Rankin	6.297	-	-	-	41.625	47.922	1,770,000	-	-
Scott	0.196	0.612	4	0.753	-	1.561	-	38.588	-
Sharkey	-	0.151	1	0.018	3.854	4.023	-	7.038	2,356,300
Simpson	-	0.245	3	0.292	1.865	2.402	329,600	32.353	1,440,500
Smith	1.359	0.670	7	0.147	-	2.176	1,403,700	0.066	-
Stone	1.928	-	2	0.034	7.263	9.225	-	22.166	-
Sunflower	4.060	0.014	3	0.256	3.612	7.942	2,146,600	23.024	-
Tallahatchie	5.946	0.151	2	0.228	3.650	9.975	-	3.017	-
Tate	-	0.145	6	0.244	-	0.389	-	3.297	1,034,800
Tippah	1.567	0.118	4	0.403	-	2.088	-	33.310	-
Tishomingo	0.032	0.030	4	0.040	3.050	3.152	250,100	42.149	-
Tunica	-	-	1	0.042	-	0.042	-	9.221	-
Union	-	-	1	0.126	-	0.126	-	64.214	-
Walthall	-	0.054	3	0.344	59.710	60.108	-	59.302	160,000
Warren	3.114	-	6	0.650	-	3.764	519,900	4.104	-
Washington	0.497	0.201	6	0.441	10.246	11.385	-	-	-
Wayne	0.087	-	-	-	67.704	67.791	249,614	-	-
Webster	0.278	0.333	6	0.287	-	0.898	138,500	0.254	259,100
Wilkinson	-	0.480	3	0.193	-	0.673	-	49.917	-
Winston	6.859	-	5	0.185	4.066	11.110	1,147,400	59.516	-
Yalobusha	0.127	0.081	4	0.389	-	0.597	-	35.563	-
Yazoo	11.822	0.226	3	0.161	-	12.209	503,600	100.530	-
Statewide							8,380,090		-
Totals	122.826	13.444	283	17.552	637.549	791.371	41,890,225	2,611.213	18,339,800

IMPROVEMENTS MADE ON THE STATE AID SYSTEM FROM JUNE 30, 1950, THRU JUNE 30, 2012

County	State Aid Mileage		State Aid Improvements							Funds Expended or Obligated		
	Total Allocation	Actually Designated	Paved Mileage	Grading & Grav. Surf.	Brs. Structural		Total Actual Miles	Overlay or Resurf.	Total Construction	Surfacing Reseal/Maint.	To Contact	
					#	Miles					Construction	Reseal/Mant.
Adams	244.42	192.6	48.436	1.362	19	0.604	50.402	37.698	88.100	120.163	22,149,020	2,952,756
Alcorn	280.16	185.1	117.431	1.788	55	1.185	120.404	27.107	147.511	322.529	20,240,537	9,283,121
Amite	398.65	253.15	191.114	3.889	54	1.571	196.574	96.894	293.468	584.328	30,301,414	7,876,245
Attala	345.03	250.85	145.107	9.208	73	1.952	156.267	34.486	190.753	602.856	31,444,342	7,931,898
Benton	205.57	168.06	105.002	9.702	38	1.024	115.728	-	115.728	171.104	17,467,271	2,825,702
Bolivar	339.41	202.7	105.850	7.281	48	0.937	114.068	80.137	194.205	248.346	27,336,370	7,134,849
Calhoun	321.72	235.3	129.197	15.969	93	1.667	146.833	47.753	194.586	505.681	29,741,583	6,562,283
Carroll	300.74	216.15	110.090	13.243	72	1.906	125.239	92.912	218.151	347.281	23,113,366	8,988,212
Chickasaw	247.19	191.28	109.947	15.389	67	1.434	126.770	0.463	127.233	325.723	18,692,147	5,873,093
Choctaw	235.68	199.7	111.913	30.632	86	1.598	144.143	0.225	144.368	380.416	19,130,216	8,020,006
Claiborne	240.12	154.5	94.272	10.000	25	1.202	105.474	91.931	197.405	244.529	23,748,134	6,513,477
Clarke	370.67	291	206.434	0.934	57	1.645	209.013	32.970	241.983	713.510	26,000,335	10,555,958
Clay	223.9	168	96.968	9.891	68	1.958	108.817	30.530	139.347	311.478	30,805,619	7,462,347
Coahoma	340.37	216.1	151.098	1.345	27	0.793	153.236	167.866	321.102	366.866	26,556,095	5,084,101
Copiah	442.94	387.7	240.538	4.791	112	3.275	248.604	85.778	334.382	645.405	41,466,431	10,616,275
Covington	289.12	223.8	147.237	2.581	79	2.484	152.302	13.904	166.206	587.549	24,755,190	9,402,451
DeSoto	345.17	197.4	100.545	20.603	51	0.981	122.129	36.685	158.814	168.385	31,320,455	9,778,975
Forrest	319.89	261.2	63.807	5.608	70	2.105	71.520	85.944	157.464	354.508	23,384,436	9,338,005
Franklin	398.65	225.88	163.139	1.397	43	2.019	166.555	37.215	203.770	453.142	31,067,348	8,775,854
George	258.73	177.3	124.349	5.299	49	1.151	130.799	11.302	142.101	300.723	19,050,544	7,352,387
Greene	412.64	290.3	207.278	9.604	93	2.268	219.150	58.250	277.400	454.523	38,316,994	6,761,280
Grenada	214.27	165.28	102.065	1.914	31	0.740	104.719	25.741	130.460	459.199	32,172,549	7,410,014
Hancock	251.92	163.2	96.943	10.139	42	0.798	107.880	51.455	159.335	189.897	38,002,988	7,575,616
Harrison	414.63	267.7	134.052	1.964	54	2.047	138.063	42.171	180.234	394.710	43,438,658	9,361,110
Hinds	440.95	359	248.292	1.632	45	1.727	251.651	105.198	356.849	331.789	42,365,186	8,915,129
Holmes	445.27	322.4	222.485	18.541	63	1.710	242.736	100.767	343.503	679.125	32,822,148	11,426,224
Humphreys	223.26	204.9	114.239	16.243	35	1.103	131.585	10.701	142.286	253.559	15,885,320	6,378,169
Issaquena	128.89	91.1	36.131	21.852	7	0.161	58.144	28.007	86.151	105.077	6,572,376	4,734,432

IMPROVEMENTS MADE ON THE STATE AID SYSTEM FROM JUNE 30, 1950, THRU JUNE 30, 2012

County	State Aid Mileage		State Aid Improvements										Funds Expended or Obligated	
	Total Allocation	Actually Designated	Paved Mileage	Grading & Grav. Surf.	Brs. Structural		Total Actual Miles	Overlay or Resurf.	Total Construction	Surfacing Reseal/Maint.	To Contact			
					#	Miles					Construction	Reseal/Maint.		
Itawamba	326.98	222.35	161.287	6.298	86	2.068	169.653	20.088	189.741	403.828	29,203,679	6,732,968		
Jackson	351.66	146.3	60.343	6.723	29	1.409	68.475	7.893	76.368	99.795	25,187,632	7,687,410		
Jasper	307.73	291.4	172.709	4.395	81	1.976	179.080	26.025	205.105	387.182	26,581,370	6,713,250		
Jefferson	221.47	188.8	75.461	6.676	48	1.207	83.344	23.699	107.043	298.948	15,701,370	7,772,577		
Jefferson Davis	251.58	162.83	113.336	3.829	57	1.310	118.475	46.067	164.542	415.256	19,660,069	7,229,708		
Jones	502.2	329.3	179.653	30.507	82	2.660	212.820	59.545	272.365	716.893	37,155,158	12,676,789		
Kemper	382.33	288.35	206.854	32.665	89	1.683	241.202	29.968	271.170	447.422	31,301,115	6,956,048		
Lafayette	341.95	184.7	108.446	8.802	106	2.158	119.406	35.438	154.844	355.393	26,037,408	7,834,253		
Lamar	318.1	207.78	110.488	1.474	52	1.601	113.563	87.450	201.013	483.832	22,631,208	10,011,740		
Lauderdale	439.39	412.3	248.877	1.619	70	1.874	252.370	96.368	348.738	466.253	29,514,043	8,459,098		
Lawrence	261.1	207.72	125.901	8.414	67	2.553	136.868	73.548	210.416	456.453	49,993,431	7,347,771		
Leake	296.54	223.33	146.788	11.073	61	1.928	159.789	38.697	198.486	343.878	28,126,419	6,597,869		
Lee	343.24	194.4	109.494	17.876	74	1.912	129.282	19.648	148.930	357.368	30,333,574	11,423,646		
Leftore	311.14	275.9	134.409	5.456	59	2.585	142.450	9.928	152.378	572.890	27,215,040	10,419,670		
Lincoln	433.62	358.8	208.850	4.654	73	1.928	215.432	32.931	248.363	635.983	42,307,996	9,933,352		
Lowndes	334.88	191.4	122.257	7.491	63	1.377	131.125	119.007	250.132	377.376	30,998,380	7,793,687		
Madison	369.85	285.3	154.941	3.518	59	1.433	159.892	57.271	217.163	429.229	29,387,782	7,910,239		
Marion	331.94	287.6	185.490	4.076	63	1.271	190.837	92.845	283.682	607.402	22,026,603	9,218,672		
Marshall	315.61	211	123.760	8.683	44	1.602	134.045	13.985	148.030	277.673	37,979,366	6,587,738		
Monroe	328.95	203.7	143.269	7.595	49	1.084	151.948	37.745	189.693	404.947	27,236,545	9,220,123		
Montgomery	251.78	210.85	89.916	24.707	84	1.596	116.219	10.429	126.648	286.416	20,348,641	7,954,554		
Neshoba	377.67	312.2	185.980	34.354	91	1.638	221.972	9.884	231.856	399.864	31,193,097	7,200,892		
Newton	296.86	273	170.641	6.476	71	1.140	178.257	12.234	190.491	344.842	24,404,252	5,994,548		
Noxubee	317.05	222	127.970	6.607	57	1.151	135.728	19.013	154.741	379.604	23,681,036	5,895,890		
Oktibbeha	285.13	202.4	134.308	10.305	24	0.411	145.024	30.737	175.761	458.974	21,558,559	6,882,287		
Panola	380.4	250.4	157.748	6.586	62	1.813	166.147	116.497	282.644	478.322	32,610,631	6,423,967		
Pearl River	410.01	242	146.983	14.310	70	2.131	163.424	49.026	212.450	635.711	32,150,364	11,692,120		
Perry	286.75	223.8	90.762	6.110	68	1.635	98.507	32.700	131.207	442.908	26,416,495	8,041,906		

IMPROVEMENTS MADE ON THE STATE AID SYSTEM FROM JUNE 30, 1950, THRU JUNE 30, 2012

County	State Aid Mileage		State Aid Improvements										Funds Expended or Obligated	
	Total Allocation	Actually Designated	Paved Mileage	Grading & Grav. Surf.	Brs. Structural		Total Actual Miles	Overlay or Resurf.	Total Construction	Surfacing Reseal/Maint.	To Contact			
					#	Miles					Construction	Reseal/Mant.		
Pike	338.5	257.1	133.282	15.627	62	1.733	150.642	7.637	158.279	522.436	23,383,433	10,744,638		
Pontotoc	267.15	180.09	99.297	10.876	27	0.669	110.842	4.712	115.554	243.738	16,007,028	8,246,626		
Prentiss	281.65	198.52	124.065	20.356	73	1.560	145.981	29.750	175.731	235.924	24,909,940	6,032,754		
Quitman	217.38	184.6	86.600	6.268	50	1.363	94.231	33.643	127.874	133.779	17,853,222	4,544,994		
Rankin	541.49	270.2	143.255	10.242	81	1.523	155.020	133.792	288.812	284.887	54,674,521	9,143,163		
Scott	310.55	223.3	135.873	15.732	88	1.972	153.577	11.786	165.363	397.764	23,116,092	8,734,432		
Sharkey	164.28	111.6	73.556	14.543	16	0.486	88.585	40.846	129.431	169.194	11,977,300	7,354,896		
Simpson	348.73	286.75	171.654	4.117	82	2.344	178.115	22.089	200.204	539.257	29,610,721	8,833,803		
Smith	321.72	260	184.169	11.297	73	1.963	197.429	14.211	211.640	473.399	31,201,707	6,798,492		
Stone	223.6	181.9	127.397	2.088	35	0.685	130.170	50.856	181.026	344.627	20,666,320	4,650,460		
Sunflower	412.64	249.8	142.237	22.208	54	1.816	166.261	58.876	225.137	259.245	35,600,486	6,740,558		
Tallahatchie	296.07	289.43	146.786	22.051	42	1.523	170.360	26.991	197.351	463.680	25,815,655	7,588,635		
Tate	244.16	164.8	51.274	17.563	64	1.918	70.755	25.072	95.827	170.643	18,567,779	5,929,506		
Tippah	290.95	217.3	139.723	13.772	54	1.192	154.687	9.368	164.055	272.038	25,147,138	4,272,669		
Tishomingo	263.67	205	122.578	4.137	59	1.215	127.930	66.023	193.953	192.616	23,084,867	7,852,019		
Tunica	242.45	204.2	139.189	12.521	79	0.624	152.334	92.584	244.918	203.571	17,505,666	5,884,191		
Union	277.64	188.1	107.272	16.112	48	1.163	124.547	17.358	141.905	234.215	24,980,632	5,363,487		
Walthall	274.85	218.86	126.888	3.183	72	1.678	131.749	87.873	219.622	538.912	18,120,895	11,172,229		
Warren	284.23	193.2	70.877	8.015	35	1.412	80.304	47.143	127.447	232.245	26,230,788	4,910,456		
Washington	377.67	359.5	78.305	0.859	63	2.242	81.406	81.520	162.926	105.026	36,292,206	5,186,288		
Wayne	410.31	372.1	221.267	11.439	70	1.736	234.442	76.001	310.443	632.384	29,290,786	11,940,471		
Webster	277.42	209.2	107.201	7.596	81	1.504	116.301	5.187	121.488	532.862	20,818,587	8,037,385		
Wilkinson	223.8	152.9	95.150	2.116	33	1.042	98.308	39.793	138.101	324.112	18,976,079	5,755,472		
Winston	296.54	280.55	205.485	34.920	70	1.379	241.784	27.159	268.943	324.493	31,083,561	3,778,392		
Yalobusha	212.75	176.7	99.583	1.365	49	1.207	102.155	-	102.155	520.915	16,170,406	6,839,234		
Yazoo	400.98	317.8	223.228	11.691	40	1.629	236.548	104.119	340.667	907.759	29,058,095	10,897,162		
Totals	25,857.04	19,025.06	11,077.071	844.774	4,895	126.756	12,048.601	3,757.145	15,805.746	31,846.764	2,218,432,245	630,737,157		

STATE AID PROGRAM CONSTRUCTION AND ENGINEERING DISBURSEMENTS BY COUNTY AND SYSTEM FROM JULY 1, 2011 THRU JUNE 30, 2012

COUNTY	RR CROSSING	MDOT	HIGH RISK	RURAL	ACCESS	APPALACHIAN	PUBLIC	DEFENSE	EMERGENCY	LOCAL	STATE AID	SURFACE	BRIDGE		TOTALS BY COUNTY
	RRS/STP-C & RR SIGNAL RRP/STP-S	High Priority MS	Rural Road Program	Secondary Grade RSG/STPG	Highway Lakes AHL	Access Highway APL	Land Highways EFLH/PLH	Access AGMC	Relief System	System Road Projects	System SAP	Transportation System	System BR	System 85	
Adams							623,619				0				623,619
Alcorn											26,539				26,539
Amite											0	159,891		0	159,891
Attala											0		427,313		427,313
Benton							502,212						817,903		1,320,115
Bolivar		18,357								834,314			628,049		1,480,720
Calhoun											240,022	252,005	279,378		519,400
Carroll		22,527									67,163				341,695
Chickasaw						700				274,075	1,070,373				1,345,148
Choctaw		269,130					135		109,767	4,200	342,471		5,158		461,731
Claiborne											849,281				1,118,412
Clarke											3,419				3,419
Clay			17,568								56,756	251,887	3,582		329,793
Coahoma		727,476	213,561								9,050		14,101		266,495
Copiah		26,087	226,307								58,502	157,642	1,463,771		2,016,743
Covington			336,828										2,100		4,090
DeSoto		1,990									36,364				36,364
Forrest							8,386				680,972		1,174,804		1,864,162
Franklin											89,954	17,586	727,580		835,120
George											470,108		14,083		484,191
Greene											263,406				388,773
Grenada		125,367									501,131	638,357			1,228,472
Hancock									88,984		534,187	762,446			1,314,977
Harrison							4,050		14,294		589,963	51,277			7,638,537
Hinds		6,707,934	289,363								29,145		113,869		314,744
Holmes		171,731											1,999		725,019
Humphreys		699,597							23,423						0
Issaquena											113,987				189,207
Itawamba											2,221,224	47,747			2,525,801
Jackson		256,830									323,589	7,068			330,657
Jasper													202,619		239,734
Jefferson		37,116									552,244	272,877	478,188		1,303,309
Jeff Davis											677,928	194,992			1,892,845
Jones			551,954								2,298,287		89		2,298,376
Kemper											385,787	658,692			1,412,790
Lafayette										272,507	106,000		34,198		140,198
Lamar											173,983	362,820	97,709		634,512
Lauderdale											323,674		45,987		676,693
Lawrence		307,032									632,761		126,966		759,727
Leake											120,300				288,388
Lee						168,088					198	797,940			1,157,797
Leflore		19,874					339,785				404,761	171,130			2,026,786
Lincoln		1,397,898				10,760									

OFFICE OF STATE AID ROAD CONSTRUCTION

STATE AID PROGRAM CONSTRUCTION AND ENGINEERING DISBURSEMENTS BY COUNTY AND SYSTEM FROM JULY 1, 2011 THRU JUNE 30, 2012

COUNTY	RR CROSSING		MDOT HIGH PRIORITY MS	HIGH RISK RURAL ROAD PROGRAM	RURAL SECONDARY GRADE RSG/STPG	ACCESS HIGHWAY LAKES AHL	APPALACHIAN ACCESS HIGHWAY APL		PUBLIC LAND HIGHWAYS EFLH/PLH	DEFENSE ACCESS AGMC	EMERGENCY CONGESTION RELIEF		LOCAL SYSTEM ROAD PROJECTS	STATE AID PROJECTS SAP		SURFACE TRANSPORTATION RURAL COUNTREPLACEMENT STP		BRIDGE REPLACEMENT BR		TOTALS BY COUNTY	
	System	01 & 02					System	System			System	System		System	System	System	System	System	System		System
Lowdes																					115,264
Madison															1,898,712						1,898,712
Marion															240,889						267,889
Marshall			1,086,092					113,103				236,591			898,636		276,428				3,705,256
Monroe															795,154		1,119,888				5,114,055
Montgomery																					0
Neshoba																					310,441
Newton															978,903						978,903
Noxubee															418,761						418,761
Okfuskeena				3,216											1,790,758		24,660				1,941,658
Panola															29,289						124,875
Pearl River			220,857												739,916		301,654				1,264,277
Perry									1,098,201						166,631						1,334,649
Pike				113,388											47,146						223,320
Pontotoc															133,922						1,202,304
Prentiss									351,561						1,139,176						461,606
Quitman									45,433												2,379,915
Rankin																					3,710,267
Scott															81,599						208,891
Sharkey									150,676						1,488,033						1,638,709
Simpson				279,643											19,490						311,855
Smith				57,393					374,091						72,549						1,385,554
Stone				127,958											1,423,037						1,550,995
Sunflower															82,295						1,545,382
Tallahatchie																					12,558
Tate				5,984											729,455						1,094,381
Tippah															231,817						264,998
Tishomingo															111,485		659,912				771,398
Tunica																					6,160
Union															1,829						9,329
Walshall															145,185						150,722
Warren															1,019,283						2,925,038
Washington															609,819						3,017,676
Wayne			1,141,730																		197,165
Webster															227,181						811,147
Wilkinson															340,638						350,701
Winston															751,664						1,670,584
Yalobusha															29,708						311,505
Yazoo															291,527						735,238
Service Center *															40,075						40,075
Statewide **																					5,140,869
TOTALS BY SY:	0.00		19,783,789	2,217,179	543,191		0	824,689	3,424,545	0	1,012,575	0	1,757,105	31,228,093	8,290,397	22,623,904	91,705,468				

* System 81, Testing Charges paid to Calvert on SAP 99 99 and to Burns & Cooley on SAP 99 100

** System 82, Wetland Mitigation, System 85, Bridge Inspection and Bridge Posting Projects

**LOCAL SYSTEM BRIDGE PROGRAM CONSTRUCTION AND ENGINEERING DISBURSEMENTS
BY COUNTY AND SYSTEM FROM JULY 1, 2011 THRU JUNE 30, 2012**

COUNTY	LOCAL SYSTEM	LOCAL SYSTEM	TOTALS BY COUNTY
	ROAD	BRIDGE	
	PROJECTS	PROJECTS	
	System 80	System 81	
Adams		4,546	4,546
Alcorn		14,836	14,836
Amite		18,017	18,017
Attala		579,003	579,003
Benton		0	0
Bolivar		447,077	447,077
Calhoun		283,113	283,113
Carroll		630,072	630,072
Chickasaw		207,693	207,693
Choctaw		269,512	269,512
Claiborne		0	0
Clarke		175,809	175,809
Clay		1,239	1,239
Coahoma	1,093,547	0	1,093,547
Copiah		770,885	770,885
Covington		209,653	209,653
DeSoto	25,232	0	25,232
Forrest		141,976	141,976
Franklin		845,184	845,184
George		17,949	17,949
Greene		211,060	211,060
Grenada	146,268		146,268
Hancock		23,278	23,278
Harrison		1,041,892	1,041,892
Hinds		663,706	663,706
Holmes		549,539	549,539
Humphreys		468,347	468,347
Issaquena		0	0
Itawamba		363,552	363,552
Jackson		10,998	10,998
Jasper		190,469	190,469

**LOCAL SYSTEM BRIDGE PROGRAM CONSTRUCTION AND ENGINEERING DISBURSEMENTS
BY COUNTY AND SYSTEM FROM JULY 1, 2011 THRU JUNE 30, 2012**

COUNTY	LOCAL SYSTEM	LOCAL SYSTEM	TOTALS BY COUNTY
	ROAD	BRIDGE	
	PROJECTS	PROJECTS	
	System 80	System 81	
Jefferson		124,286	124,286
Jefferson Davis		0	0
Jones		651,912	651,912
Kemper		139,028	139,028
Lafayette		303,379	303,379
Lamar		12,829	12,829
Lauderdale		25,808	25,808
Lawrence		199,808	199,808
Leake		0	0
Lee		67,934	67,934
Leflore		0	0
Lincoln		841,858	841,858
Lowndes		34,842	34,842
Madison		471,565	471,565
Marion		818,155	818,155
Marshall		664,175	664,175
Monroe		195,542	195,542
Montgomery		632,313	632,313
Neshoba		0	0
Newton		238,211	238,211
Noxubee		380,251	380,251
Oktibbeha		9,181	9,181
Panola		53,602	53,602
Pearl River		510,309	510,309
Perry		166,654	166,654
Pike		289,826	289,826
Pontotoc		89,768	89,768
Prentiss		438,644	438,644
Quitman		245,746	245,746
Rankin	754,713	0	754,713
Scott		175	175

**LOCAL SYSTEM BRIDGE PROGRAM CONSTRUCTION AND ENGINEERING DISBURSEMENTS
BY COUNTY AND SYSTEM FROM JULY 1, 2011 THRU JUNE 30, 2012**

COUNTY	LOCAL SYSTEM	LOCAL SYSTEM	TOTALS BY COUNTY
	ROAD	BRIDGE	
	PROJECTS	PROJECTS	
	System 80	System 81	
Sharkey		3,301	3,301
Simpson		194,290	194,290
Smith		38,150	38,150
Stone		20,577	20,577
Sunflower		685,617	685,617
Tallahatchie		374,429	374,429
Tate		642,122	642,122
Tippah		491,522	491,522
Tishomingo		384,223	384,223
Tunica	43,807	24,781	68,588
Union		275,976	275,976
Walthall		159,579	159,579
Warren		0	0
Washington		612,711	612,711
Wayne		0	0
Webster		136,344	136,344
Wilkinson		174,027	174,027
Winston		0	0
Yalabusha		861,121	861,121
Yazoo		2,278,134	2,278,134
TOTALS BY SYSTEM	2,063,567	23,102,110	25,165,677