



OFFICE OF STATE AID ROAD CONSTRUCTION

MISSISSIPPI DEPARTMENT OF TRANSPORTATION
P. O. BOX 1850
JACKSON, MISSISSIPPI 39215-1850

H. Carey Webb, P.E.
State Aid Engineer
Tele 601-359-7150
www.osarc.state.ms.us

412 Woodrow Wilson Ave.
Jackson, Mississippi 39216
Fax 601-359-7141
mail@osarc.state.ms.us

October 30, 2013

The Honorable Phil Bryant, Governor, and
Members of the Mississippi Legislature

Ladies and Gentlemen:

RE: Annual Report, Office of State Aid Road Construction
Fiscal Year July 1, 2012 thru June 30, 2013

Please accept this letter as notification that the Office of State Aid Road Construction has posted our Fiscal Year 2013 Annual Report on our website. The Office of State Aid Road Construction did not print the Annual Report, but placed it on our website for convenient access. The State Aid Engineer respectfully submits this Annual Report of the Operations of the Office of State Aid Road Construction for Fiscal Year 2013.

Included in the report are operation summaries of the past fiscal year, together with a brief summary of the overall background and functions of the office at the state and county levels. We hope that this information will be of interest and help to the Governor and all members of the Legislature, as well as other individuals concerned with the Office of State Aid Road Construction.

During Fiscal Year 2013, the counties awarded \$143,449,822 in construction contracts. This was comprised of \$95,976,618 for State Aid (SAP) projects, \$33,023,024 for Federal Aid projects [which included \$18,817,591 for Bridge Replacement (BR) projects] and \$14,450,180 for Local System Bridge Program (LSBP) projects.

The State Aid Program continues to contribute to the construction and maintenance of roads and bridges in all counties of the state. Many employment opportunities are provided during the actual construction of State Aid projects.

You may access our FY 2013 Annual Report via our agency website at www.msstateaidroads.us, click on "About State Aid" in the left column, scroll down to the bottom of the page and click on "Fiscal Year 2013 Annual Report" or you may type the following link in your address bar http://www.msstateaidroads.us/downloads/Public/Office_of_State_Aid_Road_Construction-FY_2013_Annual_Report.pdf

If you would like to receive a printed copy of the report please contact Brandi Stuart at 601-359-7133 or by email at bstuart@osarc.state.ms.us.

Your recommendations and continued support of the Office of State Aid Road Construction are greatly appreciated.

Sincerely,

H. Carey Webb, P.E.
State Aid Engineer

HCW:bws

**OFFICE OF STATE AID
ROAD CONSTRUCTION**



**Annual Report
Fiscal Year 2013**

OFFICE OF STATE AID ROAD CONSTRUCTION

SUMMARY ANNUAL REPORT

FOR

THE FISCAL YEAR JULY 1, 2012 TO JUNE 30, 2013

TOGETHER WITH

A PROGRESS REPORT FROM THE BEGINNING OF THE

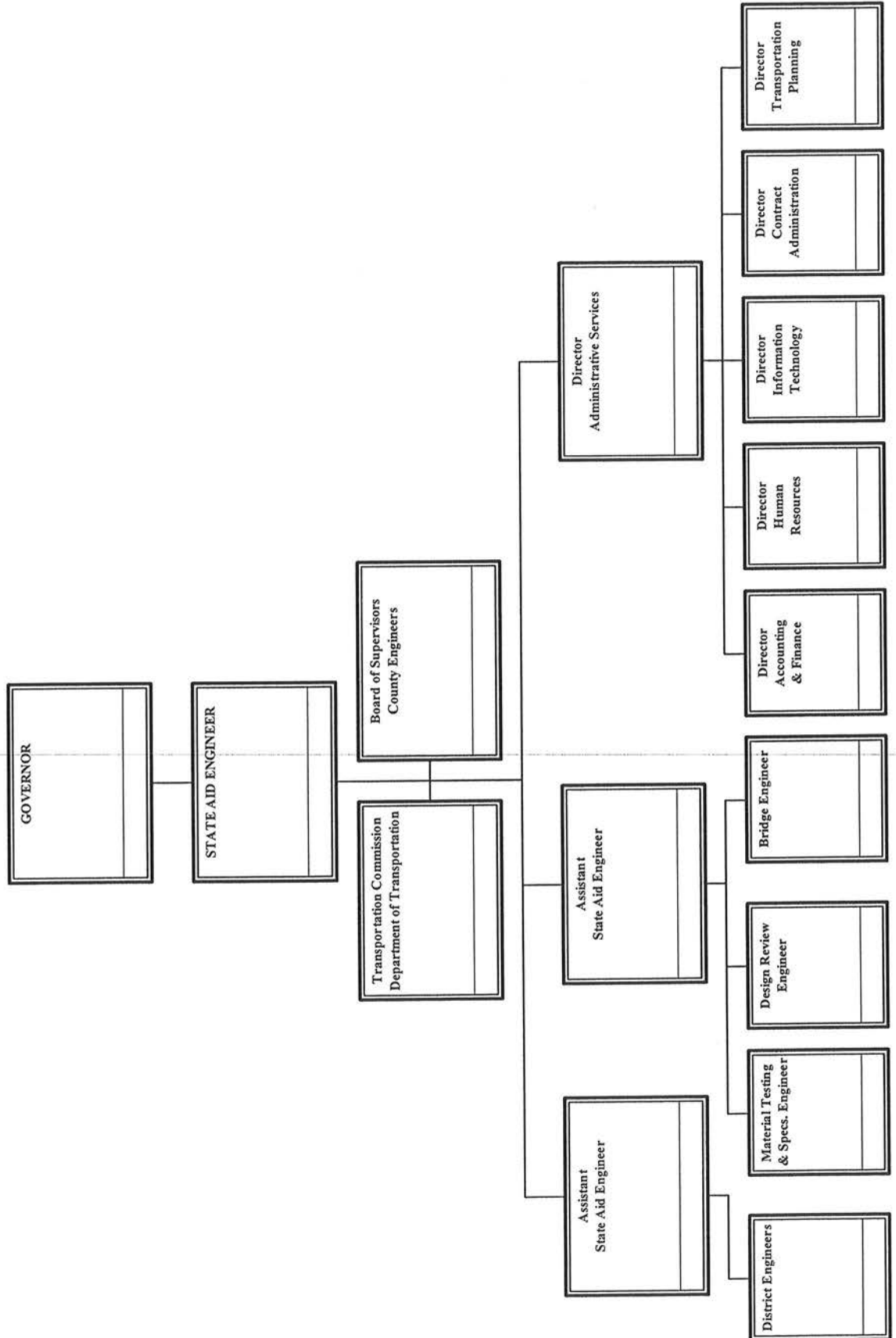
PROGRAM (MAY, 1950) TO JUNE 30, 2013

TABLE OF CONTENTS

	<u>Page</u>
Organizational Chart	1
District Map	2
State Aid Road Program:	
Background of Program	3
Organization of Program	4
Operation of Program	5
Type or Character of Construction and Reseal Programs	6
Progress of Program	7
Revenue Sources and Amounts	12
Receipts and Disbursements	14
Funding Summary	15
Summary of Administrative Expenses	16
Out-of-State Travel to Conventions and Meetings	18
Automobile Expenditures for State-Owned Vehicles	19
Improvements Let to Contract from July 1, 2012 thru June 30, 2013	20
Improvements Made on State Aid System from June, 1950, thru June 30, 2013	22
State Aid Program Construction and Engineering Disbursements from July 1, 2012 thru June 30, 2013	25
Local System Bridge Program Construction and Engineering Disbursements from July 1, 2012, thru June 30, 2013	27

OFFICE OF STATE AID ROAD CONSTRUCTION
ORGANIZATION CHART

Fiscal Year 2013
Annual Report



THE STATE AID ROAD PROGRAM

This report primarily summarizes the operations and progress of the State Aid Program for the fiscal year July 1, 2012 to June 30, 2013.

It is considered appropriate, however, to include an overall background of the program covering the enabling legislation, organization and functions at the State Aid Office and county levels, total funds expended, and total construction improvements accomplished.

An estimate of the program volume anticipated for the fiscal year July 1, 2013 to June 30, 2014 is also included in the report.

BACKGROUND OF PROGRAM

The State Aid Program had its beginning with the passage of Chapter 6, Laws of the Extraordinary Session of 1949 (Section 65-9-[1-33] of the Mississippi Code of 1972). This legislation provided for the creation of a division within the State Highway Department, to be known as the Division of State Aid Road Construction, and to be charged with the responsibility of administering the program at the state level. The 1992 Legislature passed Senate Bill 2763 which created the Mississippi Department of Transportation. Under this bill the State Highway Department became known as the Department of Transportation and the Division of State Aid Road Construction became known as the Office of State Aid Road Construction.

The Enabling Act also provided for a State Aid System, to be composed of the principal collector and distributor routes in the 82 counties, connecting with the State Highway System and other principal county roads to form a network of secondary roads for the state. This system was originally limited to 11,656.4 miles, with each county allocated a percentage of this eligible mileage. The State Legislature at its 1962 Regular Session increased the eligible system mileage to 23,312.8 miles. No change was made in the allocation percentages. In 1994, under House Bill 1302, the allocation percentages were revised and the eligible mileage was increased to 25,857.04 miles. There are 19,042.74 miles actually designated by the Boards and approved by the State Aid Engineer as of June 30, 2013.

The 1994 Regular Session of the Legislature passed House Bill 1302 which included the establishment of a Local System Bridge Replacement and Rehabilitation Program (LSBP), (Section 65-37[1-15] of the Mississippi Code of 1972). The program provides funding for replacement and rehabilitation of deficient bridges maintained by counties or municipalities excluding bridges on the State Aid System, the municipal urban system or the rural major collector system. The Office of State Aid Road Construction is charged with the responsibility of administering the LSBP program under rules and regulations promulgated by the State Aid Engineer.

The 2001 Regular Session of the Legislature passed Senate Bill No. 2318 which established the Local System Road Program (LSRP), (Section 65-18[1-17] of the Mississippi Code of 1972). The program gives the counties the ability to use LSBP and State Aid funds (subject to certain criteria) for the construction, reconstruction and paving of county roads not on the State Aid Road System.

ORGANIZATION OF PROGRAM

Organization of the State Aid Office

The State Aid Enabling Act provides that the Office of State Aid Road Construction be directed by a State Aid Engineer, who is appointed by the Governor for terms of four years each (as amended by the Legislature in 1985). It further provides that the State Aid Engineer hire assistant engineers and other employees necessary to carry out the duties and responsibilities set out in the enabling legislation.

The actual organization of the office began with the appointment of the first State Aid Engineer on May 11, 1950. The office was authorized in 2013 to have an organization for a staff of fifty-four (54) full-time employees, including fourteen (14) Registered Professional Engineers. All positions are approved by the Department of Finance and Administration and the State Personnel Board.

Organization at the County Level

Each Board of Supervisors, as the governing agency of the county, is required by statute to appoint a County Engineer, who is a Registered Professional Engineer, to act for and on behalf of the Board and to administer the engineering functions at the county level, subject to the rules and regulations promulgated by the State Aid Engineer.

The Board is also required to appoint a Local System Bridge Engineer to administer the LSBP program at the county level. The duties of the LSBP Engineer parallel those of the County Engineer and the Board may elect to appoint the County Engineer as the LSBP Engineer.

OPERATION OF THE PROGRAM

Operation of the Program at the County Level

It is the responsibility of the Board of Supervisors to designate the roads to be included in the county's State Aid System; adopt annual construction programs; acquire rights-of-way for State Aid projects; advertise for bids; award contracts; and maintain completed projects after construction.

The County Engineers' responsibilities and duties include, but are not limited to, the following: Assist the Boards of Supervisors in the designation and modification of their State Aid Systems; prepare annual construction programs; make surveys and prepare detailed plans and designs; make field inspections with the State Aid Engineer's representatives; prepare proposals for advertisement for bids; attend lettings at the county level; provide engineering controls (staking, etc.); supervise and inspect construction; prepare estimates for payment to the contractors; and make annual maintenance inspections of completed projects.

Operation of the Program at the State Level

It is the responsibility of the State Aid Engineer and his staff to prepare and adopt uniform design standards and specifications for the construction and maintenance of State Aid projects; approve all additions to the State Aid System; approve all construction programs, plans and specifications; authorize advertisement for bids; concur in the award of the contracts; approve and disburse all payments made from the project fund; approve the final acceptance of completed projects; and make annual and other periodic inspections of completed projects to see that they are properly maintained by the respective Boards of Supervisors.

TYPE OR CHARACTER OF CONSTRUCTION AND RESEAL PROGRAMS

Construction

During the early years of the program (the 1950's), many counties had a great need for bridges and graded roadways with a gravel surface, although many other counties began their State Aid Programs with the construction of hard-surfaced (blacktop) improvements.

It has been the objective throughout the program to construct roads that would connect with the State Highway System and other State Aid routes to form a network of secondary roads. At the present time, all programs now being approved provide for the future completion of a hard-surfaced facility.

The first hard-surfaced State Aid roads, which were completed in the beginning of the program, now need asphalt overlays. It will be noted from the summaries to follow in this report that a total of 3,833.84 miles of hot mix asphalt overlay construction (some surfaces were widened) has been accomplished. This points to the fact that the principal or arterial State Aid roads must now be upgraded to meet increasing traffic volumes and heavier loads. It is anticipated that the need for these betterments on the principal routes will continue to increase.

Maintenance and Reseal Work

The original State Aid Act did not permit the use of State Aid funds for the reseal of existing bituminous surfaces, which work consists of a light application of liquid asphalt and a light application of a fine or seal aggregate to cover the asphalt. Reseal work is regarded as maintenance. The Legislature, during its 1962 Session, amended the law to permit the use of State Aid funds (not to exceed 10%) to reseal hard-surfaced roads which had been constructed through the use of State Aid Funds. This 10% limitation was eliminated during the 1982 Legislative Session.

Bituminous surface treatments need to be resealed on an average of every five or six years to protect the surfaces and the investments made therein. A total of 32,657.62 miles have been resealed, with 3,561.18 miles of this total being contracted during the 2013 fiscal year.

The Legislature, during the 1982 Regular Session, amended Section 65-9-25 of the Mississippi Code of 1972 to permit additional State Aid funds to be used for maintenance, repair and reconstruction of State Aid roads which have been constructed in accordance with State Aid standards and specifications.

The greater majority of State Aid funds in recent years have been used for reseals, pavement maintenance and bridges, with only the remaining funds available for new construction. Some of the older routes that were built in the 1950's and 1960's were constructed to 57,650 pounds. These routes are now being reclaimed to support greater loads and traffic necessary for the agriculture and forestry industries, as well as for the travelling public.

PROGRESS OF PROGRAM**Projects Placed Under Contract from July 1, 2012 thru June 30, 2013**

	#	Miles	Cost
LSBP Projects (50 Bridges Replaced)	44	5.488	14,450,180
LSRP (LSBP Funds)	0	0.000	0
LSRP (SA Funds)	3	0.999	643,200
Total LSBP and LSRP Projects (LSBP & SA Funds)	<u>47</u>		<u>15,093,380</u>
State Aid & Federal Aid Projects (including Bridge Inspections)			
Construction			
Grading, Drainage Structures & Paving		167.331	
Grading, Drainage Structures & Gravel Surface		18.197	
Bridges		21.186	
Asphalt Overlay Construction		739.756	
Total Construction Improvements	64	<u>946.470</u>	46,692,291
Reseal & Maintenance Projects (Previously Paved State Aid Routes)	81	3,561.184	81,664,151
Total State Aid & Federal Aid Project (including Bridge Inspections)	<u>145</u>		<u>128,356,442</u>

NOTE: The above totals, by Counties, are included elsewhere in this report.

Amounts and Types of Funds Contracted:

State Aid	94,460,218
County	873,200
Federal Funds:	
MDOT Funds	0
Surface Transportation	4,565,084
DECD/Federal Match	759,540
Appalachian Access	0
Bridge Replacement	18,817,591
Bridge Inspection	0
Eastern Federal Land Highway (EFLH)	722,500
Emergency Relief	0
High Priority	4,867,669
High Risk Rural Road (HRRRP)	1,540,640
National Corridor Planning & Development (NCPD)	0
Public Lands Highway (PLH)	1,750,000
Transportation-Community-System Preservation (TCSP)	0
Total Funds Contracted	<u>128,356,442</u>
Grand Total all Projects	<u>143,449,822</u>

Projects Completed and/or Placed Under Contract from Beginning of Program in June, 1950, thru June 30, 2013

	#	Miles	Cost
LSBP Projects (1,793 Bridges Replaced)	1,085	183.238	327,001,353
LSRP (LSBP Funds)	8	20.963	6,551,000
LSRP (SA Funds)	<u>19</u>	<u>18.268</u>	<u>7,755,160</u>
 Total LSBP and LSRP Projects (LSBP & SA Funds)	 <u>1,112</u>		 <u>341,307,513</u>
State Aid & Federal Aid Project (including Bridge Inspections)			
Construction			
Grading, Drainage Structures & Paving		11,101.233	
Grading, Drainage Structures & Gravel Surface		848.757	
Bridges		129.567	
Asphalt Overlay Construction		3,833.835	
Total Construction Improvements	8,606	<u>15,913.392</u>	2,265,124,536
Reseal & Maintenance Projects (Previously Paved State Aid Routes)	<u>1,675</u>	<u>32,657.619</u>	<u>712,401,308</u>
 Total State Aid & Federal Aid Project (including Bridge Inspections)	 <u>10,281</u>		 <u>2,977,525,844</u>
 Grand Totals all Projects	 <u>11,393</u>		 <u>3,318,833,357</u>

NOTE: The above totals, by Counties, are included elsewhere in this report.

Projects in Contract Stage as of June 30, 2013

	#	Miles	Cost
LSBP Projects	68	7.052	21,911,156
LSRP (LSBP Funds)	1	1.390	1,247,700
LSRP (SA Funds)	5	3.785	2,548,800
Total LSBP and LSRP Projects (LSBP & SA Funds)	74		25,707,656
State Aid Projects (State Aid Funds):			
Construction	25	24.510	15,051,400
Maintenance	44	364.600	35,237,923
Reseal	39	999.440	50,655,052
Federal Aid Projects (State Aid , Federal & LSBP Funds):			
Surface Transportation	15	86.321	8,132,100
STPG	3	6.198	991,000
Appalachian Access	1	0.053	214,750
Bridge Replacement	32	10.818	37,733,504
Bridge Inspection	4	0.000	11,100,428
Eastern Federal Land Highway (EFLH)	6	0.592	2,470,364
Emergency Relief	2	1.441	2,573,253
High Priority	29	91.665	46,103,202
High Risk Rural Road (HRRRP)	10	47.795	3,216,386
Public Land Highways	2	10.390	4,697,803
Total State Aid & Federal Aid Projects	212	1,643.823	218,177,165
Grand Totals all Projects	286	1,656.050	243,884,821

Estimated Program Volume for July 1, 2012, thru June 30, 2013

It is difficult to estimate the miles of construction and reseal improvements that will be let to contract during the coming fiscal year. However, the State Aid Road Construction Program has the potential for a \$100 to \$200 million total program for the fiscal year 2013. In addition, we expect to place under contract \$20 million in LSBP Funds.

As of June 30, 2013, programs (proposed improvements) have been adopted by the Boards of Supervisors and approved by the State Aid Engineer for the following work:

Type of Projects	Number of Projects	Estimated Cost
Total LSBP (System 81)	165	\$59,129,455
Total LSRP (LSBP Funds)(System 80)	0	\$0
Total LSRP (SA Funds)(System 80)	3	\$1,043,700
State Aid: (State Aid Funds Only)		
Construction (System 81)	46	\$25,117,066
Maintenance (System 81)	45	\$30,806,138
Reseal (System 81)	20	\$19,770,926
State Aid & Federal Aid Funds		
STP (System 82)	67	\$54,315,286
STPG (System 32)	0	\$0
APL (System 36)	2	\$894,900
BR (System 85)	60	\$63,558,541
EFLH (System 63)	7	\$3,311,988
ER (System 66)	10	\$620,228
HRRRP (System 25)	9	\$3,453,865
MS, FBD (System 19)	33	\$124,600,512
PLH (System 62)	2	\$1,133,945
GRAND TOTAL	469	\$387,756,550
Total State Aid	301	\$327,583,395

The Boards of Supervisors began the new four-year term on January 1, 2012, and have available for planning and expenditure purposes 90% of the State Aid revenue that will accrue during the 2012-2015 period.

Bridge Replacement and Rehabilitation is a major Federal program that has helped the counties to improve the seriously deficient condition of many State Aid and Federal Aid System bridges. Historically, the Mississippi Department of Transportation transferred approximately 30% of the Bridge Replacement funds that are apportioned to the State Aid program for replacement of deficient bridges on county roads. In fiscal year 2013, \$17,082,191 was authorized. State Aid is projected to receive for fiscal year 2014, \$15,000,000 to be transferred by Mississippi Department of Transportation.

The cost per mile for the construction of projects, embracing grading, drainage structures, small bridges, base and bituminous surfacing, ranges from \$453,664.77 per mile to \$2,527,838.83 per mile, depending on the soil conditions, availability of construction materials and terrain. The average cost of construction projects in fiscal year 2013 was \$877,926.02 per mile.

Projects involving large bridges with long spans and/or projects requiring higher design standards because of heavy traffic demands or other special conditions should not be considered in these cost ranges.

Liquid seal (resealing) projects range from \$21,017.13 to \$84,293.85 per mile, depending on the location and on the leveling and base course corrections needed. The average cost of reseal projects in fiscal year 2013 was \$50,791.41 per mile.

REVENUE SOURCES AND AMOUNTS

Revenues for the State Aid Program are derived from the following state and federal sources:

State Sources:

- (a) Section 27-65-75, Mississippi Code of 1972 (as amended by the 1994 and 1999 Regular Sessions of the Legislature), provides for a minimum diversion of \$48,000,000 or 23.25%, whichever is greater, from gasoline, diesel fuel or kerosene tax revenue and \$3,000,000 from sales tax collections into the Office of State Aid Road Construction special fund in each fiscal year for the State Aid program.

State Aid funds have been constant since 1995, although construction costs have risen 40%, resulting in counties having a difficult time maintaining their State Aid system to keep up with the increase in traffic and weight of loads. If roads are not properly maintained as they get older, it will be costlier to keep these roads at a level of satisfactory maintenance to ensure safe and efficient conveyance of goods and services.

- (b) Mississippi Code of 1972, Section 65-37-13 (c) provided that the Local System Bridge Replacement and Rehabilitation Fund be appropriated \$20 million from the General Fund, if the General Fund revenues reflect a growth of 2% or more for the succeeding fiscal year. Mississippi Code Section 65-37-13 also extended the Local System Bridge Replacement and Rehabilitation Program through 2016 and provides for LSBP funds to be issued to each county as advanced credits. Advanced credits allow each county to plan bridge repair or replacement projects and to utilize LSBP funds on hand to the fullest practicable extent at all times. These advanced credits are based upon anticipated revenue and can be issued by the county board term, which is four years. On January 1, 2012 advanced credits were issued at \$20 million per year for four fiscal years ending December 31, 2015.

In Fiscal Years 2004 through 2012 the LSBP program was funded with bond proceeds. House Bill 19, Regular Legislative Session 2013 provided for \$20 million of Budget Contingency Funds to be appropriated for the LSBP Program, for the period upon passage through June 30, 2014.

The LSBP fund earned interest on bond fund treasury accounts in the amount of \$234,985.78 for FY 2013.

- (c) Section 65-9-17 authorizes the counties to use County funds to supplement State Aid funds for the construction of State Aid roads.

- (d) The Economic Development Highway Act (Code Section 65-4-1) authorizes the Mississippi Development Authority (MDA) to assist political subdivisions with Highway Projects which encourage private companies to engage in high economic benefit projects within their area. These funds are made available to the county(ies) or municipality(ies) on an individual project basis and are administered in accordance with guidelines established by the MDA. The Office of State Aid is responsible for administering MDA projects that are not on the State Highway System.

Federal Sources (Regular):

MDOT provides a portion of the Surface Transportation Program funds under MAP-21, which includes Bridge Replacement funds made available to the State of Mississippi by the Federal Government to the counties through the State Aid Office.

Federal Sources (Special):

- (a) Emergency Relief funds are made available by the Federal Government to the counties through the State Aid Office on an individual project basis, to reconstruct roads and bridges on Federal Aid highways damaged or destroyed by floods, hurricanes, catastrophic failure and other disasters.
- (b) Appalachian Access Highway funds are made available to the counties in the twenty-four county Appalachian area in northeast Mississippi on an individual project basis. These projects are administered by the State Aid Office on an individual project basis through the Federal Highway Administration.
- (c) Other funds earmarked by Congress for selected counties.

RECEIPTS AND DISBURSEMENTS

	Actual FY Ending 6/30/2013	Estimated FY Ending 6/30/2014	Estimated FY Ending 6/30/2015
DISBURSEMENTS			
Construction of Highways			
State Aid Projects	46,356,022	80,145,731	80,145,731
Federal Aid Projects	44,690,736	70,000,000	70,000,000
Local System Bridge Program	14,828,113	20,000,000	20,000,000
General Fund	0	0	40,000,000
Budget Contingency Fund	0	20,000,000	0
Administrative	3,995,701	5,068,541	5,068,541
Total Expenditures-OSARC	109,870,572	195,214,272	215,214,272
RECEIPTS			
Gasoline Tax(Section 27-65-75)	46,823,160	57,000,000	57,000,000
Sales Tax(Section 27-65-75)	3,000,000	3,000,000	3,000,000
County Contributions	730,985	19,885,731	19,885,731
Misc State Aid Revenue	4,635	10,000	10,000
Local System Bridge Program	0	20,000,000	20,000,000
Interest on Investments	234,986	250,000	250,000
Administrative	5,371,500	5,068,541	5,068,541
Budget Contingency Fund (LSBP)	0	20,000,000	0
General Fund (LSBP)	0	0	40,000,000
Total State Revenue-OSARC	56,165,266	125,214,272	145,214,272
Federal Funds(Allocations)Reimbursements			
FHWA Reimbursements	31,089,870	55,000,000	55,000,000
Federal Aid Matching Requirements	3,749,993	15,000,000	15,000,000
Total Federal Funds-OSARC	34,839,863	70,000,000	70,000,000
Total Revenue	91,005,129	195,214,272	215,214,272
Beginning Funds Balance	64,958,174	46,092,731	46,092,731
Ending Funds Balance	46,092,731	46,092,731	46,092,731
Total Available	109,870,572	195,214,272	215,214,272

FUNDING SUMMARY

FUNDS MADE AVAILABLE DURING FY 2013

Sources:

Gasoline Tax (Section 27-65-75)	52,194,660	
Sales Tax (Section 27-65-75)	3,000,000	
County Contributions	730,985	
Federal Aid Matching Requirements	3,749,993	
Interest on Investments	234,986	
Miscellaneous Revenue	4,635	
Administrative Transfer from Counties	5,371,500	
Proceeds from the Sale of Bonds	0	
Federal Funds--		
FHWA Reimbursements	31,089,870	
Total Federal Funds	<u>31,089,870</u>	
Total Fiscal Year Revenue		96,376,629
Less: Requirements for Administrative Expenses		<u>(5,371,500)</u>
Total Funds Made Available for Construction During FY 2013		<u>91,005,129</u>

PROJECTION OF REVENUE FOR FY 2014 AND FY 2015

Sources:	<u>FY 2014</u>	<u>FY 2015</u>
Gasoline Tax (Section 27-65-75)	57,000,000	57,000,000
Sales Tax (Section 27-65-75)	3,000,000	3,000,000
County Contributions	19,885,731	19,885,731
Federal Aid Matching Requirements	55,000,000	55,000,000
Miscellaneous State Aid Revenue	10,000	10,000
Local System Bridge Funds	40,000,000	60,000,000
Interest on Investments	250,000	250,000
Administrative Transfer from Counties	5,068,541	5,068,541
Federal Funds - FHWA Reimbursements	15,000,000	15,000,000
Total Fiscal Year Revenue	<u>195,214,272</u>	<u>215,214,272</u>
Less: Requirements for Administrative Expenses	<u>(5,068,541)</u>	<u>(5,068,541)</u>
Total Revenue Available for Construction	<u>190,145,731</u>	<u>210,145,731</u>

SUMMARY OF ADMINISTRATIVE EXPENSES

Salaries, Wages and Fringe Benefits:

Salaries and Wages	2,316,058	
Personal Leave Pay	9,714	
Retirement Matching	331,623	
Social Security Matching	168,773	
Workers' Compensation	1,719	
Group Health Insurance	204,166	
Group Life Insurance	5,250	
Unemployment Insurance Tax	5,964	
Cafeteria Plan	3,178	3,046,445

Travel:

In-State	27,711	
Out-of-State	11,904	39,615

Contractual Services:

Tuition & Employee Training	16,334	
Liability Insurance Contributions	10,918	
Postage	20,000	
Freight	240	
Advertising	387	
Rents	16,258	
Repairs to Motor Vehicles	7,760	
Consultant Fees	8,000	
Engineering Services	94,500	
SAAS	5,281	
MMRS	6,724	
Audit Department	36,881	
State Personnel Board	7,398	
Temporary Employment Fees	15,832	
Fidelity Bonds	5,300	
Membership Dues	55	
Prior Year Expense	946	
Other Fees & Services	23,597	276,412

Information Technology:

IS Professional Fees - Outside Vendor	473,377	
ITS Fees	3,046	
Service Fees to State Computer Center	3,565	
Software Acquisition	16,788	
Network Charges	10,424	
Telephone Fees	14,143	
Long Distance	2,855	
Usage Time Cellular Telephones	15,101	539,299

SUMMARY OF ADMINISTRATIVE EXPENSES

Commodities:

Printing and Binding	2,114	
Duplication Supplies	5,519	
Office Supplies and Materials	11,531	
Paper Supplies	1,923	
Maps and Manuals	177	
Office Equipment	5,699	
Fuel Card - Gas, Oils, Greases, Etc.	29,746	
Tires and Tubes - Auto	1,470	
Repairs to Motor Vehicles	3,232	
Prior Year Expense	1,240	
Batteries & Accessories for Vehicles	167	
Other Miscellaneous Expenses	3,026	
Procurement Card Purchases	2,681	68,525

Capital Outlay:

Office Furniture & Fixtures	4,685	
Mainframe Systems Equipment	20,720	25,405

Total

3,995,701

OUT-OF-STATE TRAVEL TO CONVENTIONS AND MEETINGS

Employee's Name	Travel Destination	Travel Meeting Title	Total Amount
Bond, John Ferris Jr	Detroit, MI	AASHTO National Civil Rights Symposium	\$ 1,164.00
Bridges, Joel S.	Charleston, SC	SASHTO Conference	\$ 1,015.00
Cooper, Kimberly Renee	Detroit, MI	AASHTO National Civil Rights Symposium	\$ 1,166.00
Cooper, Kimberly Renee	Mobile, AL	AASHTO HR Conference	\$ 892.00
Davis, Charles W	Charleston, SC	SASHTO Conference	\$ 2,447.00
Jackson, James D.	Pittsburgh, PA	AASHTO Annual Meeting	\$ 709.00
Jordan, Daniel J.	Mobile, AL	AASHTO HR Conference	\$ 950.00
Mohr, Sandra Lynn	Detroit, MI	AASHTO National Civil Rights Symposium	\$ 1,163.00
Webb, H. Carey	Atlanta, GA	FHWA EDC Summit	\$ 1,474.00
Webb, H. Carey	Charleston, SC	SASHTO Conference	\$ 924.00
GRAND TOTAL			<u>\$ 11,904.00</u>

AUTOMOBILE EXPENDITURES FOR STATE-OWNED VEHICLES

Make/Model	Year	Tag #	Cost	Use	Operating Expenses	Annual Mileage	Total Mileage
Ford/Taurus	2005	G32905	\$ 12,396.00	Administrative Pool Car	\$ 326.89	1,755	94,446
Ford/Crown Victoria	2005	G32908	\$ 19,288.00	State Aid Engineer	\$ 564.05	5,548	129,373
Chevrolet/Malibu	2007	G42494	\$ 14,990.00	Southeast District Engineer	\$ 186.73	2,112	117,920
Chevrolet/Impala	2008	G44301	\$ 15,800.00	Central District Engineer	\$ 1,525.09	14,844	108,894
Chevrolet/Impala	2009	G50967	\$ 16,679.00	Southwest District Engineer	\$ 2,989.33	27,717	128,016
Nissan/Titan	2009	G51350	\$ 23,756.00	Bridge Division Pool Car	\$ 1,569.51	7,999	41,383
Nissan/Titan	2009	G51349	\$ 23,756.00	Bridge Division Pool Car	\$ 2,009.77	10,657	45,265
Chevrolet/Impala	2010	G52757	\$ 17,291.00	Pool Car	\$ 113.76	874	76,420
Chevrolet/Impala	2010	G52756	\$ 17,291.00	Delta District Engineer	\$ 2,431.17	21,036	86,460
Chevrolet/Impala	2010	G52758	\$ 17,291.00	Northeast District Engineer	\$ 5,686.96	50,623	177,568
Chevrolet/Impala	2011	G57409	\$ 17,291.00	North Central District Engineer	\$ 3,279.81	27,851	67,133
Ford/F150	2011	G57577	\$ 20,389.00	East Central District Engineer	\$ 5,947.66	39,866	68,586
Chevrolet/Impala	2012	G22832	\$ 17,555.00	South Central District Engineer	\$ 183.17	19,192	37,290

IMPROVEMENTS LET TO CONTRACT FROM JULY 1, 2012 THRU JUNE 30, 2013

County	Construction Miles and Cost						Reseal & Maintenance		
	Grading & Surfacing		Bridges		Resur-facing	Total Miles	Cost	Miles	Cost
Adams	1.249	0.620	-	-	-	1.869		22.693	175,300
Alcorn	5.231	0.374	8	0.328	-	5.933	2,546,500	59.697	
Amite	1.638	-	5	0.403	41.678	43.719		38.017	
Attala	0.723	0.501	11	0.432	34.486	36.142		67.646	
Benton	3.110	0.138	7	0.438	-	3.686	650,700	30.279	1,287,400
Bolivar	4.499	0.164	2	0.063	-	4.726	375,600	40.859	1,585,600
Calhoun	0.146	0.231	3	0.052	-	0.429	675,000	62.796	463,800
Carroll	0.161	0.218	6	0.487	46.856	47.722		46.454	
Chickasaw	4.977	0.036	2	0.117	-	5.130		18.061	980,952
Choctaw	0.219	0.163	4	0.127	-	0.509	1,592,800	52.882	1,612,000
Claiborne	1.636	-	-	-	5.180	6.816		22.698	
Clarke	0.532	0.072	4	0.139	-	0.743	554,500	43.676	2,536,000
Clay	0.166	0.530	6	0.500	16.828	18.024	1,080,000	33.534	1,666,500
Coahoma	0.605	-	-	-	7.604	8.209		24.293	
Copiah	0.199	0.376	6	0.621	62.473	63.669		-	2,770,200
Covington	1.250	0.237	7	0.182	3.910	5.579	698,300	26.633	
DeSoto	0.738	-	3	0.033	6.859	7.630		7.029	
Forrest	0.096	-	1	0.017	11.594	11.707	783,700	43.941	2,246,400
Franklin	4.564	0.417	4	0.423	-	5.404		41.088	
George	0.797	0.089	3	0.094	-	0.980	1,876,300	41.448	1,996,900
Greene	-	0.055	3	0.181	18.989	19.225		0.318	2,239,300
Grenada	0.964	-	-	-	-	0.964		64.232	
Hancock	-	-	1	0.123	31.054	31.177		6.550	
Harrison	0.330	0.093	8	0.169	19.984	20.576	1,161,400	32.228	3,950,000
Hinds	0.981	0.128	11	0.494	17.678	19.281		89.588	
Holmes	0.052	0.160	3	0.300	34.744	35.256	611,900	0.074	1,538,500
Humphreys	4.069	0.018	3	0.527	3.558	8.172	890,700	0.124	474,200
Issaquena	-	-	-	-	-	-		5.003	
Itawamba	0.336	-	7	0.375	6.649	7.360		71.947	
Jackson	0.223	-	2	0.054	-	0.277	258,700	20.866	1,903,700
Jasper	2.870	0.117	8	0.186	-	3.173	2,737,100	0.046	1,117,500
Jefferson	0.655	0.331	4	0.159	2.443	3.588		39.899	590,700
Jefferson Davis	0.561	-	3	0.077	-	0.638		105.093	1,301,700
Jones	1.060	-	6	0.402	10.106	11.568	1,164,000	196.627	2,247,700
Kemper	1.746	1.982	5	0.131	-	3.859		86.654	
Lafayette	1.327	0.392	12	1.587	4.392	7.698	2,734,200	18.294	683,499
Lamar	0.184	-	2	0.095	24.891	25.170	4,382,300	31.219	1,983,000
Lauderdale	2.004	-	10	0.635	-	2.639		4.543	
Lawrence	5.641	0.237	9	1.146	7.549	14.573		56.627	1,271,600
Leake	0.117	-	2	0.487	22.700	23.304		54.436	2,197,700
Lee	1.890	-	5	0.537	-	2.427	1,085,200	0.454	290,600
Leflore	-	-	-	-	2.940	2.940		50.830	1,862,000
Lincoln	11.201	0.467	6	0.125	1.335	13.128	825,000	134.518	2,115,500
Lowndes	10.015	0.525	3	0.052	0.470	11.062		86.867	2,081,300
Madison	0.496	0.166	4	0.080	5.147	5.889		8.022	
Marion	2.159	0.238	1	0.045	-	2.442		0.179	1,062,300

IMPROVEMENTS LET TO CONTRACT FROM JULY 1, 2012 THRU JUNE 30, 2013

County	Construction Miles and Cost						Reseal & Maintenance		
	Grading & Surfacing		Bridges		Resur-facing	Total Miles	Cost	Miles	Cost
Marshall	7.872	0.252	4	0.120	2.451	10.695		97.860	1,247,600
Monroe	0.920	0.141	4	0.180	10.945	12.186		48.105	
Montgomery	-	0.529	5	0.349	2.069	2.947	1,870,800	6.642	816,100
Neshoba	3.078	-	4	0.124	-	3.202	280,700	55.328	1,875,000
Newton	0.342	0.072	5	0.114	-	0.528	424,000	62.688	1,372,400
Noxubee	-	0.110	1	0.026	-	0.136	387,700	47.010	1,120,600
Oktibbeha	2.929	-	-	-	9.509	12.438		67.855	1,396,000
Panola	0.320	0.174	9	0.645	2.524	3.663		73.441	1,504,100
Pearl River	1.507	0.072	13	0.425	5.109	7.113	431,091	118.776	978,600
Perry	9.747	0.070	7	0.208	-	10.025	1,345,500	34.691	
Pike	1.484	0.115	5	0.467	-	2.066		75.480	2,421,000
Pontotoc	1.254	0.651	4	0.120	-	2.025	40,400	24.660	452,300
Prentiss	1.010	-	6	0.215	7.258	8.483		14.357	596,900
Quitman	0.546	0.030	1	0.017	9.151	9.744		-	998,800
Rankin	6.297	-	-	-	73.595	79.892		-	5,917,100
Scott	0.196	0.612	4	0.753	-	1.561		65.403	
Sharkey	-	0.151	1	0.018	3.854	4.023		7.038	
Simpson	8.264	0.245	3	0.292	1.893	10.694	2,483,700	75.056	126,100
Smith	1.359	0.670	7	0.147	-	2.176		36.372	1,137,200
Stone	2.157	-	4	0.050	7.263	9.470	558,900	54.964	1,574,700
Sunflower	4.395	0.014	4	0.359	3.612	8.380	3,104,500	50.667	
Tallahatchie	6.174	0.151	2	0.228	3.650	10.203	477,900	11.797	1,957,400
Tate	0.126	0.145	7	0.249	-	0.520	319,600	11.729	
Tippah	1.567	0.118	5	0.433	-	2.118	919,400	60.862	1,492,100
Tishomingo	0.032	0.030	4	0.040	3.050	3.152		43.319	997,700
Tunica	0.052	-	2	0.047	-	0.099		9.221	
Union	0.169	-	2	0.156	-	0.325	764,400	64.214	
Walthall	0.031	0.054	4	0.353	59.710	60.148		80.810	971,500
Warren	3.114	-	6	0.650	-	3.764		6.128	333,800
Washington	0.770	0.360	9	0.554	10.246	11.930	769,000	-	
Wayne	0.087	0.155	2	0.025	67.704	67.971	686,000	55.999	2,679,900
Webster	0.354	0.333	7	0.295	-	0.982	419,800	66.224	1,495,900
Wilkinson	0.096	0.480	4	0.223	-	0.799		49.917	
Winston	7.511	3.081	9	0.281	4.066	14.939	2,929,400	59.516	
Yalobusha	0.127	0.081	4	0.389	-	0.597	824,800	35.563	
Yazoo	12.027	0.226	4	0.212	-	12.465	970,800	100.530	
Statewide									
Totals	167.331	18.197	362	21.186	739.756	946.471	46,692,291	3,561.184	79,694,651

IMPROVEMENTS MADE ON THE STATE AID SYSTEM FROM JUNE 30, 1950, THRU JUNE 30, 2013

County	State Aid Mileage			State Aid Improvements							Funds Expended or Obligated To Contact	
	Total Allocation	Actually Designated	Paved Mileage	Grading & Grav. Surf.	Brs. Structural #	Total Actual Miles		Overlay or Resurf.	Total Construction	Surfacing Reseal/Maint.	Construction	Reseal/Mant.
						Miles	Miles					
Adams	244.42	192.6	48.436	1.362	19	0.604	50.402	37.698	88.100	139.828	22,424,141	2,952,756
Alcorn	280.16	185.1	117.431	2.162	56	1.285	120.878	27.107	147.985	322.529	22,849,976	9,283,121
Amite	398.65	245.35	191.143	3.889	56	1.742	196.774	96.894	293.668	622.345	32,307,764	9,845,745
Attala	345.03	250.85	145.107	9.208	73	1.952	156.267	34.486	190.753	602.856	31,424,903	7,931,898
Benton	205.57	168.6	105.135	9.702	39	1.047	115.884	-	115.884	201.347	18,124,670	4,113,102
Bolivar	339.41	202.7	105.850	7.281	48	0.937	114.068	80.137	194.205	248.346	27,279,054	7,134,849
Calhoun	321.72	216.15	129.343	15.969	94	1.684	146.996	47.753	194.749	518.875	30,936,353	6,562,283
Carroll	300.74	234.12	110.251	13.243	72	1.906	125.400	92.912	218.312	347.281	23,369,332	8,988,212
Chickasaw	247.19	194.08	109.947	15.389	67	1.434	126.770	0.463	127.233	325.723	19,837,077	5,873,093
Choctaw	235.68	199.7	111.992	30.632	87	1.602	144.226	0.225	144.451	380.416	21,054,028	8,826,006
Claiborne	240.12	158.48	94.272	10.000	25	1.202	105.474	91.931	197.405	244.529	23,981,088	6,513,477
Clarke	370.67	286.9	206.547	0.934	58	1.658	209.139	32.970	242.109	713.510	29,108,156	10,555,958
Clay	223.9	164.3	97.134	10.255	70	2.003	109.392	47.358	156.750	311.478	33,255,055	7,462,347
Coahoma	340.37	216.1	151.098	1.345	27	0.793	153.236	167.866	321.102	366.866	26,594,252	5,084,101
Copiah	442.94	387.7	240.538	4.791	112	3.275	248.604	85.778	334.382	645.405	44,606,937	10,616,275
Covington	289.12	223.8	147.437	2.581	80	2.510	152.528	13.904	166.432	587.549	25,837,412	9,402,451
DeSoto	345.17	197.4	100.545	20.603	51	0.981	122.129	36.685	158.814	168.385	31,324,617	9,778,975
Forrest	319.89	261.2	63.903	5.608	71	2.122	71.633	85.944	157.577	354.508	26,311,190	9,338,005
Franklin	398.65	225.88	163.139	1.397	43	2.019	166.555	37.215	203.770	453.142	31,018,874	8,775,854
George	258.73	177.3	124.746	5.299	50	1.207	131.252	11.302	142.554	335.003	20,967,979	9,349,287
Greene	412.64	290.2	207.278	9.604	93	2.268	219.150	58.250	277.400	458.183	38,739,594	8,577,480
Grenada	214.27	165.28	102.065	1.914	31	0.740	104.719	25.741	130.460	459.199	32,172,069	7,410,014
Hancock	251.92	163.2	96.943	10.139	42	0.798	107.880	51.455	159.335	189.897	38,022,364	7,575,616
Harrison	414.63	264.6	134.052	1.964	55	2.053	138.069	42.171	180.240	414.321	46,722,647	9,591,610
Hinds	440.95	359	248.503	1.632	47	1.778	251.913	105.198	357.111	331.789	43,536,298	8,915,129
Holmes	445.27	322.4	222.537	18.541	63	1.710	242.788	100.767	343.555	679.125	35,149,551	11,426,224
Humphreys	223.26	204.9	115.086	16.243	35	1.103	132.432	10.701	143.133	253.559	17,559,876	6,852,369
Issaquena	128.89	91.1	36.131	21.852	7	0.161	58.144	28.007	86.151	105.077	6,572,316	4,734,432

IMPROVEMENTS MADE ON THE STATE AID SYSTEM FROM JUNE 30, 1950, THRU JUNE 30, 2013

County	State Aid Mileage			State Aid Improvements							Funds Expended or Obligated	
	Total Allocation	Actually Designated	Paved Mileage	Grading & Grav. Surf.	Brs. Structural #	Total Actual Miles		Overlay or Resurf.	Total Construction	To Contact		
						Miles	Miles			Construction	Reseal/Maint.	
Itawamba	326.98	222.35	161.287	6.298	86	2.068	169.653	20.088	189.741	403.828	29,279,071	6,732,968
Jackson	351.66	146.3	60.416	6.723	30	1.432	68.571	7.893	76.464	108.856	28,078,927	7,687,410
Jasper	307.73	291.4	175.487	4.395	82	2.036	181.918	26.025	207.943	387.182	30,091,156	6,713,250
Jefferson	221.47	189.39	75.461	6.676	48	1.207	83.344	23.699	107.043	315.891	15,841,617	8,299,677
Jefferson Davis	251.58	162.83	113.336	3.829	57	1.310	118.475	46.999	165.474	464.987	20,490,726	7,736,908
Jones	502.2	329.3	179.653	30.507	82	2.660	212.820	59.545	272.365	718.951	40,747,319	12,800,689
Kemper	382.33	288.35	206.962	32.665	90	1.687	241.314	29.968	271.282	447.422	31,210,780	6,956,048
Lafayette	341.95	186.25	109.343	8.802	109	3.464	121.609	35.438	157.047	355.393	30,085,499	7,834,253
Lamar	318.1	207.78	110.567	1.474	53	1.615	113.656	112.341	225.997	508.670	29,007,749	10,011,740
Lauderdale	439.39	412.3	248.922	1.619	71	1.942	252.483	96.368	348.851	466.253	30,391,484	8,459,098
Lawrence	261.1	207.72	125.901	8.414	67	2.553	136.868	73.548	210.416	456.453	51,469,919	7,347,771
Leake	296.54	223.33	146.905	11.073	62	1.942	159.920	38.697	198.617	387.453	30,673,045	6,597,869
Lee	343.24	194.4	109.705	17.876	76	1.977	129.558	19.648	149.206	357.368	32,393,140	11,423,646
Leflore	311.14	275.9	134.409	5.456	59	2.585	142.450	9.928	152.378	572.890	29,413,265	10,419,670
Lincoln	433.62	358.8	209.016	4.654	74	1.950	215.620	32.931	248.551	635.983	45,701,627	9,933,352
Lowndes	334.88	203.2	122.257	7.491	63	1.377	131.125	119.007	250.132	377.376	33,319,057	7,793,687
Madison	369.85	285.3	154.941	3.518	59	1.433	159.892	57.271	217.163	429.229	29,280,393	7,910,239
Marion	331.94	286.1	185.490	4.076	63	1.271	190.837	92.845	283.682	607.402	23,087,090	9,218,672
Marshall	315.61	211	123.760	8.683	44	1.602	134.045	13.985	148.030	277.673	39,208,010	6,587,738
Monroe	328.95	203.7	143.269	7.595	49	1.084	151.948	37.745	189.693	404.947	27,183,368	9,220,123
Montgomery	251.78	210.85	89.916	24.752	85	1.858	116.526	12.498	129.024	286.416	23,034,981	7,954,554
Neshoba	377.67	312.2	185.980	34.354	91	1.638	221.972	9.884	231.856	448.031	31,480,088	9,075,892
Newton	296.86	273	170.733	6.476	72	1.162	178.371	12.234	190.605	381.285	25,258,223	7,366,948
Noxubee	317.05	222	127.970	6.607	57	1.151	135.728	19.013	154.741	379.604	25,194,560	5,895,890
Oktibbeha	285.13	208.8	134.308	10.305	24	0.411	145.024	30.737	175.761	476.003	22,869,885	6,882,287
Panola	380.4	250.4	157.748	6.586	63	1.819	166.153	116.497	282.650	485.831	34,521,485	6,425,967
Pearl River	410.01	242	147.493	14.349	72	2.209	164.051	49.026	213.077	652.398	33,761,828	11,692,120
Perry	286.75	226.5	97.467	6.110	69	1.671	105.248	32.700	137.948	442.908	27,036,666	8,664,906

IMPROVEMENTS MADE ON THE STATE AID SYSTEM FROM JUNE 30, 1950, THRU JUNE 30, 2013

County	State Aid Mileage			State Aid Improvements							Funds Expended or Obligated	
	Total Allocation	Actually Designated	Paved Mileage	Grading & Grav. Surf.	Brs. Structural #	Total Actual Miles	Overlay or Resurf.	Total Construction	Surfacing Reseal/Maint.	To Contact		
										Construction	Reseal/Mant.	
Pike	338.5	253.9	133.282	15.627	62	1.733	150.642	7.637	158.279	538.055	23,547,030	11,780,338
Pontotoc	267.15	180.09	99.297	10.876	28	0.683	110.856	4.712	115.568	256.551	16,544,255	8,246,626
Prentiss	281.65	203.05	124.065	20.356	73	1.560	145.981	29.750	175.731	250.281	25,458,711	6,629,654
Quitman	217.38	184.6	86.600	6.268	50	1.363	94.231	33.643	127.874	133.779	17,865,853	4,544,994
Rankin	541.49	270.2	143.255	10.242	81	1.523	155.020	165.762	320.782	284.887	59,883,825	9,143,163
Scott	310.55	223.3	135.873	15.732	88	1.972	153.577	11.786	165.363	424.579	23,175,859	8,734,432
Sharkey	164.28	111.6	73.556	14.543	16	0.486	88.585	40.846	129.431	169.194	11,977,060	7,354,896
Simpson	348.73	286.75	179.918	4.117	82	2.344	186.379	22.089	208.468	595.188	32,789,657	8,833,803
Smith	321.72	260	184.169	11.297	73	1.963	197.429	14.211	211.640	509.705	32,151,094	6,897,592
Stone	223.6	181.9	127.626	2.088	37	0.701	130.415	50.856	181.271	350.533	23,242,899	4,650,460
Sunflower	412.64	249.8	142.237	22.208	55	1.919	166.364	58.876	225.240	286.888	39,680,245	6,740,558
Tallahatchie	296.07	289.4	147.014	22.051	42	1.523	170.588	26.991	197.579	472.460	28,395,675	7,588,635
Tate	244.16	164.8	51.400	17.563	65	1.923	70.886	25.072	95.958	170.643	19,136,532	5,929,506
Tippah	290.95	217.3	139.723	13.772	55	1.222	154.717	9.368	164.085	299.590	25,129,370	5,764,769
Tishomingo	263.67	209.8	122.578	4.137	59	1.215	127.930	66.023	193.953	192.786	24,172,839	8,049,419
Tunica	242.45	204.2	139.241	12.521	80	0.629	152.391	92.584	244.975	203.571	17,505,617	5,884,191
Union	277.64	188.1	107.272	16.112	48	1.163	124.547	17.358	141.905	234.215	25,818,623	5,363,487
Walthall	274.85	218.86	126.888	3.183	72	1.678	131.749	87.873	219.622	560.420	19,374,243	11,172,229
Warren	284.23	193.2	70.877	8.015	35	1.412	80.304	47.143	127.447	234.269	26,614,249	4,910,456
Washington	377.67	359.5	78.578	0.859	63	2.242	81.679	81.520	163.199	105.026	38,496,934	5,186,288
Wayne	410.31	372.1	221.267	11.594	72	1.761	234.622	76.001	310.623	688.383	33,143,966	11,940,471
Webster	277.42	209.2	107.277	7.596	82	1.512	116.385	5.187	121.572	598.832	23,213,038	8,037,385
Wilkinson	223.8	152.9	95.150	2.116	33	1.042	98.308	39.793	138.101	324.112	19,211,641	5,755,472
Winston	296.54	280.55	205.695	37.926	71	1.405	245.026	27.159	272.185	327.244	34,317,794	3,778,392
Yalobusha	212.75	176.7	99.671	1.365	50	1.226	102.262	-	102.262	520.915	18,012,077	6,839,234
Yazoo	400.98	320.5	223.433	11.691	41	1.680	236.804	104.119	340.923	907.759	30,359,494	10,897,162
Totals	25,857.04	19,042.74	11,101.233	848.757	4,941	129.567	12,079.558	3,833.835	15,913.393	32,657.619	2,340,417,112	647,767,657

STATE AID PROGRAM CONSTRUCTION AND ENGINEERING DISBURSEMENTS BY COUNTY AND SYSTEM FROM JULY 1, 2012 THRU JUNE 30, 2013

COUNTY	RR CROSSING		MDOT HIGH PRIORITY MS	HIGH RISK RURAL ROAD PROGRAM	RURAL SECONDARY GRADE RSG/STPG	ACCESS HIGHWAY LAKES AHL	APPALACHIAN ACCESS HIGHWAY APL	PUBLIC LAND HIGHWAYS EFLH/PLH	DEFENSE ACCESS AGMC	EMERGENCY RELIEF		LOCAL SYSTEM ROAD PROJECTS	STATE AID PROJECTS SAP	SURFACE TRANSPORTATION		BRIDGE REPLACEMENT BR	TOTALS BY COUNTY
	System 01 & 02	System 01 & 02								System 66	System 68			System 82 & 46	System 85		
Lowndes													1,861,501	4,175	42,300		1,908,750
Madison													169,661				169,661
Marion													185,638				185,638
Marshall			185,638								63,531		43,848	205,081	580,435		1,105,025
Monroe							26,492						225,220	42,805	171,176		439,201
Montgomery													701,354		61,407		762,762
Neshoba													76,922		177,634		254,556
Newton				318,708									445,537		1,700		765,945
Nowhee													906,486	25,822	26,304		958,612
Okibbeha				68,775									1,001,859	96,085			1,166,718
Panola													391,786		16,232		408,018
Pearl River			41,346										274,458	19,518	123,594		458,916
Perry							592,882						53,744	21,333	15,943		683,902
Pike													86,390				86,390
Pontotoc													169,349	2,144			190,576
Premitts							19,083						42,257		318,348		508,145
Quitman							147,540						107,328	2,708	14,363		165,072
Rankin													1,777,782				1,777,782
Scott													798,688	6,038	1,612		7,651
Sharkey													1,401,736	397,846	51,006		2,321,768
Simpson				471,180									916,595	14,459	10,833		949,325
Smith								7,439					1,540,981	228,000	2,803		1,777,204
Stone				5,420									37,579	1,354,997			2,337,665
Sunflower													1,771,950	9,122	221,024		2,219,974
Tallahatchie				238,982									298,027				519,051
Tate													440,346	44,893	6,004		491,242
Tippah													708,551	250,151	2,868		958,702
Tishomingo													134,868				134,868
Tunica													991,950	25,011	40,925		1,057,886
Union													341,303	48,517	198,773		588,593
Walthall													92,024		859,479		1,205,595
Warren													782,276	10,991	8,980		802,247
Washington													565,879	3,723	152,478		776,770
Wayne							54,690						11,111		3,600		68,144
Webster													759,775		557,737		1,687,922
Wilkinson													619,337	52,022	225,326		896,685
Winston																	
Yalobusha																	
Yazoo																	
Service Center *																	542
Staterwide **																	4,125,512
TOTALS BY SY:	0.00	5,845,395	1,638,224	1,638,224	37,356	0	579,108	2,427,174	0	144,904	0	287,404	47,762,649	5,285,336	18,815,422		82,822,973

**LOCAL SYSTEM BRIDGE PROGRAM CONSTRUCTION AND ENGINEERING DISBURSEMENTS
BY COUNTY AND SYSTEM FROM JULY 1, 2012 THRU JUNE 30, 2013**

COUNTY	LOCAL SYSTEM	LOCAL SYSTEM	TOTALS BY COUNTY
	ROAD	BRIDGE	
	PROJECTS	PROJECTS	
	System 80	System 81	
Adams	0	0	0
Alcorn	0	5,974	5,974
Amite	0	531,948	531,948
Attala	0	226,585	226,585
Benton	0	0	0
Bolivar	0	91,760	91,760
Calhoun	0	2,938	2,938
Carroll	0	131,794	131,794
Chickasaw	0	217,757	217,757
Choctaw	0	19,197	19,197
Claiborne	0	0	0
Clarke	0	252,017	252,017
Clay	0	260,887	260,887
Coahoma	0	0	0
Copiah	0	8,262	8,262
Covington	0	167,310	167,310
DeSoto	84,415	2,541	86,956
Forrest	0	81,715	81,715
Franklin	0	50,590	50,590
George	0	0	0
Greene	0	28,610	28,610
Grenada	24,072	0	24,072
Hancock	0	293,031	293,031
Harrison	0	35,772	35,772
Hinds	0	384,407	384,407
Holmes	0	179,780	179,780
Humphreys	0	231,495	231,495
Issaquena	0	0	0
Itawamba	0	176,029	176,029

**LOCAL SYSTEM BRIDGE PROGRAM CONSTRUCTION AND ENGINEERING DISBURSEMENTS
BY COUNTY AND SYSTEM FROM JULY 1, 2012 THRU JUNE 30, 2013**

COUNTY	LOCAL SYSTEM	LOCAL SYSTEM	TOTALS BY COUNTY
	ROAD	BRIDGE	
	PROJECTS	PROJECTS	
	System 80	System 81	
Jackson	0	345,722	345,722
Jasper	0	28,539	28,539
Jefferson	0	52,629	52,629
Jefferson Davis	0	2,800	2,800
Jones	0	82,479	82,479
Kemper	0	188,124	188,124
Lafayette	0	195,537	195,537
Lamar	0	203,375	203,375
Lauderdale	0	828,053	828,053
Lawrence	0	355,112	355,112
Leake	0	295,952	295,952
Lee	0	291,774	291,774
Leflore	0	0	0
Lincoln	0	643,279	643,279
Lowndes	0	183,034	183,034
Madison	0	522,640	522,640
Marion	0	42,830	42,830
Marshall	0	48,799	48,799
Monroe	0	271,548	271,548
Montgomery	0	365,159	365,159
Neshoba	0	3,130	3,130
Newton	0	364,011	364,011
Noxubee	0	27,053	27,053
Oktibbeha	0	0	0
Panola	0	149,087	149,087
Pearl River	0	162,857	162,857
Perry	0	31,211	31,211
Pike	0	36,289	36,289
Pontotoc	0	56,122	56,122

**LOCAL SYSTEM BRIDGE PROGRAM CONSTRUCTION AND ENGINEERING DISBURSEMENTS
BY COUNTY AND SYSTEM FROM JULY 1, 2012 THRU JUNE 30, 2013**

COUNTY	LOCAL SYSTEM	LOCAL SYSTEM	TOTALS BY COUNTY
	ROAD	BRIDGE	
	PROJECTS	PROJECTS	
	System 80	System 81	
Prentiss	0	226,184	226,184
Quitman	0	24,536	24,536
Rankin	0	0	0
Scott	0	52,434	52,434
Sharkey	0	0	0
Simpson	0	321,269	321,269
Smith	0	38,736	38,736
Stone	0	46,048	46,048
Sunflower	0	187,230	187,230
Tallahatchie	0	62,823	62,823
Tate	0	16,187	16,187
Tippah	0	428,427	428,427
Tishomingo	0	41,659	41,659
Tunica	0	3,060	3,060
Union	0	393,469	393,469
Walthall	0	92,686	92,686
Warren	0	8,387	8,387
Washington	0	1,030,057	1,030,057
Wayne	0	307,601	307,601
Webster	0	207,064	207,064
Wilkinson	0	444,731	444,731
Winston	0	143,625	143,625
Yalabusha	0	309,786	309,786
Yazoo	0	738,000	738,000
TOTALS BY SYSTEM	108,487	14,281,542	14,390,029