

OFFICE OF STATE AID ROAD CONSTRUCTION



Annual Report
Fiscal Year 2014

OFFICE OF STATE AID ROAD CONSTRUCTION

SUMMARY ANNUAL REPORT

FOR

THE FISCAL YEAR JULY 1, 2013 TO JUNE 30, 2014

TOGETHER WITH

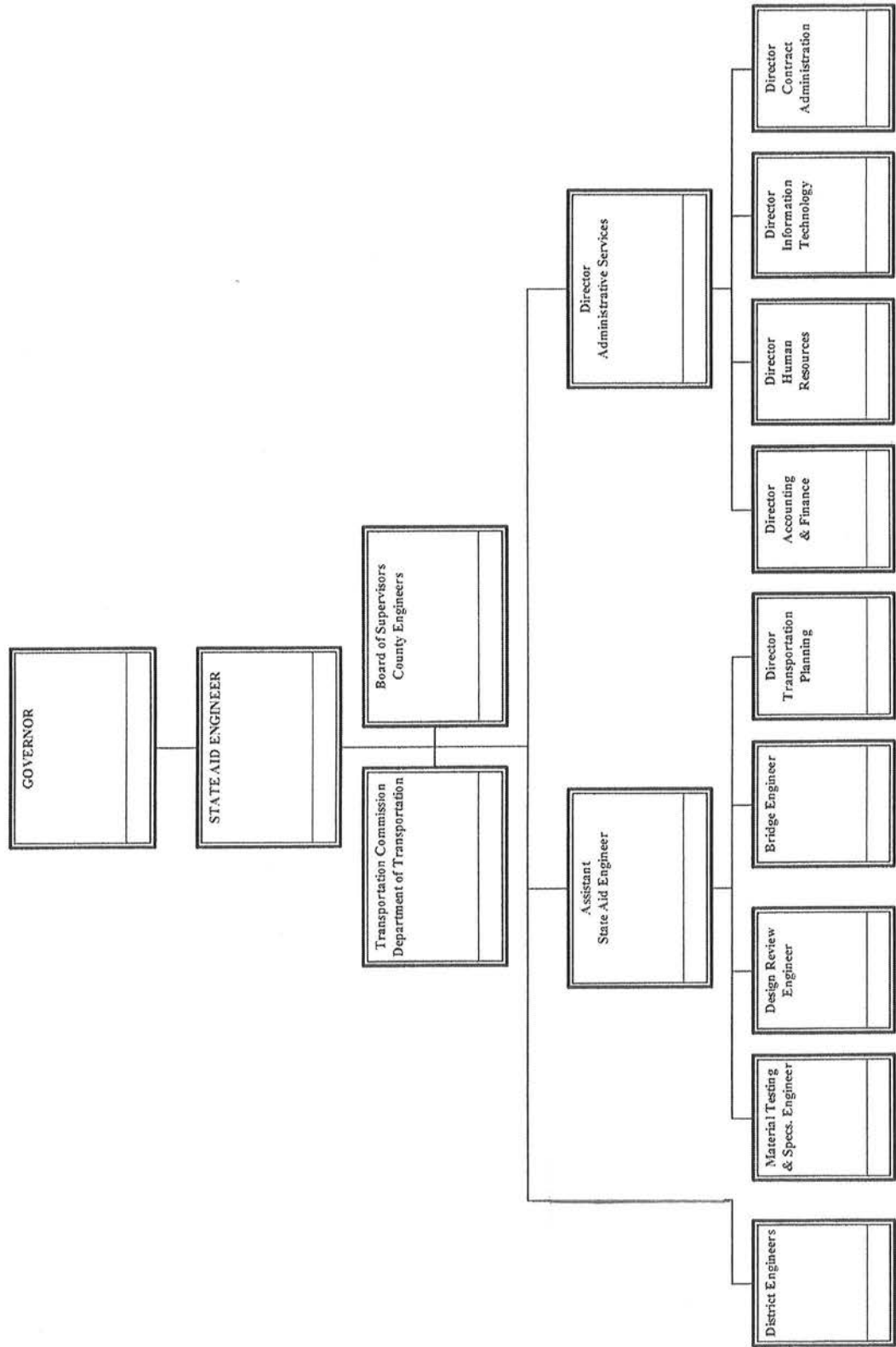
A PROGRESS REPORT FROM THE BEGINNING OF THE

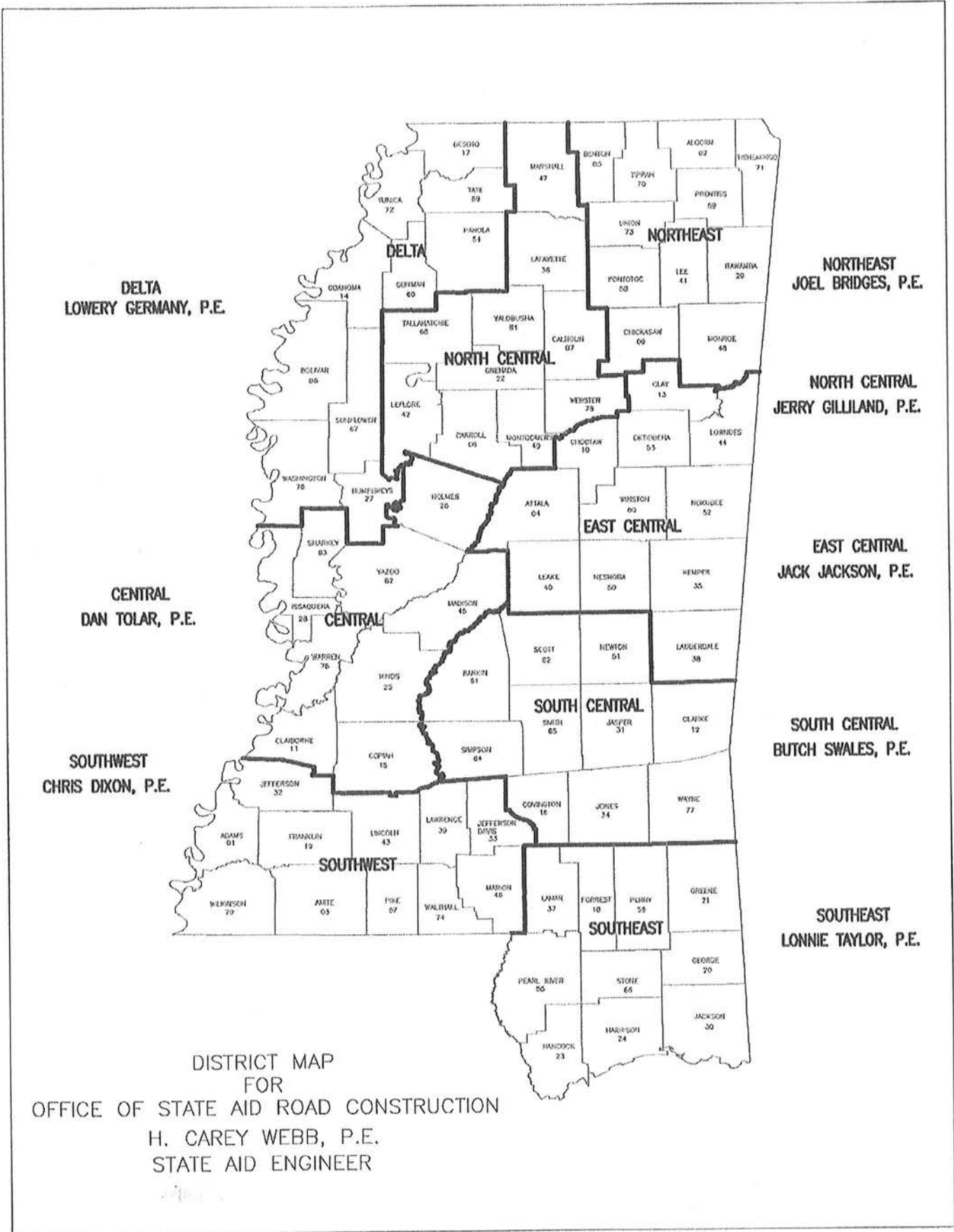
PROGRAM (MAY, 1950) TO JUNE 30, 2014

TABLE OF CONTENTS

| | <u>Page</u> |
|--|-------------|
| Organizational Chart | 1 |
| District Map | 2 |
| State Aid Road Program: | |
| Background of Program | 3 |
| Organization of Program | 4 |
| Operation of Program | 5 |
| Type or Character of Construction and Reseal Programs | 6 |
| Progress of Program | 7 |
| Revenue Sources and Amounts | 12 |
| Receipts and Disbursements | 14 |
| Funding Summary | 15 |
| Summary of Administrative Expenses | 16 |
| Out-of-State Travel to Conventions and Meetings | 18 |
| Automobile Expenditures for State-Owned Vehicles | 19 |
| Improvements Let to Contract from July 1, 2013 thru June 30, 2014 | 20 |
| Improvements Made on State Aid System from June, 1950, thru June 30, 2014 | 22 |
| State Aid Program Construction and Engineering Disbursements from July 1, 2013 thru June 30, 2014 | 25 |
| Local System Bridge Program Construction and Engineering Disbursements from July 1, 2013, thru June 30, 2014 | 27 |

OFFICE OF STATE AID ROAD CONSTRUCTION
 ORGANIZATION CHART
 Fiscal Year 2014
 Annual Report





DISTRICT MAP
FOR
OFFICE OF STATE AID ROAD CONSTRUCTION
H. CAREY WEBB, P.E.
STATE AID ENGINEER

THE STATE AID ROAD PROGRAM

This report primarily summarizes the operations and progress of the State Aid Program for the fiscal year July 1, 2013 to June 30, 2014.

It is considered appropriate, however, to include an overall background of the program covering the enabling legislation, organization and functions at the State Aid Office and county levels, total funds expended, and total construction improvements accomplished.

An estimate of the program volume anticipated for the fiscal year July 1, 2014 to June 30, 2015 is also included in the report.

BACKGROUND OF PROGRAM

The State Aid Program had its beginning with the passage of Chapter 6, Laws of the Extraordinary Session of 1949 (Section 65-9-[1-33] of the Mississippi Code of 1972). This legislation provided for the creation of a division within the State Highway Department, to be known as the Division of State Aid Road Construction, and to be charged with the responsibility of administering the program at the state level. The 1992 Legislature passed Senate Bill 2763 which created the Mississippi Department of Transportation. Under this bill the State Highway Department became known as the Department of Transportation and the Division of State Aid Road Construction became known as the Office of State Aid Road Construction.

The Enabling Act also provided for a State Aid System, to be composed of the principal collector and distributor routes in the 82 counties, connecting with the State Highway System and other principal county roads to form a network of secondary roads for the state. This system was originally limited to 11,656.4 miles, with each county allocated a percentage of this eligible mileage. The State Legislature at its 1962 Regular Session increased the eligible system mileage to 23,312.8 miles. No change was made in the allocation percentages. In 1994, under House Bill 1302, the allocation percentages were revised and the eligible mileage was increased to 25,857.04 miles. There are 19,036.53 miles actually designated by the Boards and approved by the State Aid Engineer as of June 30, 2014.

The 1994 Regular Session of the Legislature passed House Bill 1302 which included the establishment of a Local System Bridge Replacement and Rehabilitation Program (LSBP), (Section 65-37[1-15] of the Mississippi Code of 1972). The program provides funding for replacement and rehabilitation of deficient bridges maintained by counties or municipalities excluding bridges on the State Aid System, the municipal urban system or the rural major collector system. The Office of State Aid Road Construction is charged with the responsibility of administering the LSBP program under rules and regulations promulgated by the State Aid Engineer.

The 2001 Regular Session of the Legislature passed Senate Bill No. 2318 which established the Local System Road Program (LSRP), (Section 65-18[1-17] of the Mississippi Code of 1972). The program gives the counties the ability to use LSBP and State Aid funds (subject to certain criteria) for the construction, reconstruction and paving of county roads not on the State Aid Road System.

ORGANIZATION OF PROGRAM

Organization of the State Aid Office

The State Aid Enabling Act provides that the Office of State Aid Road Construction be directed by a State Aid Engineer, who is appointed by the Governor for terms of four years each (as amended by the Legislature in 1985). It further provides that the State Aid Engineer hire assistant engineers and other employees necessary to carry out the duties and responsibilities set out in the enabling legislation.

The actual organization of the office began with the appointment of the first State Aid Engineer on May 11, 1950. The office was authorized in 2014 to have an organization for a staff of fifty-two (52) full-time employees, including fourteen (14) Registered Professional Engineers. All positions are approved by the Department of Finance and Administration and the State Personnel Board.

Organization at the County Level

Each Board of Supervisors, as the governing agency of the county, is required by statute to appoint a County Engineer, who is a Registered Professional Engineer, to act for and on behalf of the Board and to administer the engineering functions at the county level, subject to the rules and regulations promulgated by the State Aid Engineer.

The Board is also required to appoint a Local System Bridge Engineer to administer the LSBP program at the county level. The duties of the LSBP Engineer parallel those of the County Engineer and the Board may elect to appoint the County Engineer as the LSBP Engineer.

OPERATION OF THE PROGRAM

Operation of the Program at the County Level

It is the responsibility of the Board of Supervisors to designate the roads to be included in the county's State Aid System; adopt annual construction programs; acquire rights-of-way for State Aid projects; advertise for bids; award contracts; and maintain completed projects after construction.

The County Engineers' responsibilities and duties include, but are not limited to, the following: Assist the Boards of Supervisors in the designation and modification of their State Aid Systems; prepare annual construction programs; make surveys and prepare detailed plans and designs; make field inspections with the State Aid Engineer's representatives; prepare proposals for advertisement for bids; attend lettings at the county level; provide engineering controls (staking, etc.); supervise and inspect construction; prepare estimates for payment to the contractors; and make annual maintenance inspections of completed projects.

Operation of the Program at the State Level

It is the responsibility of the State Aid Engineer and his staff to prepare and adopt uniform design standards and specifications for the construction and maintenance of State Aid projects; approve all additions to the State Aid System; approve all construction programs, plans and specifications; authorize advertisement for bids; concur in the award of the contracts; approve and disburse all payments made from the project fund; approve the final acceptance of completed projects; and make annual and other periodic inspections of completed projects to see that they are properly maintained by the respective Boards of Supervisors.

TYPE OR CHARACTER OF CONSTRUCTION AND RESEAL PROGRAMS

Construction

During the early years of the program (the 1950's), many counties had a great need for bridges and graded roadways with a gravel surface, although many other counties began their State Aid Programs with the construction of hard-surfaced (blacktop) improvements.

It has been the objective throughout the program to construct roads that would connect with the State Highway System and other State Aid routes to form a network of secondary roads. At the present time, all programs now being approved provide for the future completion of a hard-surfaced facility.

The first hard-surfaced State Aid roads, which were completed in the beginning of the program, now need asphalt overlays. It will be noted from the summaries to follow in this report that a total of 3,837.39 miles of hot mix asphalt overlay construction (some surfaces were widened) has been accomplished. This points to the fact that the principal or arterial State Aid roads must now be upgraded to meet increasing traffic volumes and heavier loads. It is anticipated that the need for these betterments on the principal routes will continue to increase.

Maintenance and Reseal Work

The original State Aid Act did not permit the use of State Aid funds for the reseal of existing bituminous surfaces, which work consists of a light application of liquid asphalt and a light application of a fine or seal aggregate to cover the asphalt. Reseal work is regarded as maintenance. The Legislature, during its 1962 Session, amended the law to permit the use of State Aid funds (not to exceed 10%) to reseal hard-surfaced roads which had been constructed through the use of State Aid Funds. This 10% limitation was eliminated during the 1982 Legislative Session.

Bituminous surface treatments need to be resealed on an average of every five or six years to protect the surfaces and the investments made therein. A total of 32,658.79 miles have been resealed, with 3,562.35 miles of this total being contracted during the 2014 fiscal year.

The Legislature, during the 1982 Regular Session, amended Section 65-9-25 of the Mississippi Code of 1972 to permit additional State Aid funds to be used for maintenance, repair and reconstruction of State Aid roads which have been constructed in accordance with State Aid standards and specifications.

The greater majority of State Aid funds in recent years have been used for reseals, pavement maintenance and bridges, with only the remaining funds available for new construction. Some of the older routes that were built in the 1950's and 1960's were constructed to 57,650 pounds. These routes are now being reclaimed to support greater loads and traffic necessary for the agriculture and forestry industries, as well as for the travelling public.

PROGRESS OF PROGRAM**Projects Placed Under Contract from July 1, 2013 thru June 30, 2014**

| | # | Miles | Cost |
|--|-----------|------------------|-------------------|
| LSBP Projects (Bridges Replaced) | 50 | 4.871 | 17,717,575 |
| LSRP (LSBP Funds) | 2 | 6.903 | 1,479,433 |
| LSRP (SA Funds) | 3 | 10.028 | 1,509,067 |
| Total LSBP and LSRP Projects (LSBP & SA Funds) | <u>55</u> | | <u>20,706,075</u> |
| State Aid & Federal Aid Projects (including Bridge Inspections) | | | |
| Construction | | | |
| Grading, Drainage Structures & Paving | | 174.906 | |
| Grading, Drainage Structures & Gravel Surface | | 18.235 | |
| Bridges | | 21.706 | |
| Asphalt Overlay Construction | | 707.786 | |
| Total Construction Improvements | 58 | <u>922.633</u> | 52,727,248 |
| Reseal & Maintenance Projects (Previously Paved State Aid Routes) | 40 | <u>3,556.404</u> | <u>32,530,600</u> |
| Total State Aid & Federal Aid Project (including Bridge Inspections) | <u>98</u> | | <u>85,257,848</u> |

NOTE: The above totals, by Counties, are included elsewhere in this report.

Amounts and Types of Funds Contracted:

| | |
|---|----------------------------------|
| State Aid | 47,569,700 |
| County | 596,900 |
| Federal Funds: | |
| MDOT Funds | 0 |
| Surface Transportation | 9,542,240 |
| DECD/Federal Match | 0 |
| Appalachian Access | 3,772,096 |
| Bridge Replacement | 14,970,200 |
| Bridge Inspection | 5,540,000 |
| Eastern Federal Land Highway (EFLH) | 0 |
| Emergency Relief | 36,192 |
| High Priority | 869,920 |
| High Risk Rural Road (HRRRP) | 1,462,400 |
| MMEIA/MDA | 423,200 |
| National Corridor Planning & Development (NCPD) | 0 |
| Public Lands Highway (PLH) | 0 |
| Transportation-Community-System Preservation (TCSP) | <u>475,000</u> |
| Total Funds Contracted | <u>85,257,848</u> |
| Grand Total all Projects | <u>153</u> <u>105,963,923</u> |

Projects Completed and/or Placed Under Contract from Beginning of Program in June, 1950, thru June 30, 2014

| | # | Miles | Cost |
|--|---------------|-------------------|----------------------|
| LSBP Projects (Bridges Replaced) | 1,135 | 188.109 | 344,718,928 |
| LSRP (LSBP Funds) | 10 | 27.866 | 8,030,433 |
| LSRP (SA Funds) | 22 | 28.296 | 9,264,227 |
| | | | |
| Total LSBP and LSRP Projects (LSBP & SA Funds) | <u>1,167</u> | | <u>362,013,588</u> |
| | | | |
| State Aid & Federal Aid Project (including Bridge Inspections) | | | |
| Construction | | | |
| Grading, Drainage Structures & Paving | | 11,108.808 | |
| Grading, Drainage Structures & Gravel Surface | | 848.795 | |
| Bridges | | 130.086 | |
| Asphalt Overlay Construction | | 3,805.416 | |
| Total Construction Improvements | 8,662 | <u>15,893.105</u> | 2,317,851,784 |
| | | | |
| Reseal & Maintenance Projects (Previously Paved State Aid Routes) | 1,715 | <u>32,652.839</u> | 744,931,908 |
| | | | |
| Total State Aid & Federal Aid Project (including Bridge Inspections) | <u>10,377</u> | | <u>3,062,783,692</u> |
| | | | |
| Grand Totals all Projects | <u>11,544</u> | | <u>3,424,797,280</u> |

NOTE: The above totals, by Counties, are included elsewhere in this report.

Projects in Contract Stage as of June 30, 2014

| | # | Miles | Cost |
|--|------------|------------------|--------------------|
| LSBP Projects | 73 | 7.678 | 26,850,580 |
| LSRP (LSBP Funds) | 1 | 4.627 | 746,300 |
| LSRP (SA Funds) | 3 | 4.075 | 1,372,000 |
| Total LSBP and LSRP Projects (LSBP & SA Funds) | 77 | | 28,968,880 |
| State Aid Projects (State Aid Funds): | | | |
| Construction | 29 | 21 | 17,533,800 |
| Maintenance | 34 | 271 | 30,944,764 |
| Reseal | 27 | 663 | 36,216,000 |
| Federal Aid Projects (State Aid , Federal & LSBP Funds): | | | |
| Surface Transportation | 22 | 131 | 16,468,400 |
| STPG | 3 | 31 | 1,118,600 |
| Appalachian Access | 2 | 1 | 479,756 |
| Bridge Replacement | 36 | 11 | 41,204,002 |
| Bridge Inspection | 7 | 0 | 16,640,428 |
| Eastern Federal Land Highway (EFLH) | 1 | 0 | 430,400 |
| Emergency Relief | 3 | 4 | 2,605,359 |
| High Priority | 24 | 101 | 46,144,641 |
| High Risk Rural Road (HRRRP) | 6 | 46 | 2,998,748 |
| Public Land Highways | 1 | 7 | 2,909,603 |
| Total State Aid & Federal Aid Projects | 195 | 1,286.839 | 215,694,501 |
| Grand Totals all Projects | 272 | 1,303.219 | 244,663,381 |

Estimated Program Volume for July 1, 2013, thru June 30, 2014

It is difficult to estimate the miles of construction and reseal improvements that will be let to contract during the coming fiscal year. However, the State Aid Road Construction Program has the potential for a \$100 to \$200 million total program for the fiscal year 2014. In addition, we expect to place under contract \$20 million in LSBP Funds.

As of June 30, 2014, programs (proposed improvements) have been adopted by the Boards of Supervisors and approved by the State Aid Engineer for the following work:

| Type of Projects | Number of Projects | Estimated Cost |
|------------------------------------|---------------------------|-----------------------|
| Total LSBP (System 81) | 144 | \$53,015,259 |
| Total LSRP (LSBP Funds)(System 80) | 4 | \$2,510,971 |
| Total LSRP (SA Funds)(System 80) | 1 | \$154,900 |
| State Aid: (State Aid Funds Only) | | |
| Construction (System 81) | 38 | \$20,417,815 |
| Maintenance (System 81) | 36 | \$16,811,849 |
| Reseal (System 81) | 5 | \$4,871,326 |
| State Aid & Federal Aid Funds | | |
| STP (System 82) | 79 | \$65,349,432 |
| STPG (System 32) | 1 | \$497,757 |
| APL (System 36) | 4 | \$1,971,948 |
| BR (System 85) | 45 | \$54,521,043 |
| EFLH (System 63) | 7 | \$3,432,018 |
| ER (System 66) | 8 | \$604,128 |
| HRRRP (System 25) | 7 | \$2,222,235 |
| MS, FBD (System 19) | 31 | \$122,145,681 |
| PLH (System 62) | 3 | \$1,901,445 |
| GRAND TOTAL | 413 | \$350,427,807 |
| Total State Aid | 264 | \$294,746,677 |

The Boards of Supervisors began the new four-year term on January 1, 2012, and have available for planning and expenditure purposes 90% of the State Aid revenue that will accrue during the 2012-2015 period.

Bridge Replacement and Rehabilitation is a major Federal program that has helped the counties to improve the seriously deficient condition of many State Aid and Federal Aid System bridges. Historically, the Mississippi Department of Transportation transferred approximately 30% of the Bridge Replacement funds that are apportioned to the State Aid program for replacement of deficient bridges on county roads. In fiscal year 2014, \$17,495,459 was authorized. State Aid is projected to receive for fiscal year 2015, \$15,000,000 to be transferred by Mississippi Department of Transportation.

The cost per mile for the construction of projects, embracing grading, drainage structures, small bridges, base and bituminous surfacing, ranges from \$610,925.77 per mile to \$4,935,643.56 per mile, depending on the soil conditions, availability of construction materials and terrain. The average cost of construction projects in fiscal year 2014 was \$2,708,214.00 per mile.

Projects involving large bridges with long spans and/or projects requiring higher design standards because of heavy traffic demands or other special conditions should not be considered in these cost ranges.

Liquid seal (resealing) projects range from \$13,523.32 to \$108,615.05 per mile, depending on the location and on the leveling and base course corrections needed. The average cost of reseal projects in fiscal year 2014 was \$43,200.82 per mile.

REVENUE SOURCES AND AMOUNTS

Revenues for the State Aid Program are derived from the following state and federal sources:

State Sources:

- (a) Section 27-65-75, Mississippi Code of 1972 (as amended by the 1994 and 1999 Regular Sessions of the Legislature), provides for a minimum diversion of \$48,000,000 or 23.25%, whichever is greater, from gasoline, diesel fuel or kerosene tax revenue and \$3,000,000 from sales tax collections into the Office of State Aid Road Construction special fund in each fiscal year for the State Aid program.

State Aid funds have been constant since 1995, although construction costs have risen 40%, resulting in counties having a difficult time maintaining their State Aid system to keep up with the increase in traffic and weight of loads. If roads are not properly maintained as they get older, it will be costlier to keep these roads at a level of satisfactory maintenance to ensure safe and efficient conveyance of goods and services.

- (b) Mississippi Code of 1972, Section 65-37-13 (c) provided that the Local System Bridge Replacement and Rehabilitation Fund be appropriated \$20 million from the General Fund, if the General Fund revenues reflect a growth of 2% or more for the succeeding fiscal year. Mississippi Code Section 65-37-13 also extended the Local System Bridge Replacement and Rehabilitation Program through 2016 and provides for LSBP funds to be issued to each county as advanced credits. Advanced credits allow each county to plan bridge repair or replacement projects and to utilize LSBP funds on hand to the fullest practicable extent at all times. These advanced credits are based upon anticipated revenue and can be issued by the county board term, which is four years. On January 1, 2012 advanced credits were issued at \$20 million per year for four fiscal years ending December 31, 2015.

In Fiscal Years 2004 through 2012 the LSBP program was funded with bond proceeds. In Fiscal Year 2013 the LSBP program received no funding and \$20 million of Budget Contingency Funds in Fiscal Year 2014. Senate Bill 2001, First Extraordinary Session 2014 provided \$20 million of Capital Expense Funds to be appropriated for the LSBP Program.

The LSBP fund earned interest on bond fund treasury accounts in the amount of \$262,933 for FY 2014.

- (c) Section 65-9-17 authorizes the counties to use County funds to supplement State Aid funds for the construction of State Aid roads.

- (d) The Economic Development Highway Act (Code Section 65-4-1) authorizes the Mississippi Development Authority (MDA) to assist political subdivisions with Highway Projects which encourage private companies to engage in high economic benefit projects within their area. These funds are made available to the county(ies) or municipality(ies) on an individual project basis and are administered in accordance with guidelines established by the MDA. The Office of State Aid is responsible for administering MDA projects that are not on the State Highway System.

Federal Sources (Regular):

MDOT provides a portion of the Surface Transportation Program funds under MAP-21, which includes Bridge Replacement funds made available to the State of Mississippi by the Federal Government to the counties through the State Aid Office.

Federal Sources (Special):

- (a) Emergency Relief funds are made available by the Federal Government to the counties through the State Aid Office on an individual project basis, to reconstruct roads and bridges on Federal Aid highways damaged or destroyed by floods, hurricanes, catastrophic failure and other disasters.
- (b) Appalachian Access Highway funds are made available to the counties in the twenty-four county Appalachian area in northeast Mississippi on an individual project basis. These projects are administered by the State Aid Office on an individual project basis through the Federal Highway Administration.
- (c) Other funds earmarked by Congress for selected counties.

RECEIPTS AND DISBURSEMENTS

| | Actual FY Ending 6/30/2014 | Estimated FY Ending 6/30/2015 | Estimated FY Ending 6/30/2016 |
|---|---|--|--|
| DISBURSEMENTS | | | |
| Construction of Highways | | | |
| State Aid Projects - General Funds | 0 | 32,000,000 | 32,000,000 |
| State Aid Projects - Special Funds | 67,658,149 | 79,809,157 | 79,809,157 |
| Federal Aid Projects | 54,377,821 | 70,000,000 | 70,000,000 |
| Local System Bridge Program | 17,009,739 | 26,954,632 | 20,000,000 |
| Budget Contingency Fund | 0 | 20,000,000 | 0 |
| Administrative | 4,908,450 | 5,049,541 | 5,168,068 |
| Total Expenditures-OSARC | 143,954,159 | 233,813,330 | 206,977,225 |
| RECEIPTS | | | |
| Gasoline Tax(Section 27-65-75) | 48,242,324 | 57,000,000 | 57,000,000 |
| Sales Tax(Section 27-65-75) | 3,000,000 | 3,000,000 | 3,000,000 |
| County Contributions | 1,645,387 | 19,399,157 | 19,399,157 |
| Misc State Aid Revenue | 32,586 | 60,000 | 60,000 |
| Interest on Investments | 262,933 | 350,000 | 350,000 |
| Administrative | 3,274,808 | 5,049,541 | 5,168,068 |
| General Fund | 0 | 32,000,000 | 52,000,000 |
| Budget Contingency Fund (LSBP) | 20,000,000 | 0 | 0 |
| Capital Expense Fund (LSBP) | 0 | 20,000,000 | 0 |
| Total State Revenue-OSARC | 76,458,038 | 136,858,698 | 136,977,225 |
| Federal Funds(Allocations)Reimbursements | | | |
| FHWA Reimbursements | 43,135,899 | 55,000,000 | 55,000,000 |
| Federal Aid Matching Requirements | 5,480,920 | 15,000,000 | 15,000,000 |
| Total Federal Funds-OSARC | 48,616,819 | 70,000,000 | 70,000,000 |
| Total Revenue | 125,074,857 | 206,858,698 | 206,977,225 |
| Beginning Funds Balance | 104,068,282 | 85,188,980 | 78,234,348 |
| Ending Funds Balance | 85,188,980 | 78,234,348 | 78,234,348 |
| Total Available | 143,954,159 | 213,813,330 | 206,977,225 |

FUNDING SUMMARY

FUNDS MADE AVAILABLE DURING FY 2014

Sources:

| | | |
|---|-------------------|---------------------------|
| Gasoline Tax (Section 27-65-75) | 51,517,132 | |
| Sales Tax (Section 27-65-75) | 3,000,000 | |
| County Contributions | 1,645,387 | |
| Federal Aid Matching Requirements | 5,480,920 | |
| Interest on Investments | 262,933 | |
| Miscellaneous Revenue | 32,586 | |
| Administrative Transfer from Counties | 5,406,816 | |
| Budget Contingency Funds (LSBP) | 20,000,000 | |
| Federal Funds-- | | |
| FHWA Reimbursements | 43,135,899 | |
| Total Federal Funds | <u>43,135,899</u> | |
| Total Fiscal Year Revenue | | 130,481,673 |
| Less: Requirements for Administrative Expenses | | <u>(5,406,816)</u> |
| Total Funds Made Available for Construction During FY 2014 | | <u><u>125,074,857</u></u> |

PROJECTION OF REVENUE FOR FY 2015 AND FY 2016

Sources:

| | <u>FY 2015</u> | <u>FY 2016</u> |
|---|---------------------------|---------------------------|
| General Funds | 32,000,000 | 32,000,000 |
| Gasoline Tax (Section 27-65-75) | 57,000,000 | 57,000,000 |
| Sales Tax (Section 27-65-75) | 3,000,000 | 3,000,000 |
| County Contributions | 19,399,157 | 19,399,157 |
| Federal Aid Matching Requirements | 55,000,000 | 55,000,000 |
| Miscellaneous State Aid Revenue | 60,000 | 60,000 |
| Local System Bridge Funds | 20,000,000 | 20,000,000 |
| Interest on Investments | 350,000 | 350,000 |
| Administrative Transfer from Counties | 5,049,541 | 5,168,068 |
| Federal Funds - FHWA Reimbursements | 15,000,000 | 15,000,000 |
| Total Fiscal Year Revenue | <u>206,858,698</u> | <u>206,977,225</u> |
| Less: Requirements for Administrative Expenses | (5,049,541) | (5,168,068) |
| Total Revenue Available for Construction | <u><u>201,809,157</u></u> | <u><u>201,809,157</u></u> |

SUMMARY OF ADMINISTRATIVE EXPENSES

Salaries, Wages and Fringe Benefits:

| | | |
|----------------------------|-----------|-----------|
| Salaries and Wages | 2,522,129 | |
| Personal Leave Pay | 277 | |
| Retirement Matching | 397,279 | |
| Social Security Matching | 183,485 | |
| Workers' Compensation | 7,696 | |
| Group Health Insurance | 212,176 | |
| Group Life Insurance | 4,629 | |
| Unemployment Insurance Tax | 5,343 | |
| Cafeteria Plan | 3,145 | 3,336,158 |

Travel:

| | | |
|--------------|--------|--------|
| In-State | 31,065 | |
| Out-of-State | 30,593 | 61,657 |

Contractual Services:

| | | |
|-----------------------------------|---------|---------|
| Tuition & Employee Training | 14,370 | |
| Liability Insurance Contributions | 9,397 | |
| Postage | 10,000 | |
| Freight | 1,168 | |
| Rents | 17,182 | |
| Repairs to Motor Vehicles | 3,107 | |
| Consultant Fees | 2,580 | |
| Engineering Services | 93,495 | |
| SAAS | 6,076 | |
| MMRS | 6,991 | |
| Audit Department | 116,656 | |
| State Personnel Board | 7,398 | |
| Temporary Employment Fees | 11,481 | |
| Fidelity Bonds | 5,262 | |
| Other Fees & Services | 200 | 305,362 |

Information Technology:

| | | |
|---------------------------------------|---------|---------|
| IS Professional Fees - Outside Vendor | 208,126 | |
| ITS Fees | 2,174 | |
| Service Fees to State Computer Center | 1,353 | |
| Software Acquisition | 30,771 | |
| Network Charges | 12,463 | |
| Telephone Fees | 16,670 | |
| Long Distance | 433 | |
| Usage Time Cellular Telephones | 13,571 | 285,560 |

SUMMARY OF ADMINISTRATIVE EXPENSES

Commodities:

| | | |
|--------------------------------------|--------|--------|
| Printing and Binding | 142 | |
| Duplication Supplies | 1,592 | |
| Office Supplies and Materials | 4,871 | |
| Paper Supplies | 1,596 | |
| Maps and Manuals | 295 | |
| Office Equipment | 11,216 | |
| Fuel Card - Gas, Oils, Greases, Etc. | 8,322 | |
| Tires and Tubes - Auto | 2,249 | |
| Prior Year Expense | 38 | |
| Batteries & Accessories for Vehicles | 5,973 | |
| Other Miscellaneous Expenses | 10,886 | |
| Procurement Card Purchases | 2,681 | 49,860 |
| | | <hr/> |

Capital Outlay:

| | | |
|-----------------------------|---------|---------|
| Office Furniture & Fixtures | 14,567 | |
| Mainframe Systems Equipment | 150,465 | 165,032 |
| | | <hr/> |

Total

4,203,629

OUT-OF-STATE TRAVEL TO CONVENTIONS AND MEETINGS

| Employee's Name | Travel Destination | Travel Meeting Title | Total Amount |
|--------------------------|--------------------|---|---------------------|
| Bond, John Ferris Jr | Charleston, SC | 2013 Southern Transportation Civil Rights Symposium | \$ 1,825.54 |
| Bond, John Ferris Jr | Phoenix, AZ | AASHTO National Civil Rights Symposium | \$ 1,702.41 |
| Cooper, Kimberly Renee | Charleston, SC | 2013 Southern Transportation Civil Rights Symposium | \$ 2,032.07 |
| Cooper, Kimberly Renee | Phoenix, AZ | AASHTO National Civil Rights Symposium | \$ 1,713.81 |
| Davis, Charles W. | Asheville, NC | SASHTO Conference | \$ 2,136.56 |
| Germany, Lowery Q. | Denver, CO | AASHTO Annual Meeting | \$ 1,496.31 |
| Gilliland, Jerry G. | Asheville, NC | SASHTO Conference | \$ 1,582.21 |
| Glover, Lanny B. | Denver, CO | AASHTO Annual Meeting | \$ 1,304.19 |
| Jordan, Daniel G. | Charleston, SC | 2013 Southern Transportation Civil Rights Symposium | \$ 1,564.94 |
| Jordan, Daniel G. | Phoenix, AZ | AASHTO National Civil Rights Symposium | \$ 1,761.15 |
| Jordan, Daniel G. | Knoxville, TN | AGA Fall Leadership Seminar | \$ 875.35 |
| Maher, James Earl Jr | Knoxville, TN | AGA Fall Leadership Seminar | \$ 172.92 |
| Mohr, Sandra Lynn | Charleston, SC | 2013 Southern Transportation Civil Rights Symposium | \$ 1,983.02 |
| Mohr, Sandra Lynn | Phoenix, AZ | AASHTO National Civil Rights Symposium | \$ 1,701.77 |
| Stuart, Brandi Westbrook | Charleston, SC | 2013 Southern Transportation Civil Rights Symposium | \$ 1,868.11 |
| Webb, H. Carey | Denver, CO | AASHTO Annual Meeting | \$ 1,282.86 |
| Webb, H. Carey | West Helena, AR | MS Indian Mound Trail Project | \$ 121.99 |
| Webb, H. Carey | Asheville, NC | SASHTO Conference | \$ 919.31 |
| Wells, Graham | Arlington, VA | NHI Bridge Safety Inspection Course | \$ 4,548.07 |
| GRAND TOTAL | | | <u>\$ 30,592.59</u> |

AUTOMOBILE EXPENDITURES FOR STATE-OWNED VEHICLES

| Make/Model | Year | Tag # | Cost | Use | Annual Mileage | Total Mileage |
|-------------------|-------------|--------------|--------------|---------------------------------|---------------------------|--------------------------|
| Nissan/Titan | 2009 | G51350 | \$ 23,756.00 | Bridge Division Pool Car | 8,140 | 49,523 |
| Nissan/Titan | 2009 | G51349 | \$ 23,756.00 | Bridge Division Pool Car | 5,837 | 51,102 |
| Chevrolet/Impala | 2010 | G52756 | \$ 17,291.00 | Administrative Pool Car | 8,025 | 94,485 |
| Chevrolet/Impala | 2011 | G57409 | \$ 17,291.00 | State Aid Engineer | 9,014 | 76,147 |
| Ford/F150 | 2011 | G57577 | \$ 20,389.00 | East Central District Engineer | 31,839 | 100,425 |
| Chevrolet/Impala | 2012 | G60540 | \$ 17,555.00 | Administrative Pool Car | 7,018 | 44,308 |
| Dodge/Ram | 2014 | G65457 | \$ 21,495.00 | Central District Engineer | 7,688 | 7,688 |
| Dodge/Ram | 2014 | G65458 | \$ 21,495.00 | Southwest District Engineer | 17,187 | 17,187 |
| Dodge/Ram | 2014 | G65455 | \$ 21,495.00 | South Central District Engineer | 12,458 | 12,458 |
| Dodge/Ram | 2014 | G65461 | \$ 21,495.00 | Southeast District Engineer | 13,236 | 13,236 |
| Dodge/Ram | 2014 | G65456 | \$ 21,495.00 | Northeast District Engineer | 21,259 | 21,259 |
| Dodge/Ram | 2014 | G65459 | \$ 21,495.00 | Delta District Engineer | 12,814 | 12,814 |
| Dodge/Ram | 2014 | G65460 | \$ 21,495.00 | North Central District Engineer | 16,650 | 16,650 |

IMPROVEMENTS LET TO CONTRACT FROM JULY 1, 2013 THRU JUNE 30, 2014

| County | Construction Miles and Cost | | | | | | | Reseal & Maintenance | |
|-----------------|-----------------------------|--------|---------|-------|--------|--------|-----------|----------------------|-----------|
| | Grading & | | Bridges | | Resur- | Total | Cost | Miles | Cost |
| | Surfacing | Gravel | # | Miles | facing | Miles | | | |
| Adams | 1.249 | 0.620 | - | - | - | 1.869 | 2,682,300 | 22.693 | 833,300 |
| Alcorn | 5.231 | 0.374 | 8 | 0.328 | - | 5.933 | 366,400 | 60.865 | 323,100 |
| Amite | 1.638 | - | 5 | 0.403 | 41.678 | 43.719 | - | 38.017 | - |
| Attala | 0.723 | 0.501 | 11 | 0.432 | 34.486 | 36.142 | 1,929,700 | 67.646 | 936,700 |
| Benton | 3.110 | 0.138 | 7 | 0.438 | - | 3.686 | - | 30.279 | - |
| Bolivar | 4.618 | 0.164 | 3 | 0.089 | - | 4.871 | - | 40.859 | - |
| Calhoun | 0.146 | 0.231 | 3 | 0.052 | - | 0.429 | - | 62.796 | 268,300 |
| Carroll | 0.161 | 0.218 | 6 | 0.487 | 46.856 | 47.722 | 2,511,500 | 46.454 | 437,800 |
| Chickasaw | 4.977 | 0.036 | 2 | 0.117 | - | 5.130 | 2,225,300 | 18.061 | - |
| Choctaw | 0.219 | 0.163 | 4 | 0.127 | - | 0.509 | 36,192 | 52.882 | - |
| Claiborne | 1.636 | - | - | - | 5.180 | 6.816 | - | 22.698 | - |
| Clarke | 0.532 | 0.072 | 4 | 0.139 | - | 0.743 | - | 43.676 | - |
| Clay | 0.166 | 0.530 | 6 | 0.500 | 16.828 | 18.024 | - | 33.534 | - |
| Coahoma | 0.605 | - | - | - | 7.604 | 8.209 | - | 24.293 | - |
| Copiah | 0.199 | 0.376 | 6 | 0.621 | 62.473 | 63.669 | - | - | - |
| Covington | 1.492 | 0.237 | 8 | 0.205 | 3.910 | 5.844 | 1,713,000 | 26.633 | - |
| DeSoto | 0.738 | - | 3 | 0.033 | 6.859 | 7.630 | 458,000 | 7.029 | 1,546,400 |
| Forrest | 0.096 | - | 1 | 0.017 | 11.594 | 11.707 | 798,300 | 43.941 | - |
| Franklin | 4.564 | 0.417 | 4 | 0.423 | - | 5.404 | - | 41.088 | - |
| George | 0.883 | 0.089 | 4 | 0.111 | - | 1.083 | 1,043,300 | 41.448 | 123,000 |
| Greene | - | 0.055 | 3 | 0.181 | 18.989 | 19.225 | - | 0.318 | 79,800 |
| Grenada | 0.964 | - | - | - | - | 0.964 | - | 64.232 | - |
| Hancock | - | - | 1 | 0.123 | 31.054 | 31.177 | - | 6.550 | - |
| Harrison | 0.330 | 0.093 | 8 | 0.169 | 19.984 | 20.576 | 1,007,900 | 32.228 | - |
| Hinds | 1.028 | 0.128 | 11 | 0.494 | 17.678 | 19.328 | 1,060,500 | 89.588 | 2,157,600 |
| Holmes | 0.052 | 0.160 | 3 | 0.300 | 34.744 | 35.256 | 441,900 | 0.074 | - |
| Humphreys | 4.069 | 0.018 | 3 | 0.527 | 3.558 | 8.172 | - | 0.124 | 696,600 |
| Issaquena | - | - | - | - | - | - | - | 5.003 | - |
| Itawamba | 0.400 | - | 8 | 0.409 | 6.649 | 7.458 | 1,942,800 | 71.947 | 1,228,900 |
| Jackson | 0.223 | - | 2 | 0.054 | - | 0.277 | 1,562,800 | 20.866 | - |
| Jasper | 2.870 | 0.117 | 8 | 0.186 | - | 3.173 | - | 0.046 | - |
| Jefferson | 0.915 | 0.331 | 6 | 0.193 | 2.443 | 3.882 | 1,649,800 | 39.899 | - |
| Jefferson Davis | 0.561 | - | 3 | 0.077 | - | 0.638 | - | 105.093 | 179,000 |
| Jones | 1.060 | - | 6 | 0.402 | 10.106 | 11.568 | - | 196.627 | - |
| Kemper | 1.746 | 1.982 | 5 | 0.131 | - | 3.859 | 604,600 | 86.654 | 1,700,700 |
| Lafayette | 1.327 | 0.392 | 12 | 1.587 | 4.392 | 7.698 | - | 18.294 | 497,100 |
| Lamar | 0.184 | - | 2 | 0.095 | 24.891 | 25.170 | 386,300 | 31.219 | 922,500 |
| Lauderdale | 2.004 | - | 10 | 0.635 | - | 2.639 | - | 4.543 | 2,414,500 |
| Lawrence | 5.659 | 0.237 | 10 | 1.174 | 7.549 | 14.619 | 614,300 | 56.627 | 167,700 |
| Leake | 0.117 | - | 2 | 0.487 | 22.700 | 23.304 | - | 54.436 | - |
| Lee | 1.890 | - | 5 | 0.537 | - | 2.427 | 810,400 | 0.454 | 2,869,500 |
| Leflore | 5.004 | - | - | - | 2.940 | 7.944 | - | 50.830 | - |
| Lincoln | 11.229 | 0.467 | 6 | 0.125 | 1.335 | 13.156 | - | 134.518 | - |
| Lowndes | 10.015 | 0.525 | 3 | 0.052 | 0.470 | 11.062 | 1,351,500 | 86.867 | - |
| Madison | 0.496 | 0.166 | 4 | 0.080 | 5.147 | 5.889 | - | 8.022 | - |
| Marion | 2.159 | 0.238 | 1 | 0.045 | - | 2.442 | 2,119,600 | 0.179 | - |

IMPROVEMENTS LET TO CONTRACT FROM JULY 1, 2013 THRU JUNE 30, 2014

| County | Construction Miles and Cost | | | | | | | Reseal & Maintenance | |
|--------------|-----------------------------|--------|---------|--------|---------|---------|------------|----------------------|------------|
| | Grading & | | Bridges | | Resur- | Total | Cost | Miles | Cost |
| Surfacing | Gravel | # | Miles | facing | Miles | | | | |
| Marshall | 7.872 | 0.252 | 4 | 0.120 | 2.451 | 10.695 | - | 97.860 | 597,800 |
| Monroe | 0.920 | 0.141 | 4 | 0.180 | 10.945 | 12.186 | - | 48.105 | 2,680,000 |
| Montgomery | - | 0.529 | 5 | 0.349 | 2.069 | 2.947 | 1,055,800 | 6.642 | - |
| Neshoba | 3.078 | - | 4 | 0.124 | - | 3.202 | - | 55.328 | - |
| Newton | 0.342 | 0.072 | 5 | 0.114 | - | 0.528 | 454,000 | 62.688 | - |
| Noxubee | - | 0.110 | 1 | 0.026 | - | 0.136 | 1,842,600 | 47.010 | - |
| Oktibbeha | 2.929 | - | - | - | 9.509 | 12.438 | 2,171,800 | 67.855 | - |
| Panola | 0.320 | 0.174 | 9 | 0.645 | 2.524 | 3.663 | 618,000 | 73.441 | - |
| Pearl River | 1.507 | 0.072 | 13 | 0.425 | 5.109 | 7.113 | - | 118.776 | 1,777,000 |
| Perry | 9.747 | 0.070 | 7 | 0.208 | - | 10.025 | 1,201,300 | 34.691 | - |
| Pike | 2.984 | 0.115 | 5 | 0.467 | - | 3.566 | 2,867,400 | 75.480 | - |
| Pontotoc | 1.254 | 0.651 | 4 | 0.120 | - | 2.025 | - | 24.660 | - |
| Prentiss | 1.010 | - | 6 | 0.215 | 7.258 | 8.483 | 635,456 | 14.357 | - |
| Quitman | 0.546 | 0.030 | 2 | 0.210 | 9.151 | 9.937 | 1,313,600 | - | - |
| Rankin | 6.297 | - | - | - | 73.595 | 79.892 | - | - | - |
| Scott | 0.196 | 0.612 | 4 | 0.753 | - | 1.561 | 1,653,200 | 65.403 | 1,957,400 |
| Sharkey | - | 0.151 | 1 | 0.018 | 3.854 | 4.023 | - | 7.038 | - |
| Simpson | 8.264 | 0.245 | 4 | 0.405 | 1.893 | 10.807 | 747,200 | 75.056 | - |
| Smith | 1.359 | 0.670 | 7 | 0.147 | - | 2.176 | - | 36.372 | - |
| Stone | 2.157 | - | 4 | 0.050 | 7.263 | 9.470 | 639,300 | 54.964 | - |
| Sunflower | 4.395 | 0.014 | 4 | 0.359 | 3.612 | 8.380 | - | 50.667 | - |
| Tallahatchie | 6.174 | 0.151 | 2 | 0.228 | 3.650 | 10.203 | - | 11.797 | - |
| Tate | 0.126 | 0.145 | 7 | 0.249 | - | 0.520 | - | 11.729 | - |
| Tippah | 1.567 | 0.118 | 5 | 0.433 | - | 2.118 | 1,504,500 | 60.862 | - |
| Tishomingo | 0.032 | 0.030 | 4 | 0.040 | 3.050 | 3.152 | 785,100 | 43.319 | 914,900 |
| Tunica | 0.052 | - | 2 | 0.047 | - | 0.099 | - | 9.221 | 1,720,400 |
| Union | 0.169 | - | 2 | 0.156 | - | 0.325 | - | 64.214 | 1,580,200 |
| Walthall | 0.059 | 0.092 | 5 | 0.357 | 59.710 | 60.218 | 1,621,400 | 80.810 | 202,600 |
| Warren | 3.114 | - | 6 | 0.650 | - | 3.764 | - | 6.128 | 699,000 |
| Washington | 0.904 | 0.360 | 12 | 0.601 | 10.246 | 12.111 | - | - | - |
| Wayne | 0.087 | 0.155 | 2 | 0.025 | 67.704 | 67.971 | - | 55.999 | - |
| Webster | 0.354 | 0.333 | 7 | 0.295 | - | 0.982 | - | 66.224 | - |
| Wilkinson | 0.096 | 0.480 | 4 | 0.223 | - | 0.799 | 419,800 | 49.917 | - |
| Winston | 7.511 | 3.081 | 9 | 0.281 | 4.066 | 14.939 | 1,380,900 | 59.516 | - |
| Yalobusha | 0.172 | 0.081 | 4 | 0.389 | - | 0.642 | 167,400 | 35.563 | 1,208,600 |
| Yazoo | 12.027 | 0.226 | 4 | 0.212 | - | 12.465 | - | 100.530 | 11,547,800 |
| Statewide | - | - | - | - | - | - | 5,540,000 | - | - |
| Totals | 174.906 | 18.235 | 375 | 21.705 | 739.756 | 954.603 | 53,935,148 | 3,562.352 | 42,268,200 |

IMPROVEMENTS MADE ON THE STATE AID SYSTEM FROM JUNE 30, 1950, THRU JUNE 30, 2014

| County | State Aid Mileage | | | State Aid Improvements | | | | | | | Funds Expended or Obligated | |
|-----------|-------------------|---------------------|---------------|------------------------|-------------------|--------------------|--------------------|--------------------|-------------------------|--------------|-----------------------------|------------|
| | Total Allocation | Actually Designated | Paved Mileage | Grading & Grav. Surf. | Brs. Structural # | Total Actual Miles | Overlay or Resurf. | Total Construction | Surfacing Reseal/Maint. | To Contact | | |
| | | | | | | | | | | Construction | Reseal/Mant. | |
| Adams | 244.42 | 192.6 | 48.436 | 1.362 | 19 | 0.604 | 50.402 | 37.698 | 88.100 | 139.828 | 22,429,940 | 3,786,056 |
| Alcorn | 280.16 | 185.1 | 117.431 | 2.162 | 56 | 1.285 | 120.878 | 27.107 | 147.985 | 323.697 | 23,440,176 | 9,482,421 |
| Amite | 398.65 | 245.35 | 191.143 | 3.889 | 56 | 1.742 | 196.774 | 96.894 | 293.668 | 622.345 | 33,242,070 | 9,845,745 |
| Attala | 345.03 | 250.85 | 145.107 | 9.208 | 73 | 1.952 | 156.267 | 34.486 | 190.753 | 602.856 | 34,043,606 | 10,798,298 |
| Benton | 205.57 | 168.6 | 105.135 | 9.702 | 39 | 1.047 | 115.884 | - | 115.884 | 201.347 | 18,130,936 | 4,113,102 |
| Bolivar | 339.41 | 202.7 | 105.969 | 7.281 | 49 | 0.963 | 114.213 | 80.137 | 194.350 | 248.346 | 29,908,454 | 7,134,849 |
| Calhoun | 321.72 | 234.12 | 129.343 | 15.969 | 94 | 1.684 | 146.996 | 47.753 | 194.749 | 518.875 | 31,166,853 | 6,562,283 |
| Carroll | 300.74 | 216.15 | 110.251 | 13.243 | 72 | 1.906 | 125.400 | 92.912 | 218.312 | 347.281 | 25,223,735 | 8,988,212 |
| Chickasaw | 247.19 | 194.08 | 109.947 | 15.389 | 67 | 1.434 | 126.770 | 0.463 | 127.233 | 325.723 | 22,320,158 | 5,873,093 |
| Choctaw | 235.68 | 199.7 | 111.992 | 30.632 | 87 | 1.602 | 144.226 | 0.225 | 144.451 | 380.416 | 21,227,658 | 8,826,006 |
| Claiborne | 240.12 | 158.48 | 94.272 | 10.000 | 25 | 1.202 | 105.474 | 91.931 | 197.405 | 244.529 | 23,981,088 | 6,513,477 |
| Clarke | 370.67 | 286.9 | 206.547 | 0.934 | 58 | 1.658 | 209.139 | 32.970 | 242.109 | 713.510 | 29,557,629 | 10,555,958 |
| Clay | 223.9 | 164.3 | 97.134 | 10.255 | 70 | 2.003 | 109.392 | 47.358 | 156.750 | 311.478 | 34,044,534 | 7,462,347 |
| Coahoma | 340.37 | 216.1 | 151.098 | 1.345 | 27 | 0.793 | 153.236 | 167.866 | 321.102 | 366.866 | 26,785,668 | 5,084,101 |
| Copiah | 442.94 | 387.7 | 240.538 | 4.791 | 112 | 3.275 | 248.604 | 85.778 | 334.382 | 645.405 | 45,071,937 | 10,616,275 |
| Covington | 289.12 | 223.8 | 147.679 | 2.581 | 81 | 2.533 | 152.793 | 13.904 | 166.697 | 587.549 | 28,326,013 | 9,402,451 |
| DeSoto | 345.17 | 197.4 | 100.545 | 20.603 | 51 | 0.981 | 122.129 | 36.685 | 158.814 | 168.385 | 33,824,057 | 9,778,975 |
| Forrest | 319.89 | 261.2 | 63.903 | 5.608 | 71 | 2.122 | 71.633 | 85.944 | 157.577 | 354.508 | 27,109,490 | 9,338,005 |
| Franklin | 398.65 | 225.88 | 163.139 | 1.397 | 43 | 2.019 | 166.555 | 37.215 | 203.770 | 453.142 | 31,180,424 | 8,775,854 |
| George | 258.73 | 177.3 | 124.832 | 5.299 | 51 | 1.224 | 131.355 | 11.302 | 142.657 | 335.003 | 22,653,956 | 9,349,287 |
| Greene | 412.64 | 290.2 | 207.278 | 9.604 | 93 | 2.268 | 219.150 | 58.250 | 277.400 | 458.183 | 38,845,034 | 8,577,480 |
| Grenada | 214.27 | 165.28 | 102.065 | 1.914 | 31 | 0.740 | 104.719 | 25.741 | 130.460 | 459.199 | 32,551,536 | 7,410,014 |
| Hancock | 251.92 | 163.2 | 96.943 | 10.139 | 42 | 0.798 | 107.880 | 51.455 | 159.335 | 189.897 | 38,022,365 | 7,575,616 |
| Harrison | 414.63 | 264.6 | 134.052 | 1.964 | 55 | 2.053 | 138.069 | 42.171 | 180.240 | 414.321 | 48,093,247 | 9,591,610 |
| Hinds | 440.95 | 359 | 248.550 | 1.632 | 47 | 1.778 | 251.960 | 105.198 | 357.158 | 331.789 | 46,597,089 | 9,182,229 |
| Holmes | 445.27 | 322.4 | 222.537 | 18.541 | 63 | 1.710 | 242.788 | 100.767 | 343.555 | 679.125 | 35,678,821 | 11,426,224 |
| Humphreys | 223.26 | 204.9 | 115.086 | 16.243 | 35 | 1.103 | 132.432 | 10.701 | 143.133 | 253.559 | 17,282,596 | 7,548,969 |
| Issaquena | 128.89 | 91.1 | 36.131 | 21.852 | 7 | 0.161 | 58.144 | 28.007 | 86.151 | 105.077 | 6,572,316 | 4,734,432 |

IMPROVEMENTS MADE ON THE STATE AID SYSTEM FROM JUNE 30, 1950, THRU JUNE 30, 2014

| County | State Aid Mileage | | | State Aid Improvements | | | | | | | Funds Expended or Obligated To Contact | |
|-----------------|-------------------|---------------------|---------------|------------------------|-------------------|--------------------|--------------------|--------------------|-------------------------|--------------|--|--------------|
| | Total Allocation | Actually Designated | Paved Mileage | Grading & Grav. Surf. | Brs. Structural # | Total Actual Miles | Overlay or Resurf. | Total Construction | Surfacing Reseal/Maint. | Construction | | Reseal/Mant. |
| | | | | | | | | | | Miles | Miles | |
| Itawamba | 326.98 | 222.35 | 161.351 | 6.298 | 87 | 2.102 | 169.751 | 20.088 | 189.839 | 403.828 | 31,357,043 | 8,398,368 |
| Jackson | 351.66 | 146.3 | 60.416 | 6.723 | 30 | 1.432 | 68.571 | 7.893 | 76.464 | 108.856 | 29,653,892 | 7,687,410 |
| Jasper | 307.73 | 291.4 | 175.487 | 4.395 | 82 | 2.036 | 181.918 | 26.025 | 207.943 | 387.182 | 30,031,515 | 6,713,250 |
| Jefferson | 251.58 | 162.83 | 75.721 | 6.676 | 50 | 1.241 | 83.638 | 23.699 | 107.337 | 315.891 | 18,274,018 | 8,299,677 |
| Jefferson Davis | 221.47 | 189.39 | 113.336 | 3.829 | 57 | 1.310 | 118.475 | 46.999 | 165.474 | 464.987 | 20,679,154 | 7,746,370 |
| Jones | 502.2 | 329.3 | 179.653 | 30.507 | 82 | 2.660 | 212.820 | 59.545 | 272.365 | 718.951 | 40,773,961 | 12,813,857 |
| Kemper | 382.33 | 288.35 | 206.962 | 32.665 | 90 | 1.687 | 241.314 | 29.968 | 271.282 | 447.422 | 32,137,180 | 8,317,448 |
| Lafayette | 341.95 | 186.25 | 109.343 | 8.802 | 109 | 3.464 | 121.609 | 35.438 | 157.047 | 355.393 | 30,944,699 | 8,050,353 |
| Lamar | 318.1 | 207.78 | 110.567 | 1.474 | 53 | 1.615 | 113.656 | 112.341 | 225.997 | 508.670 | 30,181,338 | 10,934,240 |
| Lauderdale | 439.39 | 412.3 | 248.922 | 1.619 | 71 | 1.942 | 252.483 | 96.368 | 348.851 | 466.253 | 30,411,749 | 10,873,598 |
| Lawrence | 261.1 | 207.72 | 125.919 | 8.414 | 68 | 2.581 | 136.914 | 73.548 | 210.462 | 456.453 | 52,276,919 | 7,347,771 |
| Leake | 296.54 | 224.52 | 146.905 | 11.073 | 62 | 1.942 | 159.920 | 38.697 | 198.617 | 387.453 | 30,678,879 | 6,597,869 |
| Lee | 343.24 | 194.4 | 109.705 | 17.876 | 76 | 1.977 | 129.558 | 19.648 | 149.206 | 357.368 | 32,802,040 | 15,103,546 |
| Leflore | 311.14 | 275.9 | 139.413 | 5.456 | 59 | 2.585 | 147.454 | 9.928 | 157.382 | 572.890 | 29,414,796 | 10,419,670 |
| Lincoln | 433.62 | 358.8 | 209.044 | 4.654 | 74 | 1.950 | 215.648 | 32.931 | 248.579 | 635.983 | 45,871,946 | 9,933,352 |
| Lowndes | 334.88 | 203.2 | 122.257 | 7.491 | 63 | 1.377 | 131.125 | 119.007 | 250.132 | 377.376 | 35,368,188 | 7,793,687 |
| Madison | 369.85 | 285.3 | 154.941 | 3.518 | 59 | 1.433 | 159.892 | 57.271 | 217.163 | 429.229 | 29,473,193 | 7,910,239 |
| Marion | 331.94 | 286.1 | 185.490 | 4.076 | 63 | 1.271 | 190.837 | 92.845 | 283.682 | 607.402 | 24,733,790 | 10,290,772 |
| Marshall | 315.61 | 211 | 123.760 | 8.683 | 44 | 1.602 | 134.045 | 13.985 | 148.030 | 277.673 | 40,151,634 | 6,587,738 |
| Monroe | 328.95 | 206.2 | 143.269 | 7.595 | 49 | 1.084 | 151.948 | 37.745 | 189.693 | 404.947 | 29,165,275 | 9,897,723 |
| Montgomery | 251.78 | 210.85 | 89.916 | 24.752 | 85 | 1.858 | 116.526 | 16.049 | 132.575 | 286.416 | 24,090,781 | 7,954,554 |
| Neshoba | 377.67 | 310.4 | 185.980 | 34.354 | 91 | 1.638 | 221.972 | 9.884 | 231.856 | 448.031 | 31,915,888 | 9,375,892 |
| Newton | 296.86 | 273 | 170.733 | 6.476 | 72 | 1.162 | 178.371 | 12.234 | 190.605 | 381.285 | 26,131,908 | 7,366,948 |
| Noxubee | 317.05 | 222 | 127.970 | 6.607 | 57 | 1.151 | 135.728 | 19.013 | 154.741 | 379.604 | 27,460,361 | 5,895,890 |
| Oktibbeha | 285.13 | 208.8 | 134.308 | 10.305 | 24 | 0.411 | 145.024 | 30.737 | 175.761 | 476.003 | 25,157,108 | 6,882,287 |
| Panola | 380.4 | 250.4 | 157.748 | 6.586 | 63 | 1.819 | 166.153 | 116.497 | 282.650 | 485.831 | 36,972,462 | 6,425,967 |
| Pearl River | 410.01 | 242 | 147.493 | 14.349 | 72 | 2.209 | 164.051 | 49.026 | 213.077 | 652.398 | 36,226,967 | 11,692,120 |
| Perry | 286.75 | 226.5 | 97.467 | 6.110 | 69 | 1.671 | 105.248 | 32.700 | 137.948 | 442.908 | 28,606,339 | 8,664,906 |

IMPROVEMENTS MADE ON THE STATE AID SYSTEM FROM JUNE 30, 1950, THRU JUNE 30, 2014

| County | State Aid Mileage | | State Aid Improvements | | | | | | | | | | Funds Expended or Obligated To Contact | |
|--------------|-------------------|---------------------|------------------------|-----------------------|-------------------|--------------------|--------------------|--------------------|-------------------------|--------------|---------------|-------------|--|--------------|
| | Total Allocation | Actually Designated | Paved Mileage | Grading & Grav. Surf. | Brs. Structural # | Total Actual Miles | Overlay or Resurf. | Total Construction | Surfacing Reseal/Maint. | Construction | Reseal/Mant. | To Contact | | |
| | | | | | | | | | | | | Miles | Miles | Construction |
| Pike | 338.5 | 253.9 | 134.782 | 15.627 | 62 | 1.733 | 152.142 | 7.637 | 159.779 | 538.055 | 26,577,990 | 11,780,338 | | |
| Pontotoc | 267.15 | 180.09 | 99.297 | 10.876 | 28 | 0.683 | 110.856 | 4.712 | 115.568 | 256.551 | 16,548,527 | 8,246,626 | | |
| Prentiss | 281.65 | 206.25 | 124.065 | 20.356 | 73 | 1.560 | 145.981 | 29.750 | 175.731 | 250.281 | 25,904,357 | 6,854,510 | | |
| Quitman | 217.38 | 184.6 | 86.600 | 6.268 | 51 | 1.556 | 94.424 | 33.643 | 128.067 | 133.779 | 20,494,796 | 4,544,994 | | |
| Rankin | 541.49 | 270.2 | 143.255 | 10.242 | 81 | 1.523 | 155.020 | 165.762 | 320.782 | 284.887 | 59,883,825 | 9,143,163 | | |
| Scott | 310.55 | 223.3 | 135.873 | 15.732 | 88 | 1.972 | 153.577 | 11.786 | 165.363 | 424.579 | 23,364,774 | 12,345,032 | | |
| Sharkey | 164.28 | 111.6 | 73.556 | 14.543 | 16 | 0.486 | 88.585 | 40.846 | 129.431 | 169.194 | 12,372,599 | 7,354,896 | | |
| Simpson | 348.73 | 286.75 | 179.918 | 4.117 | 83 | 2.457 | 186.492 | 22.089 | 208.581 | 595.188 | 34,013,955 | 8,833,803 | | |
| Smith | 321.72 | 260 | 184.169 | 11.297 | 73 | 1.963 | 197.429 | 14.211 | 211.640 | 509.705 | 32,651,312 | 6,897,592 | | |
| Stone | 223.6 | 181.9 | 127.626 | 2.088 | 37 | 0.701 | 130.415 | 50.856 | 181.271 | 350.533 | 24,147,364 | 4,650,460 | | |
| Sunflower | 412.64 | 249.8 | 142.237 | 22.208 | 55 | 1.919 | 166.364 | 58.876 | 225.240 | 286.888 | 39,726,745 | 6,751,108 | | |
| Tallahatchie | 296.07 | 278.1 | 147.014 | 22.051 | 42 | 1.523 | 170.588 | 26.991 | 197.579 | 472.460 | 29,200,312 | 7,606,635 | | |
| Tate | 244.16 | 164.8 | 51.400 | 17.563 | 65 | 1.923 | 70.886 | 25.072 | 95.958 | 170.643 | 19,472,978 | 5,929,506 | | |
| Tippah | 290.95 | 217.3 | 139.723 | 13.772 | 55 | 1.222 | 154.717 | 9.368 | 164.085 | 299.590 | 27,619,486 | 5,764,769 | | |
| Tishomingo | 263.67 | 209.8 | 122.578 | 4.137 | 59 | 1.215 | 127.930 | 66.023 | 193.953 | 192.786 | 25,121,173 | 8,834,519 | | |
| Tunica | 242.45 | 204.2 | 139.241 | 12.521 | 80 | 0.629 | 152.391 | 92.584 | 244.975 | 203.571 | 19,504,917 | 5,884,191 | | |
| Union | 277.64 | 188.1 | 107.272 | 16.112 | 48 | 1.163 | 124.547 | 17.358 | 141.905 | 234.215 | 27,398,823 | 5,363,487 | | |
| Walthall | 274.85 | 218.86 | 126.916 | 3.221 | 73 | 1.682 | 131.819 | 87.873 | 219.692 | 560.420 | 21,034,339 | 11,469,829 | | |
| Warren | 284.23 | 193.2 | 70.877 | 8.015 | 35 | 1.412 | 80.304 | 47.143 | 127.447 | 234.269 | 27,426,828 | 4,910,456 | | |
| Washington | 377.67 | 359.5 | 78.712 | 0.859 | 66 | 2.289 | 81.860 | 81.520 | 163.380 | 105.026 | 40,547,311 | 5,186,288 | | |
| Wayne | 410.31 | 372.1 | 221.267 | 11.594 | 72 | 1.761 | 234.622 | 76.001 | 310.623 | 688.383 | 33,171,942 | 11,940,471 | | |
| Webster | 277.42 | 209.2 | 107.277 | 7.596 | 82 | 1.512 | 116.385 | 5.187 | 121.572 | 598.832 | 23,225,374 | 8,037,385 | | |
| Wilkinson | 223.8 | 152.9 | 95.150 | 2.116 | 33 | 1.042 | 98.308 | 39.793 | 138.101 | 324.112 | 19,676,441 | 5,755,472 | | |
| Winston | 296.54 | 280.55 | 205.695 | 37.926 | 71 | 1.405 | 245.026 | 27.159 | 272.185 | 327.244 | 35,509,799 | 4,111,292 | | |
| Yalobusha | 212.75 | 176.7 | 99.716 | 1.365 | 50 | 1.226 | 102.307 | - | 102.307 | 520.915 | 18,609,039 | 7,616,834 | | |
| Yazoo | 400.98 | 320.5 | 223.433 | 11.691 | 41 | 1.680 | 236.804 | 104.119 | 340.923 | 907.759 | 31,602,683 | 11,263,562 | | |
| Totals | 25,857.04 | 19,036.53 | 11,108.808 | 848.795 | 4,954 | 130.086 | 12,087.690 | 3,837.386 | 15,925.076 | 32,658.787 | 2,423,062.092 | 671,386.093 | | |

STATE AID PROGRAM CONSTRUCTION AND ENGINEERING DISBURSEMENTS BY COUNTY AND SYSTEM FROM JULY 1, 2013 THRU JUNE 30, 2014

| COUNTY | RR CROSSING | MDOT | HIGH RISK | RURAL | ACCESS | APPALACHIAN | PUBLIC | DEFENSE | EMERGENCY | RELIEF | LOCAL | STATE AID | SURFACE | BRIDGE | TOTALS |
|------------|---------------------------------------|--------------------|--------------------------|--------------------------------|-------------------------|--------------------------|------------------------------|---------|------------|------------|------------------|-----------------|--------------------------|--------------|-----------|
| | RRS/STP-C & RR SIGNAL RRP/STP-S | System MS 19 | RURAL ROAD PROGRAM | SECONDARY GRADE RSG/STPG | HIGHWAY LAKES AHL | ACCESS HIGHWAY APL | LAND HIGHWAYS EFLH/PLH | AGMC | RELIEF | CONGESTION | ROAD PROJECTS | PROJECTS SAP | TRANSPORTATION COUNTY | STP | BR |
| Adams | System 01 & 02 | 19 | 25 | 32 | 34 | 36 | 62 & 63 | 64 | 66 | 68 | 80 | 81 | 82 & 46 | 85 | 755,950 |
| Alcorn | | | | | | 37,868.00 | | | | | | 488,229.38 | | 267,720.53 | 1,803,297 |
| Amite | | | | | | | | | | | | 217,678.61 | | 1,547,750.87 | 1,908,452 |
| Attala | | | | | | | | | | | | 1,760,662.21 | | 147,790.23 | 1,384,965 |
| Benton | | | 439,993.13 | | | | 26,689.45 | | | | | 697,082.97 | 679,423.95 | 8,458.00 | 1,586,117 |
| Bolivar | | 400,461.54 | | | | | | | | | 29,399.51 | 1,369,454.26 | | 569,743.35 | 1,799,315 |
| Calhoun | | | | | | | | | | | | 834,874.87 | 256.80 | 69,550.11 | 1,404,875 |
| Carroll | | | | | | | | | | | 40,950.00 | 33,528.88 | 15,847.20 | 445,230.85 | 118,926 |
| Chickasaw | | | | | | 60,739.25 | 7,770.00 | | | | 7,957.39 | 246,517.27 | 1,368,017.87 | 878,577.95 | 2,169,225 |
| Choctaw | | | | | | | | | | | | 715,098.33 | | | 1,601,634 |
| Claiborne | | | | | | | | | | | | 82,230.68 | 5,640.00 | | 87,871 |
| Clarke | | | | | | | | | | | | 1,269,622.82 | 2,212.16 | | 1,271,835 |
| Clay | | 104.00 | | | | | | | | | | 1,045,412.04 | 140,449.51 | 37,606.81 | 1,223,572 |
| Coahoma | | 1,500.00 | 57,458.50 | | | | | | | | 153,528.46 | 287,768.56 | | 1,500.00 | 501,756 |
| Copiah | | 57,597.97 | | | | | | | | | 191,007.93 | | | | 248,606 |
| Covington | | | 543,880.53 | | | | | | | | | 55,033.31 | 431,270.51 | 353,860.10 | 1,384,044 |
| DeSoto | | | | | | | | | | | | 1,314,914.26 | 8,374.79 | 374,397.29 | 1,697,686 |
| Forrest | | | | | | | | | | | | 1,899,734.48 | 203,244.00 | 29,136.16 | 2,132,115 |
| Franklin | | | | | | | | | | | | | | 92,497.90 | 92,498 |
| George | | | | | | | | | | | | 1,899,039.53 | 19,755.32 | 1,483,048.67 | 3,401,844 |
| Greene | | | | | | | | | | | | 1,098,652.48 | 7,734.16 | 1,500.00 | 1,107,887 |
| Grenada | | 80,036.00 | | | | | | | | | 340,012.15 | | | | 420,048 |
| Hancock | | | | | | | | | (9,485.00) | | | | | | (9,485) |
| Harrison | | | 410,432.98 | | | | 144.00 | | | | | 2,659,463.51 | | | 3,070,040 |
| Hinds | | 2,381,452.43 | | | | | | | | | | 675,282.34 | | | 3,056,735 |
| Holmes | | 13,061.86 | | | | | | | | | | 904,280.65 | 350.00 | 165,173.90 | 1,082,866 |
| Humphreys | | 1,036.87 | | | | | | | | | | 985,875.69 | | | 986,913 |
| Issaquena | | | | | | | | | | | | | | | 0 |
| Itawamba | | 559,356.28 | | | | | | | | | | 1,160,113.77 | 367,844.19 | 655,980.85 | 2,183,939 |
| Jackson | | | | | | | | | | | | 134,136.37 | | 7,520.00 | 701,013 |
| Jasper | | | | | | | 7,965.00 | | | | | 875,429.89 | 534,756.56 | 265,907.54 | 1,684,059 |
| Jefferson | | | | | | | | | | | | 667,486.46 | | 96,871.17 | 764,358 |
| Jeff Davis | | | | | | | | | | | | 905,104.77 | 3,175.24 | 24,834.03 | 933,114 |
| Jones | | | 83,991.09 | | | | | | | | | 1,115,146.73 | 3,690.16 | | 1,202,828 |
| Kemper | | | | | | | | | | | | 1,361,264.68 | | 1,603.60 | 1,362,868 |
| Lafayette | | | | | | | | | | | | 382,010.08 | 423.65 | 1,082,870.92 | 1,465,305 |
| Lamar | | 3,157,726.49 | | | | | | | | | | 414,683.23 | 174,829.53 | 69,499.37 | 3,816,739 |
| Lauderdale | | | | | | | | | | | | 1,237,622.65 | 60,616.68 | 27,184.69 | 1,325,424 |
| Lawrence | | 4,745.00 | | | | | | | | | | 93,085.19 | 571,395.20 | | 669,225 |
| Leake | | | | | | | | | | | | 318,864.13 | | 94,715.80 | 413,580 |
| Lee | | | | | | | | | | | | 784,948.66 | 675,080.44 | 885,229.44 | 2,378,170 |
| Leflore | | | | | | | | | | | 40,867.63 | 1,481,601.75 | | | 1,839,258 |
| Lincoln | | 20,311.00 | | | | | 316,789.11 | | | | | 1,458,017.13 | | 37,102.70 | 1,515,431 |

OFFICE OF STATE AID ROAD CONSTRUCTION

FY 2014 ANNUAL REPORT

STATE AID PROGRAM CONSTRUCTION AND ENGINEERING DISBURSEMENTS BY COUNTY AND SYSTEM FROM JULY 1, 2013 THRU JUNE 30, 2014

| COUNTY | RR CROSSING | MDOT | HIGH RISK | RURAL | ACCESS | APPALACHIAN | PUBLIC | DEFENSE | EMERGENCY | LOCAL | STATE AID | SURFACE | BRIDGE | TOTALS | |
|-----------------|---------------------------------------|------------------------|--------------------------|--------------------------------|-------------------------|--------------------------|------------------------------|---------|--------------------------------|----------------------------|---------------|---------------------------------|-------------------|--------------|--------------|
| | RRS/STP-C & RR SIGNAL RRP/STP-S | HIGH PRIORITY MS | RURAL ROAD PROGRAM | SECONDARY GRADE RSG/STPG | HIGHWAY LAKES AHL | ACCESS HIGHWAY APL | LAND HIGHWAYS EFLH/PLH | AGMC | RELIEF CONGESTION RELIEF | SYSTEM ROAD PROJECTS | SYSTEM SAP | TRANSPORTATION COUNTY STP | REPLACEMENT BR | BY COUNTY | |
| Lowndes | System 01 & 02 | 19 | 25 | 32 | 34 | 36 | 62 & 63 | 64 | 66 | 68 | 80 | 81 | 82 & 46 | 85 | 201,733.89 |
| Madison | | | | | | | | | | | | | | | 5,827.44 |
| Marion | | | | | | | | | | | | | | | 1,059,681.96 |
| Marshall | | 74,235.42 | | | | 26,195.22 | | | | | | | | | 1,116,631.42 |
| Monroe | | | | | | | | | | | | | | | 43,534.37 |
| Montgomery | | | | | | | | | | | | | | | 509,788.31 |
| Neshoba | | | | | | | | | | | | | | | 1,983,345.80 |
| Newton | | | 12,616.31 | | | | | | | | | | | | 1,164,519.39 |
| Noxubee | | | | | | 6,553.24 | | | | | | | | | 125,916.00 |
| Okfuskeeta | | 398,002.00 | 3,044.92 | | | | | | | | | | | | 679,055.02 |
| Panola | | | | | | | | | | | | | | | 1,831,347.86 |
| Pearl River | | 99,759.00 | | | | | | | | | | | | | 1,094,700.62 |
| Perry | | 1,140,397.54 | | | | | 128,422.57 | | | | | | | | 539,743.89 |
| Pike | | | | | | | | | | | | | | | 6,620.00 |
| Pontotoc | | | | 38,945.23 | | | | | | | | | | | 3,138.00 |
| Prennis | | | | | | 52,015.00 | | | | | | | | | 456,262.07 |
| Quitman | | 632.93 | | | | | | | | | | | | | 1,112,309.58 |
| Rankin | | 1,738.70 | | | | | | | | | | | | | 4,364,897.28 |
| Scott | | | | | | | | | | | | | | | 995,038.41 |
| Sharkey | | | | | | | | | | | | | | | 214,239.59 |
| Simpson | | | 118,737.96 | | | | | | | | | | | | 89,397.46 |
| Smith | | | | | | | 13,288.12 | | | | | | | | 103,316.27 |
| Stone | | | | 257,571.66 | | | | | | | | | | | 8,634.23 |
| Sunflower | | 21,025.00 | | | | | | | | | | | | | 53,290.94 |
| Tallahatchie | | 22,056.58 | 14,892.87 | | | | | | | | | | | | 865,945.24 |
| Tate | | | | | | | | | | 327,062.34 | | | | | 432,503.05 |
| Tippah | | | | | | | | | | | | | | | 3,225.00 |
| Tishomingo | | | | | | | | | | | | | | | 865,986.08 |
| Tunica | | | | | | | | | | | | | | | 297,873.87 |
| Union | | | | | | 850.00 | | | | | | | | | 1,193,282.41 |
| Walthall | | | | | | | | | | | | | | | 1,580,679.32 |
| Warren | | | | | | | | | | | | | | | 530,609.05 |
| Washington | | 665,149.81 | | | | | | | | | | | | | 833,447.96 |
| Wayne | | | | | | | 19,973.41 | | | | | | | | 1,923,285.55 |
| Webster | | | | | | | | | | | | | | | 1,275,190.78 |
| Wilkinson | | | | | | | | | | | | | | | 103,860.77 |
| Winston | | | | | | | | | | | | | | | 3,957.28 |
| Yalobusha | | | | | | | | | | | | | | | 443,467.39 |
| Yazoo | | | | | | | 1,255,812.36 | | | | | | | | 7,714.60 |
| Service Center* | | | | | | | | | | | | | | | 770,492.33 |
| Statewide** | | | | | | | | | | | | | | | 1,412,450.23 |
| TOTALS BY SY: | 0.00 | 9,100,386 | 1,245,055 | 736,510 | 0 | 210,579 | 1,783,407 | 0 | (9,485) | 0 | 1,724,453 | 9,703,929 | 24,459,110 | 113,808,093 | 5,476,877.11 |

* System 81, Testing Charges paid to Calvert on SAP 99 99 and to Burns & Cooley on SAP 99 100

** System 82, Wetland Mitigation, System 85, Bridge Inspection and Bridge Posting Projects

**LOCAL SYSTEM BRIDGE PROGRAM CONSTRUCTION AND ENGINEERING DISBURSEMENTS
BY COUNTY AND SYSTEM FROM JULY 1, 2013 THRU JUNE 30, 2014**

| COUNTY | LOCAL SYSTEM ROAD PROJECTS | LOCAL SYSTEM BRIDGE PROJECTS | TOTALS BY COUNTY |
|-----------|----------------------------------|------------------------------------|------------------------|
| | System 80 | System 81 | |
| Adams | 0.00 | 3,750.00 | 3,750.00 |
| Alcorn | 0.00 | 125.00 | 125.00 |
| Amite | 0.00 | 1,523,189.93 | 1,523,189.93 |
| Attala | 0.00 | 1,655,289.11 | 1,655,289.11 |
| Benton | 0.00 | 0.00 | 0.00 |
| Bolivar | 0.00 | 73,070.87 | 73,070.87 |
| Calhoun | 0.00 | 145,517.47 | 145,517.47 |
| Carroll | 0.00 | 377,591.82 | 377,591.82 |
| Chickasaw | 0.00 | 13,866.97 | 13,866.97 |
| Choctaw | 0.00 | 25,865.21 | 25,865.21 |
| Claiborne | 0.00 | 0.00 | 0.00 |
| Clarke | 0.00 | 330,308.86 | 330,308.86 |
| Clay | 0.00 | 160,470.92 | 160,470.92 |
| Coahoma | 153,528.46 | 0.00 | 153,528.46 |
| Copiah | 0.00 | 282,945.48 | 282,945.48 |
| Covington | 0.00 | 94,543.72 | 94,543.72 |
| DeSoto | 0.00 | 117,377.00 | 117,377.00 |
| Forrest | 0.00 | 0.00 | 0.00 |
| Franklin | 0.00 | 0.00 | 0.00 |
| George | 0.00 | 1,204.00 | 1,204.00 |
| Greene | 0.00 | 2,675.00 | 2,675.00 |
| Grenada | 340,012.15 | 0.00 | 340,012.15 |
| Hancock | 0.00 | 0.00 | 0.00 |
| Harrison | 0.00 | 418,166.76 | 418,166.76 |
| Hinds | 0.00 | 866,919.32 | 866,919.32 |
| Holmes | 0.00 | 54,773.80 | 54,773.80 |
| Humphreys | 0.00 | 61,957.79 | 61,957.79 |
| Issaquena | 0.00 | 0.00 | 0.00 |
| Itawamba | 0.00 | 33,910.20 | 33,910.20 |
| Jackson | 0.00 | 289,188.51 | 289,188.51 |
| Jasper | 0.00 | 999.22 | 999.22 |

**LOCAL SYSTEM BRIDGE PROGRAM CONSTRUCTION AND ENGINEERING DISBURSEMENTS
BY COUNTY AND SYSTEM FROM JULY 1, 2013 THRU JUNE 30, 2014**

| COUNTY | LOCAL SYSTEM | LOCAL SYSTEM | TOTALS BY COUNTY |
|-----------------|--------------|--------------|------------------------|
| | ROAD | BRIDGE | |
| | PROJECTS | PROJECTS | |
| | System 80 | System 81 | |
| Jefferson | 0.00 | 25,945.92 | 25,945.92 |
| Jefferson Davis | 0.00 | 114,142.13 | 114,142.13 |
| Jones | 0.00 | 1,753.16 | 1,753.16 |
| Kemper | 0.00 | 162,828.02 | 162,828.02 |
| Lafayette | 0.00 | 318,791.04 | 318,791.04 |
| Lamar | 0.00 | 6,921.05 | 6,921.05 |
| Lauderdale | 0.00 | 106,374.85 | 106,374.85 |
| Lawrence | 0.00 | 25,225.26 | 25,225.26 |
| Leake | 0.00 | 13,746.74 | 13,746.74 |
| Lee | 0.00 | 152,182.37 | 152,182.37 |
| Leflore | 40,867.63 | 0.00 | 40,867.63 |
| Lincoln | 0.00 | 54,665.36 | 54,665.36 |
| Lowndes | 0.00 | 523,463.85 | 523,463.85 |
| Madison | 0.00 | 185,548.06 | 185,548.06 |
| Marion | 0.00 | 7,402.20 | 7,402.20 |
| Marshall | 0.00 | 263,957.13 | 263,957.13 |
| Monroe | 0.00 | 27,033.68 | 27,033.68 |
| Montgomery | 0.00 | 36,433.68 | 36,433.68 |
| Neshoba | 0.00 | 141,782.84 | 141,782.84 |
| Newton | 0.00 | 447,731.43 | 447,731.43 |
| Noxubee | 0.00 | 182,853.37 | 182,853.37 |
| Oktibbeha | 0.00 | 173,974.08 | 173,974.08 |
| Panola | 0.00 | 1,093,784.94 | 1,093,784.94 |
| Pearl River | 0.00 | 320,808.40 | 320,808.40 |
| Perry | 0.00 | 284,054.68 | 284,054.68 |
| Pike | 0.00 | 321,492.44 | 321,492.44 |
| Pontotoc | 0.00 | 51,629.92 | 51,629.92 |
| Prentiss | 0.00 | 381,418.09 | 381,418.09 |
| Quitman | 0.00 | 161,793.99 | 161,793.99 |
| Rankin | 0.00 | 0.00 | 0.00 |
| Scott | 0.00 | 36,165.16 | 36,165.16 |

**LOCAL SYSTEM BRIDGE PROGRAM CONSTRUCTION AND ENGINEERING DISBURSEMENTS
BY COUNTY AND SYSTEM FROM JULY 1, 2013 THRU JUNE 30, 2014**

| COUNTY | LOCAL SYSTEM | LOCAL SYSTEM | TOTALS BY COUNTY |
|-------------------------|----------------|----------------------|------------------------|
| | ROAD | BRIDGE | |
| | PROJECTS | PROJECTS | |
| | System 80 | System 81 | |
| Sharkey | 0.00 | 0.00 | 0.00 |
| Simpson | 0.00 | 492,311.94 | 492,311.94 |
| Smith | 0.00 | 10,983.86 | 10,983.86 |
| Stone | 0.00 | 617,976.82 | 617,976.82 |
| Sunflower | 0.00 | 870,524.73 | 870,524.73 |
| Tallahatchie | 0.00 | 218,282.62 | 218,282.62 |
| Tate | 0.00 | 0.00 | 0.00 |
| Tippah | 0.00 | 30,533.43 | 30,533.43 |
| Tishomingo | 0.00 | 175.00 | 175.00 |
| Tunica | 0.00 | 255,001.34 | 255,001.34 |
| Union | 0.00 | 0.00 | 0.00 |
| Walthall | 0.00 | 56,741.02 | 56,741.02 |
| Warren | 0.00 | 0.00 | 0.00 |
| Washington | 0.00 | 871,591.57 | 871,591.57 |
| Wayne | 0.00 | 17,959.64 | 17,959.64 |
| Webster | 0.00 | 229,945.20 | 229,945.20 |
| Wilkinson | 0.00 | 176,364.18 | 176,364.18 |
| Winston | 0.00 | 0.00 | 0.00 |
| Yalobusha | 0.00 | 72,580.62 | 72,580.62 |
| Yazoo | 0.00 | 72,285.81 | 72,285.81 |
| TOTALS BY SYSTEM | 534,408 | 16,150,868.58 | 16,685,276.82 |