

**LENGTH DATA**

**EXCEPTIONS**  
NONE

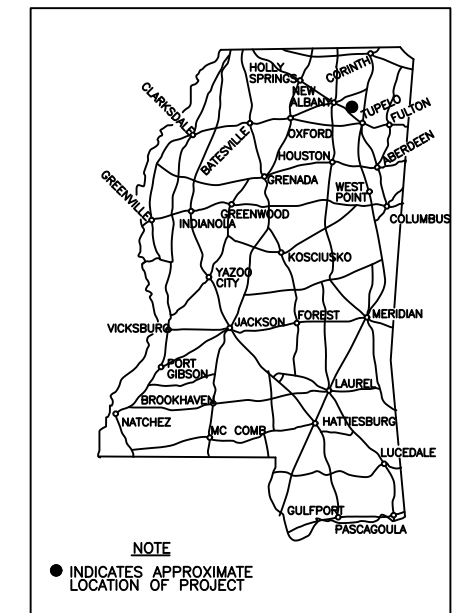
**EQUATIONS**  
NONE

STATE OF MISSISSIPPI  
**OFFICE OF STATE AID ROAD CONSTRUCTION**

PLAN AND PROFILE OF PROPOSED  
**COUNTY HIGHWAY**  
**STATE AID PROJECT NO. SAP-84(1)**

COUNTY ROAD NAME  
MISSISSIPPI COUNTY

INDEX  
FOR INDEX SEE SHEET NO. 2



|                           |         |    |       |    |
|---------------------------|---------|----|-------|----|
| LENGTH OF ROADWAY         | 7666.00 | FT | 1.451 | MI |
| LENGTH OF BRIDGES         | 160.00  | FT | 0.030 | MI |
| LENGTH OF PROJECT (NET)   |         |    | 1.481 | MI |
| LENGTH OF EXCEPTIONS      | 0.00    | FT | 0.000 | MI |
| LENGTH OF PROJECT (GROSS) |         |    | 1.481 | MI |

REPLACES BRIDGE NUMBER SA84-103 WITH SA84-A103  
REPLACES BRIDGE NUMBER SA84-104 WITH SA84-A104

SCALES

|                 |   |            |     |
|-----------------|---|------------|-----|
| PLAN            | 1 | IN. = 100  | FT. |
| PROFILE- HORIZ. | 1 | IN. = 100  | FT. |
| VERT.           | 1 | IN. = 10   | FT. |
| LAYOUT          | 1 | IN. = 1000 | FT. |

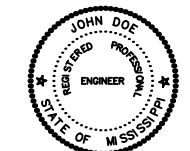
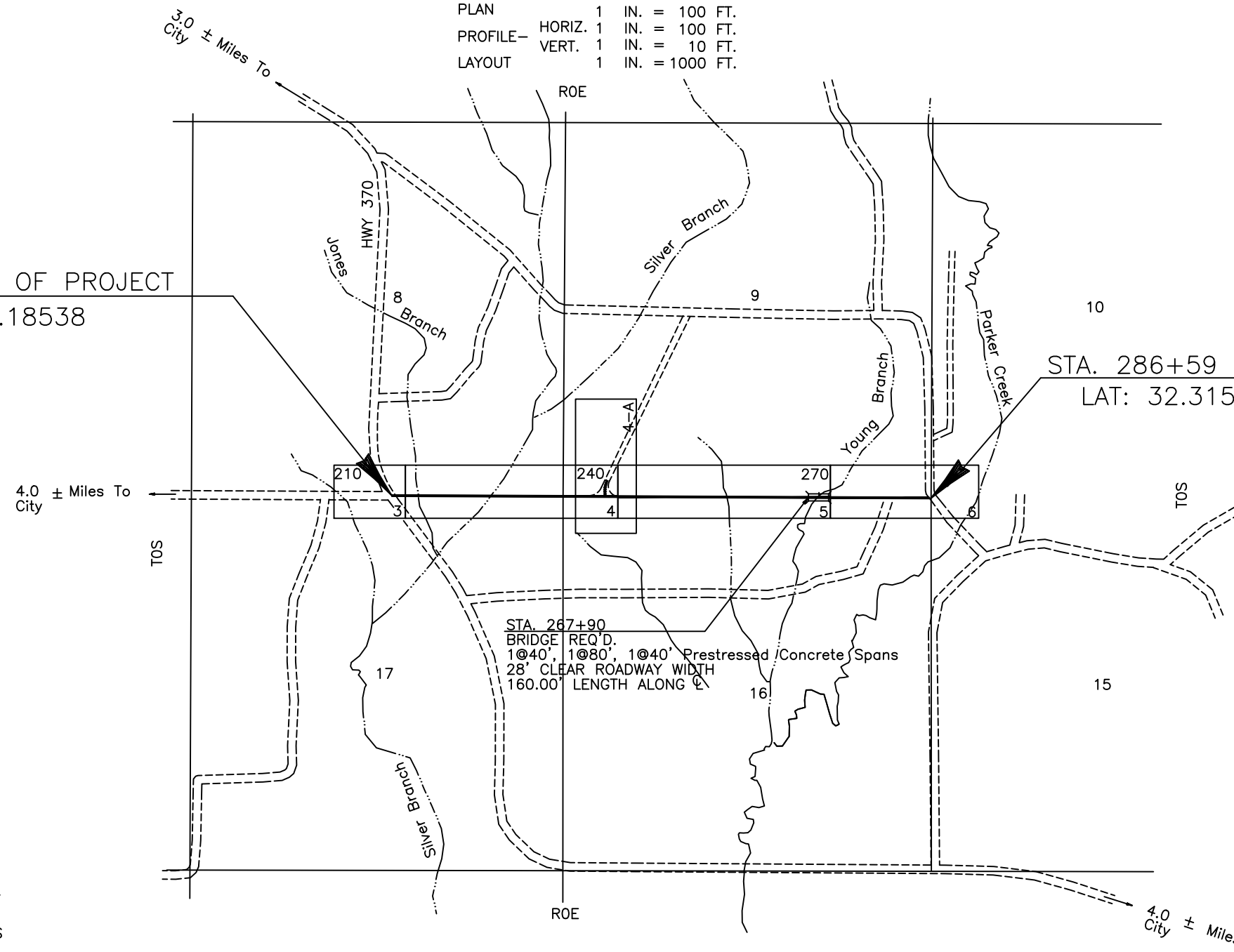
STA. 208+33 BEGINNING OF PROJECT  
LAT: 32.31697, LON: -90.18538

STA. 286+59 END OF PROJECT  
LAT: 32.31542, LON: -90.17565

NOTE TO DESIGNER:

**SAMPLE PLAN DATA**  
Type of Project: *Grade, Drain, Base, and Surfacing*  
Date: *March 2022*  
  
*Notes To Designer are in italics throughout these sample plans and should not be included in project plans.*

**Note:** GPS shall be a decimal expressed to a minimum of 5 decimal places. The GPS data may be located in a table format indicating the location and also located on other approved sheets.



PREPARED BY \_\_\_\_\_ COUNTY ENGINEER DATE \_\_\_\_\_

OFFICE OF STATE AID ROAD CONSTRUCTION APPROVED

STATE AID ENGINEER \_\_\_\_\_ DATE \_\_\_\_\_

MISSISSIPPI STANDARD SPECIFICATIONS CURRENTLY APPROVED BY THE OFFICE OF STATE AID ROAD CONSTRUCTION ARE MADE A PART HEREOF FULLY AND COMPLETELY AS IF ATTACHED HERETO, EXCEPT WHERE SUPERSEDED BY THE SPECIAL PROVISIONS, OR AMENDED BY REVISIONS

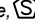


SUMMARY OF QUANTITIES

| PAY ITEM NO.              | PAY ITEM                                                         | TOTAL QUANTITY |       | UNIT     |
|---------------------------|------------------------------------------------------------------|----------------|-------|----------|
|                           |                                                                  | PLAN           | FINAL |          |
| ROADWAY ITEMS             |                                                                  |                |       |          |
| S-200-A                   | Mobilization                                                     | Lump Sum       |       | Lump Sum |
| S-201-A                   | Clearing And Grubbing                                            | Lump Sum       |       | Lump Sum |
| S-202-B                   | Removal Of Bridge (Sta. 222+84)                                  | 1.0            |       | Unit     |
| S-202-B                   | Removal Of Bridge (Sta. 268+28)                                  | 1.0            |       | Unit     |
| S-203-A                   | Unclassified Excavation (FM)                                     | 23,095         |       | Cu. Yd.  |
| BASE AND SUSRFACING ITEMS |                                                                  |                |       |          |
| ALTERNATE NO. 1           |                                                                  |                |       |          |
| S-304-A                   | Granular Material (LVM) (Class 4, Group B)                       | 377            |       | Cu. Yd.  |
| S-304-A                   | Granular Material (LVM) (Class 9, Group B)                       | 14,596         |       | Cu. Yd.  |
| S-308-A-1                 | Portland Cement                                                  | 7,096          |       | CWT      |
| S-308-B-1                 | Soil-Cement-Water Mixing (Multiple Pass Mixers)                  | 21,971         |       | Sq. Yd.  |
| S-410-C-1                 | Polymerized-Emulsified Asphalt, Grade CRS-2P                     | 17,171         |       | Gal.     |
| S-410-D                   | Coarse Aggregate Cover Material, Size 6, Type Crushed Stone      | 368            |       | Cu. Yd.  |
| S-410-E                   | Seal Aggregate Cover Material, Size 7, Type Crushed Stone        | 198            |       | Cu. Yd.  |
| S-410-F                   | Blotter Material                                                 | 28             |       | Cu. Yd.  |
| ALTERNATE NO. 2           |                                                                  |                |       |          |
| S-304-A                   | Granular Material (LVM) (Class 4, Group B)                       | 20,144         |       | Cu. Yd.  |
| S-310-D                   | Mixing, Shaping, and Compaction                                  | 21,971         |       | Sq. Yd.  |
| S-408-A                   | Asphalt For Prime Coat (AE-P)                                    | 7,340          |       | Gal.     |
| S-410-C-1                 | Polymerized-Emulsified Asphalt, Grade CRS-2P                     | 17,171         |       | Gal.     |
| S-410-D                   | Coarse Aggregate Cover Material, Size 5, Type Crushed Stone      | 368            |       | Cu. Yd.  |
| S-410-E                   | Seal Aggregate Cover Material, Size 7, Type Crushed Stone        | 198            |       | Cu. Yd.  |
| S-410-F                   | Blotter Material                                                 | 28             |       | Cu. Yd.  |
| ROADWAY ITEMS (continued) |                                                                  |                |       |          |
| S-601-A                   | Class B Structural Concrete                                      | 204.61         |       | Cu. Yd.  |
| S-601-B                   | Class B Structural Concrete, Minor Structures                    | 2.41           |       | Cu. Yd.  |
| S-602-A                   | Reinforcing Steel                                                | 39,184         |       | Lb.      |
| S-603-C-A                 | 15" Reinforced Concrete Pipe, Class III                          | 224            |       | Lin. Ft. |
| S-603-C-A                 | 18" Reinforced Concrete Pipe, Class III                          | 200            |       | Lin. Ft. |
| S-603-C-A                 | 24" Reinforced Concrete Pipe, Class III                          | 272            |       | Lin. Ft. |
| S-603-C-A                 | 48" Reinforced Concrete Pipe, Class III                          | 48             |       | Lin. Ft. |
| S-603-C-B                 | 18" Reinforced Concrete Pipe, End Section                        | 3              |       | Each     |
| S-603-C-B                 | 24" Reinforced Concrete Pipe, End Section                        | 4              |       | Each     |
| S-603-C-B                 | 48" Reinforced Concrete Pipe, End Section                        | 2              |       | Each     |
| S-603-C-D                 | 73" x 45" Reinforced Concrete Arch Pipe, Class III               | 56             |       | Lin. Ft. |
| S-603-C-D                 | 88" x 54" Reinforced Concrete Arch Pipe, Class III               | 56             |       | Lin. Ft. |
| S-603-C-E                 | 73" x 45" Reinforced Concrete Arch Pipe, End Section             | 2              |       | Each     |
| S-603-C-E                 | 88" x 54" Reinforced Concrete Arch Pipe, End Section             | 2              |       | Each     |
| S-606-B                   | Guardrail, W-Beam                                                | 50.0           |       | Lin. Ft. |
| S-606-D                   | Guardrail, Bridge End Section, Type "I" Thrie-Beam               | 4              |       | Each     |
| S-606-E                   | Guardrail, Terminal End Section                                  | 4              |       | Each     |
| S-617-A                   | Right-Of-Way Markers (Type I)                                    | 49             |       | Each     |
| S-618-A                   | Maintenance Of Traffic                                           | Lump Sum       |       | Lump Sum |
| S-618-B                   | Additional Construction Signs                                    | 0.0            |       | Sq. Ft.  |
| S-619-B                   | 4" Wide Traffic Stripe (Skip Yellow)                             | 1,328          |       | Mi.      |
| S-619-C                   | 4" Wide Traffic Stripe (Continuous White)                        | 16,677         |       | Lin. Ft. |
| S-619-D                   | 4" Wide Traffic Stripe (Continuous Yellow)                       | 4,913          |       | Lin. Ft. |
| S-619-F                   | Detail Traffic Stripe                                            | 228.0          |       | Lin. Ft. |
| S-630-A                   | Reflectorized Traffic Warning Sign (Encapsulated Lens)           | 11             |       | Each     |
| S-630-B                   | Reflectorized Traffic Regulatory Sign (Encapsulated Lens)        | 4              |       | Each     |
| S-630-C                   | Reflectorized Traffic Object Marker (Encapsulated Lens) (Type 3) | 4              |       | Each     |
| S-815-A                   | Loose Riprap, 200 lb.                                            | 50             |       | Ton      |

SUMMARY OF QUANTITIES

| PAY ITEM NO.          | PAY ITEM                                       | TOTAL QUANTITY |       | UNIT     |
|-----------------------|------------------------------------------------|----------------|-------|----------|
|                       |                                                | PLAN           | FINAL |          |
| EROSION CONTROL ITEMS |                                                |                |       |          |
| S-212-A               | Agricultural Limestone                         | 20             |       | Ton      |
| S-212-B               | Commercial Fertilizer (13-13-13)               | 10             |       | Ton      |
| S-212-F               | Ammonium Nitrate                               | 1              |       | Ton      |
| S-214-A               | Seeding                                        | 10             |       | Acre     |
| S-215-A               | Vegetative Materials For Mulch                 | 20             |       | Ton      |
| ① S-226-A             | Solid Sodding                                  | 372            |       | Sq. Yd.  |
| S-229-A               | Portland Cement Concrete Paved Ditch           | 16.20          |       | Cu. Yd.  |
| S-233-A               | Temporary Silt Fence                           | 6080           |       | Lin. Ft. |
| BRIDGE ITEMS          |                                                |                |       |          |
| S-803-A               | Test Pile                                      | 2              |       | Each     |
| S-803-B               | Conventional Static Pile Load Test             | 0              |       | Each     |
| S-803-E               | 12" Steel Piling                               | 1,710          |       | Lin. Ft. |
| S-803-F               | 16" Preformed Pile Holes                       | 200            |       | Lin. Ft. |
| S-804-A               | Bridge Concrete, Class "A"                     | 196.89         |       | Cu. Yd.  |
| S-804-C               | 40' Prestressed Concrete Beam, Type I+2        | 198.75         |       | Lin. Ft. |
| S-804-C               | 80' Prestressed Concrete Beam, Type III        | 398.75         |       | Lin. Ft. |
| S-805-A               | Reinforcement                                  | 32,749         |       | Lb.      |
| S-813-A               | Concrete Railing                               | 320            |       | Lin. Ft. |
| S-815-A               | Loose Riprap, 300 lb.                          | 79             |       | Ton      |
| S-815-E               | Geotextile Under Riprap, Type V, AOS 0.21-0.43 | 170            |       | Sq. Yd.  |

① Includes 100 S.Y. Estimated To Be Used As Directed By The Engineer  
Cementitious Material Exposure to Sulfates Is Negligible.

Note: If sulfates are present on the project, add a "bubble" note,    to each concrete pay item showing required cementitious material per 901-S-701.01.



PREPARED BY \_\_\_\_\_ DATE \_\_\_\_\_  
COUNTY ENGINEER

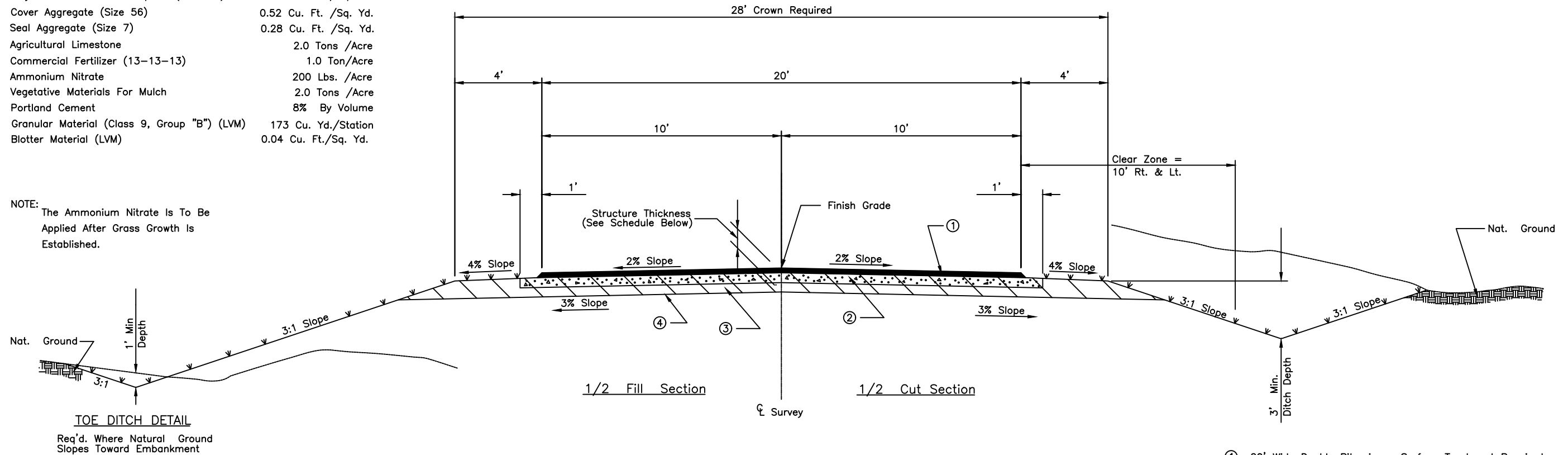
INDEX

| SHEET NO. | TITLE                                                                                                         | SHEET NO.     | TITLE                                                                             |
|-----------|---------------------------------------------------------------------------------------------------------------|---------------|-----------------------------------------------------------------------------------|
| 1         | Title Sheet                                                                                                   | 6401          | Right-Of-Way Markers                                                              |
| 2         | Quantity & Index Sheet                                                                                        | 6403          | Rural Driveways                                                                   |
| 2-A       | Typical Section Sheet, Alt. 1                                                                                 | 6501          | Pipe Culvert Installation                                                         |
| 2-B       | Typical Section Sheet, Alt. 2                                                                                 | 6503          | Concrete Pipe Collar                                                              |
| 2-C       | Schedule Sheet                                                                                                | 6504          | Junction Box For Pipe Culverts                                                    |
| 2-D       | Schedule Sheet                                                                                                | 6507          | Branch Connections                                                                |
| 2-E       | Intersection & Turnout Detail Sheet                                                                           | 6530          | Flared End Section For Concrete Pipe                                              |
| 2-F       | Detail Sheet                                                                                                  | 6531          | Flared End Section For Concrete Arch Pipe                                         |
| 2-G       | Striping Detail & Traffic Sign Sheet                                                                          |               |                                                                                   |
| 2-H       | Traffic Control Plan                                                                                          | 7005          | Box Culvert Drawing Collar Locations                                              |
| I         | Bridge Layout                                                                                                 |               | Normal and Skewed Culverts Group I Diagram                                        |
| II        | Bridge Riprap Detail And Soil Boring Sheet                                                                    | 7014-7016     | Barrel Details - Single Cell                                                      |
| SA-PSM-1  | Pavement Striping & Marking Details                                                                           |               | Height - 8 Ft., Span 8-20 Ft.                                                     |
| SA-SE-2   | Superelevation Transition                                                                                     |               |                                                                                   |
| SA-TSP-1  | Traffic Sign Placement                                                                                        | 7078-7080     | Wings With 3:1 Slope For Basic Culvert Drawing, Single Cell, 30 Deg. Skew Details |
| 6101      | Typical Temporary Erosion Control/Sediment Control Applications                                               |               | Heights - 8 Ft, Spans 8-20 Ft                                                     |
| 6105      | Typical Temporary Erosion, Sediment, And Water Pollution Control Measures(Silt Fence & Hay Bale Ditch Checks) |               |                                                                                   |
| 6201      | Guard Rail: "W" Beam (Wood Posts)                                                                             | E-28-40(1)-09 | 40' Prestressed Concrete Span Details                                             |
| 6202      | Guard Rail: Thrie Beam (Wood Posts)                                                                           | E-28-40-PS-09 | 40' Prestressed Concrete Beam Details                                             |
| 6203      | Guard Rail: "W" Beam (Steel Posts)                                                                            | E-28-80(1)-09 | 80' Prestressed Concrete Span Details                                             |
| 6210      | Guard Rail: Bridge End Section Type "I" (Wood Posts)                                                          | E-28-80-PS-09 | 80' Prestressed Concrete Beam Details                                             |
| 6211      | Guard Rail: Bridge End Section Type "I" (Steel Posts)                                                         | E-28-40(2)-09 | End Bent - 40' Prestressed Conc. Beam Span                                        |
| 6215      | Guard Rail: Typical Installation At Bridge Approaches For 2-Lane, 2-Way Highway                               | E-28-80(4)-09 | Dbl. Pile Bent - 40,60, & 80 Ft. Prestressed Beam Spans                           |
| 6358      | Highway Sign And Barricade Details For Construction Projects                                                  | R-99          | Railing Details                                                                   |
|           |                                                                                                               | 3-6           | Plan/Profile Sheets                                                               |
|           |                                                                                                               | 4-A           | Relocated County Road Plan/Profile                                                |

**RATES OF APPLICATION USED FOR ESTIMATING QUANTITIES**

| ITEM                                         | RATE                  |
|----------------------------------------------|-----------------------|
| Polymerized-Emulsified Asphalt (CRS-2P)      | 0.90 Gal. /Sq. Yd.    |
| Cover Aggregate (Size 56)                    | 0.52 Cu. Ft. /Sq. Yd. |
| Seal Aggregate (Size 7)                      | 0.28 Cu. Ft. /Sq. Yd. |
| Agricultural Limestone                       | 2.0 Tons /Acre        |
| Commercial Fertilizer (13-13-13)             | 1.0 Ton/Acre          |
| Ammonium Nitrate                             | 200 Lbs. /Acre        |
| Vegetative Materials For Mulch               | 2.0 Tons /Acre        |
| Portland Cement                              | 8% By Volume          |
| Granular Material (Class 9, Group "B") (LVM) | 173 Cu. Yd./Station   |
| Blotter Material (LVM)                       | 0.04 Cu. Ft./Sq. Yd.  |

NOTE: The Ammonium Nitrate Is To Be Applied After Grass Growth Is Established.



**FLEXIBLE PAVEMENT DESIGN**

| DATA FOR PAVEMENT DETERMINATION |         |
|---------------------------------|---------|
| (2022) ADT = 110                | Current |
| (2027) ADT = 117                | n Year  |
| (2042) ADT = 143                | Design  |
| DHV = 21                        |         |
| D = 50 % of DHV                 |         |
| T = 10 % of DHV                 |         |
| T (Total) = 10 % of ADT         |         |
| 18k (Flex) = 675/1000           |         |
| 18k (Rigid) = 0/1000            |         |
| CBR = 11                        |         |

| REQUIRED STRUCTURE NUMBER |       |      |       |
|---------------------------|-------|------|-------|
| 2042                      |       | 2022 |       |
| ADL                       | 4     | ADL  | 4     |
| CBR                       | 11    | CBR  | 11    |
| SSV                       | 4.85  | SSV  | 4.85  |
| PT                        | 2.5   | PT   | 2.5   |
| SN                        | 1.916 | SN   | 1.472 |

**TYPICAL GRADE, DRAIN, BASE & SURFACING SECTION**

ALTERNATE No. 1. CEMENT TREATED GRANULAR BASE  
 Sta. 208+33 To Sta. 286+59, Mainline  
 Sta. 10+00.00 To Sta. 15+32.75, Relocated County Road  
 N.T.S.

- ① 20' Wide Double Bituminous Surface Treatment Required
- ② Soil-Cement-Water Mixing Req'd. (22' Wide) Portland Cement Shall Be Incorporated Into The Top 6" Of Granular Material (Class 9, Group B). Cement Percentage (8% By Volume Estimated), Proper Moisture Content And Approximate Density To Be Determined By A State Aid Approved Laboratory From Soil Analysis Taken From Granular Material Placed On Roadway.
- ③ Granular Material (Class 9, Group B) Required
- ④ Subgrade

**GENERAL NOTES**

Erosion and sediment control measures are to be applied on disturbed areas indicated ( www ) or as required by the Storm Water Pollution Prevention Plan.

Clearing and grubbing of construction easements shall be considered as normal right-of-way and paid for by lump sum.

Before final acceptance, the entire right-of-way shall be mowed by the contractor at no cost to the project.

**SCHEDULE OF STRUCTURE THICKNESS**

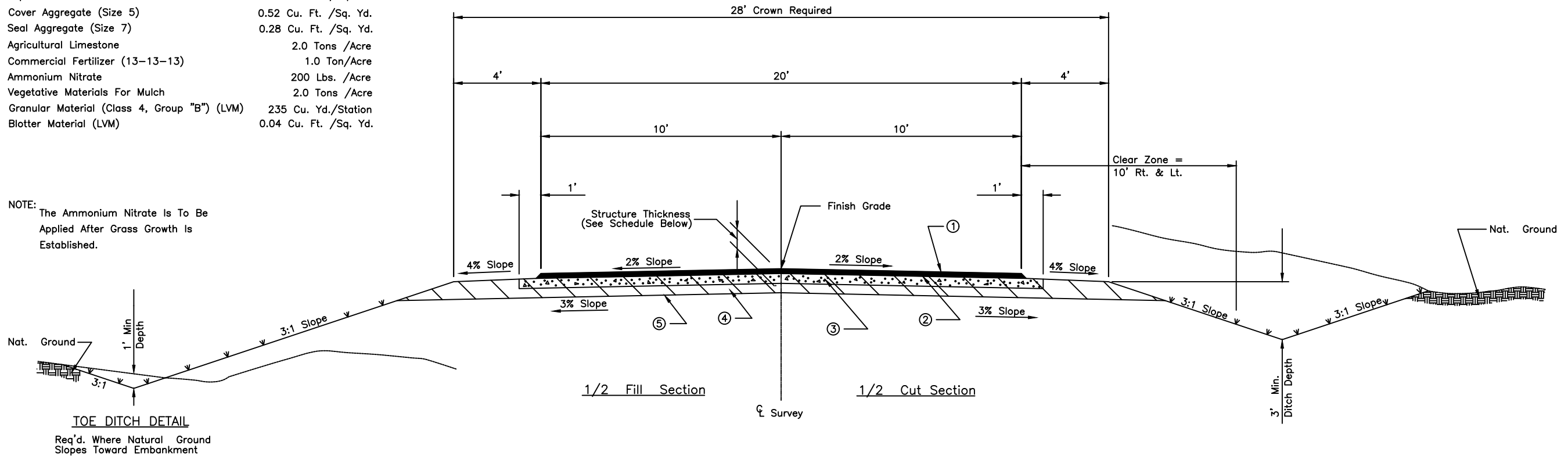
| STATION TO STATION                                         | ESTIMATED SUBGRADE CBR | SOIL SUPPORT VALUE | AVERAGE DAILY LANE LOADING | STRUCTURE NUMBER REQUIRED | SUBBASE THICKNESS |      | BASE COURSE THICKNESS |      | SURFACE COURSE THICKNESS |    | TOTAL PROVIDED |      |
|------------------------------------------------------------|------------------------|--------------------|----------------------------|---------------------------|-------------------|------|-----------------------|------|--------------------------|----|----------------|------|
|                                                            |                        |                    |                            |                           | in                | SN   | in                    | SN   | in                       | SN | in             | SN   |
| 208+33 - 286+59 & 10+00 - 15+32.75 (Relocated County Road) | 11                     | 4.85               | 4                          | 1.47                      | 6.0               | 0.54 | 6.0                   | 1.02 | 0                        | 0  | 12.0           | 1.56 |
|                                                            |                        |                    |                            |                           |                   |      |                       |      |                          |    |                |      |
|                                                            |                        |                    |                            |                           |                   |      |                       |      |                          |    |                |      |

NOTE: SUBGRADE CBR IS ESTIMATED ONLY. A SUBGRADE SOIL PROFILE WILL BE PREPARED AND THE CBR AND THE REQUIRED BASE STRUCTURE THICKNESS DETERMINED AFTER GRADING AND BEFORE PLACING BASE MATERIAL.

**RATES OF APPLICATION USED FOR ESTIMATING QUANTITIES**

| ITEM                                         | RATE                  |
|----------------------------------------------|-----------------------|
| Polymerized-Emulsified Asphalt (CRS-2P)      | 0.90 Gal. /Sq. Yd.    |
| Asphalt For Prime Coat                       | 0.35 Gal. /Sq. Yd.    |
| Cover Aggregate (Size 5)                     | 0.52 Cu. Ft. /Sq. Yd. |
| Seal Aggregate (Size 7)                      | 0.28 Cu. Ft. /Sq. Yd. |
| Agricultural Limestone                       | 2.0 Tons /Acre        |
| Commercial Fertilizer (13-13-13)             | 1.0 Ton/Acre          |
| Ammonium Nitrate                             | 200 Lbs. /Acre        |
| Vegetative Materials For Mulch               | 2.0 Tons /Acre        |
| Granular Material (Class 4, Group "B") (LVM) | 235 Cu. Yd./Station   |
| Blotter Material (LVM)                       | 0.04 Cu. Ft. /Sq. Yd. |

NOTE: The Ammonium Nitrate Is To Be Applied After Grass Growth Is Established.



**FLEXIBLE PAVEMENT DESIGN**

| DATA FOR PAVEMENT DETERMINATION |
|---------------------------------|
| (2022) ADT = 110 Current        |
| (2027) ADT = 117 n Year         |
| (2042) ADT = 143 Design         |
| DHV = 21                        |
| D = 50 % of DHV                 |
| T = 10 % of DHV                 |
| T (Total) = 10 % of ADT         |
| 18k (Flex) = 675/1000           |
| 18k (Rigid) = 0/1000            |
| CBR = 11                        |

| REQUIRED STRUCTURE NUMBER |          |
|---------------------------|----------|
| 2042                      | 2022     |
| ADL 4                     | ADL 4    |
| CBR 11                    | CBR 11   |
| SSV 4.85                  | SSV 4.85 |
| PT 2.5                    | PT 2.5   |
| SN 1.916                  | SN 1.472 |

**TYPICAL GRADE, DRAIN, BASE & SURFACING SECTION**

ALTERNATE No. 2. MIXED, SHAPED, AND COMPACTED GRANULAR BASE  
 Sta. 208+33 To Sta. 286+59, Mainline  
 Sta. 10+00.00 To Sta. 15+32.75, Relocated County Road  
 N.T.S.

- ① 20' Wide Double Bituminous Surface Treatment Required
- ② Prime Coat Required (22' Wide)
- ③ Mixing, Shaping, & Compaction Req'd. (22' Wide) 6 in. Deep.
- ④ Granular Material (Class 4, Group B) Required
- ⑤ Subgrade

**GENERAL NOTES**

Erosion and sediment control measures are to be applied on disturbed areas indicated ( ~~XXX~~ ) or as required by the Storm Water Pollution Prevention Plan.

Clearing and grubbing of construction easements shall be considered as normal right-of-way and paid for by lump sum.

Before final acceptance, the entire right-of-way shall be mowed by the contractor at no cost to the project.

**SCHEDULE OF STRUCTURE THICKNESS**

| STATION TO STATION                                         | ESTIMATED SUBGRADE CBR | SOIL SUPPORT VALUE | AVERAGE DAILY LANE LOADING | STRUCTURE NUMBER REQUIRED | SUBBASE THICKNESS |      | BASE COURSE THICKNESS |      | SURFACE COURSE THICKNESS |    | TOTAL PROVIDED |      |
|------------------------------------------------------------|------------------------|--------------------|----------------------------|---------------------------|-------------------|------|-----------------------|------|--------------------------|----|----------------|------|
|                                                            |                        |                    |                            |                           | in                | SN   | in                    | SN   | in                       | SN | in             | SN   |
| 208+33 - 286+59 & 10+00 - 15+32.75 (Relocated County Road) | 11                     | 4.85               | 4                          | 1.47                      | 9.0               | 0.99 | 6.0                   | 0.60 | 0                        | 0  | 15.0           | 1.59 |
|                                                            |                        |                    |                            |                           |                   |      |                       |      |                          |    |                |      |
|                                                            |                        |                    |                            |                           |                   |      |                       |      |                          |    |                |      |

NOTE: SUBGRADE CBR IS ESTIMATED ONLY. A SUBGRADE SOIL PROFILE WILL BE PREPARED AND THE CBR AND THE REQUIRED BASE STRUCTURE THICKNESS DETERMINED AFTER GRADING AND BEFORE PLACING BASE MATERIAL.

BOX CULVERT SCHEDULE

| Sheet No. | Station | Size     | State Standards        | Length | Class "B" Conc. | Reinf. | "T1" | "T2" | "V"  | "Z" | Remarks       |
|-----------|---------|----------|------------------------|--------|-----------------|--------|------|------|------|-----|---------------|
| 4         | 223+09  | 16' X 8' | 7005, 7014, 7015, 7016 | 65     | 204.61          | 39,184 | 13   | 16.5 | 11.5 | 22  | 30' Lt. Fwd.  |
|           |         |          | 7078, 7079, 7080       |        |                 |        |      |      |      |     | 10' MAX COVER |
| Total     |         |          |                        |        | 204.61          | 39,184 |      |      |      |     |               |
| Units     |         |          |                        | Ft     | Cu Yd           | Lb     | In   | In   | In   | Ft  |               |

CONC. PAVED DITCH SCHEDULE

| Sheet No. | Station - Station | Side | Width | Length | Toe Wall    | Total       |
|-----------|-------------------|------|-------|--------|-------------|-------------|
| 5         | 257+00 - 357+00   | LT.  | 6.0   | 100.0  | 0.30        | 8.11        |
| 5         | 257+00 - 357+00   | RT.  | 6.0   | 100.0  | 0.30        | 8.11        |
| TOTALS    |                   |      |       |        |             | 16.22       |
| UNITS     |                   |      | feet  | feet   | cubic yards | cubic yards |

CULVERT HYDRAULIC DESIGN SUMMARY

| SH. NO. | STATION | D. A.<br>Acres | CULVERT SIZE | UPSTREAM FLOWLINE ELEVATION (feet) | DESIGN STORM (Q25)<br>(25-YEAR STORM) |                            |            | BASE STORM (Q100)<br>(100-YEAR STORM) |                            |      | STORM OF RECORD |                  |                      | REMARKS                               |            |                                        |
|---------|---------|----------------|--------------|------------------------------------|---------------------------------------|----------------------------|------------|---------------------------------------|----------------------------|------|-----------------|------------------|----------------------|---------------------------------------|------------|----------------------------------------|
|         |         |                |              |                                    | DISCHARGE<br>cfs                      | * HEADWATER CONTROL IN/OUT |            | DISCHARGE<br>cfs                      | * HEADWATER CONTROL IN/OUT |      | DATE OCCURRED   | DISCHARGE<br>cfs | HIGH WATER ELEVATION |                                       |            |                                        |
|         |         |                |              |                                    |                                       | HW/D                       | HW (DEPTH) |                                       | HW (ELEV.)                 | HW/D |                 |                  |                      |                                       | HW (DEPTH) | HW (ELEV.)                             |
| 3       | 208+62  | 6              | 18"          | 335.05                             | 20                                    | 1.55                       | 3.10       | 338.15                                | 26                         | 1.90 | 3.80            | 338.85           | Not Available        | C= <u>0.37</u> I = <u>9.0</u> in./hr. |            |                                        |
| 4       | 212+50  | 252            | 88" X 54"    | 326.00                             | 298                                   | 1.43                       | 6.44       | 332.44                                | 381                        | 2.00 | 9.00            | 335.00           | 1972                 | 450                                   | 338.00     | S= <u>6.29</u> Ft/Mi L= <u>1.89</u> Mi |
| 4       | 223+09  | 1336           | 16' X 8'     | 322.00                             | 1020                                  | 0.95                       | 7.60       | 333.60                                | 1313                       | 1.30 | 10.40           | 336.40           | 1927                 | 1313                                  | 336.40     | S= <u>4.27</u> Ft/Mi L= <u>3.16</u> Mi |
| 4-A     | 238+00  | 7              | 24"          | 341.20                             | 24                                    | 1.60                       | 3.20       | 344.40                                | 29                         | 2.10 | 4.20            | 345.40           | Not Available        |                                       |            | C= <u>0.37</u> I = <u>9.0</u> in./hr.  |
| 5       | 256+97  | 78             | 73" X 45"    | 333.70                             | 175                                   | 1.49                       | 5.59       | 339.29                                | 220                        | 2.25 | 8.44            | 342.14           | 1962                 | 275                                   | 345.25     | S= <u>4.40</u> Ft/Mi L= <u>0.85</u> Mi |
| 6       | 281+29  | 23             | 48"          | 330.00                             | 125                                   | 1.65                       | 6.60       | 336.60                                | 155                        | 1.85 | 7.40            | 337.40           | Not Available        |                                       |            | S= <u>5.00</u> Ft/Mi L= <u>0.43</u> Mi |

\* Headwater Elevation Values Shown Are Theoretical And May Vary From Actual Conditions.

Note: If slope and length data is generated via StreamStats

PIPE SCHEDULE

| STATION | CONC. PIPE, CLASS III |       |       |      | CONC. F.E.S. REQ'D. |      |      | CONC. ARCH PIPE, CLASS III |           | CONC. ARCH PIPE F.E.S REQ'D. |           | CLASS "B" CONC., MINOR STRUCT. | REMARKS                                                          |
|---------|-----------------------|-------|-------|------|---------------------|------|------|----------------------------|-----------|------------------------------|-----------|--------------------------------|------------------------------------------------------------------|
|         | 15"                   | 18"   | 24"   | 48"  | 18"                 | 24"  | 48"  | 73" X 45"                  | 88" X 54" | 73" X 45"                    | 88" X 54" |                                |                                                                  |
| 208+62  |                       | 32    |       |      | 1.0                 |      |      |                            |           |                              |           | 0.063                          | EXTEND EXIST. R.C.P. RT., TOE WALL REQ'D.                        |
| 211+30  | 32                    |       |       |      |                     |      |      |                            |           |                              |           |                                | SIDEDRAIN RT.                                                    |
| 212+50  |                       |       |       |      |                     |      |      | 56                         |           |                              | 2.0       | 0.207                          | CROSS DRAIN, TOE WALL REQ'D.                                     |
| 214+50  | 32                    |       |       |      |                     |      |      |                            |           |                              |           |                                | SIDEDRAIN RT.                                                    |
| 220+80  |                       |       | 32    |      |                     |      |      |                            |           |                              |           |                                | SIDEDRAIN RT.                                                    |
| 221+60  | 32                    |       |       |      |                     |      |      |                            |           |                              |           |                                | SIDEDRAIN LT.                                                    |
| 222+75  |                       |       | 56    |      | 1.0                 |      |      |                            |           |                              |           | 0.493                          | TIE INTO WING LT, PIPE COLLAR, BRANCH CONN., AND TOE WALL REQ'D. |
| 223+07  |                       |       | 8     |      |                     |      |      |                            |           |                              |           |                                | TIE INTO JB - 1 RT., BRANCH CONNECTION REQ'D.                    |
| 223+43  |                       |       | 56    |      | 1.0                 |      |      |                            |           |                              |           | 0.083                          | TIE INTO JB - 1 RT., TOE WALL REQ'D.                             |
| 224+40  |                       |       | 32    |      |                     |      |      |                            |           |                              |           |                                | SIDEDRAIN LT.                                                    |
| 228+88  |                       |       | 32    |      |                     |      |      |                            |           |                              |           |                                | SIDEDRAIN RT.                                                    |
| 232+90  |                       | 32    |       |      |                     |      |      |                            |           |                              |           |                                | SIDEDRAIN RT.                                                    |
| 233+35  |                       | 32    |       |      |                     |      |      |                            |           |                              |           |                                | SIDEDRAIN RT.                                                    |
| 238+00  |                       |       | 56    |      | 2.0                 |      |      |                            |           |                              |           | 0.083                          | CROSS DRAIN, TOE WALL REQ'D.                                     |
| 244+70  | 32                    |       |       |      |                     |      |      |                            |           |                              |           |                                | SIDEDRAIN LT.                                                    |
| 250+65  |                       | 32    |       |      |                     |      |      |                            |           |                              |           |                                | SIDEDRAIN LT.                                                    |
| 256+97  |                       |       |       |      |                     |      | 56   |                            | 2.0       |                              |           | 0.167                          | CROSS DRAIN, TOE WALL REQ'D.                                     |
| 260+10  | 32                    |       |       |      |                     |      |      |                            |           |                              |           |                                | SIDEDRAIN RT.                                                    |
| 272+40  |                       | 32    |       |      |                     |      |      |                            |           |                              |           |                                | SIDEDRAIN RT.                                                    |
| 273+23  |                       | 40    |       |      | 2.0                 |      |      |                            |           |                              |           | 0.063                          | SIDEDRAIN RT.                                                    |
| 279+08  | 32                    |       |       |      |                     |      |      |                            |           |                              |           |                                | SIDEDRAIN RT.                                                    |
| 281+29  |                       |       | 48    |      |                     | 2.0  |      |                            |           |                              |           | 0.145                          | CROSS DRAIN, TOE WALL REQ'D.                                     |
| 284+85  | 32                    |       |       |      |                     |      |      |                            |           |                              |           |                                | SIDEDRAIN RT.                                                    |
| TOTALS  | 224.0                 | 200.0 | 272.0 | 48.0 | 3.0                 | 4.0  | 2.0  | 56.0                       | 56.0      | 2.0                          | 2.0       | 1.304                          |                                                                  |
| UNITS   | feet                  | feet  | feet  | feet | each                | each | each | feet                       | feet      | each                         | each      | cubic yards                    |                                                                  |

**PORTLAND CEMENT EXPOSURE TO SOLUBLE SULFATES IS NEGLIGIBLE.**

MODIFY THIS NOTE AS REQUIRED BY CONDITIONS FOR SEAWATER, MODERATE, OR SEVERE SULFATES PER 901-S-701.01.

Note: Submit Sulfate Test Report(s) with PS&E plans

IF YOU DO NOT DESIRE TOE WALLS AS PER STD. NO. 6530 AND 6531, DELETE THE COLUMN FOR CONC., MINOR STRUCTURES AND ADD A NOTE UNDER THE PIPE SCHEDULE STATING THAT TOE WALLS ARE NOT REQUIRED.

| RAMP SCHEDULE |         |      |              |                  |                                      |                                      |
|---------------|---------|------|--------------|------------------|--------------------------------------|--------------------------------------|
| Sheet No.     | Station | Side | Width (feet) | Paved Apron Area | Alt. No. 1 Gran. Mat'l. (Cl.4, Gp.B) | Alt. No. 2 Gran. Mat'l. (Cl.4, Gp.B) |
| 3             | 209+15  | LT.  | 50.00        | 25.30            | 54                                   | 63                                   |
| 4             | 211+30  | RT.  | 20.0         | 11.97            | 17                                   | 20                                   |
| 4             | 214+50  | RT.  | 20.0         | 11.97            | 17                                   | 20                                   |
| 4             | 220+80  | RT.  | 20.0         | 11.97            | 17                                   | 20                                   |
| 4             | 221+60  | LT.  | 20.0         | 11.97            | 17                                   | 20                                   |
| 4             | 223+43  | RT.  | 20.0         | 11.97            | 17                                   | 20                                   |
| 4             | 224+40  | LT.  | 20.0         | 11.97            | 17                                   | 20                                   |
| 4             | 228+88  | RT.  | 20.0         | 11.97            | 17                                   | 20                                   |
| 4             | 232+90  | RT.  | 20.0         | 11.97            | 17                                   | 20                                   |
| 4             | 233+35  | RT.  | 20.0         | 11.97            | 17                                   | 20                                   |
| 5             | 244+70  | LT.  | 20.0         | 11.97            | 17                                   | 20                                   |
| 5             | 250+65  | LT.  | 20.0         | 11.97            | 17                                   | 20                                   |
| 5             | 260+10  | RT.  | 20.0         | 11.97            | 17                                   | 20                                   |
| 5             | 261+60  | LT.  | 20.0         | 11.97            | 17                                   | 20                                   |
| 6             | 272+40  | RT.  | 20.0         | 11.97            | 17                                   | 20                                   |
| 6             | 276+50  | LT.  | 20.0         | 11.97            | 17                                   | 20                                   |
| 6             | 277+80  | RT.  | 20.0         | 11.97            | 17                                   | 20                                   |
| 6             | 279+08  | RT.  | 20.0         | 11.97            | 17                                   | 20                                   |
| 6             | 284+85  | RT.  | 20.0         | 11.97            | 17                                   | 20                                   |
| 6             | 286+13  | RT.  | 20.0         | 11.97            | 17                                   | 20                                   |
| TOTALS        |         |      |              | 252.73           | 377                                  | 443                                  |
| UNITS         |         |      |              | square yards     | cubic yards                          | cubic yards                          |

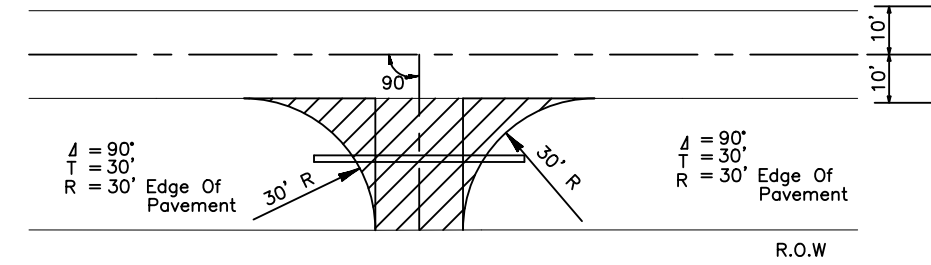
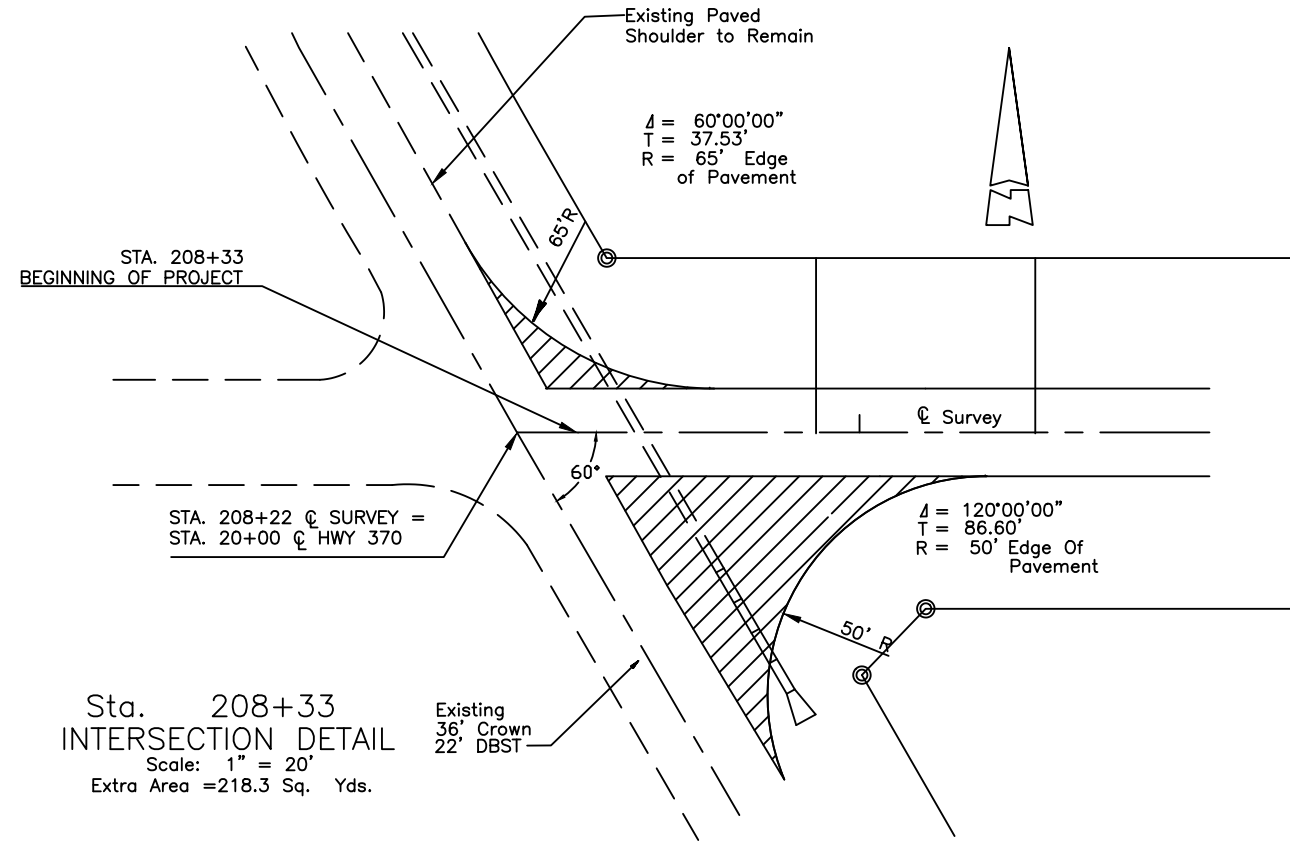
| SOLID SOD SCHEDULE |                   |      |       |        |              |  |
|--------------------|-------------------|------|-------|--------|--------------|--|
| Sheet No.          | Station - Station | Side | Width | Length | Area         |  |
| 4                  | 211+90 - 212+40   | LT.  | 6.0   | 50.00  | 33.33        |  |
| 4                  | 211+90 - 212+40   | RT.  | 6.0   | 50.00  | 33.33        |  |
| 4                  | 212+60 - 213+10   | LT.  | 6.0   | 50.00  | 33.33        |  |
| 4                  | 212+60 - 213+10   | RT.  | 6.0   | 50.00  | 33.33        |  |
| 5                  | 257+00 - 357+00   | LT.  | 2.0   | 100.00 | 44.44        |  |
| 5                  | 257+00 - 357+00   | RT.  | 2.0   | 100.00 | 44.44        |  |
| 6                  | 270+00 - 270+74   | RT.  | 6.0   | 74.00  | 49.36        |  |
| TOTALS             |                   |      |       |        | 271.56       |  |
| UNITS              |                   |      | feet  | feet   | square yards |  |

| ESTIMATED GRANULAR MATERIAL REQ'D. |                                                        |                                                        |
|------------------------------------|--------------------------------------------------------|--------------------------------------------------------|
| Area                               | Alternate No. 1 Granular Material (Cl. 9, Gp. B) (LVM) | Alternate No. 2 Granular Material (Cl. 4, Gp. B) (LVM) |
| Roadway                            | 13,262.2                                               | 18,015.10                                              |
| Intersections and Turnouts         | 261.3                                                  | 326.6                                                  |
| Ramps                              | See Ramp Schedule                                      | 443                                                    |
| Bridge Approaches                  | 306.6                                                  | 383.46                                                 |
| Extra Area In Curves               | 61.4                                                   | 76.84                                                  |
| Relocated County Road              | 704.1                                                  | 899.46                                                 |
| Project Total                      | 14,595.6                                               | 20,144.46                                              |
| Units                              | cubic yards                                            | cubic yards                                            |

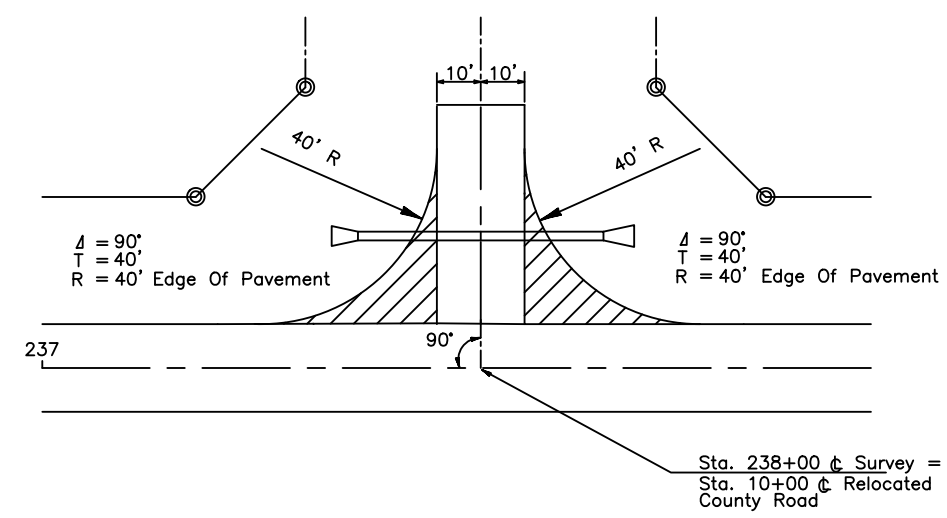
| TEMPORARY SILT FENCE SCHEDULE |                   |           |        |
|-------------------------------|-------------------|-----------|--------|
| Sheet No.                     | Station - Station | Side      | Length |
| 4                             | 210+00 - 215+00   | RT. & LT. | 1000   |
| 4                             | 221+00 - 229+00   | RT. & LT. | 1600   |
| 5                             | 254+00 - 258+00   | RT. & LT. | 800    |
| 5                             | 267+00 - 268+40   | RT. & LT. | 280    |
| 5-6                           | 269+00 - 274+00   | RT. & LT. | 1000   |
| 6                             | 279+00 - 286+00   | RT. & LT. | 1400   |
| TOTALS                        |                   |           | 6080   |
| UNITS                         |                   | feet      |        |

| JUNCTION BOX SCHEDULE |         |          |         |         |         |         |           |           |              |               |             |          |        |        |        |        |        |        |        |        |
|-----------------------|---------|----------|---------|---------|---------|---------|-----------|-----------|--------------|---------------|-------------|----------|--------|--------|--------|--------|--------|--------|--------|--------|
| Sheet No.             | Station | J.B. No. | Side 1  | Side 2  | Side 3  | Side 4  | Side W1-3 | Side W2-4 | Inlet Height | Cl. "B" Conc. | Rein. Steel | Bar List |        |        |        |        |        |        |        |        |
|                       |         |          | SZ./SK. | SZ./SK. | SZ./SK. | SZ./SK. |           |           |              |               |             | A1       | A2     | A3     | A4     | B      | C      | D      | E      | F      |
| 4                     | 223+12  | JB-1     | 24/0    | 0/0     | 24/45   | 0/0     | 5.29      | 2.50      | 3.50         | 1.10          | 78.83       | 2@37     | 0      | 2@37   | 0      | 2@57   | 2@24   | 4@36   | 16@26  | 8@59   |
| TOTAL                 |         |          |         |         |         |         |           |           |              |               | 1.10        | 78.83    |        |        |        |        |        |        |        |        |
| UNITS                 |         |          | in      | in      | in      | in      | feet      | feet      | feet         | cubic yards   | lb          | inches   | inches | inches | inches | inches | inches | inches | inches | inches |

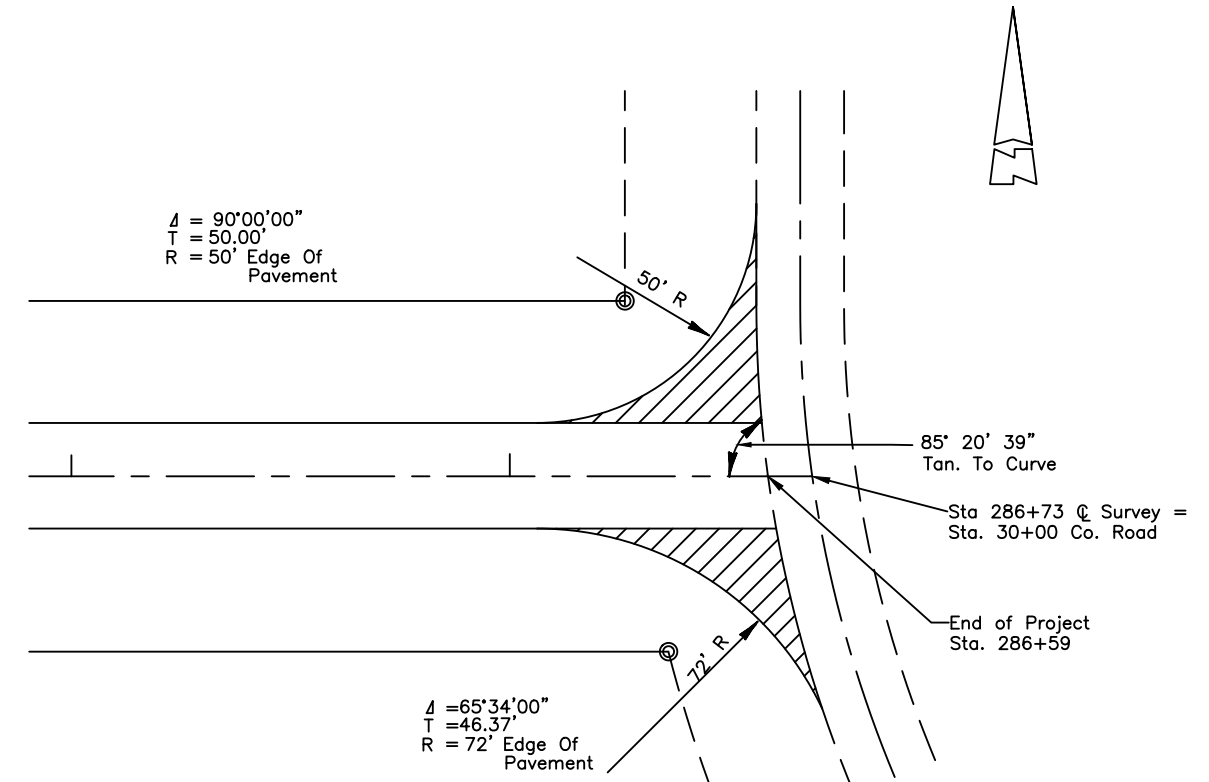
| BASE AND SURFACING SCHEDULE |                          |                 |                           |            |                |                         |                         |                        |                           |                        |                        |                  |
|-----------------------------|--------------------------|-----------------|---------------------------|------------|----------------|-------------------------|-------------------------|------------------------|---------------------------|------------------------|------------------------|------------------|
| Area                        | BASE                     |                 |                           |            | Surfacing Area | SURFACING               |                         |                        |                           |                        |                        |                  |
|                             | Alternate No. 1          |                 | Alternate No. 2           |            |                | Alternate No. 1         |                         |                        | Alternate No. 2           |                        |                        | Blotter Material |
|                             | Soil-Cement Water Mixing | Portland Cement | Mixing-Shaping Compaction | Prime Coat |                | Asphalt Cement (CRS-2P) | Cover Aggregate Size 56 | Cover Aggregate Size 7 | Asphalt Cement (CRS - 2P) | Cover Aggregate Size 5 | Cover Aggregate Size 7 |                  |
| Roadway                     | 18,739.11                | 6341.32         | 18,739.11                 | 6,558.69   | 17,035.56      | 15,332.0                | 328.09                  | 176.66                 | 15,332.0                  | 328.09                 | 176.66                 | 25.24            |
| Intersections and Turnouts  | 522.60                   | 176.85          | 522.60                    | 182.93     | 522.60         | 417.2                   | 9.75                    | 5.25                   | 417.2                     | 9.75                   | 525                    | 0.75             |
| Ramps (20)                  | 252.73                   | 85.52           | 252.73                    | 88.46      | 252.73         | 227.5                   | 4.87                    | 2.62                   | 227.5                     | 4.87                   | 2.62                   | 0.37             |
| Bridge Approaches           | 31.00                    | 10.48           | 31.00                     | 10.85      | 31.00          | 27.9                    | 0.60                    | 0.32                   | 27.9                      | 0.60                   | 0.32                   | 0.04             |
| Extra Area In Curves        | 122.93                   | 41.59           | 122.93                    | 43.03      | 122.93         | 110.6                   | 2.37                    | 1.28                   | 110.6                     | 2.37                   | 1.28                   | 0.18             |
| Relocated County Road       | 1,302.28                 | 440.69          | 1,302.28                  | 455.80     | 1183.89        | 1065.5                  | 22.80                   | 12.28                  | 1065.5                    | 22.80                  | 12.28                  | 1.75             |
| Project Total               | 21,970.65                | 7,096.45        | 21,970.65                 | 7,339.76   | 19,148.71      | 17,170.70               | 368.48                  | 198.41                 | 17,170.7                  | 368.48                 | 198.41                 | 28.33            |
| Units                       | square yards             | cwt             | square yards              | gallons    | square yards   | gallons                 | cubic yards             | cubic yards            | gallons                   | cubic yards            | cubic yards            | cubic yards      |



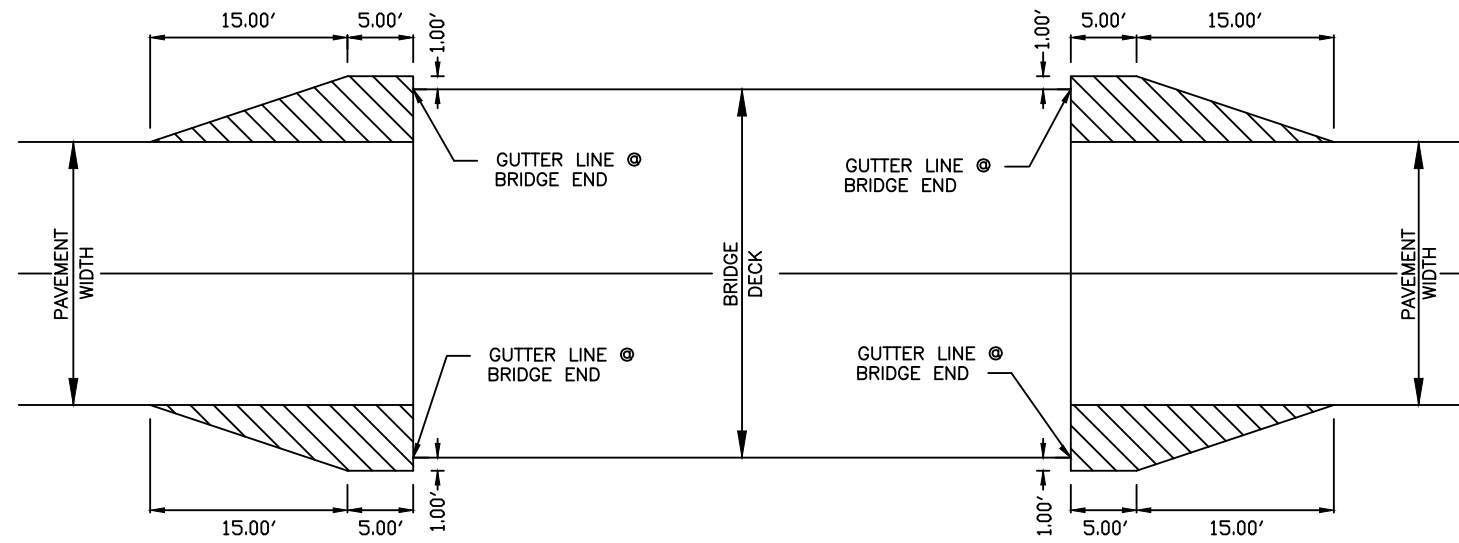
Sta. 273+23 Rt.  
 TURNOUT DETAIL  
 Scale: 1" = 20'  
 Extra Area = 109.6 Sq. Yds.



Sta. 238+00 Lt.  
 TURNOUT DETAIL  
 FOR RELOCATED CO. ROAD  
 Scale: 1" = 20'  
 Extra Area = 76.3 Sq. Yds.

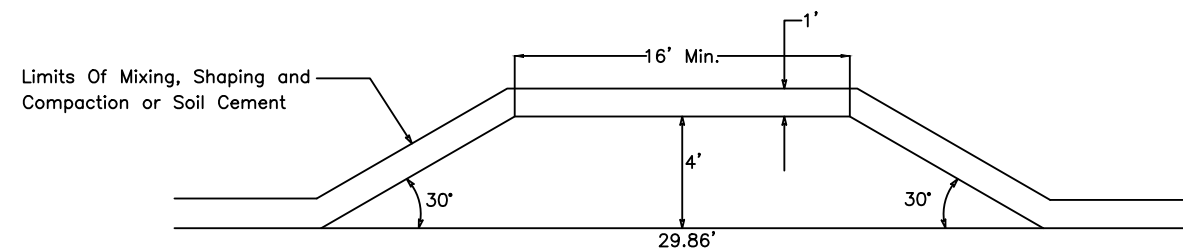
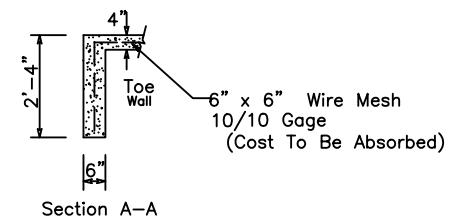
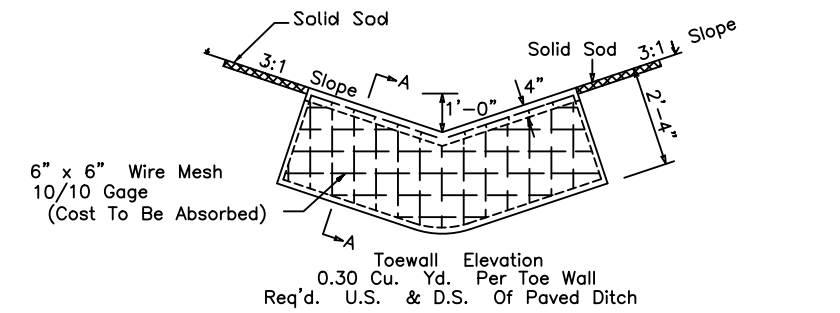
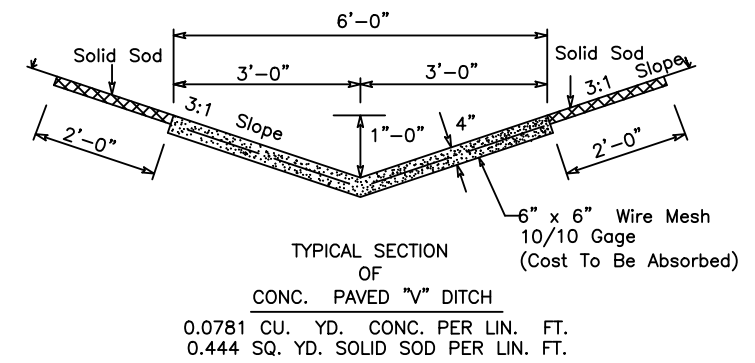


Sta. 286+59  
 INTERSECTION DETAIL  
 Scale: 1" = 20'  
 Extra Area = 118.4 Sq. Yds.



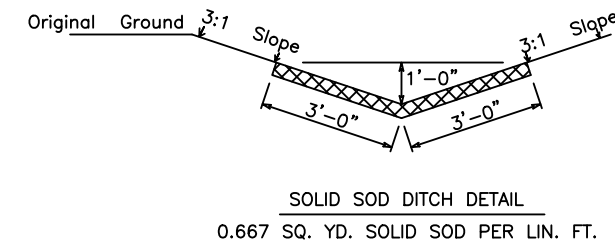
PAVING TREATMENT AT BRIDGE ENDS

Extra Area 31 sq. yd.



TYPICAL PAVED APRON DETAIL

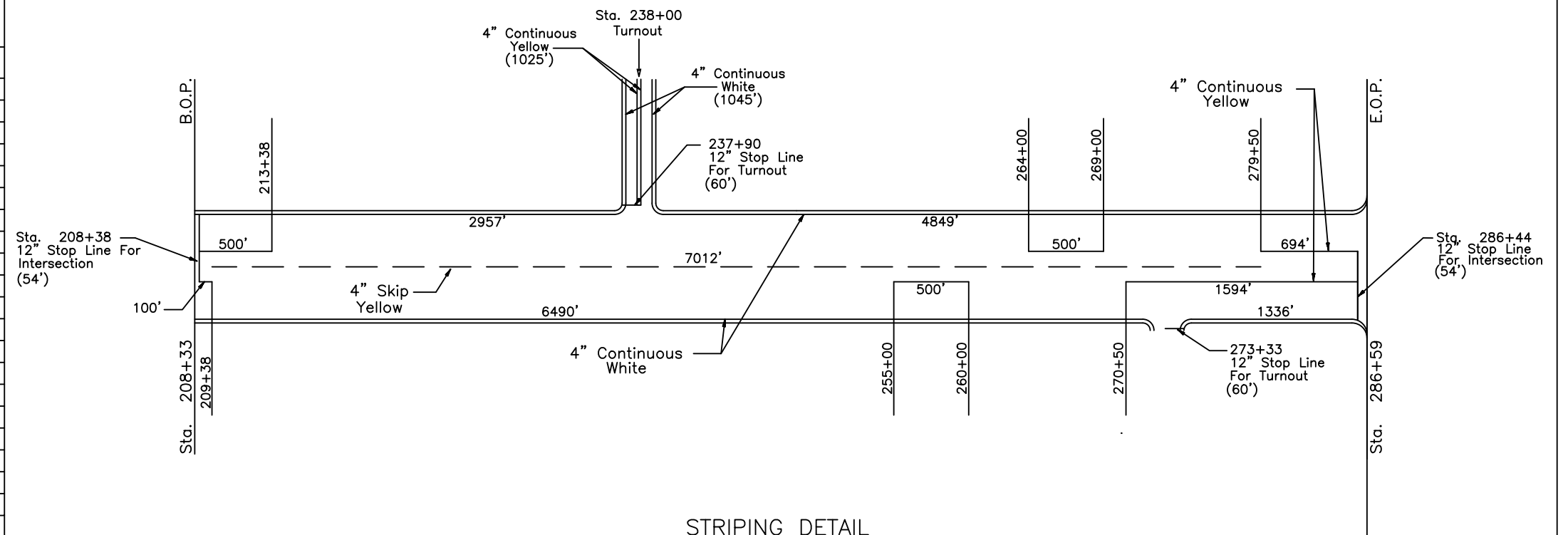
10.2 SQ. YD. EXTRA AREA PER 16' RAMP  
 11.97 SQ. YD. EXTRA AREA PER 20' RAMP





TRAFFIC SIGNS REQ'D

| Station     | Type                    | Remarks                              | Side     |
|-------------|-------------------------|--------------------------------------|----------|
| 208+53      | R1-1                    | Stop Sign                            | Lt.      |
| 213+28      | W3-1                    | Stop Ahead Sign                      | Lt.      |
| 235+00      | W2-2                    | Side Road Lt.                        | Rt.      |
| 237+80      | R1-1                    | Stop Sign                            | Lt.      |
| 15+00       | W3-1                    | Stop Ahead Sign (Relocated Co. Road) | Lt.      |
| 238+00      | W1-7                    | Large Arrow (two directions)         | Rt.      |
| 241+00      | W2-2                    | Side Road Rt.                        | Lt.      |
| 267+89      | OM-3L                   | Object Marker                        | Lt.      |
| 267+89      | OM-3R                   | Object Marker                        | Rt.      |
| 269+51      | OM-3L                   | Object Marker                        | Lt.      |
| 269+51      | OM-3R                   | Object Marker                        | Rt.      |
| 270+90      | W2-2                    | Side Road Rt.                        | Rt.      |
| 273+23      | W1-7                    | Large Arrow (two directions)         | Lt.      |
| 273+33      | W3-1                    | Stop Ahead Sign                      | Rt. 450' |
| 273+33      | R1-1                    | Stop Sign                            | Rt.      |
| 276+25      | W2-2                    | Side Road Lt.                        | Lt.      |
| 281+96      | W3-1                    | Stop Ahead Sign                      | Rt.      |
| 286+46      | R1-1                    | Stop Sign                            | Rt.      |
| 286+85      | W1-7                    | Large Arrow (two directions)         | CL       |
| Total Signs |                         |                                      |          |
| 11          | Warning Signs Req'd.    |                                      |          |
| 4           | Regulatory Signs Req'd. |                                      |          |
| 4           | Hazard Signs Req'd.     |                                      |          |



STRIPING DETAIL

N.T.S.  
 85 Percentile Speed = 55 MPH  
 Minimum Passing Sight Distance = 900 Ft.

Skip Yellow = 1.328 Mi.  
 Continuous White = 16,677 Lin. Ft.  
 Continuous Yellow = 4913 Lin. Ft.  
 Detail Traffic Stripe = 228 Lin. Ft.

CONSTRUCTION NOTES:

1. AFTER ALL CONSTRUCTION IS COMPLETE, INCLUDING THE INSTALLATION OF GUARDRAILS, COMPLETE IN PLACE, BUT PRIOR TO STRIPING, THE ENTIRE PROJECT SHALL BE OPENED TO ALL TRAFFIC.
2. WHENEVER PAVEMENT CONSTRUCTION HAS PROGRESSED SUFFICIENTLY TO PERMIT TRAFFIC MOVEMENT THAT IS UNRESTRICTED BY CHANNELIZING OR OTHER TRAFFIC CONTROL METHODS, TEMPORARY RAISED PAVEMENT MARKERS SHALL BE INSTALLED PER S-619.08. THE CONTRACTOR SHALL REPLACE RAISED PAVEMENT MARKERS AS NECESSARY. IF MORE THAN ONE BITUMINOUS LIFT IS REQUIRED, THE TEMPORARY RAISED PAVEMENT MARKERS SHALL BE INSTALLED AND MAINTAINED IN A LIKE MANNER AFTER EACH LIFT. THE TEMPORARY RAISED PAVEMENT MARKERS SHALL BE INSTALLED PRIOR TO THE APPLICATION OF THE SEAL COAT. THIS WORK IS NOT A SEPARATE PAY ITEM BUT WILL BE CONSIDERED INCLUDED IN THE LUMP SUM PAYMENT FOR PAY ITEM NO. S-618-A, "MAINTENANCE OF TRAFFIC".

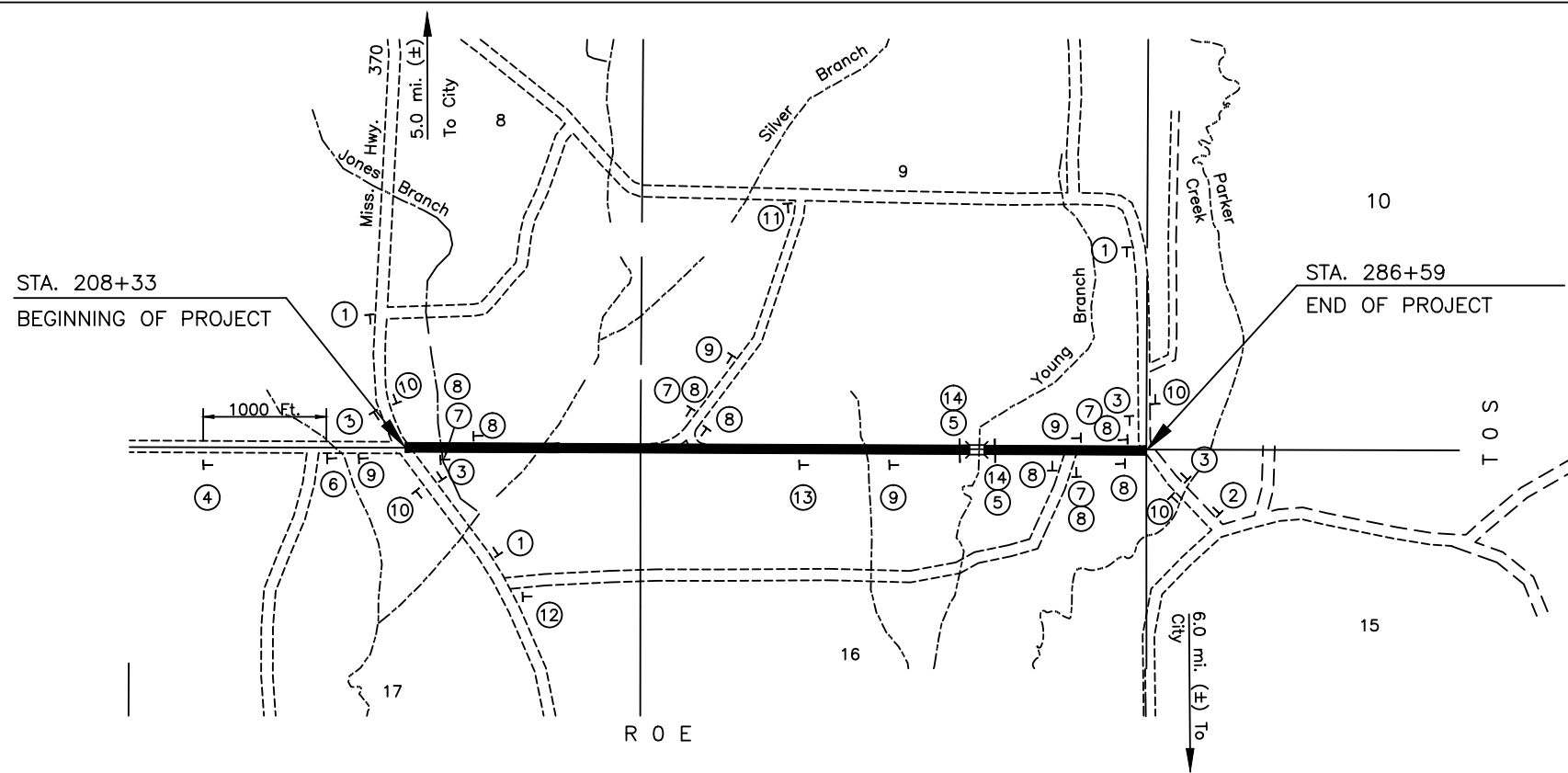
3. PRIOR TO OPENING THE PROJECT TO TRAFFIC, R4-1 "DO NOT PASS" OR R4-2 "PASS WITH CARE" SIGNS SHALL BE INSTALLED ON THE RIGHT HAND SIDE OF THE ROAD AT THE B.O.P. AND THE E.O.P. AND THE BEGINNING AND THE END OF THE NO-PASSING ZONES AND W14-3 SIGNS ON THE LEFT HAND SIDE OF THE ROADWAY IN ACCORDANCE WITH THE PERMANENT STRIPING SCHEDULE IN THE PLANS. THIS WORK IS NOT A SEPARATE PAY ITEM BUT WILL BE CONSIDERED INCLUDED IN THE LUMP SUM PAYMENT FOR PAY ITEM NO. S-618-A, "MAINTENANCE OF TRAFFIC".

DURING STRIPING OPERATIONS:

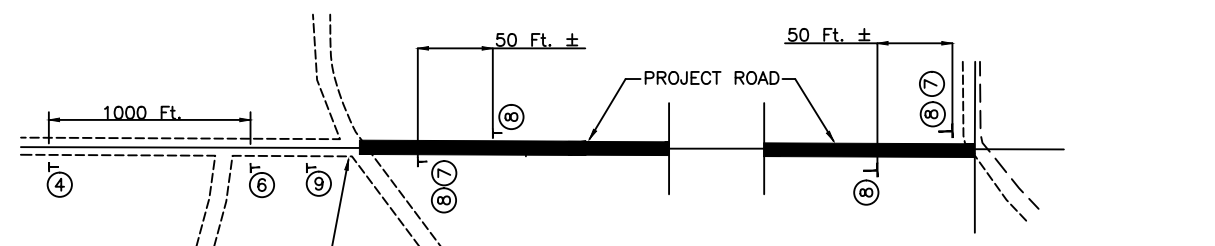
4. A SHADOW VEHICLE SHALL BE POSITIONED APPROXIMATELY 300 FEET IN FRONT OF AND BEHIND PAINTING OPERATIONS.
5. THE SHADOW VEHICLE SHALL CARRY A SIGN "ROADWAY STRIPING AHEAD". BOTTOM OF SIGN SHALL BE A MINIMUM OF SIX (6) FEET ABOVE PAVEMENT.
6. A FLASHING YELLOW LIGHT SHALL BE INSTALLED ABOVE TOP OF WARNING SIGNS.
7. A FLASHING YELLOW LIGHT SHALL BE INSTALLED ON ALL VEHICLES USED IN THE MARKING OPERATIONS.

GENERAL NOTES:

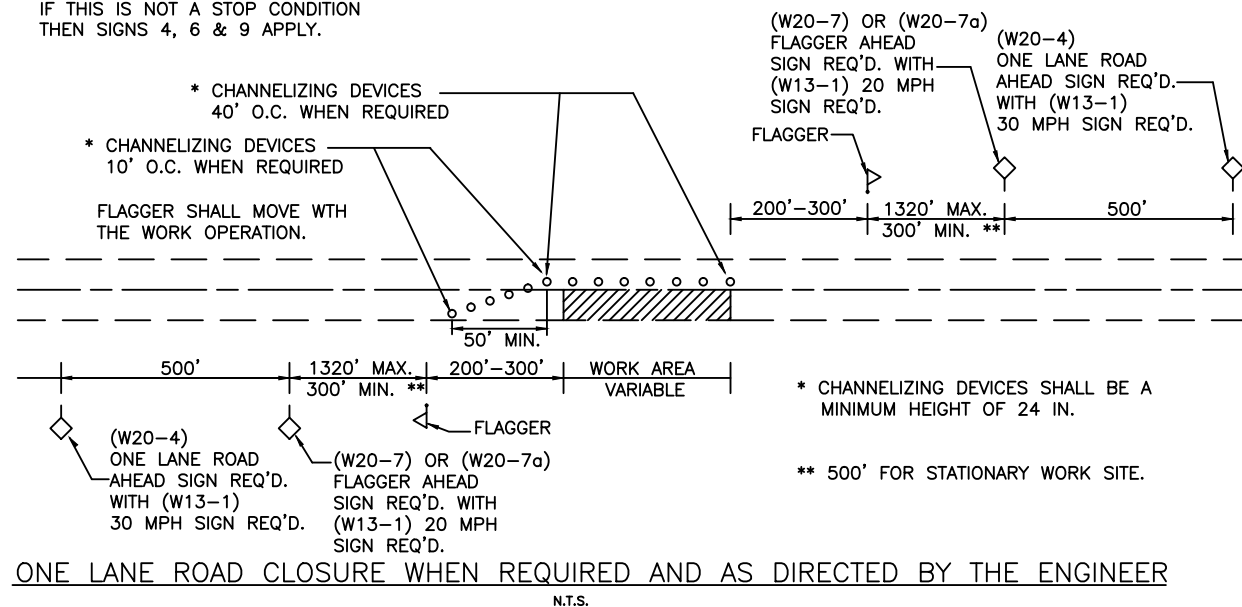
1. CONTRACTOR SHALL INSTALL TRAFFIC CONTROL DEVICES SUCH AS CONES, DRUMS, FLASHERS, BARRICADES, SIGNS, ETC., TO SAFELY CHANNEL OR DIRECT TRAFFIC. WHEN NECESSARY, FLAGGERS SHALL BE USED IN CONJUNCTION WITH TRAFFIC CONTROL DEVICES (FLAGGER AHEAD SIGN REQUIRED IN ADVANCE OF FLAGGERS EXCEPT DURING BRIEF PERIODS OR EMERGENCY SITUATIONS.)
2. TRAFFIC CONTROL DEVICES SHALL BE INSTALLED WHENEVER NECESSARY, REMAIN IN PLACE ONLY AS LONG AS THEY ARE NEEDED, AND REMOVED IMMEDIATELY THEREAFTER.
3. PAY FOR INSTALLATION, MAINTENANCE AND REMOVAL OF TRAFFIC CONTROL DEVICES WILL BE MADE UNDER PAY ITEM NOS. S-618-A AND S-618-B.
4. TRAFFIC CONTROL DEVICES SHALL CONFORM TO THE APPLICABLE SPECIFICATIONS OF THE "MANUAL ON UNIFORM TRAFFIC CONTROL DEVICES", LATEST EDITION.
5. THESE ARE MINIMUM REQUIREMENTS AND IN NO WAY RELIEVE THE CONTRACTOR OF HIS OBLIGATION TO MAINTAIN TRAFFIC IN A SAFE MANNER.
6. SEE STANDARD DRAWINGS 259 AND SA-TSP-1 FOR CORRECT PLACEMENT AND INSTALLATION OF BARRICADES AND SIGNS.
7. CONTRACTOR SHALL INSTALL ADVANCE WARNING SIGNS SUCH AS WATCH FOR TRUCKS, TRUCKS TURNING, TRUCKS CROSSING, ETC., AND PLACE FLAGGERS AS DIRECTED BY THE COUNTY ENGINEER ALONG PUBLIC ROADS ON EACH SIDE OF BORROW PIT ENTRANCE OR CROSSING OF PUBLIC ROADS.
8. SEE SPECIAL PROVISION NO. 901-S-618-1 FOR ADDITIONAL CONTRACT REQUIREMENTS.



SCALE = 1" : 1650'



**NOTE:**  
IF THIS IS A STOP CONDITION,  
TAKE SIGNS NO. 4 & 6 OFF.  
IF THIS IS NOT A STOP CONDITION  
THEN SIGNS 4, 6 & 9 APPLY.



| SIGN SCHEDULE |                                          |
|---------------|------------------------------------------|
| SIGN          | DESCRIPTION                              |
| ①             | W20-1 ROAD WORK 1500 FT.                 |
| ②             | W20-1 ROAD WORK 1000 FT.                 |
| ③             | W20-1 ROAD WORK 500 FT.                  |
| ④             | W20-3 ROAD CLOSED AHEAD                  |
| ⑤             | R11-2a ROAD CLOSED                       |
| ⑥             | R11-3a ROAD CLOSED 1000 FT. AHEAD        |
|               | LOCAL TRAFFIC ONLY                       |
| ⑦             | R11-4 ROAD CLOSED TO THRU TRAFFIC        |
| ⑧             | TYPE III BARRICADE                       |
| ⑨             | W20-3 ROAD CLOSED 500 FT.                |
| ⑩             | G20-2a END ROAD WORK (Optional)          |
| ⑪             | R11-3a ROAD CLOSED 3/4 MILES AHEAD       |
|               | LOCAL TRAFFIC ONLY                       |
| ⑫             | R11-3a ROAD CLOSED 1 1/2 MILES AHEAD     |
|               | LOCAL TRAFFIC ONLY                       |
| ⑬             | W20-3 ROAD CLOSED 1500 FT.               |
| ⑭             | TYPE III BARRICADE ACROSS ENTIRE ROADWAY |

DESIGN DATA

Specifications: AASHTO LRFD Bridge Design Specifications, 4th Edition, 2007 through 2009 Interims

DRAINAGE DESIGN DATA

Drainage Area A = 22.32 Sq. Mi.  
 Channel Slope S = 2.43 Ft./Mi.  
 Main Channel Length L = 10.76 Mi.  
 Q25 = 4130 CFS  
 Q100 = 5422 CFS  
 Required Opening = 826 Sq. Ft.  
 Design Opening = 1094 Sq. Ft.

GENERAL NOTES

- ① Specifications: Current Mississippi Standard Specifications For Office of State Aid Road Construction.
- ② No Unauthorized Change Of Plans Will Be Permitted.
- ③ Test Piles Shall Be Driven As Permanent Piles At Locations Shown On The Pile Layout And will Be Paid For As Test Piles Only.
- ④ No Payment Will Be Allowed For Excavation Incidental To Construction Of End Bents Or Pile Encasements.
- ⑤ All Work For Which No Pay Items Are Provided In The Proposal Will Not Be Paid For Directly And Compensation Therefore Will Be Considered Included In The Prices And Payments For Bid Items.
- ⑥ Piling Quantities Are Estimated Only And Shall Not Be Used To Estimate Length Of Test Pile.
- ⑦ Test Pile Reports To Be Submitted To The Office Of State Aid And Approved Prior To Ordering Permanent Pile Lengths.
- ⑧ All Concrete Shall Be Class "A" Concrete.
- ⑨ All Exposed Steel Piling Shall Be Concrete Encased. Encasements Shall Begin A Minimum Of Three Feet Below Finished Ground And Extend To Bottom Of Cap.
- ⑩ Surfaces Shall Be Finished In Accordance With Section S-804.03.19 Of The Specifications.
- ⑪ No Pay Item Is Provided For Foundation Excavation And Channel Excavation For Bridges.
- ⑫ Test Piles Shall Be Driven To A Minimum Bearing Of 60 Tons And A Minimum Tip Elevation Of 284.00. If A Test Piling Does Not Achieve Test Pile Bearing Within Ten Feet Below Specified Test Pile Minimum Tip Elevation, The Bridge Engineer Shall Be Notified Prior To Any Further Test Piling Being Driven. After Review Of The Test Pile Report, The Bridge Engineer Will Then Determine Whether Or Not To Require A Load Test. Load Tests, When Required, Will Be Paid For As Set Forth In The Contract Documents For This Project.

Seismic Zone "1", Site Class "D".

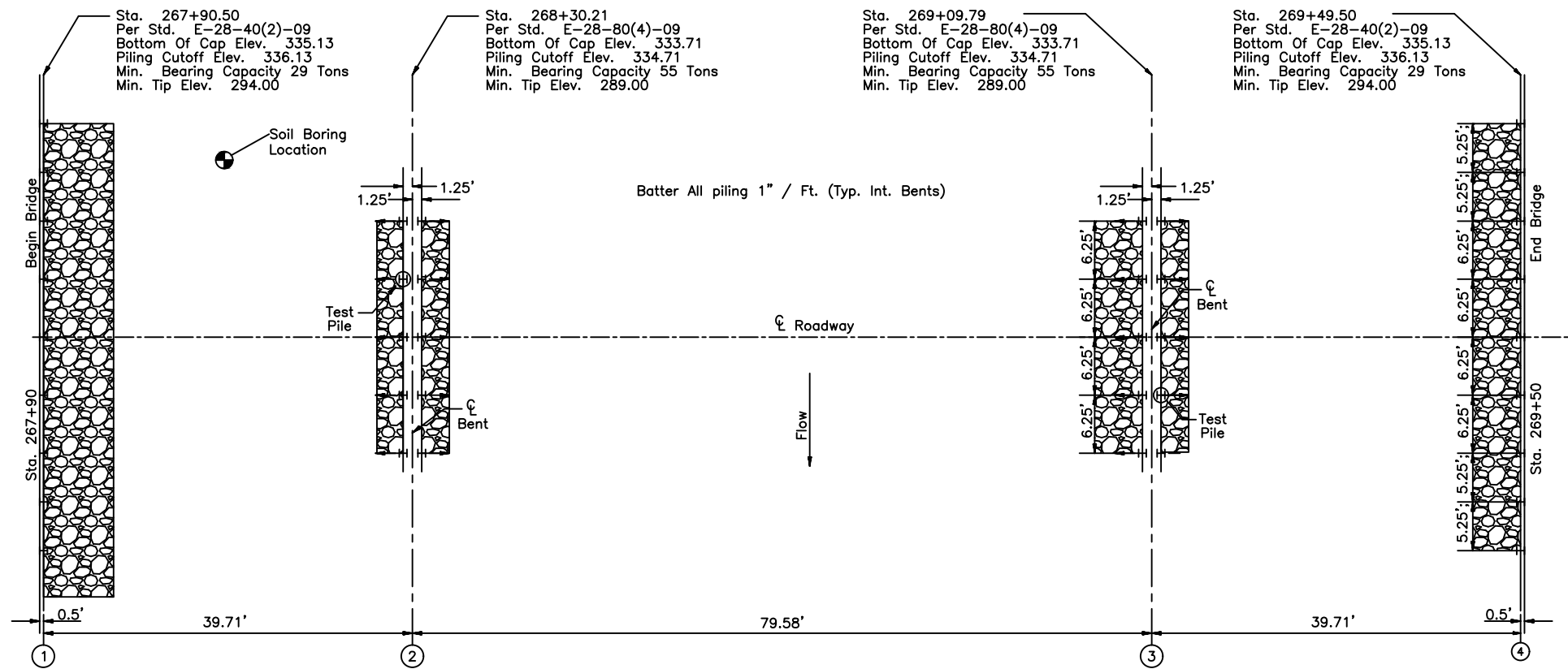
Note: Modify this note as required  
 Submit Seismic worksheet with PS&E Plans

Cementitious Material Exposure To Sulfates Is Negligible.

Note: Modify this note as required by conditions for Negligible, Moderate, or Severe Sulfates.  
 Submit Sulfate Test Report(s) with PS&E Plans

| ESTIMATED BRIDGE QUANTITIES |                  |                        |                   |                 |                 |                  |                          |            |                        |            |
|-----------------------------|------------------|------------------------|-------------------|-----------------|-----------------|------------------|--------------------------|------------|------------------------|------------|
| LOCATION                    | Concrete Railing | Class "A" Bridge Conc. | Reinforcing Steel | 40' Prest. Beam | 80' Prest. Beam | 12" Steel Piling | 16" Preformed Pile Holes | Test Piles | Loose Riprap (300 Lb.) | Geotextile |
|                             | Lin. Ft.         | Cu. Yd.                | Lb.               | Lin. Ft.        | Lin. Ft.        | Lin. Ft.         | Lin. Ft.                 | Each       | Tons                   | Sq. Yd.    |
| End Bents                   |                  | 27.38                  | 3,684             |                 |                 | 810              | 100                      |            | 79                     | 170        |
| Int. Bents                  |                  | 26.88                  | 3,694             |                 |                 | 900              | 100                      | 2.0        |                        |            |
| End Spans                   | 160.0            | 67.10                  | 12,708            | 198.75          |                 |                  |                          |            |                        |            |
| Int. Spans                  | 160.0            | 64.75                  | 12,489            |                 | 398.75          |                  |                          |            |                        |            |
| Encasement                  |                  | 10.78                  | 174               |                 |                 |                  |                          |            |                        |            |
| <b>Totals</b>               | <b>320.0</b>     | <b>196.89</b>          | <b>32,749</b>     | <b>198.75</b>   | <b>398.75</b>   | <b>1,710</b>     | <b>1,710</b>             | <b>2.0</b> | <b>79</b>              | <b>170</b> |

NOTE:  
 Final Quantities For Pile Encasement To Be Determined By Field Measurement.  
 Estimated Length For Piling Is Based On Minimum Tip Elevations.  
 Final Pay Length Will Be Approved By Bridge Engineer.

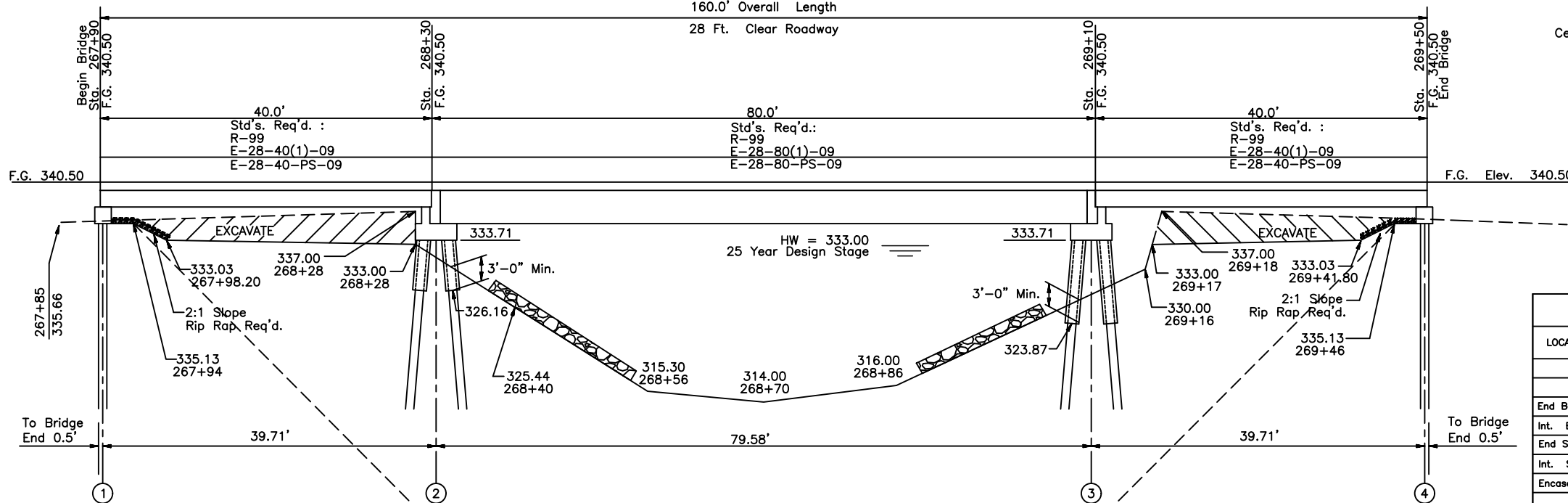


FOUNDATION PLAN

Scale: 1/8" = 1'  
 All Piling Shall Be HP 12 X 53 Steel Piling

1 @ 40', 1 @ 80', 1 @ 40'  
 Prestressed Concrete Beam Spans  
 160.0' Overall Length

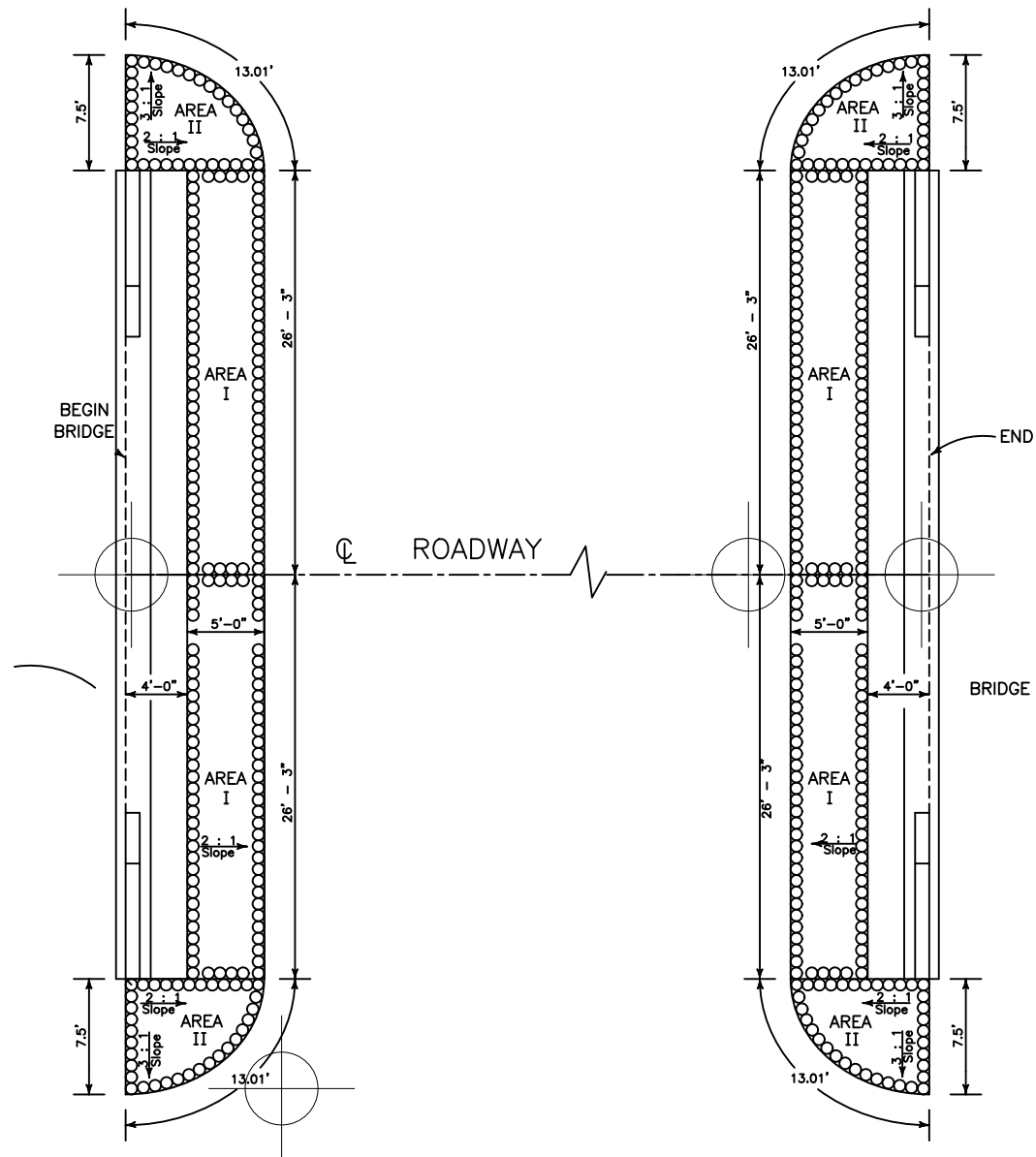
28 Ft. Clear Roadway



ELEVATION AT ROADWAY

Scale: 1/8" = 1'

Note: Show ground elevation on the boring log



| BORING LOG                                                 |            |              |            |                   |                 |                   |                        |                                    |
|------------------------------------------------------------|------------|--------------|------------|-------------------|-----------------|-------------------|------------------------|------------------------------------|
| PROJECT                                                    | [REDACTED] |              | BORING NO. | BH-1              | Ground elev.    | 0.000 m.          |                        |                                    |
| LOCATION                                                   | [REDACTED] |              | DEPTH (m)  | 35.00 m.          | OBS. GWL. (m)   | -4.55 m.          |                        |                                    |
| INSPECTOR                                                  | [REDACTED] |              | START DATE | 18-01-62          | FINISHED DATE   | 18-01-62          |                        |                                    |
| SOIL DESCRIPTION                                           | DEPTH (m)  | GRAPHIC LOG. | METHOD     | SAMPLING RECOVERY | SPT-N<br>B / FT | PL-Wn-LL<br>□ ○ ■ | Su<br>t/m <sup>2</sup> | γ <sub>t</sub><br>t/m <sup>3</sup> |
| MEDIUM DENSE CLAYEY SAND, GREYISH BROWN. (SC)              | 21         | [Pattern]    | SS 4       |                   | 20              | 40                | 4                      | 1.0                                |
| VERY STIFF SANDY CLAY, OLIVE GREY. (CL)                    | 22         | [Pattern]    | SS 5       |                   | 18              | 28                |                        |                                    |
| HARD SANDY CLAY, GREYISH BROWN. (CL)                       | 23         | [Pattern]    | SS 6       |                   | 47              | 19                |                        | 2.00                               |
| DENSE TO VERY DENSE SAND WITH SILT, GREYISH BROWN. (SP-SM) | 24         | [Pattern]    | SS 7       |                   | 50              | 17                |                        |                                    |
|                                                            | 25         | [Pattern]    | SS 8       |                   | 59/11"          | 20                |                        |                                    |
|                                                            | 26         | [Pattern]    | SS 9       |                   | 51/11"          | 19                |                        |                                    |
| VERY DENSE SAND WITH SILT, PALE YELLOWISH BROWN. (SP-SM)   | 27         | [Pattern]    | SS 10      |                   | 59/11"          | 15                |                        |                                    |
|                                                            | 28         | [Pattern]    | SS 11      |                   | 39              | 25                |                        | 2.02                               |
| HARD CLAY, PALE BROWN. (CL)                                | 29         | [Pattern]    | SS 12      |                   | 44              | 28                |                        |                                    |
| HARD CLAY WITH SAND, PALE BROWN. (CL)                      | 30         | [Pattern]    | SS 13      |                   | 52              | 28                |                        |                                    |
| HARD CLAY WITH SAND, BROWNISH GREY. (CL)                   | 31         | [Pattern]    |            |                   |                 |                   |                        |                                    |
| END OF BORING 35.00 m.                                     | 32         |              |            |                   |                 |                   |                        |                                    |
|                                                            | 33         |              |            |                   |                 |                   |                        |                                    |
|                                                            | 34         |              |            |                   |                 |                   |                        |                                    |
|                                                            | 35         |              |            |                   |                 |                   |                        |                                    |
|                                                            | 36         |              |            |                   |                 |                   |                        |                                    |
|                                                            | 37         |              |            |                   |                 |                   |                        |                                    |
|                                                            | 38         |              |            |                   |                 |                   |                        |                                    |
|                                                            | 39         |              |            |                   |                 |                   |                        |                                    |
|                                                            | 40         |              |            |                   |                 |                   |                        |                                    |
|                                                            | 41         |              |            |                   |                 |                   |                        |                                    |
|                                                            | 42         |              |            |                   |                 |                   |                        |                                    |

ABBREVIATIONS :

- ST = Shelby Tube Sample      LL = Liquid Limit      γ<sub>t</sub> = Total Unit Weight
- SS = Split Spoon Sample      PL = Plastic Limit      SPT = Standard penetration Test
- Wn = Natural Water Content      Su = Undrained Shear Strength

UTILITIES OWNERS

MISSISSIPPI COUNTY POWER ASSOCIATION 601-359-5555  
100 Bridge Replacement Road, Bridge City, MS 39216

BELLSOUTH TELECOMMUNICATIONS, INC. 601-359-5414  
100 Electric Replacement Road, Bridge City, MS 39216

TOWN OF FAULKNER WATER DEPARTMENT 601-359-4844  
10 Easy Street, Big City, MS 39216

GENERAL NOTES

Existing Utilities Conflicting With Proposed Construction To Be Adjusted By Others In Accordance With SOP No. SA II - 2 - 8

Elevations Based On MEAN SEA LEVEL Datum (NGVD 83).

Reference B.M. U.S.G.S. B.M. H-36, Elev. 337.68 Ft. Brass Disk Located In The East Wall Of Courthouse In county Seat, Mississippi

Drainage areas Taken From USGS Topographic Maps. Disturbed Area = 14.4 Acres

HYDRAULIC DESIGN

≤ 25 Acres - RATIONAL METHOD

> 25 Acres - "FLOOD FREQUENCY OF RURAL STREAMS IN MISSISSIPPI" 2013 USGS

SHRINKAGE FACTOR

- Unclassified Excavation = 1.35
- Granular Material (Cl. 4, Gp. "B") (LVM) = 1.50
- Granular Material (Cl. 9, Gp. "B") (LVM) = 1.50

DESIGN DATA

- Design Speed = 40 MPH
- Current ADT (2007 Est.) = 110

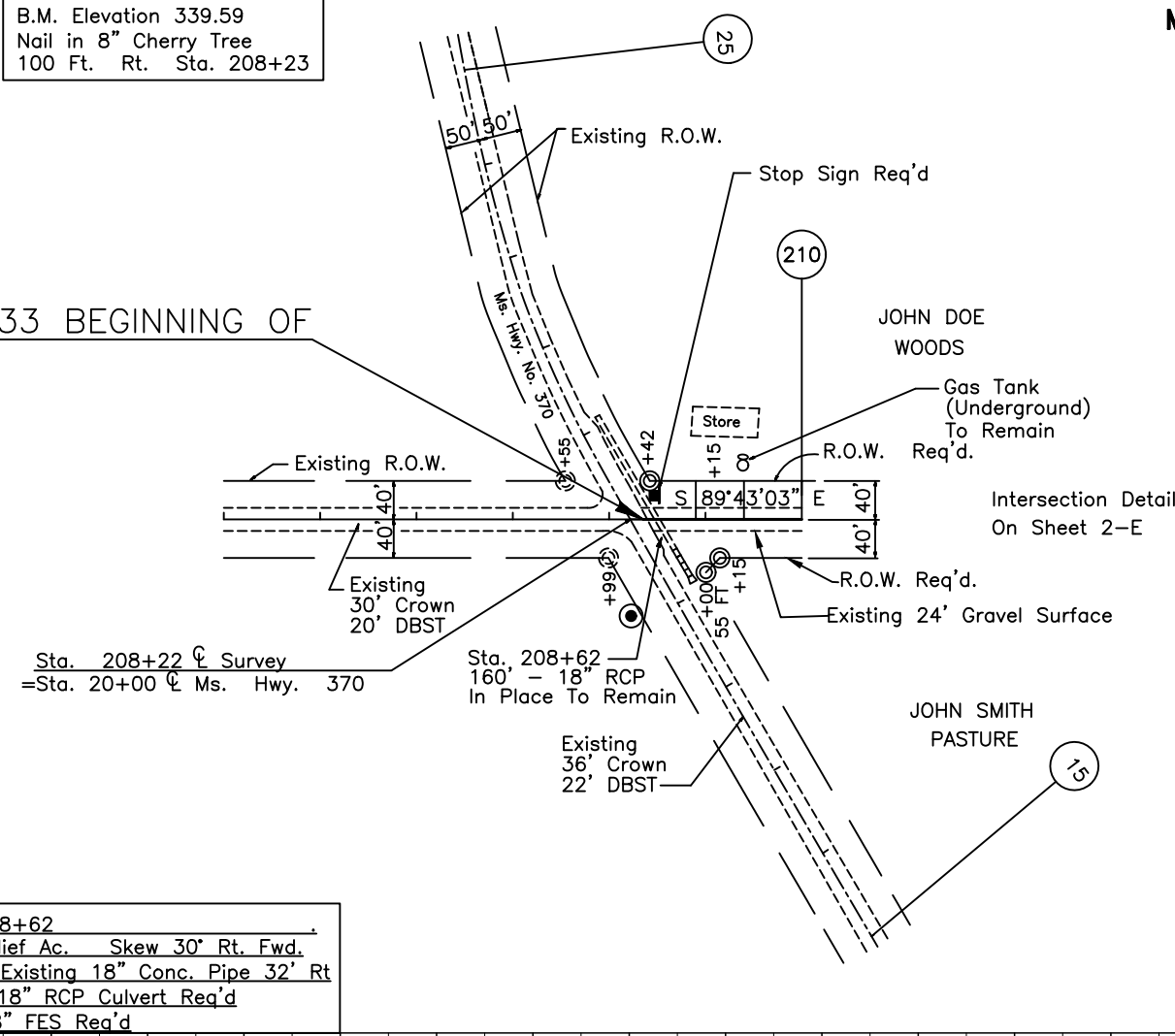
**Note: GPS shall be a decimal expressed to a minimum of 5 decimal places. The GPS data may be located in a table format indicating the location and also located on other approved sheets.**

METHOD VARIES BASED ON DRAINAGE AREA. Delta Region and Urban Basin use 1991 Method

INSERT YOUR OWN SHRINKAGE FACTORS.

B.M. Elevation 339.59  
Nail in 8" Cherry Tree  
100 Ft. Rt. Sta. 208+23

STA. 208+33 BEGINNING OF PROJECT

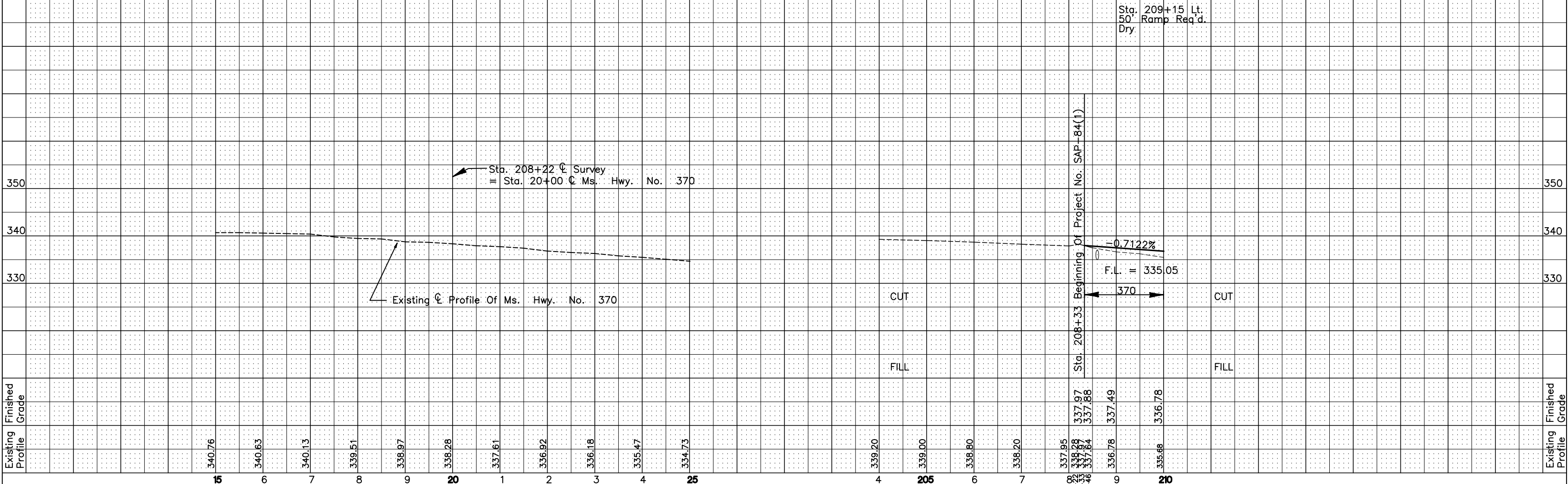


Sta. 208+62  
D.A. Relief Ac. Skew 30' Rt. Fwd.  
Extend Existing 18" Conc. Pipe 32' Rt  
32' - 18" RCP Culvert Req'd  
1 - 18" FES Req'd



SHEET TOTALS

|                |             |
|----------------|-------------|
| Excavation     | 370 Cu. Yd. |
| Riprap         | 0 Tons      |
| R.O.W. Markers | 3 Each      |

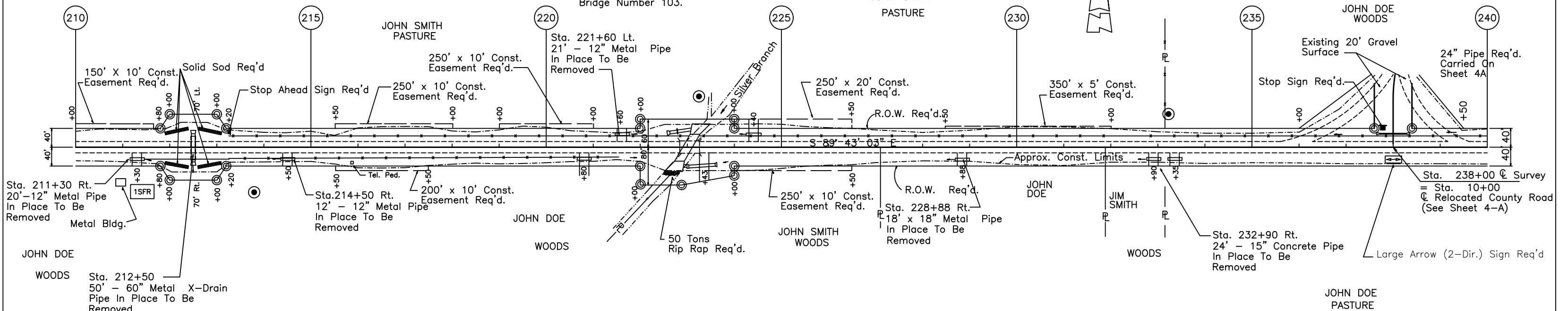


B.M. Elev. 328.21  
Nail in 8" Sycamore  
100 Ft. Rt. Sta. 213+80

B.M. Elev. 332.04  
Nail in 30" Water Oak  
100 Ft. Lt. Sta. 223+25

B.M. Elev. 341.08  
Nail in 6" Red Oak  
60 Ft. Lt. Sta. 233+20

Sta. 222+84 Timber Bridge, 2 @ 21'  
With Steel Beams In Place. To Be  
Removed Under Pay Item S-202-B.  
All Salvagable Material To Remain  
Property Of Mississippi County And Be  
Stockpiled Within The Right Of Way  
For Removal By County Forces.  
Bridge Number 103.



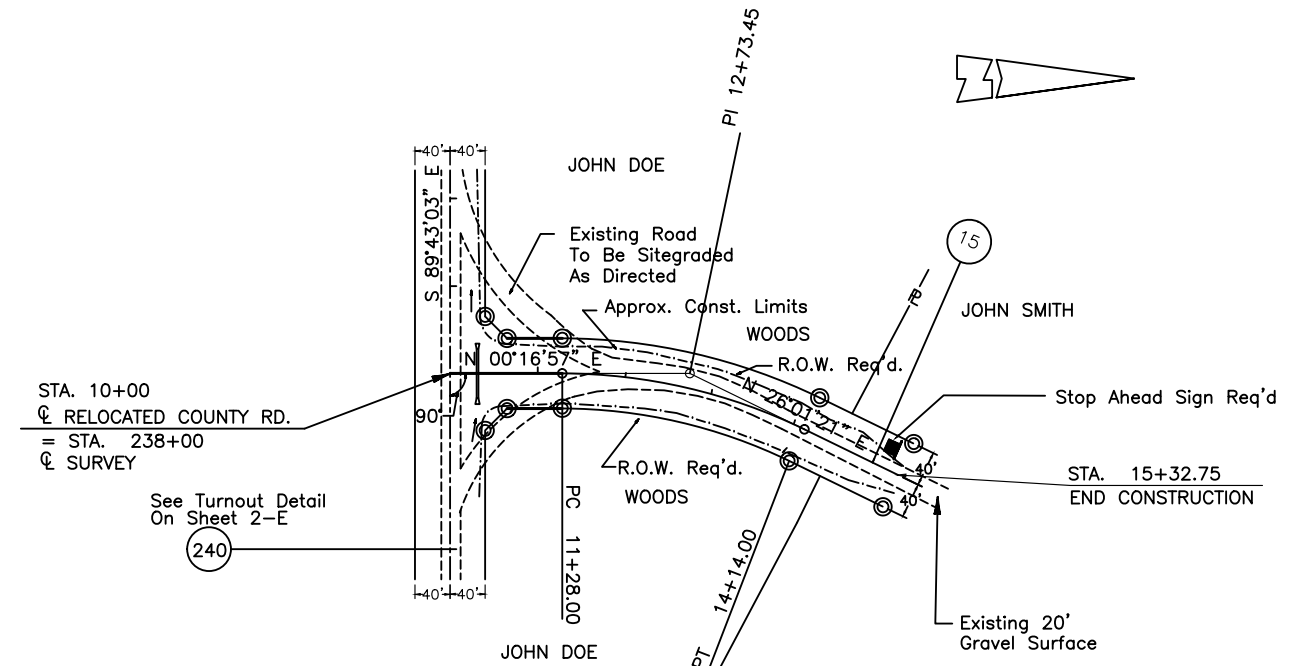
Sta. 212+50  
D.A. 252 Ac. Skew None  
56' - 88" X 54" Arch Pipe Req'd.  
2 - 88" X 54" End Sections Req'd.

Sta. 223+09  
D.A. 1336 Ac. Skew 30' Lt. Fwd.  
65' - 16" X 8' Box Culvert Req'd.  
3:1 Wings Req'd., 10' MAX COVER

SHEET TOTALS  
Excavation 7759.0 Cu. Yd.  
Riprap 50.0 Ton  
R.O.W. Markers 18 Each

| Sta. | Profile | Grade    | Notes                       | Sta. | Profile | Grade    | Notes                       | Sta. | Profile | Grade    | Notes                       | Sta. | Profile | Grade   | Notes                       | Sta. | Profile | Grade    | Notes                       |     |        |          |                             |     |        |  |                                |
|------|---------|----------|-----------------------------|------|---------|----------|-----------------------------|------|---------|----------|-----------------------------|------|---------|---------|-----------------------------|------|---------|----------|-----------------------------|-----|--------|----------|-----------------------------|-----|--------|--|--------------------------------|
| 210  | 335.68  | -0.7122% | Sta. 211+30 Rt. Ramp Req'd. | 215  | 336.00  | +0.6364% | Sta. 214+50 Rt. Ramp Req'd. | 220  | 337.00  | -0.8333% | Sta. 220+80 Rt. Ramp Req'd. | 225  | 336.00  | 0.0000% | Sta. 223+07 Rt. Ramp Req'd. | 230  | 337.00  | +0.8333% | Sta. 228+88 Rt. Ramp Req'd. | 235 | 341.00 | +1.2000% | Sta. 233+35 Rt. Ramp Req'd. | 240 | 347.00 |  | Sta. 238+00 Lt. Turnout Req'd. |
| 1    | 334.24  |          |                             | 6    | 337.23  |          |                             | 11   | 337.61  |          |                             | 16   | 336.03  |         |                             | 21   | 336.42  |          |                             | 26  | 339.33 |          |                             | 31  | 344.60 |  |                                |
| 2    | 332.69  |          |                             | 7    | 337.80  |          |                             | 12   | 337.95  |          |                             | 17   | 336.00  |         |                             | 22   | 336.94  |          |                             | 27  | 339.67 |          |                             | 32  | 343.40 |  |                                |
| 3    | 332.29  |          |                             | 8    | 337.95  |          |                             | 13   | 337.00  |          |                             | 18   | 336.00  |         |                             | 23   | 337.67  |          |                             | 28  | 338.50 |          |                             | 33  | 342.25 |  |                                |
| 4    | 333.09  |          |                             | 9    | 337.00  |          |                             | 14   | 336.87  |          |                             | 19   | 336.00  |         |                             | 24   | 337.05  |          |                             | 29  | 337.73 |          |                             | 34  | 342.28 |  |                                |
| 5    | 334.74  |          |                             | 10   | 337.61  |          |                             | 15   | 336.31  |          |                             | 20   | 336.00  |         |                             | 25   | 337.45  |          |                             | 30  | 338.33 |          |                             | 35  | 343.98 |  |                                |
| 6    | 336.24  |          |                             | 11   | 337.80  |          |                             | 16   | 336.03  |          |                             | 21   | 336.00  |         |                             | 26   | 338.45  |          |                             | 31  | 339.13 |          |                             | 36  | 345.78 |  |                                |
| 7    | 337.16  |          |                             | 12   | 337.95  |          |                             | 17   | 336.00  |          |                             | 22   | 336.00  |         |                             | 27   | 339.45  |          |                             | 32  | 340.21 |          |                             | 37  | 347.00 |  |                                |
| 8    | 337.56  |          |                             | 13   | 337.61  |          |                             | 18   | 336.00  |          |                             | 23   | 336.00  |         |                             | 28   | 339.85  |          |                             | 33  | 341.18 |          |                             | 38  | 347.00 |  |                                |
| 9    | 337.00  |          |                             | 14   | 337.80  |          |                             | 19   | 336.00  |          |                             | 24   | 336.00  |         |                             | 29   | 340.05  |          |                             | 34  | 342.25 |          |                             | 39  | 347.00 |  |                                |
| 10   | 335.51  |          |                             | 15   | 337.95  |          |                             | 20   | 336.00  |          |                             | 25   | 336.00  |         |                             | 30   | 340.45  |          |                             | 35  | 343.40 |          |                             | 40  | 347.00 |  |                                |
| 11   | 334.49  |          |                             | 16   | 337.61  |          |                             | 21   | 336.00  |          |                             | 26   | 336.00  |         |                             | 31   | 340.85  |          |                             | 36  | 344.60 |          |                             | 41  | 347.00 |  |                                |
| 12   | 333.93  |          |                             | 17   | 337.80  |          |                             | 22   | 336.00  |          |                             | 27   | 336.00  |         |                             | 32   | 341.25  |          |                             | 37  | 345.78 |          |                             | 42  | 347.00 |  |                                |
| 13   | 334.79  |          |                             | 18   | 337.95  |          |                             | 23   | 336.00  |          |                             | 28   | 336.00  |         |                             | 33   | 341.65  |          |                             | 38  | 347.00 |          |                             | 43  | 347.00 |  |                                |
| 14   | 332.91  |          |                             | 19   | 337.61  |          |                             | 24   | 336.00  |          |                             | 29   | 336.00  |         |                             | 34   | 342.05  |          |                             | 39  | 347.00 |          |                             | 44  | 347.00 |  |                                |
| 15   | 332.27  |          |                             | 20   | 337.80  |          |                             | 25   | 336.00  |          |                             | 30   | 336.00  |         |                             | 35   | 342.45  |          |                             | 40  | 347.00 |          |                             | 45  | 347.00 |  |                                |
| 16   | 332.17  |          |                             | 21   | 337.95  |          |                             | 26   | 336.00  |          |                             | 31   | 336.00  |         |                             | 36   | 342.85  |          |                             | 41  | 347.00 |          |                             | 46  | 347.00 |  |                                |
| 17   | 332.07  |          |                             | 22   | 337.61  |          |                             | 27   | 336.00  |          |                             | 32   | 336.00  |         |                             | 37   | 343.25  |          |                             | 42  | 347.00 |          |                             | 47  | 347.00 |  |                                |
| 18   | 332.07  |          |                             | 23   | 337.80  |          |                             | 28   | 336.00  |          |                             | 33   | 336.00  |         |                             | 38   | 343.65  |          |                             | 43  | 347.00 |          |                             | 48  | 347.00 |  |                                |
| 19   | 332.07  |          |                             | 24   | 337.95  |          |                             | 29   | 336.00  |          |                             | 34   | 336.00  |         |                             | 39   | 344.05  |          |                             | 44  | 347.00 |          |                             | 49  | 347.00 |  |                                |
| 20   | 332.07  |          |                             | 25   | 337.61  |          |                             | 30   | 336.00  |          |                             | 35   | 336.00  |         |                             | 40   | 344.45  |          |                             | 45  | 347.00 |          |                             | 50  | 347.00 |  |                                |
| 21   | 332.07  |          |                             | 26   | 337.80  |          |                             | 31   | 336.00  |          |                             | 36   | 336.00  |         |                             | 41   | 344.85  |          |                             | 46  | 347.00 |          |                             | 51  | 347.00 |  |                                |
| 22   | 332.07  |          |                             | 27   | 337.95  |          |                             | 32   | 336.00  |          |                             | 37   | 336.00  |         |                             | 42   | 345.25  |          |                             | 47  | 347.00 |          |                             | 52  | 347.00 |  |                                |
| 23   | 332.07  |          |                             | 28   | 337.61  |          |                             | 33   | 336.00  |          |                             | 38   | 336.00  |         |                             | 43   | 345.65  |          |                             | 48  | 347.00 |          |                             | 53  | 347.00 |  |                                |
| 24   | 332.07  |          |                             | 29   | 337.80  |          |                             | 34   | 336.00  |          |                             | 39   | 336.00  |         |                             | 44   | 346.05  |          |                             | 49  | 347.00 |          |                             | 54  | 347.00 |  |                                |
| 25   | 332.07  |          |                             | 30   | 337.95  |          |                             | 35   | 336.00  |          |                             | 40   | 336.00  |         |                             | 45   | 346.45  |          |                             | 50  | 347.00 |          |                             | 55  | 347.00 |  |                                |
| 26   | 332.07  |          |                             | 31   | 337.61  |          |                             | 36   | 336.00  |          |                             | 41   | 336.00  |         |                             | 46   | 346.85  |          |                             | 51  | 347.00 |          |                             | 56  | 347.00 |  |                                |
| 27   | 332.07  |          |                             | 32   | 337.80  |          |                             | 37   | 336.00  |          |                             | 42   | 336.00  |         |                             | 47   | 347.25  |          |                             | 52  | 347.00 |          |                             | 57  | 347.00 |  |                                |
| 28   | 332.07  |          |                             | 33   | 337.95  |          |                             | 38   | 336.00  |          |                             | 43   | 336.00  |         |                             | 48   | 347.65  |          |                             | 53  | 347.00 |          |                             | 58  | 347.00 |  |                                |
| 29   | 332.07  |          |                             | 34   | 337.61  |          |                             | 39   | 336.00  |          |                             | 44   | 336.00  |         |                             | 49   | 348.05  |          |                             | 54  | 347.00 |          |                             | 59  | 347.00 |  |                                |
| 30   | 332.07  |          |                             | 35   | 337.80  |          |                             | 40   | 336.00  |          |                             | 45   | 336.00  |         |                             | 50   | 348.45  |          |                             | 55  | 347.00 |          |                             | 60  | 347.00 |  |                                |
| 31   | 332.07  |          |                             | 36   | 337.95  |          |                             | 41   | 336.00  |          |                             | 46   | 336.00  |         |                             | 51   | 348.85  |          |                             | 56  | 347.00 |          |                             | 61  | 347.00 |  |                                |
| 32   | 332.07  |          |                             | 37   | 337.61  |          |                             | 42   | 336.00  |          |                             | 47   | 336.00  |         |                             | 52   | 349.25  |          |                             | 57  | 347.00 |          |                             | 62  | 347.00 |  |                                |
| 33   | 332.07  |          |                             | 38   | 337.80  |          |                             | 43   | 336.00  |          |                             | 48   | 336.00  |         |                             | 53   | 349.65  |          |                             | 58  | 347.00 |          |                             | 63  | 347.00 |  |                                |
| 34   | 332.07  |          |                             | 39   | 337.95  |          |                             | 44   | 336.00  |          |                             | 49   | 336.00  |         |                             | 54   | 350.05  |          |                             | 59  | 347.00 |          |                             | 64  | 347.00 |  |                                |
| 35   | 332.07  |          |                             | 40   | 337.61  |          |                             | 45   | 336.00  |          |                             | 50   | 336.00  |         |                             | 55   | 350.45  |          |                             | 60  | 347.00 |          |                             | 65  | 347.00 |  |                                |





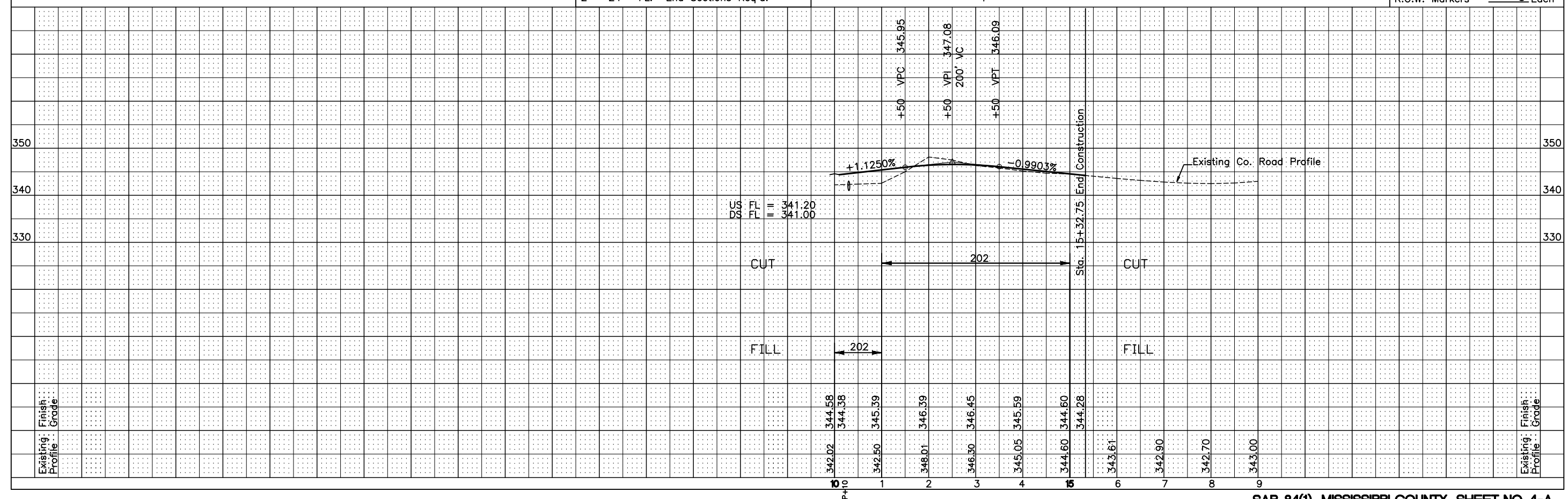
TYPICAL SECTION MAY BE SHOWN HERE OR SHOWN ON A SEPARATE SHEET FOLLOWING THE MAINLINE TYPICAL SECTION. IF THE MAINLINE AND THE RELOCATED ROAD(S) ARE THE SAME, THEN SHOW THE LIMITS ON THE MAINLINE TYPICAL SECTION.

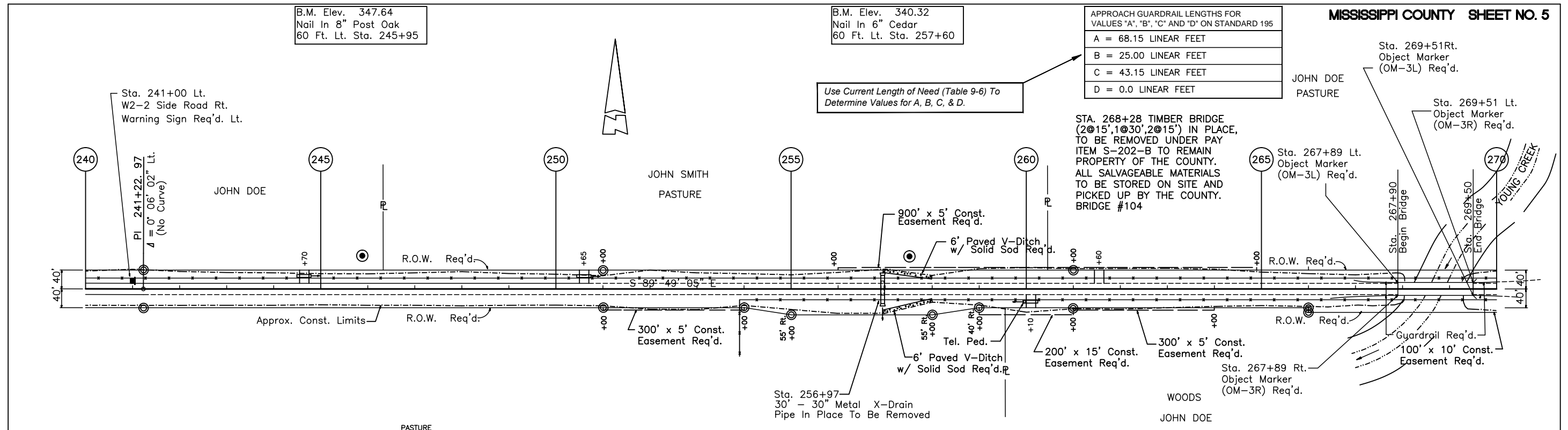
Design Speed = 30 mph  
Current ADT (2007 est) = 70

|                                 |
|---------------------------------|
| Sta. 10+30 ( = Sta. 238+00 LT)  |
| D.A. Relief Ac. Skew None       |
| 56' - 24" Pipe Req'd.           |
| 2 - 24" FL. End Sections Req'd. |

$\Delta = 25^{\circ}44'24''$  Rt.  
 $D = 9^{\circ}00'$  Rt.  
 $T = 145.45'$   
 $L = 286.00'$   
 $E = 16.41'$   
 $R = 636.62'$   
 $SE = 6.4\%$   
 $EW = 3.0$   
 Extra Area = 122.93 Sq. Yds.

| SHEET TOTAL    |              |
|----------------|--------------|
| Excavation     | 202.0 Cu.Yd. |
| Riprap         | 0.0 Ton      |
| R.O.W. Markers | 8 Each       |





APPROACH GUARDRAIL LENGTHS FOR VALUES "A", "B", "C" AND "D" ON STANDARD 195

|   |                     |
|---|---------------------|
| A | = 68.15 LINEAR FEET |
| B | = 25.00 LINEAR FEET |
| C | = 43.15 LINEAR FEET |
| D | = 0.0 LINEAR FEET   |

STA. 268+28 TIMBER BRIDGE (2@15', 1@30', 2@15') IN PLACE, TO BE REMOVED UNDER PAY ITEM S-202-B TO REMAIN PROPERTY OF THE COUNTY. ALL SALVAGEABLE MATERIALS TO BE STORED ON SITE AND PICKED UP BY THE COUNTY. BRIDGE #104

Use Current Length of Need (Table 9-6) To Determine Values for A, B, C, & D.

Sta. 256+97

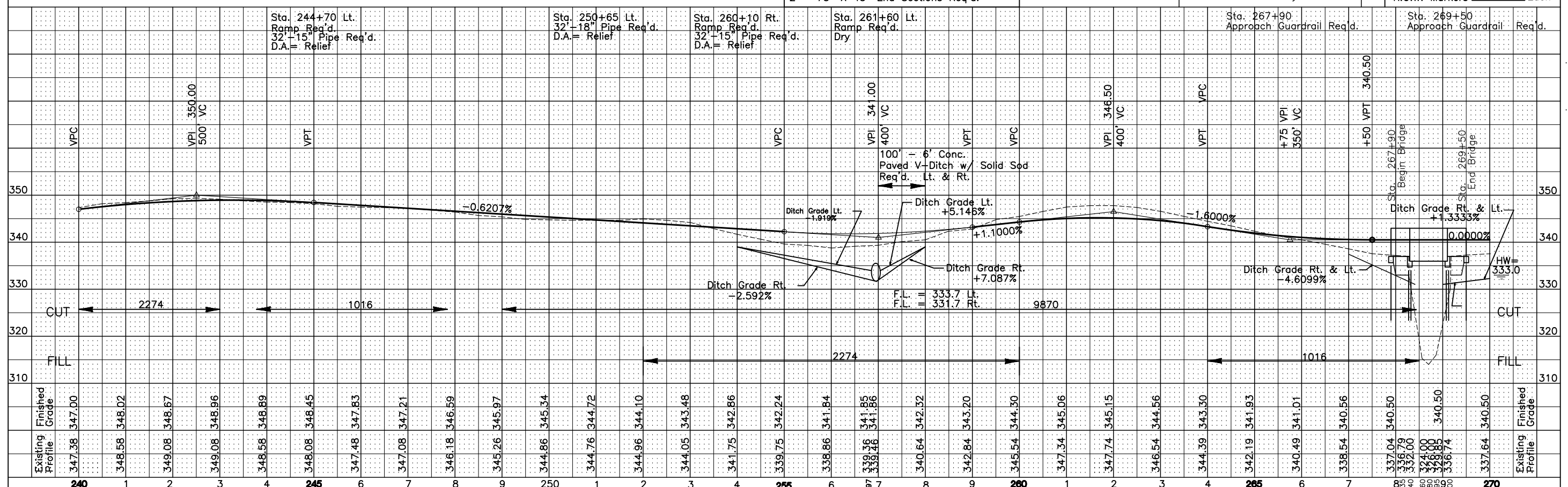
|                                   |     |     |      |      |
|-----------------------------------|-----|-----|------|------|
| D.A.                              | .78 | Ac. | Skew | None |
| 56' - 73" X 45" Arch Pipe Req'd.  |     |     |      |      |
| 2 - 73" X 45" End Sections Req'd. |     |     |      |      |

Sta. 267+90

|                           |        |
|---------------------------|--------|
| Bridge                    | Req'd. |
| D.A.                      | = 42.8 |
| 1 @ 40', 1 @ 80', 1 @ 40' |        |
| Prestressed Conc. Spans   |        |
| 28' Clear Roadway         |        |

SHEET TOTALS

|                |          |        |
|----------------|----------|--------|
| Excavation     | 13,160.0 | Cu.Yd. |
| Riprap         | 0.0      | Ton    |
| R.O.W. Markers | 10       | Each   |



|                                                               |                                                   |                                                               |                                 |                                       |                                       |
|---------------------------------------------------------------|---------------------------------------------------|---------------------------------------------------------------|---------------------------------|---------------------------------------|---------------------------------------|
| Sta. 244+70 Lt. Ramp Req'd. 32'-15" Pipe Req'd. D.A. = Relief | Sta. 250+65 Lt. 32'-18" Pipe Req'd. D.A. = Relief | Sta. 260+10 Rt. Ramp Req'd. 32'-15" Pipe Req'd. D.A. = Relief | Sta. 261+60 Lt. Ramp Req'd. Dry | Sta. 267+90 Approach Guardrail Req'd. | Sta. 269+50 Approach Guardrail Req'd. |
|---------------------------------------------------------------|---------------------------------------------------|---------------------------------------------------------------|---------------------------------|---------------------------------------|---------------------------------------|

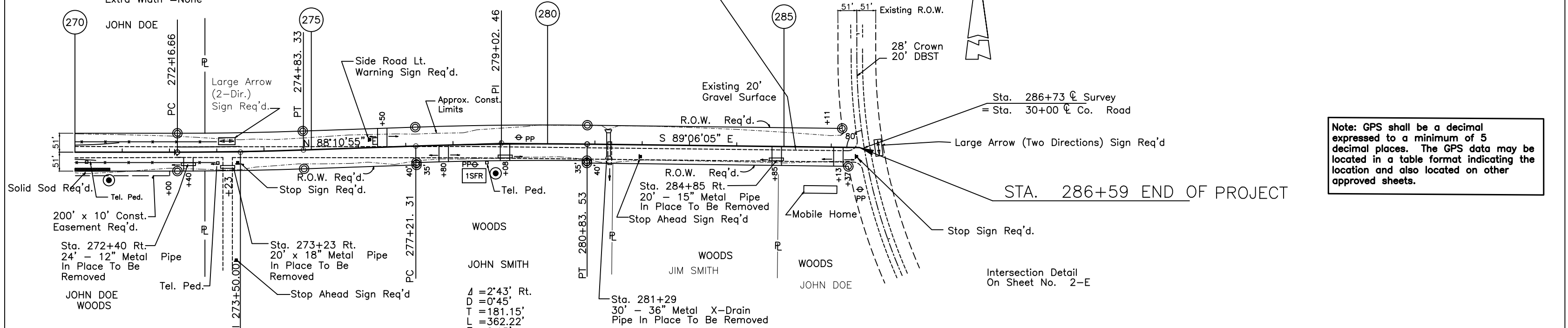


B.M. Elev. 335.73  
Nail In 6" Oak  
65 Ft. Rt. Sta. 270+70

B.M. Elev. 340.47  
Top Elbow Of 2 1/2" Pipe  
50 Ft. Rt. Sta. 279+00

$\Delta = 2'00'$  Lt.  
 $D = 0'45'$   
 $T = 133.35'$   
 $L = 266.67'$   
 $E = 1.16'$   
 $R = 7639.44'$   
 $SE = NC$   
Extra Width = None

JIM SMITH



Note: GPS shall be a decimal expressed to a minimum of 5 decimal places. The GPS data may be located in a table format indicating the location and also located on other approved sheets.

Sta. 281+29  
D.A. 23 Ac. Skew None  
48' - 48" Pipe Culvert Req'd.  
2 - 48" End Sections Req'd.

| SHEET TOTALS   |               | PROJECT TOTALS |                 |
|----------------|---------------|----------------|-----------------|
| Excavation     | 1604.0 Cu.Yd. | Excavation     | 23,095.0 Cu.Yd. |
| Riprap         | 0.0 Ton       | Riprap         | 50.0 Ton        |
| R.O.W. Markers | 12.0 Each     | R.O.W. Markers | 51. Each        |

