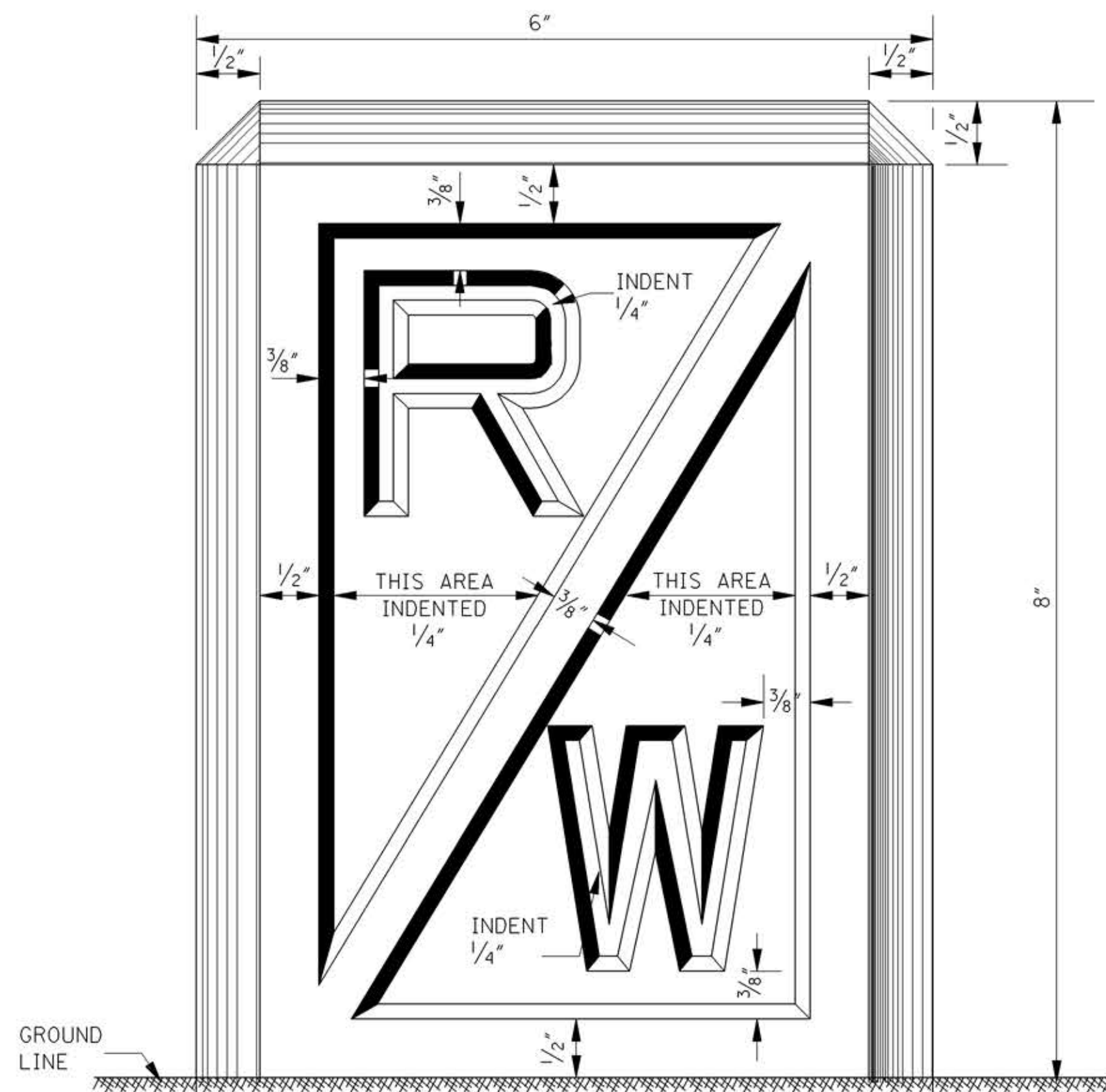
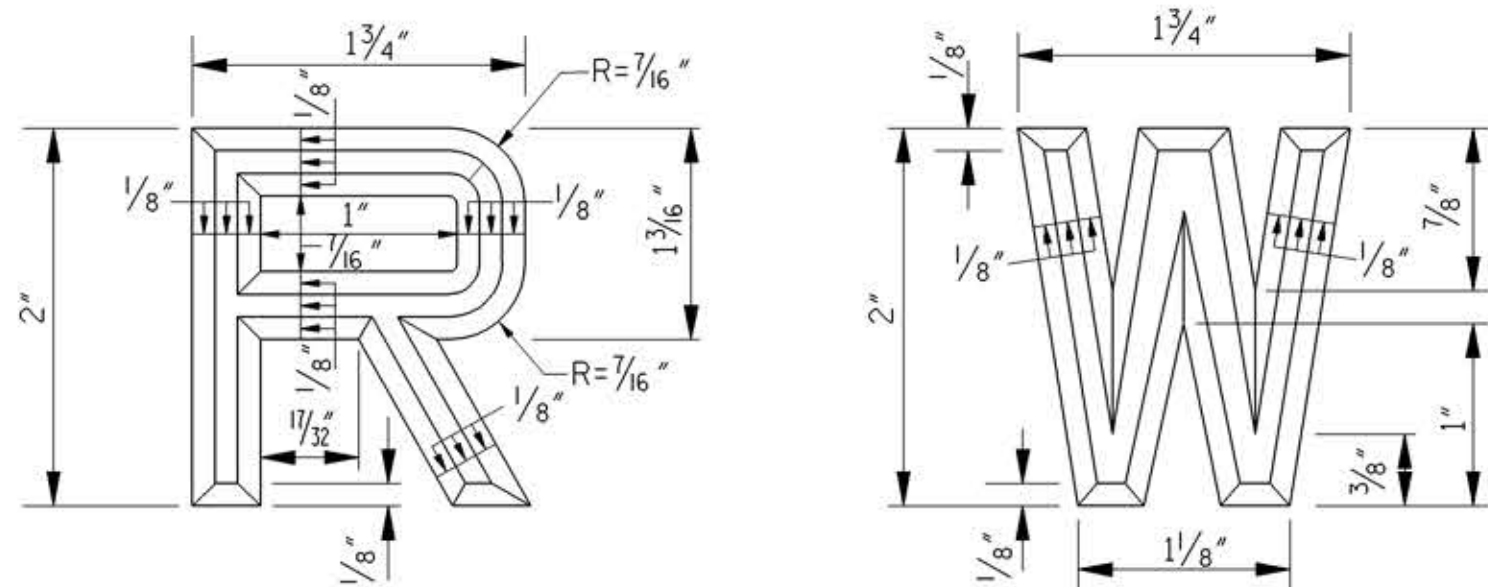


**TYPE I MARKER
(ALTERNATE NO. 1)**

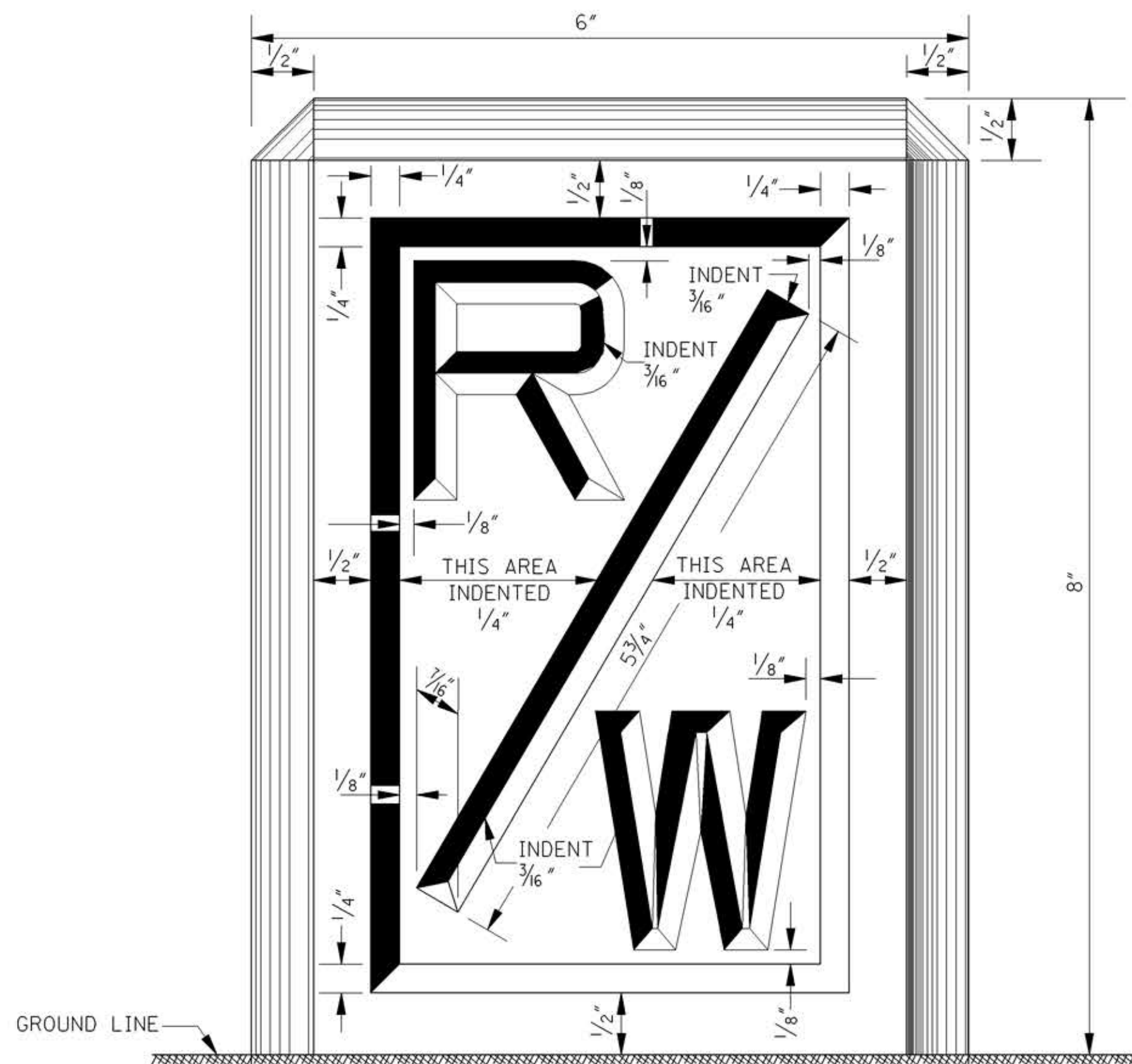


FACE OF MARKER

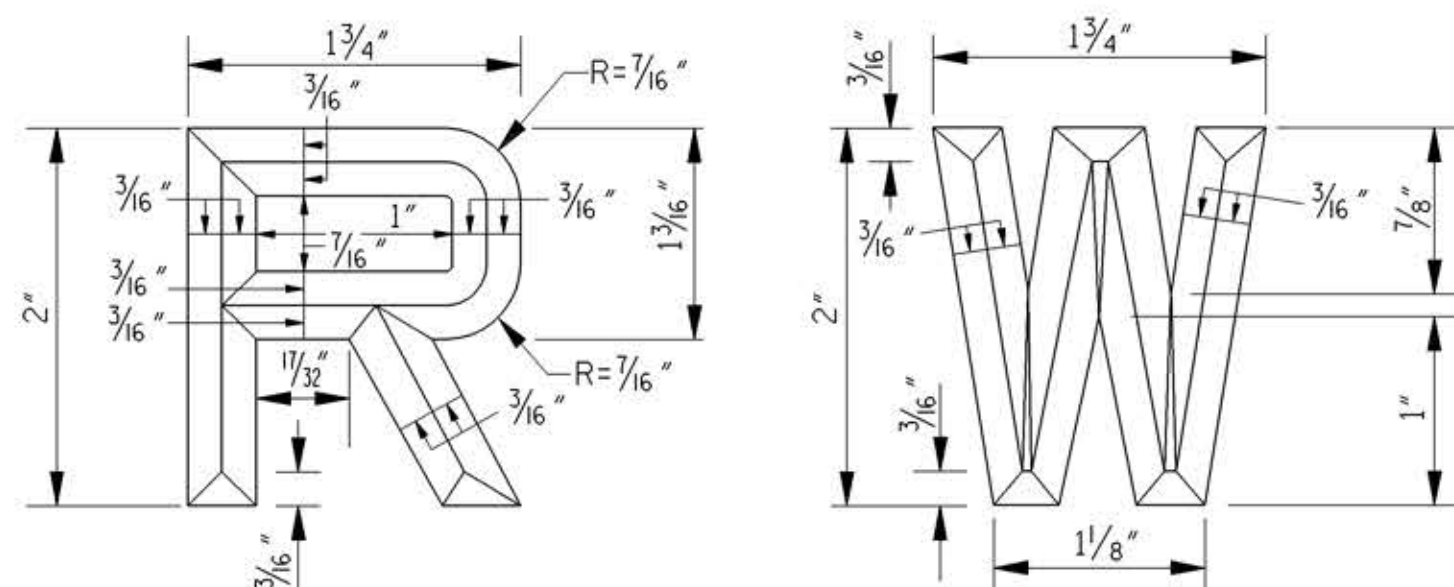


DETAIL OF LETTERS

**TYPE I MARKER
(ALTERNATE NO. 2)**

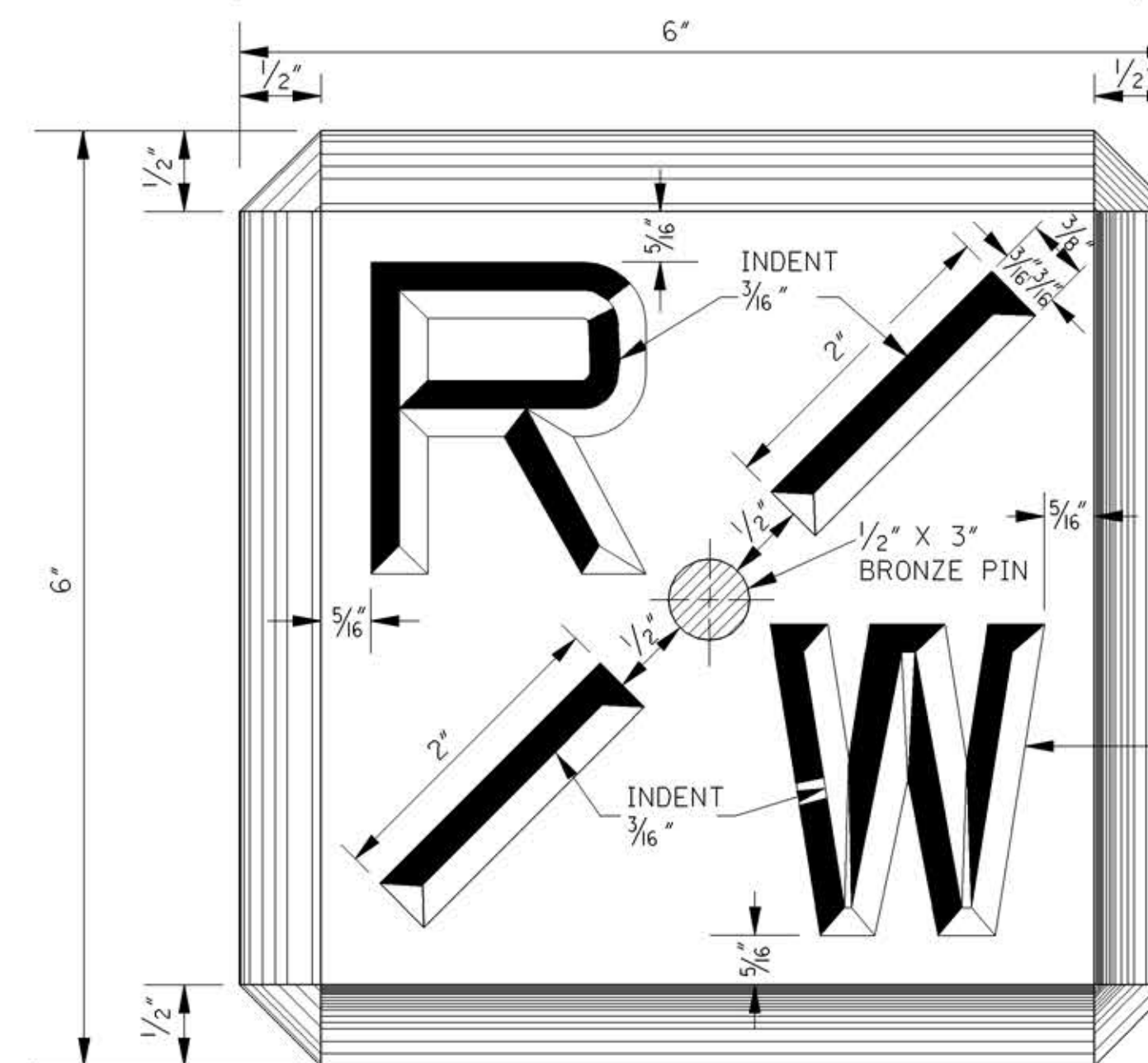


FACE OF MARKER



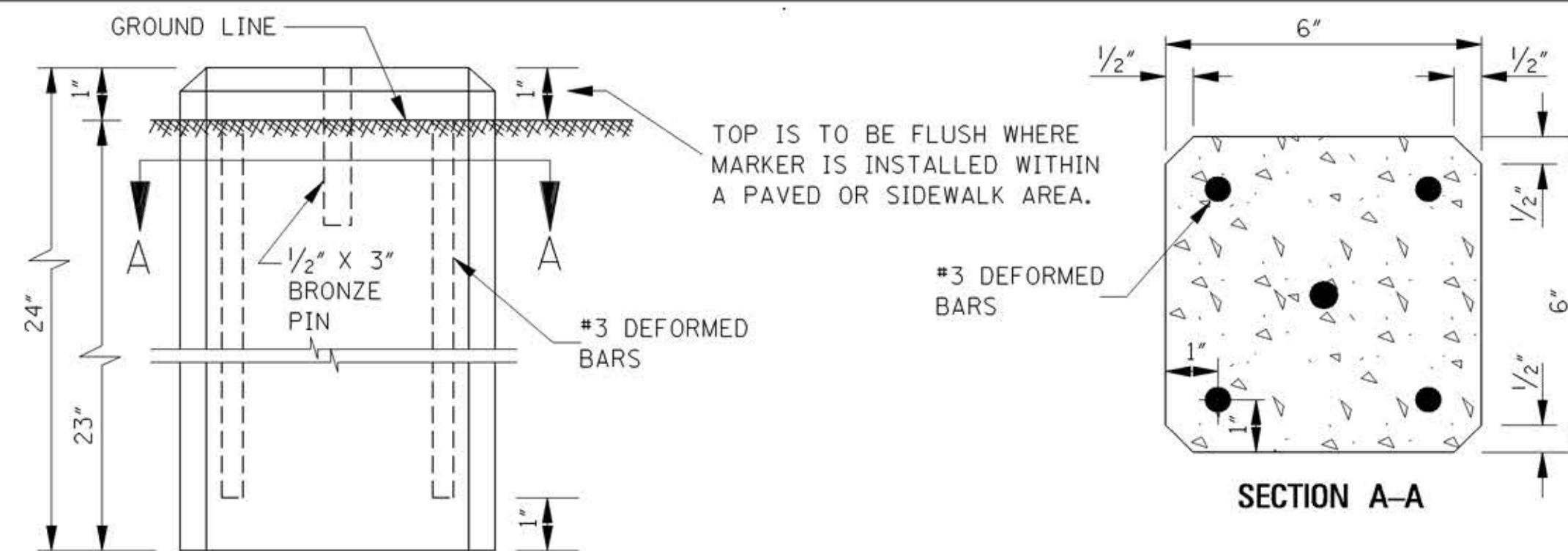
DETAIL OF LETTERS

**TYPE II MARKER
(FLUSH TYPE FOR USE IN BUILT-UP AREAS)**



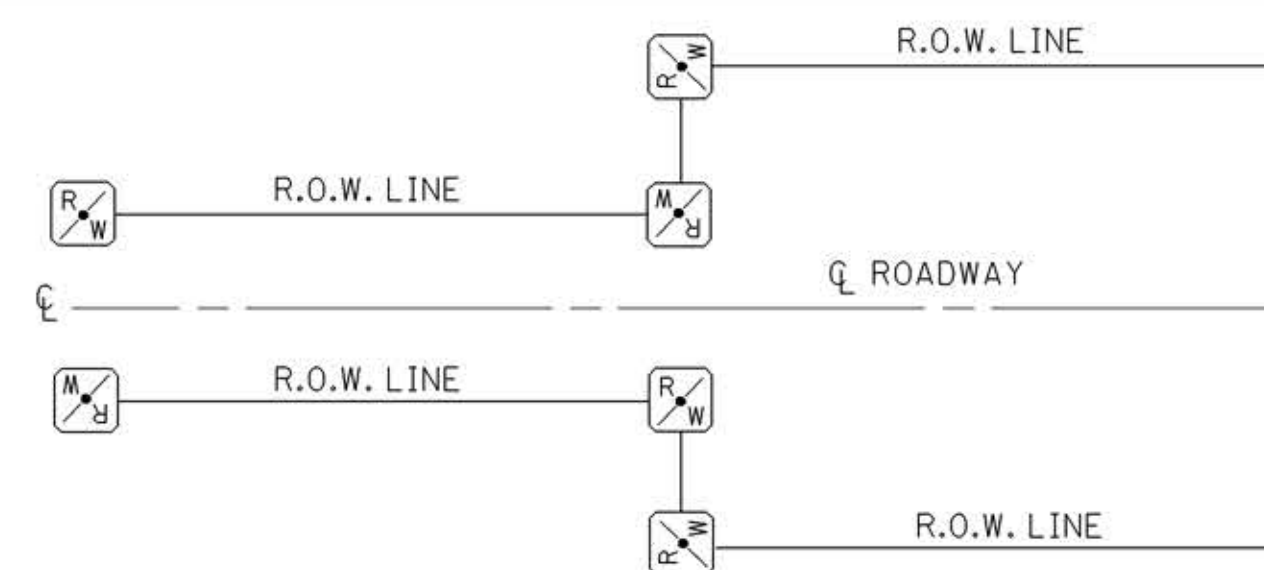
TOP OF MARKER

FOR DIMENSIONS OF LETTERS, SEE "DETAIL OF LETTERS" FOR TYPE I, ALT. NO. 2.

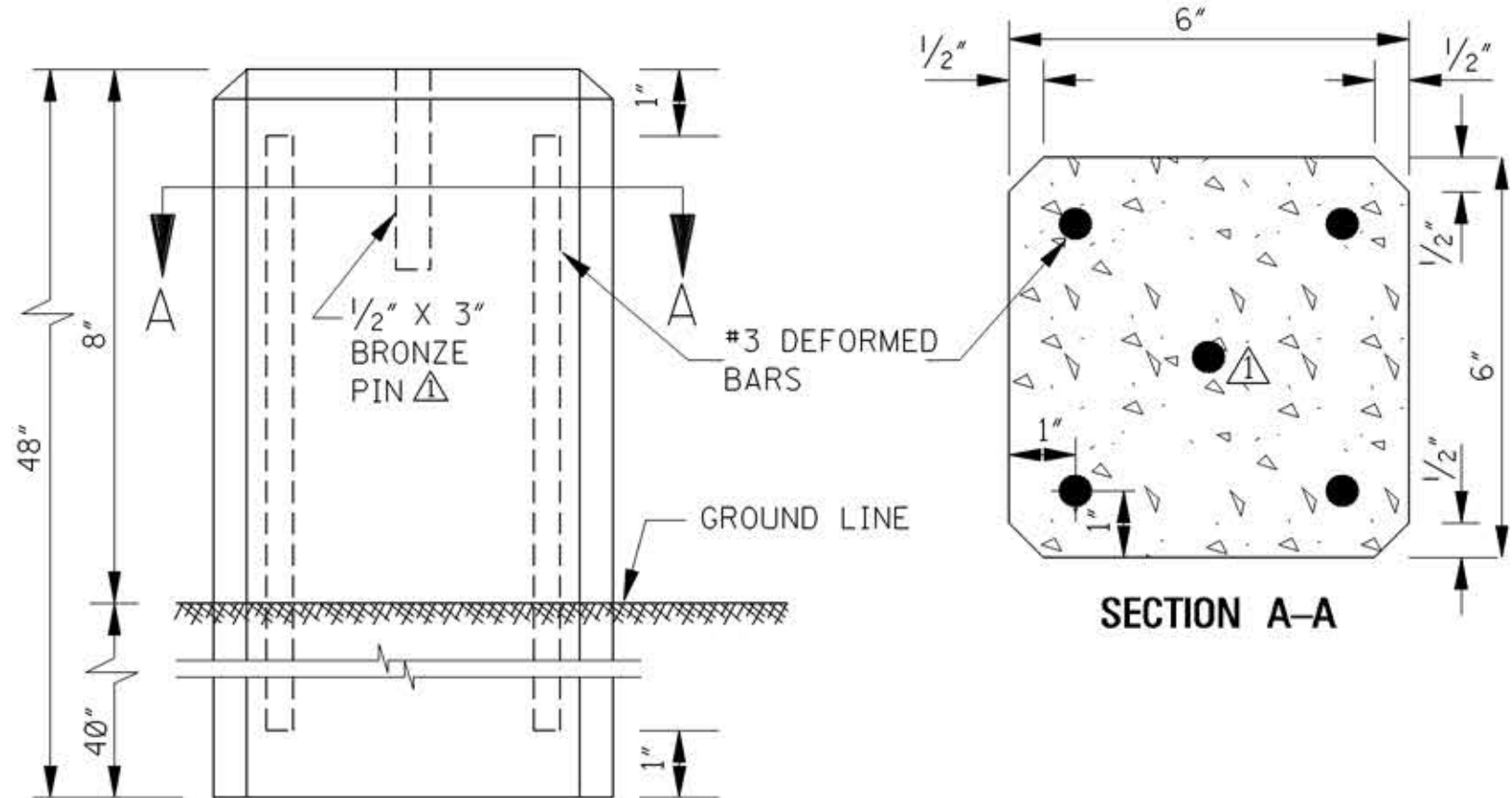


ELEVATION

REINFORCING AND INSTALLATION DETAILS

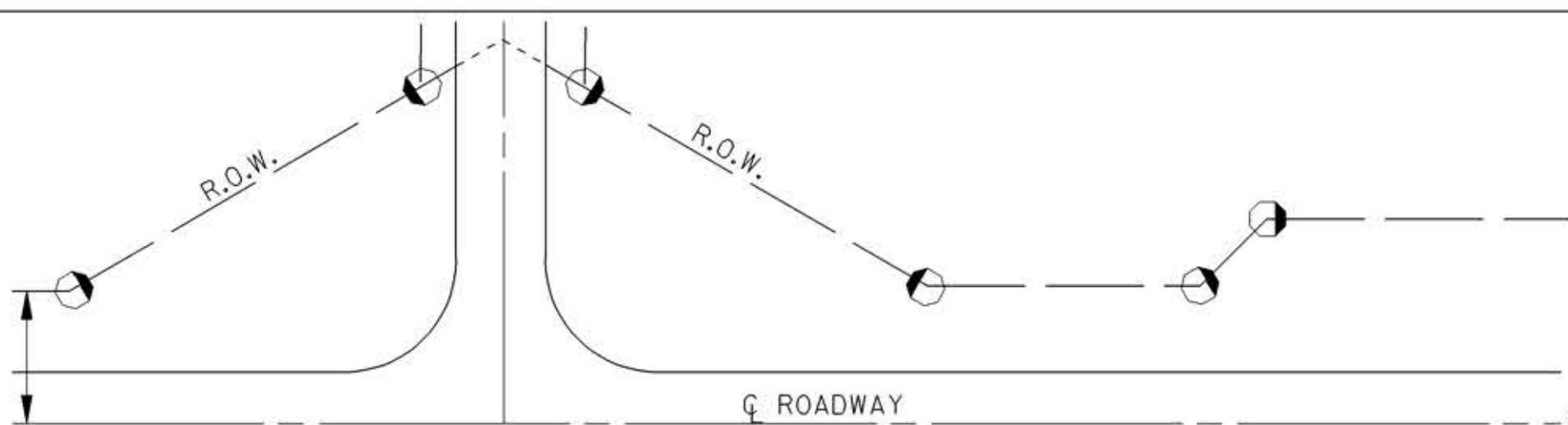


**PLAN
MARKER ARRANGEMENT FOR ADDITIONAL RIGHT-OF-WAY**



ELEVATION

REINFORCING AND INSTALLATION DETAILS



PLAN

MARKER ARRANGEMENT FOR ADDITIONAL RIGHT-OF-WAY

GENERAL NOTES:

1. THE CONCRETE SHALL HAVE A MINIMUM CEMENT CONTENT OF 470 LBS. OF CEMENT PER CUBIC YARD OF CONCRETE.
2. THE MARKERS SHALL BE PLACED AS INDICATED ELSEWHERE ON PLANS.
3. TYPE II MARKERS SHALL BE USED UNLESS OTHERWISE APPROVED.

BY	OFFICE OF STATE AID ROAD CONSTRUCTION		
REVISION			
DATE	ISSUE DATE: September 19, 2017		
	SHEET NUMBER		SA-RW-1

RIGHT-OF-WAY MARKER